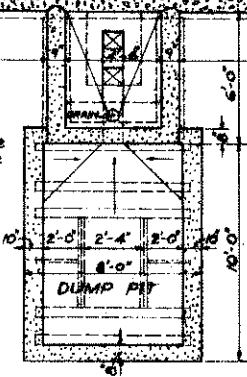


NOTE

Specifications of the elevator to be installed should be obtained before building elevator shaft and pit.

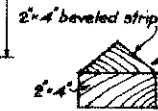


FOUNDATION PLAN

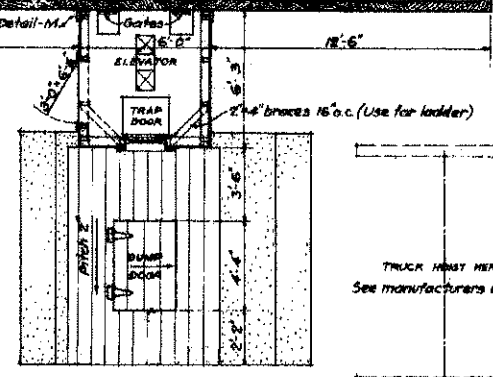
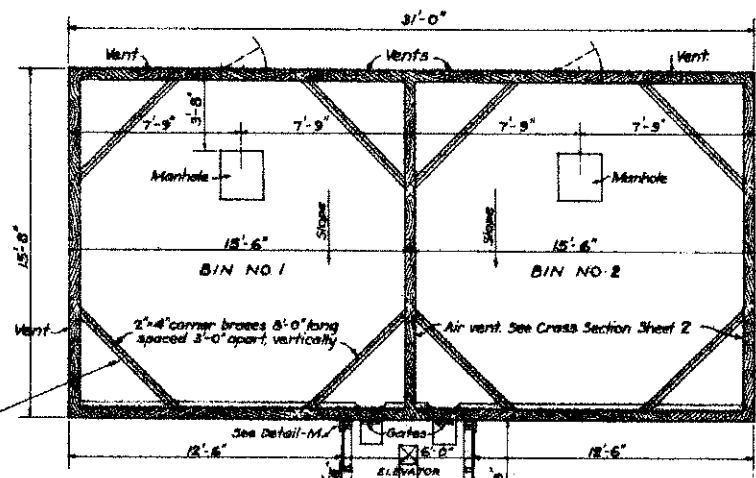
Scale $\frac{1}{4}$ " = 1'-0"

BILL OF MATERIALS

- CONCRETE-1 2 $\frac{3}{4}$: 4 mix.
 158 sacks cement, 15.6 cu. yds. sand 24.5 cu. yds. gravel.
 LUMBER-ETC.
 10,000 lin. ft. 2" x 6" cribbing.
 1- 8" x 6" x 6'-0" posts
 4- 6" x 8" x 7'-0" dump pit
 1- 4" x 6" x 7'-0" "
 2- 4" x 6" x 16'-0" floor supports.
 2- 4" x 4" x 12'-0" posts.
 14- 2" x 10" x 16'-0" sills and bin walls.
 31- 2" x 8" x 16'-0" braces, girders, sills and wedge cap.
 25- 2" x 8" x 12'-0" " joint, and pit floor.
 12- 2" x 6" x 16'-0" walls and ties.
 225- 2" x 4" x 18'-0" bin floors
 207- 2" x 4" x 16'-0" corner braces, rafters, girts.
 7- 1" x 6" x 12'-0" ridge, and trim.
 750 ft. B.M. 1" x 5" T & G. boards, doors, floors.
 1800 " " 1" x 8" ship-lap, sheathing, bin floors.
 840 sheets 26 gage galv. corrugated metal 26" wide, 32" long.
 30 " " " " " 6'-0" long.
 42 " " " " " 5'-0" "
 46 lin. ft. galv. metal ridge roll.
 3- windows, 4- 10" x 12" lights with frames and trim.
 1- 1" x 12" x 16'-0" roof connection.
 Nails for cribbing, bin floors, metal siding and roofing included.
 Elevator, grain chutes, paint, nails, hardware, flashing not included.

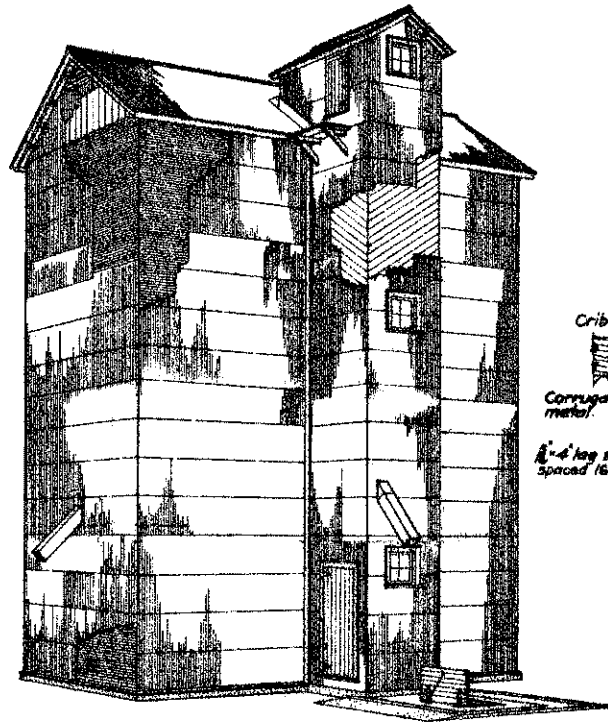


SECTION 2" x 4" BRACE



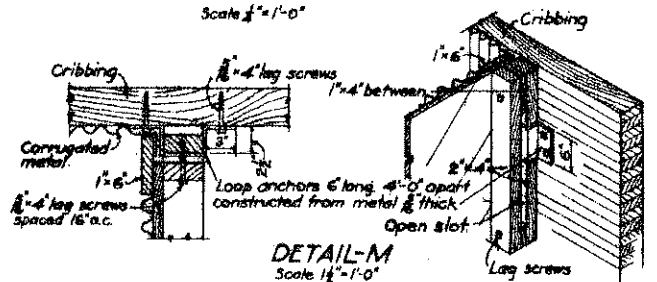
PLAN OF BINS

Scale $\frac{1}{4}$ " = 1'-0"



PERSPECTIVE

TOTAL CAPACITY 11,000 BUSHELS

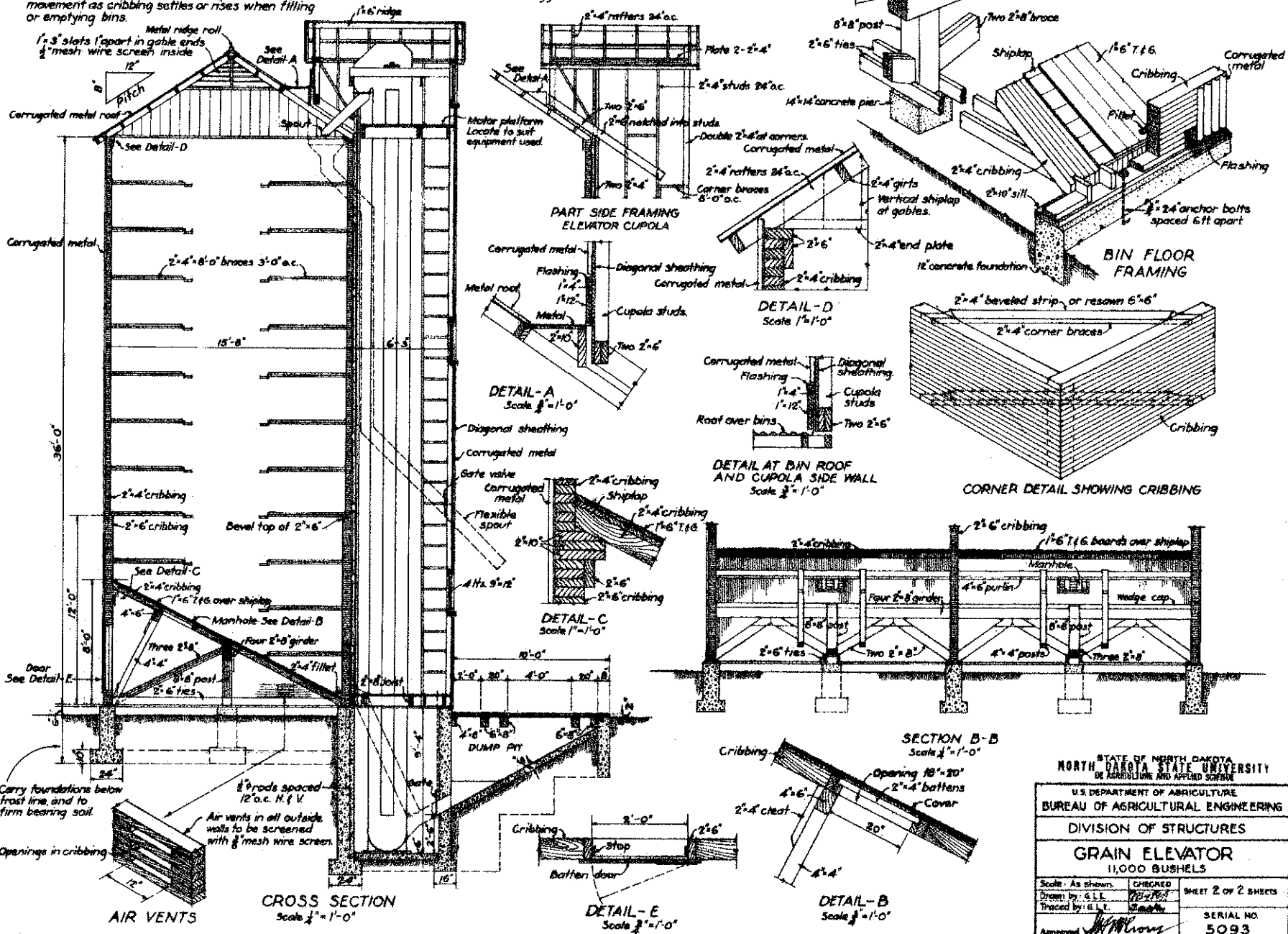


DETAIL-M
Scale $\frac{1}{4}$ " = 1'-0"

STATE OF NORTH DAKOTA NORTH DAKOTA STATE UNIVERSITY DEPARTMENT OF AGRICULTURE AND APPLIED SCIENCE		
U.S. DEPARTMENT OF AGRICULTURE BUREAU OF AGRICULTURAL ENGINEERING		
DIVISION OF STRUCTURES		
GRAIN ELEVATOR 11,000 BUSHELS		
Scale: As shown	CHECKED	SHEET 1 OF 2 SHEETS
Drawn by: G. L. E.	Checked by: G. L. E.	
Traced by: G. L. E.	Checked by: G. L. E.	
Approved: <i>G. L. E.</i>	SERIAL NO.	5093

NOTE
 Cover outside walls with 26 gage galvanized corrugated metal sheets 26 wide by 32 long. Nail sheets 4" from the bottom so that each will lap the sheet below 2". Do not nail at top. This is to permit free movement as cribbing settles or rises when filling or emptying bins.

NOTE
 Cribbing spiked with 40d. nails, spaced 18" o.c. in bottom layers, spacing to be increased gradually until the nails are 36" o.c. in the top layers. Nails to be staggered.



STATE OF NORTH DAKOTA NORTH DAKOTA STATE UNIVERSITY DEPARTMENT OF AGRICULTURE AND APPLIED SCIENCE		
U.S. DEPARTMENT OF AGRICULTURE BUREAU OF AGRICULTURAL ENGINEERING		
DIVISION OF STRUCTURES		
GRAIN ELEVATOR 11,000 BUSHELS		
Scale: As shown.	CHECKED	SHEET 2 OF 2 SHEETS
Drawn by: G.L.E.	10-1-25	
Traced by: G.L.E.	12 months	
Approved: <i>[Signature]</i>		SERIAL NO. 5093