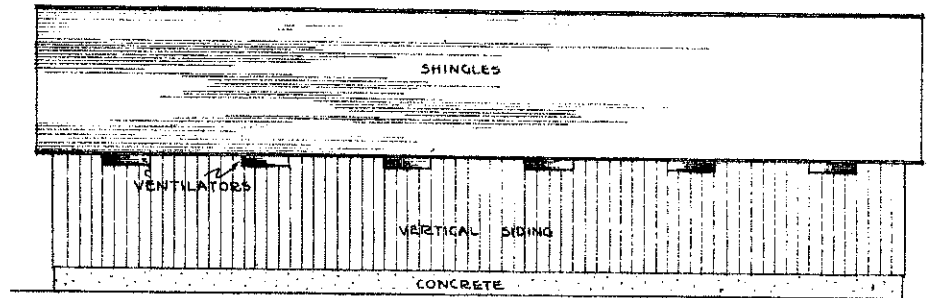
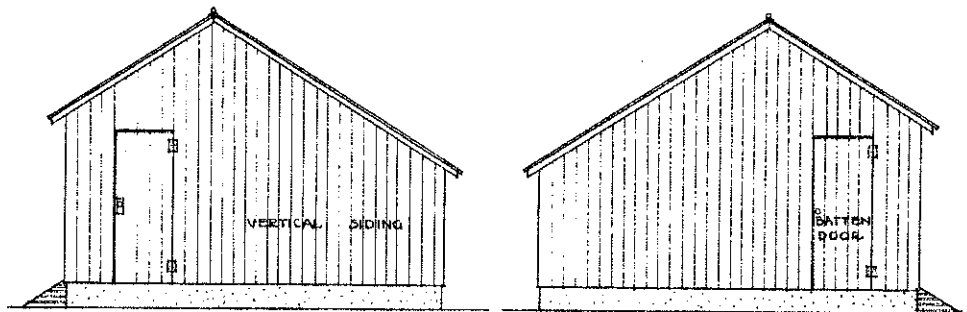


FRONT ELEVATION



REAR ELEVATION



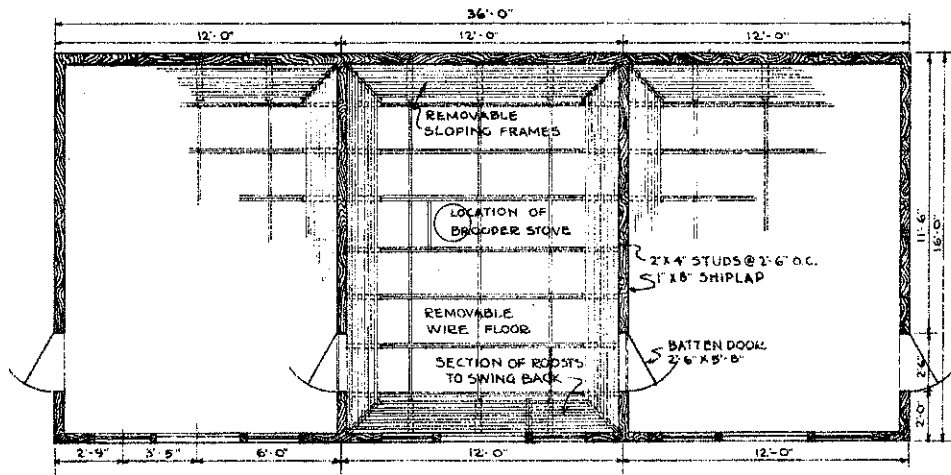
EAST END ELEVATION

WEST END ELEVATION

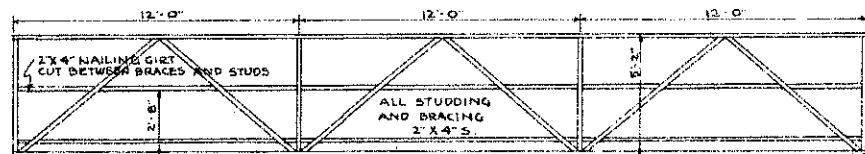
SCALE OF ELEVATIONS 1/4" = 1'-0"

BILL OF MATERIAL			
NO. REQ'D	SIZE	GRADE	REMARKS
40 SACKS			CEMENT
4 1/2 CU.YDS.			SAND
16 CU.YDS.			CRUSHED ROCK OR GRAVEL
3	2'X6'X6'-0"	NO. 1 YP OR FIR	WINDOW SILLS
9	2'X4'X8'-0"	"	RAFTERS
23	2'X4'X16'-0"	"	STUDS-CROSS-TIES- BRACED
19	2'X4'X14'-0"	"	STUDDING
81	2'X4'X12'-0"	"	PLATES-RAFTERS-HEADERS-ETC.
7	2'X4'X10'-0"	"	STUDS-FILLERS-RAFTERS
210 B.M.	6'-5'-0"	D&M SIDING	REAR WALL
200 B.M.	6'-7'-0"	"	FRONT WALL
96 B.M.	6'-12'-0"	"	END WALLS
324 B.M.	6'-16'-0"	"	END WALLS
230 B.M.	8'-12'-0"	NO. 1 SHIPLAP	PARTITIONS
1	1'X8'X12'-0"	NO. 1 COMMON	VENTILATORS
12	1'X4'X10'-0"	"	CLEATS
10	1'X4'X12'-0"	NO. 1 FINISH	FREIZE
132 LIN. FT.	1/2" X 3/4"	"	WINDOW STOP
6	5/16" X 12' LT.	PLAIN RAIL	WINDOWS
6 PR.			WINDOW BOLTS
370 B.M.	1'X6'X12'-0"	NO. 2 COMMON	SHEATHING
32 BUNDLES	5-2	CLEAR	SHINGLES
40 LIN. FT.	3'-0"	1/2" GALV.	HARDWARE CLOTH
40 LIN. FT.		GALV.	RIDGE ROLL
12	4'-0" X 12'-0"	"	INSULATING BOARD
40	1/2" X 10"	"	BOLTS FOR SILLS
1 LB.	3/4"	GALV.	STAPLES
4 PR.	6"	"	T-HINGES
6 PR.	3"	"	"
30 LBS.	16 d	"	NAILS
25 LBS.	8 d	"	"
15 LBS.	7 d	BOX	"
10 LBS.	6 d	"	"
35 LBS.	4 d	SHINGLE	"
3 GAL.			PAINT
126'-0"	1" X 3"		FASCIA
3	1'X6'X12'-0"		RIDGE BOARD
4	2'X6'X16'-0"		SILLS
6	2'X6'X12'-0"		"
14	1'X6'X10'-0"		VERTICAL TIES - BATTENS
45'-0"	1'X2"		MUSLIN FRAMES
4 YDS.	24"		MUSLIN

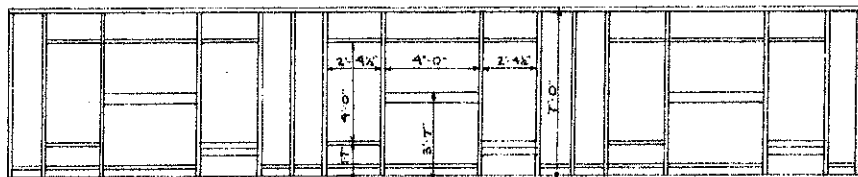
COOPERATIVE EXTENSION WORK IN  
 AGRICULTURE AND HOME ECONOMICS  
 STATE OF NORTH DAKOTA  
 NORTH DAKOTA AGRICULTURAL COLLEGE  
 AND  
 U. S. DEPT. OF AGRICULTURE COOPERATING  
 EXT. AGR'L. ENGINEER - FARGO, N. DAK.  
**STATIONARY BROODER HOUSE**  
 MIDWEST 72703-331E X. 329: SHEET 1 OF 3



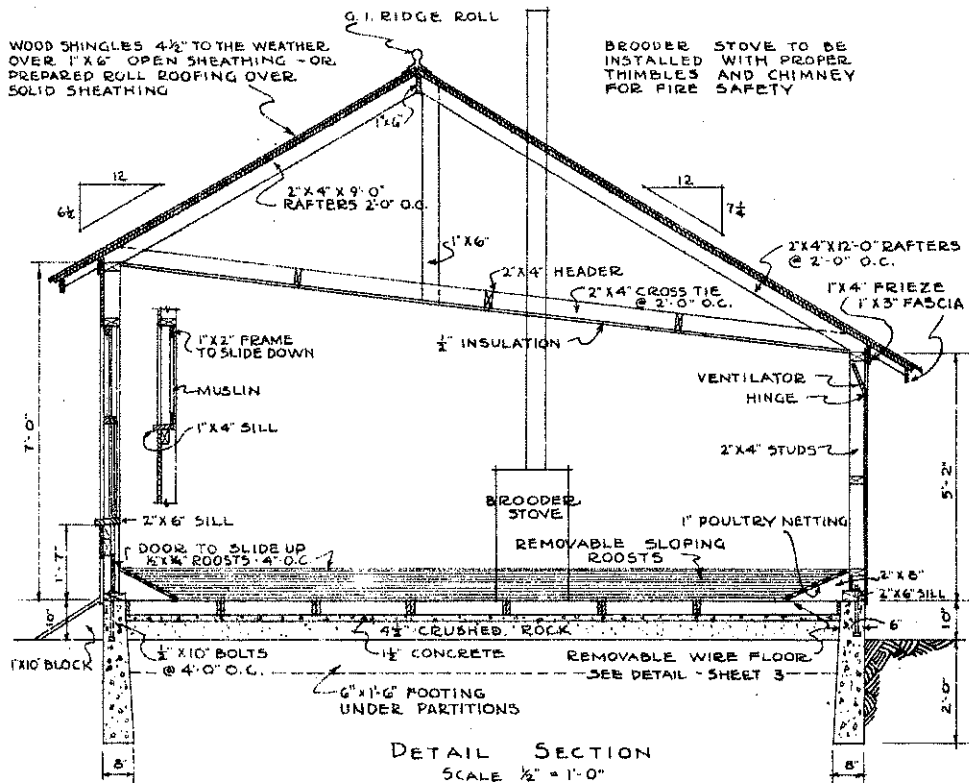
FLOOR PLAN  
SCALE 1/4" = 1'-0"



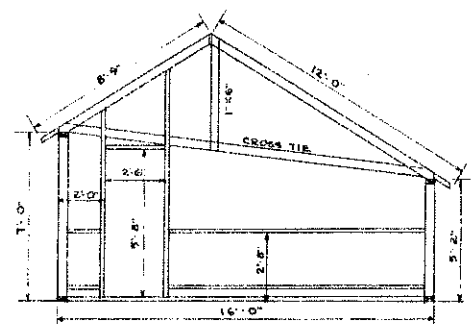
REAR WALL FRAMING



FRONT WALL FRAMING  
SCALE 1/4" = 1'-0"



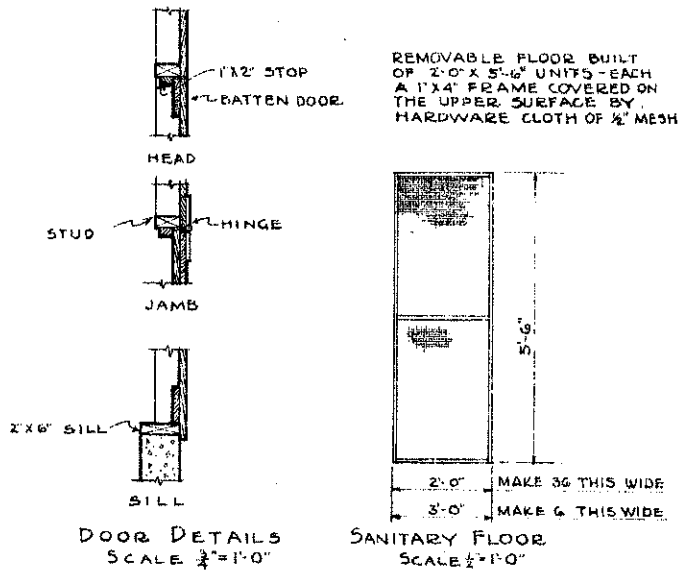
DETAIL SECTION  
SCALE 1/2" = 1'-0"



END FRAMING  
SCALE 1/4" = 1'-0"

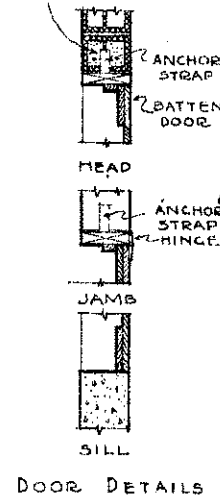
COOPERATIVE EXTENSION WORK IN  
AGRICULTURE AND HOME ECONOMICS  
STATE OF NORTH DAKOTA  
NORTH DAKOTA AGRICULTURAL COLLEGE  
AND  
U.S. DEPT. OF AGRICULTURE COOPERATING  
EXT. AGR'L ENGINEER - FARGO, N.DAK.  
STATIONARY BROODER HOUSE  
MIDWEST 72703 7-1 EX. 3292 SHEET 0 OF 3

NOTE: ALL LINTELS OF TILE  
 FILLED WITH CONCRETE  
 TO BE AT LEAST 1'-0" LONGER  
 THAN WIDTH OF OPENING  
 2- 1/2"  $\phi$  BARS PLACED  
 NEAR BOTTOM OF CONC.

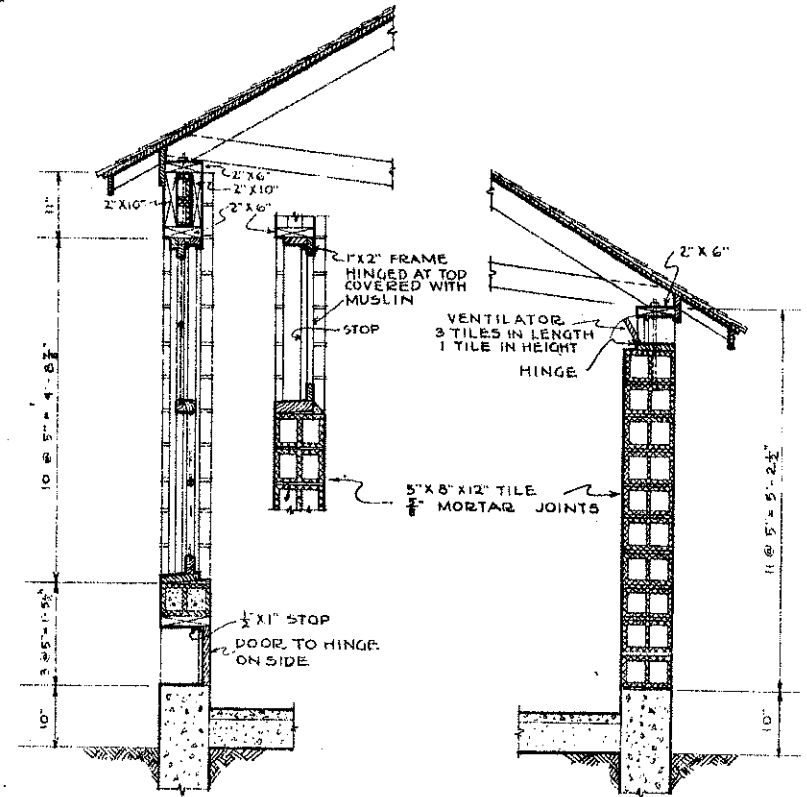


DOOR DETAILS  
 SCALE 3/4" = 1'-0"

SANITARY FLOOR  
 SCALE 1/2" = 1'-0"



DOOR DETAILS



FRONT WALL

REAR WALL

MASONRY WALL CONSTRUCTION  
 SCALE 3/4" = 1'-0"

BILL OF MATERIAL			
NO. REQ.	SIZE	GRADE	REMARKS
<b>SANITARY FLOOR</b>			
64	1'x4'x12'-0"	COM. FIR OR W.P.	FRAMES
3	1'x4'x18'-0"	"	FRAMES
5 LBS.	7d	BOX	NAILS
200 LIN. FT.	1/2" MESH	GALVANIZED	HARDWARE CLOTH 24"
33 "	"	"	" 86"
6 LBS.	3/4"	"	STAPLES
<b>SLOPING ROOSTS - REMOVABLE</b>			
4	2'x8'x12'-0"	COM. FIR OR W.P.	SUPPORTS FOR ROOSTS
6	1'x8'x4'-0"	"	"
720 LIN. FT.	1/2" x 3/4"	PARTING STOP	ROOSTS
150 LIN. FT.	1" MESH	GALVANIZED	POULTRY NETTING 18"
2 LBS.	3/4" INCH	"	STAPLES
2 LBS.	6d	BOX	NAILS
<b>ROOSTS</b>			
15	2'x8'x12'-0"	NO. 1 Y.P.	ROOSTS

COOPERATIVE EXTENSION WORK IN  
 AGRICULTURE AND HOME ECONOMICS  
 STATE OF NORTH DAKOTA  
 NORTH DAKOTA AGRICULTURAL COLLEGE  
 AND  
 U. S. DEPT. OF AGRICULTURE COOPERATING  
 EXT. AGR'L. ENGINEER - FARGO, NDAK.  
**STATIONARY BROODER HOUSE**  
 DRAWING 72730-13 EX. 5293 SHEET 3 OF 3