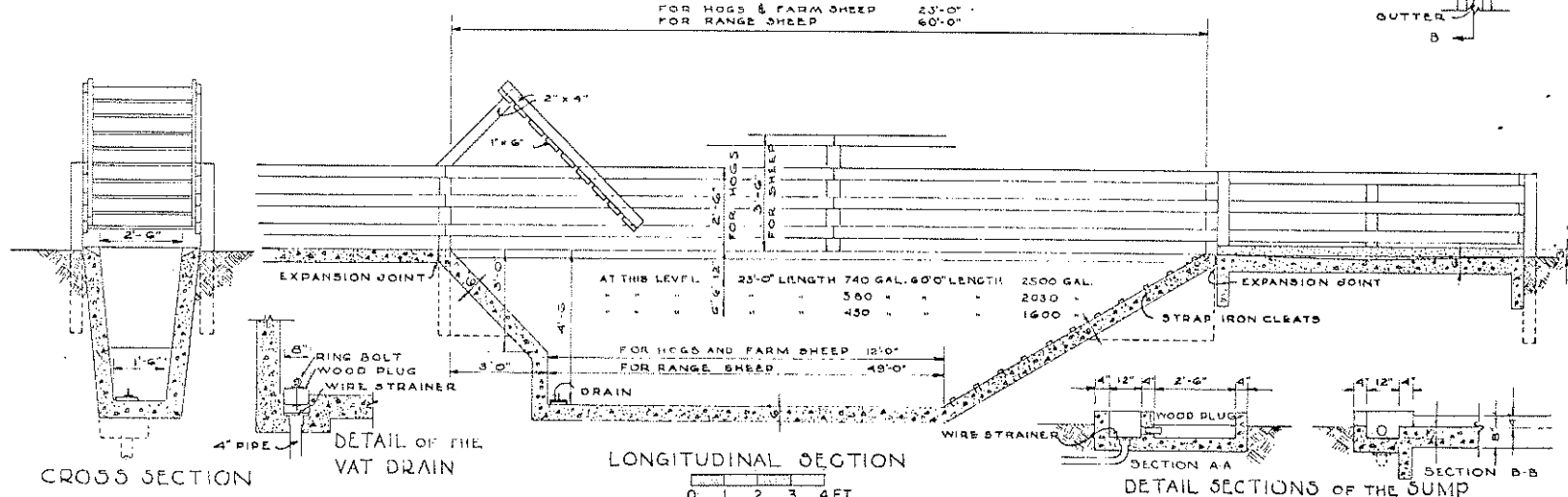


PLAN



LONGITUDINAL SECTION

CROSS SECTION

BILL OF MATERIALS

	23' LENGTH	60' LENGTH	DRAINING PEN
CEMENT	31 SACKS	72 SACKS	18 SACKS
SAND	2.25 CU. YDS.	3.25 CU. YDS.	1.33 CU. YDS.
GRAVEL	4.50 CU. YDS.	10.00 CU. YDS.	2.44 CU. YDS.

FITTINGS

20 LIN. FT. 2"x1 1/2" STRAP IRON FOR CLEATS  
 SUFFICIENT 4" DRAIN PIPE TO SUIT LOCATION  
 14' LIN. FT. 2" GALV. IRON PIPE FOR SUMP  
 2-90° 2" GALV. IRON ELBOWS FOR SUMP  
 GALV. IRON WIRE STRAINERS FOR SUMP & VAT  
 1- 1/2" RING BOLT FOR VAT DRAIN

	FOR HOGS	FOR SHEEP
FENCE	23-4"x4" x 6" POSTS	23-4"x4" x 7" POSTS
	45-2"x4" x 12" RAILS	60-2"x4" x 12" RAILS
	2-2"x6" x 12" BATTENS	2-2"x6" x 14" BATTENS

2-2"x4" x 10' BLIND  
 3-1"x6" x 14" "  
 4 PAIRS HEAVY 6" TEE HINGES

ADAPTED FROM U.S.D.A. PLAN

COOPERATIVE EXTENSION WORK IN AGRICULTURE AND HOME ECONOMICS STATE OF MARYLAND UNIVERSITY OF MARYLAND AND U.S. DEPT. OF AGRICULTURE COOPERATING EXT. AGR. ENGINEER-COLLEGE PARK, MD.

DIPPING VAT MIDWEST 77631 133 25 35 50 51 52 53 54

FILE NO. 773-1