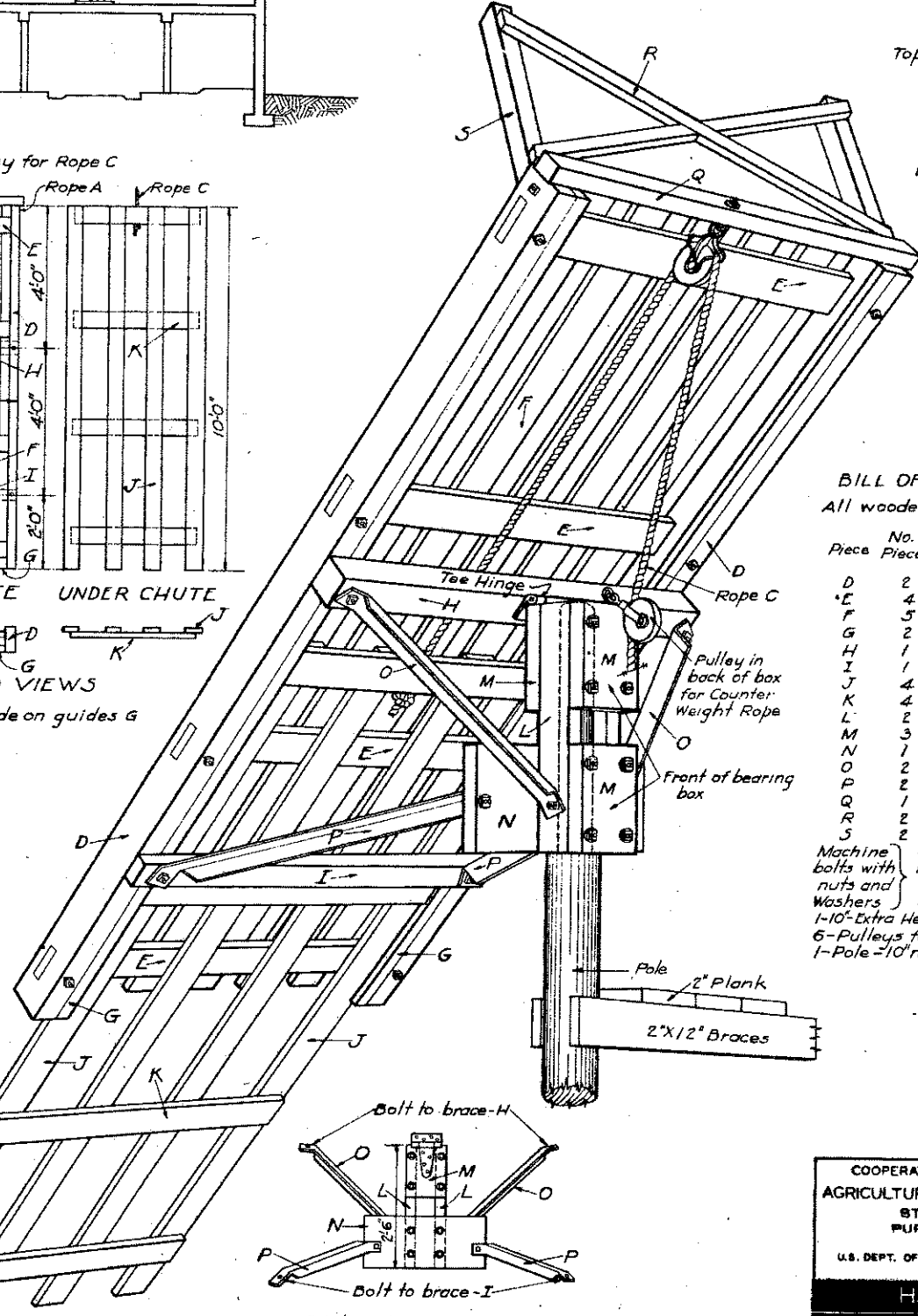
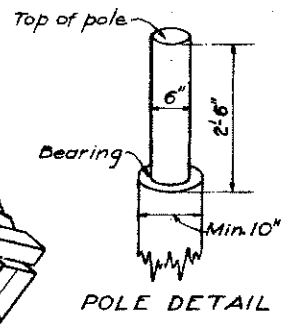
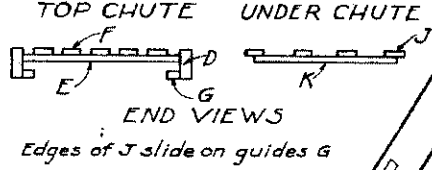
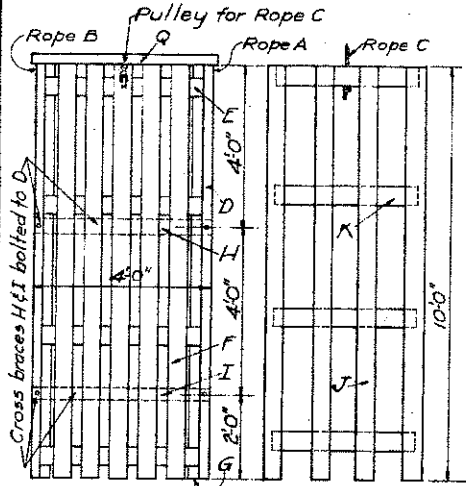
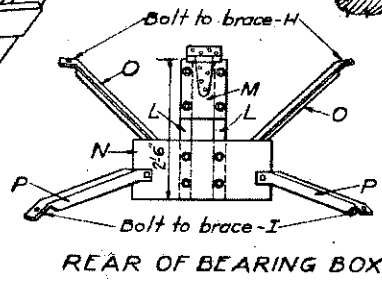


METHOD OF OPERATING CHUTE



BILL OF MATERIALS
All wooden parts to be of oak

Piece	No. of Pieces	Size	Length
D	2	2 1/2 x 5"	10'-0"
E	4	3/8 x 4"	4'-0"
F	5	3/8 x 5"	10'-0"
G	2	3/8 x 2"	10'-0"
H	1	4 x 4"	4'-0"
I	1	2 x 3"	4'-0"
J	4	3/8 x 5"	10'-0"
K	4	3/8 x 4"	3'-2"
L	2	2 x 6"	2'-6"
M	3	2 x 10"	12"
N	1	2 x 12"	2'-6"
O	2	2 x 2"	3'-2"
P	2	2 x 2"	4'-3"
Q	1	2 x 4"	4'-3"
R	2	1 x 4"	5'-0"
S	2	2 x 4"	3'-0"
Machine bolts with nuts and Washers	8 16 2 4	1/2" 1/2" 1/2" 1/2"	6" 12" 9" 3"
1-10" Extra Heavy Tee Hinge			
5-Pulleys for 3/8" rope & eyebolts			
1-Pole - 10" min. dia. at top.			



COOPERATIVE EXTENSION WORK IN
AGRICULTURE AND HOME ECONOMICS
STATE OF INDIANA
PURDUE UNIVERSITY
AND
U.S. DEPT. OF AGRICULTURE COOPERATING.

HAY CHUTE
PA. EX 5414 SHEET 1 of 1

STATE OF NORTH DAKOTA
NORTH DAKOTA STATE UNIVERSITY
OF AGRICULTURE AND APPLIED SCIENCE

5414