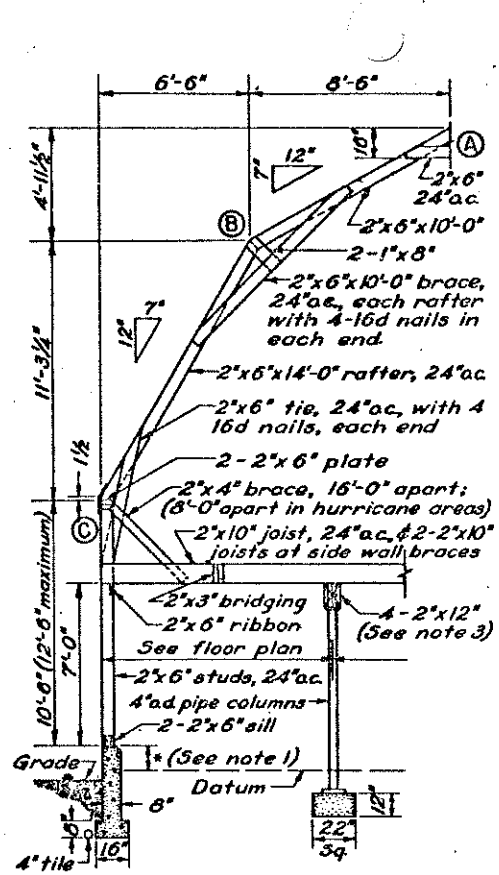
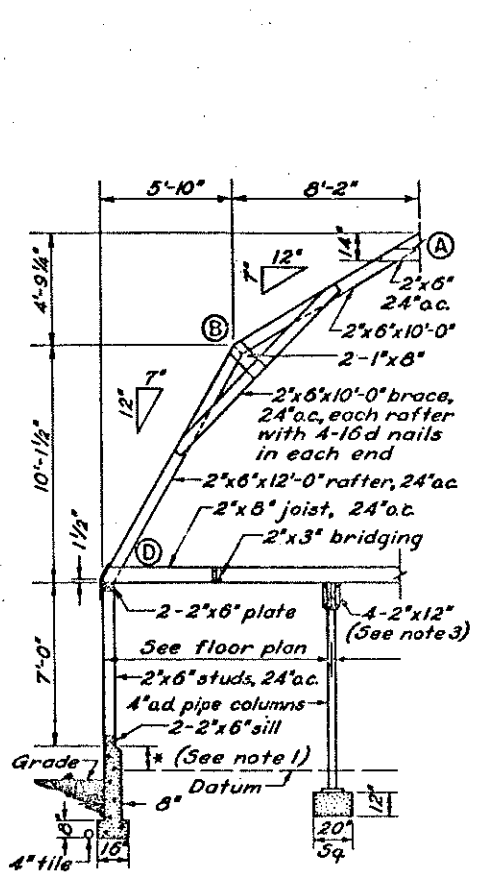


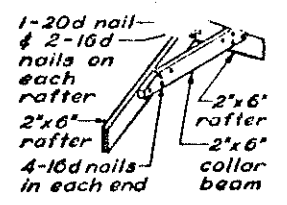
32'-0" BARN - 2 STORY
 LOOSE HAY - 0.85 TONS PER LIN. FT.
 BALED HAY - MAXIMUM DEPTH 10 FT.



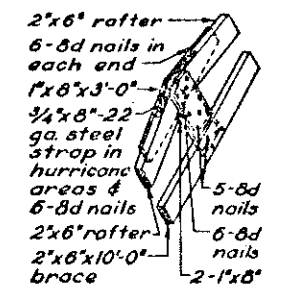
30'-0" BARN - 2 STORY
 LOOSE HAY - 0.66 TONS PER LIN. FT.
 BALED HAY - MAXIMUM DEPTH 8 FT.



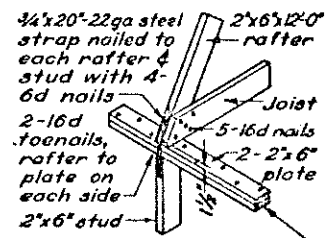
28'-0" BARN - 1 1/2 STORY
 LOOSE HAY - 0.50 TONS PER LIN. FT.
 BALED HAY - MAXIMUM DEPTH 8 FT.



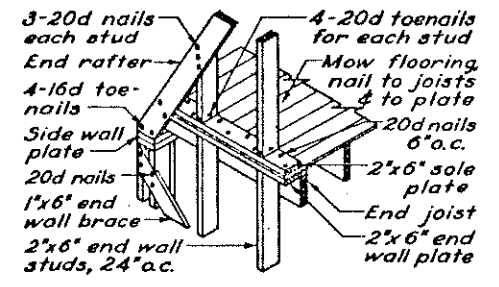
DETAIL A



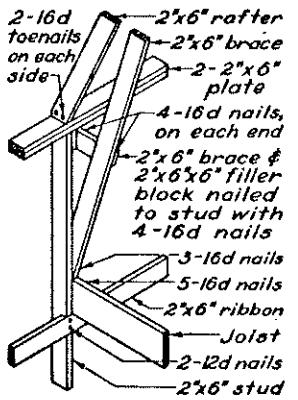
DETAIL B



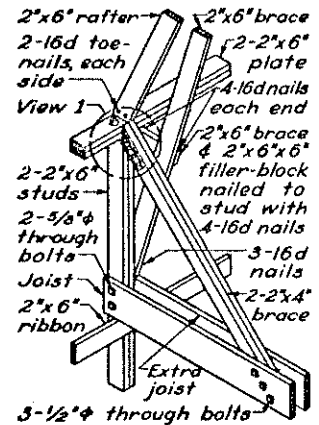
DETAIL D



28'-0" BARN END-WALL FRAMING



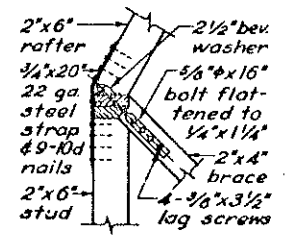
**DETAIL C
 NORMAL SIDE-WALL
 CONNECTION**



**DETAIL C
 SIDE-WALL BRACE**

NOTES:

- 1 *Variable dimension, see foundation detail (Dwg 5661).
- 2 Use 4-2x12" girders if columns are spaced 10'-6" or less apart. Column spacing not to exceed 12'-0".
- 3 Use 4-2x10" girders if columns are spaced 10'-6" or less apart. Column spacing not to exceed 12'-0".
4. Wall foundations to extend below frost to solid ground. Carry column footings to solid ground.



VIEW 1

COOPERATIVE EXTENSION WORK IN AGRICULTURE AND HOME ECONOMICS		
AND UNITED STATES DEPARTMENT OF AGRICULTURE COOPERATING		
BRACED RAFTER FRAMING SPANS 28 FEET TO 32 FEET		
USDA '49	EX. 5626	SHEET 1 OF 1