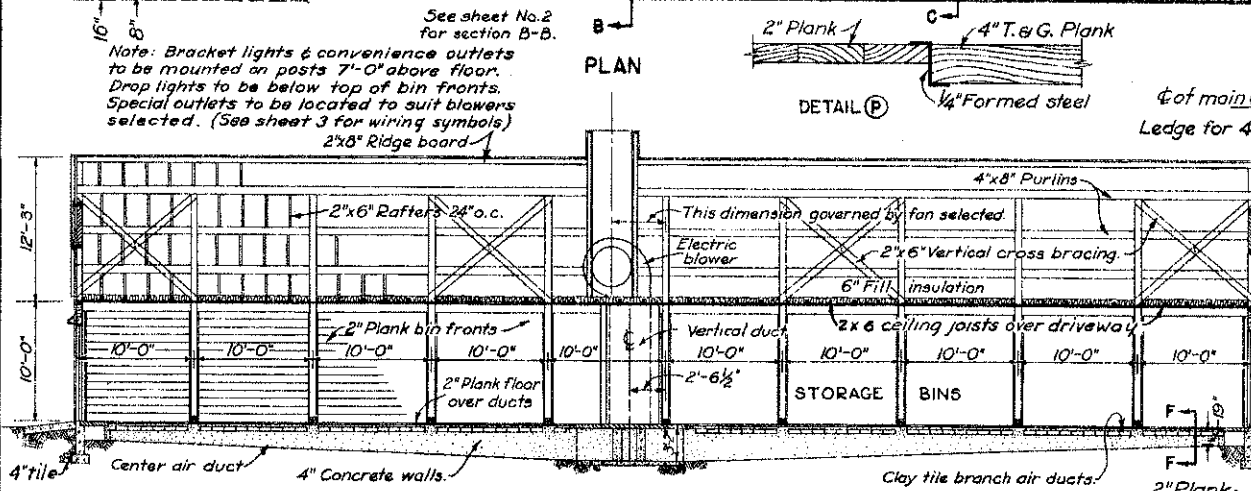
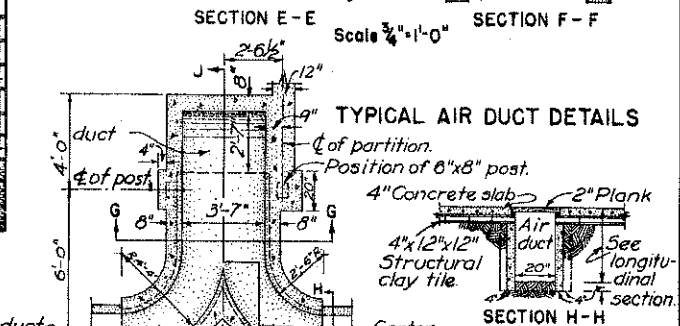
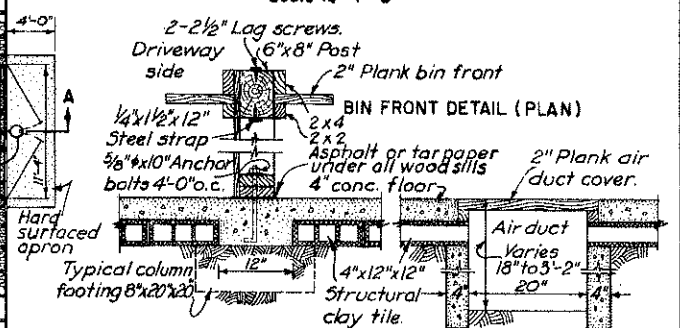
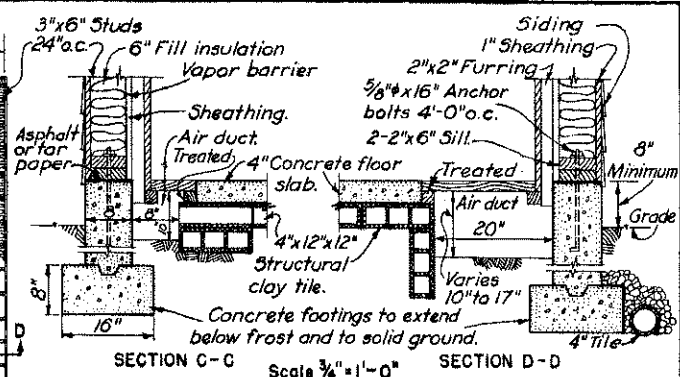
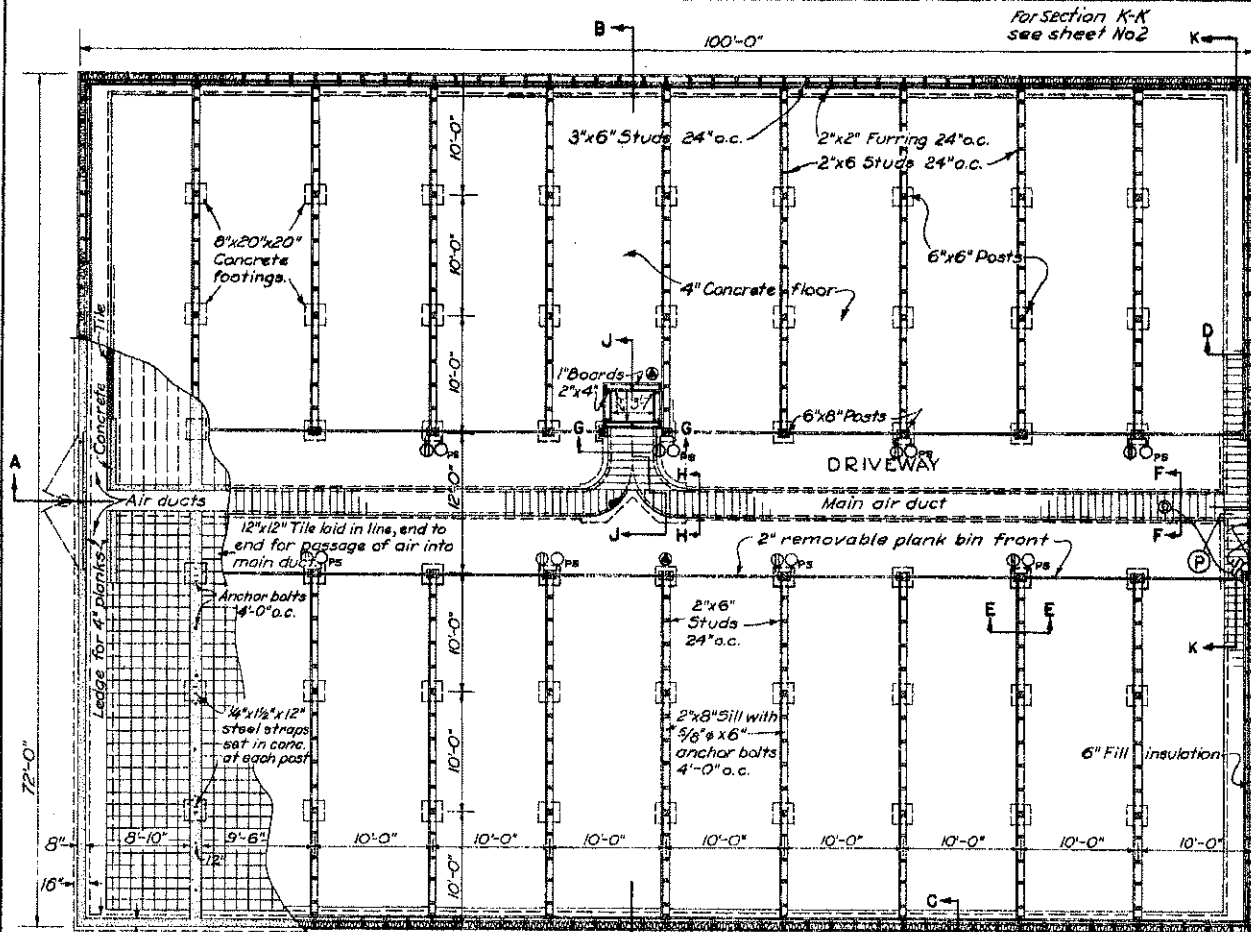


For Section K-K see sheet No.2

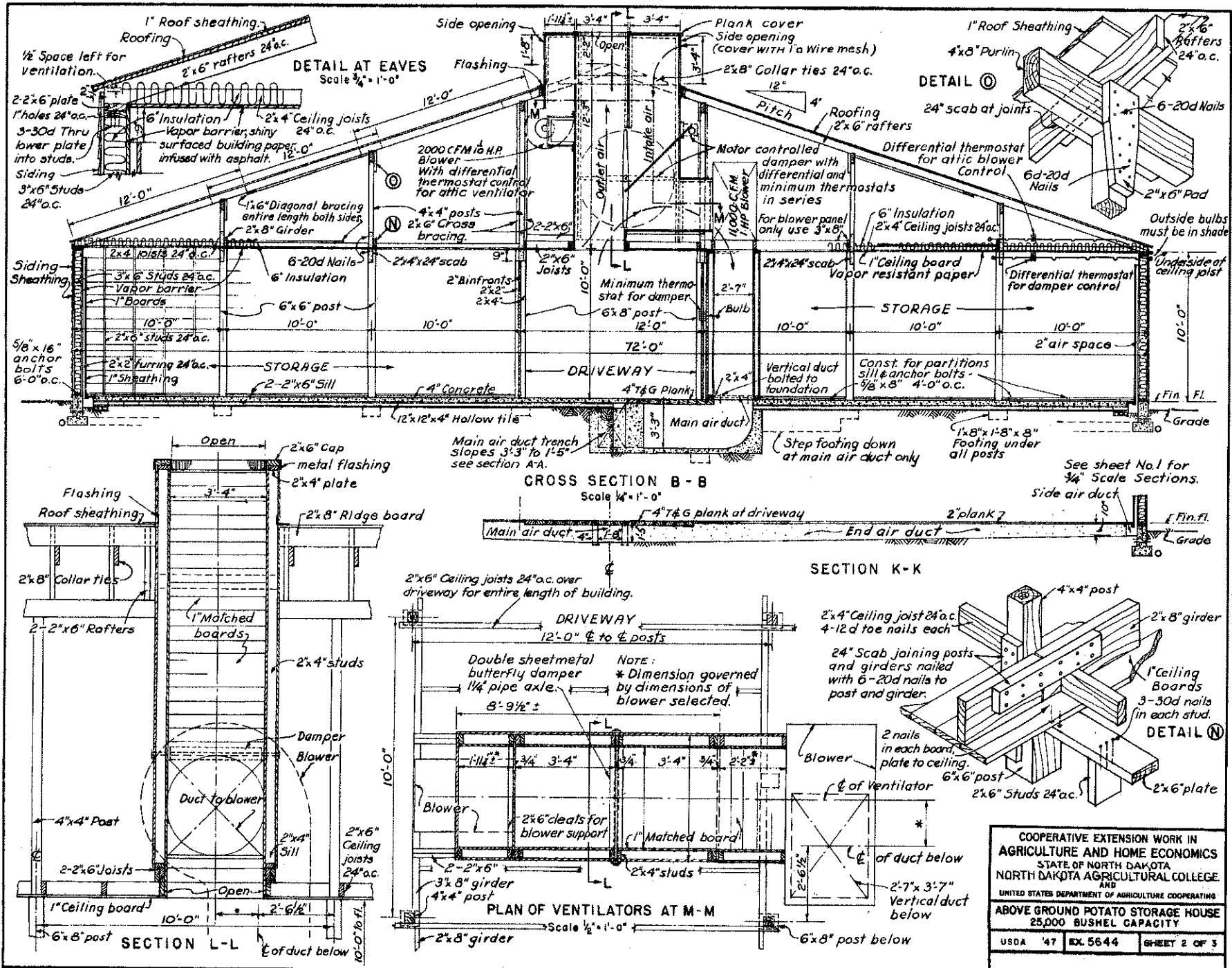


Note: Bracket lights & convenience outlets to be mounted on posts 7'-0" above floor. Drop lights to be below top of bin fronts. Special outlets to be located to suit blowers selected. (See sheet 3 for wiring symbols)

NOTE: 12" Wide bin partition footings and 20"x20" column footings to be poured integrally with floor.

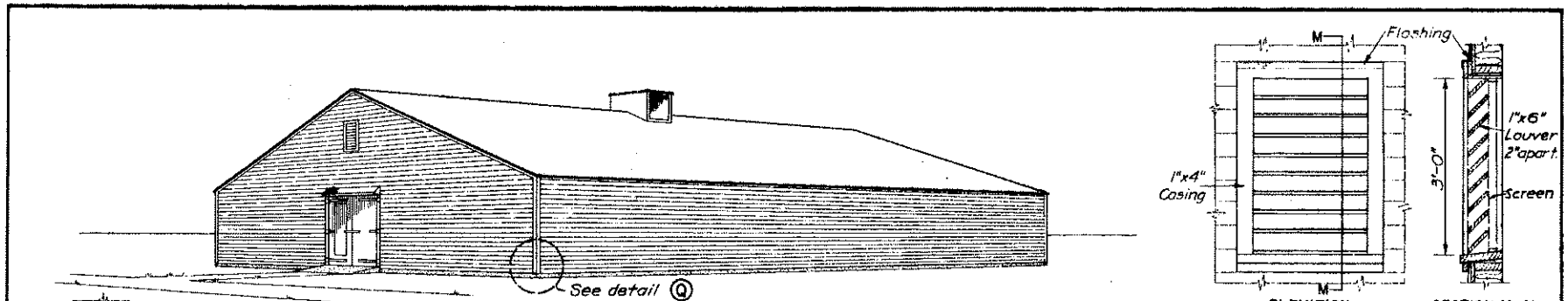
COOPERATIVE EXTENSION WORK IN AGRICULTURE AND HOME ECONOMICS
STATE OF NORTH DAKOTA
NORTH DAKOTA AGRICULTURAL COLLEGE
AND
UNITED STATES DEPARTMENT OF AGRICULTURE COOPERATING
ABOVE GROUND POTATO STORAGE HOUSE
25,000 BUSHEL CAPACITY

USDA	'47	EX. 5644	SHEET 1 OF 3
------	-----	----------	--------------

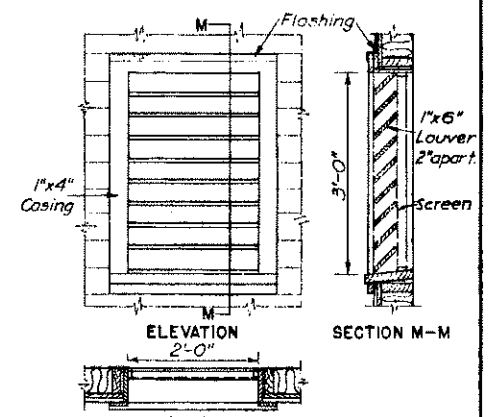


COOPERATIVE EXTENSION WORK IN
 AGRICULTURE AND HOME ECONOMICS
 STATE OF NORTH DAKOTA
 NORTH DAKOTA AGRICULTURAL COLLEGE
 AND
 UNITED STATES DEPARTMENT OF AGRICULTURE COOPERATING
 ABOVE GROUND POTATO STORAGE HOUSE
 25,000 BUSHEL CAPACITY

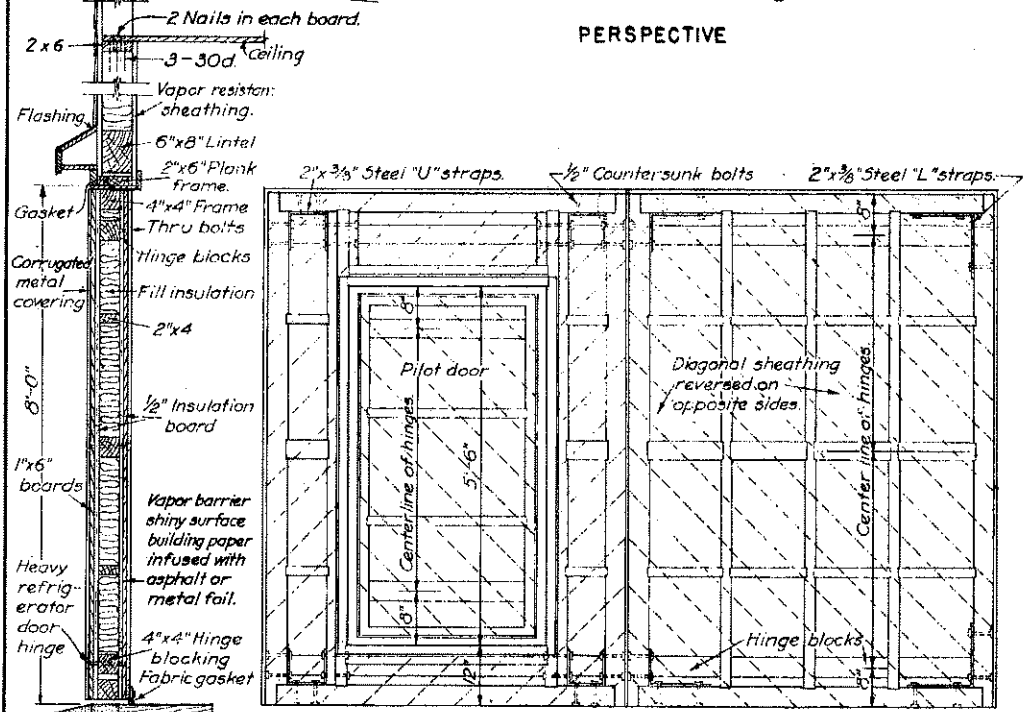
USDA '47 EX. 5644 SHEET 2 OF 3



PERSPECTIVE

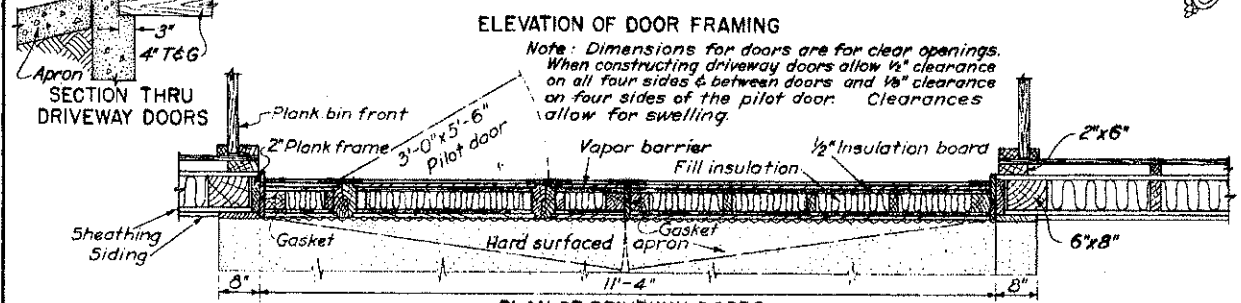


LOUVER DETAILS
SCALE 3/4" = 1'-0"



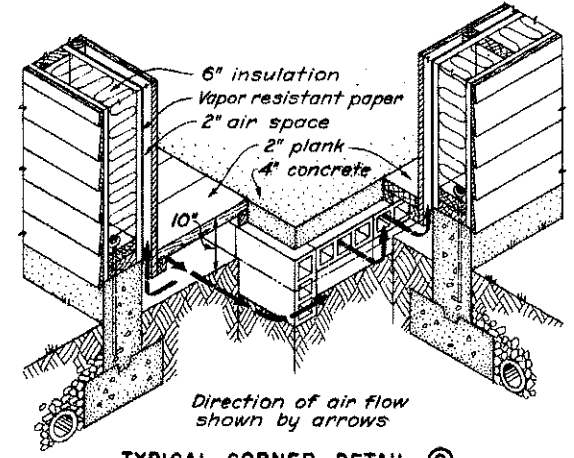
ELEVATION OF DOOR FRAMING

Note: Dimensions for doors are for clear openings. When constructing driveway doors allow 1/2" clearance on all four sides & between doors and 1/8" clearance on four sides of the pilot door. Clearances allow for swelling.



PLAN OF DRIVEWAY DOORS
SCALE 3/4" = 1'-0"

- Wiring Symbols:
- Bracket light
 - Bracket light, pull switch
 - ⊙ Drop light
 - ⊕ Double convenience outlet
 - Special purpose outlet
 - | Wall switch



TYPICAL CORNER DETAIL Q

COOPERATIVE EXTENSION WORK IN
AGRICULTURE AND HOME ECONOMICS
STATE OF NORTH DAKOTA
NORTH DAKOTA AGRICULTURAL COLLEGE
AND
UNITED STATES DEPARTMENT OF AGRICULTURE COOPERATING
ABOVE-GROUND POTATO STORAGE HOUSE
25,000 BUSHEL CAPACITY
USDA '47 EX. 5644 SHEET 3 OF 3