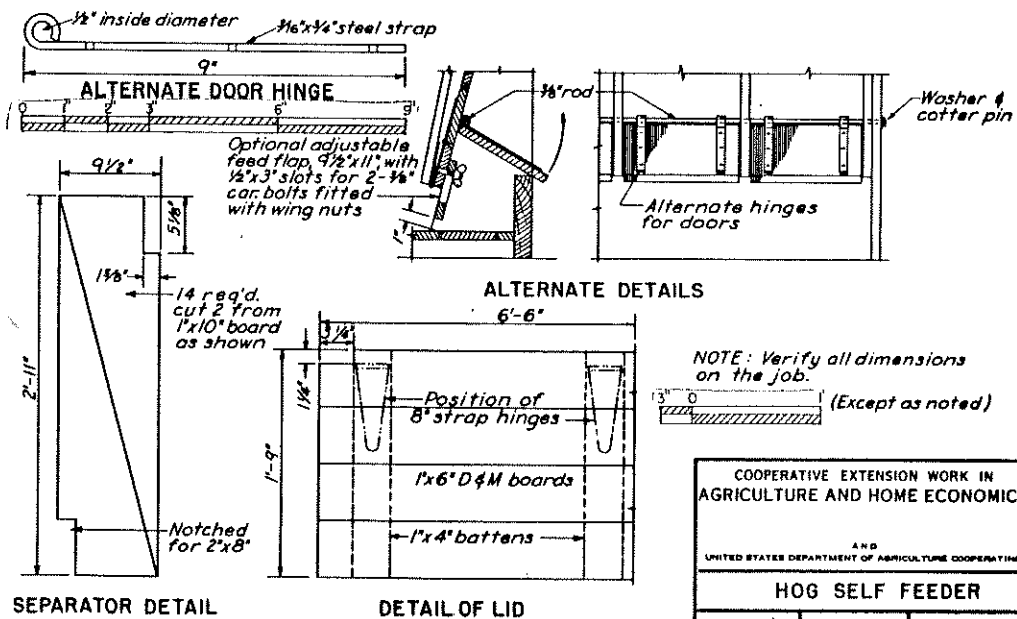


BILL OF MATERIALS (Does not include alternates)		
Item	Description	Quantity
Side stringers	2"x8"x12'-0"	1
Floor joists	2"x4"x10'-0"	1
Ridge & ridge blocks	2"x4"x8'-0"	1
Roof boards	1"x6"x14'-0" D&M	5
Flooring & side boards	1"x6"x6'-0" D&M	17
Doors	1"x10"x12'-0"	1
End boards & separators	1"x10"x12'-0"	4
Agitator, lower member	1"x6"x12'-0"	1
Center feed divider	1"x6"x6'-0"	1
Ridge cap	1"x6"x14'-0"	1
Center feed divider	1"x4"x6'-0"	1
Battens	1"x4"x10'-0"	1
Nailing strips, rafters & ties	1"x4"x12'-0"	2
Agitators, vertical member	1"x4"x14'-0"	2
Cover strip, 1/2 of floor	1"x3"x6'-0"	1
Hinges (with screws) for lid	8" strap (offset)	4
" " " " , doors	4" " "	24
" " " " , agitators	4" " "	36
Metal ridge roll	To suit	6 ft.
" door covering	26 ga. g.i. or equal	12 sq. ft.
Roofing	Slate-surfaced roll roof or metal	28 sq. ft. approx.
Nails (approx. as shown, plus roofing nails & misc. larger nails)	6d galvanized 8d "	3 3/4 lbs. 3/4 "
Wire ties	Heavy	20 ft.



SEPARATOR DETAIL

DETAIL OF LID

This dwg. based on Midwest plan EX. 5383

NOTE: Verify all dimensions on the job.  
(Except as noted)