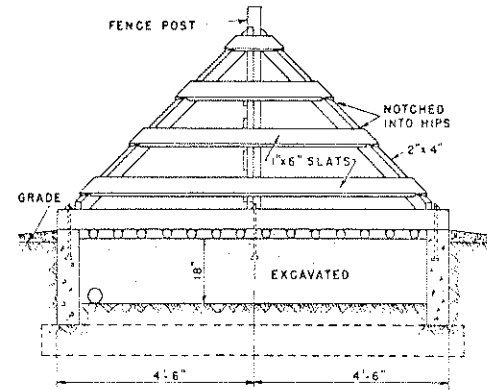
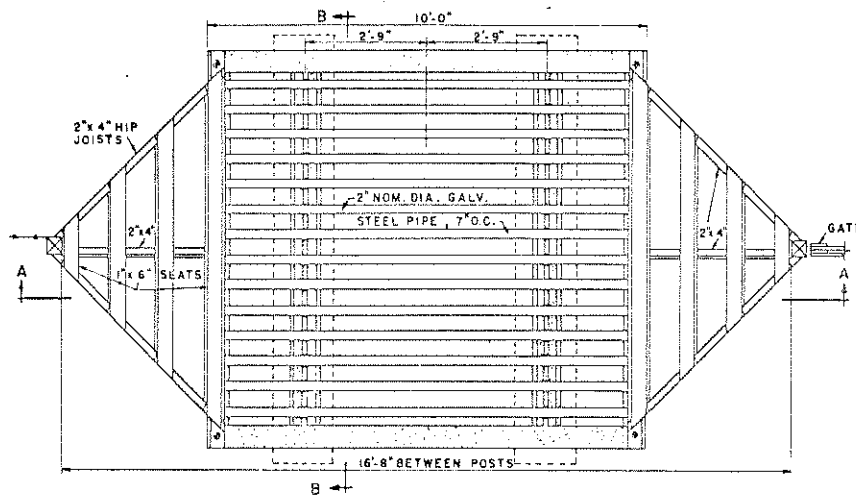


SECTION A-A



SECTION B-B



PLAN

BILL OF MATERIALS

LUMBER	
FRAMING:	1-PCS. 2"x4"x12'-0"
	2- " 2"x4"x14'-0"
SLATS:	6- " 1x6"x12'-0"
GUARD RAILS:	2- " 4x6"x9'-0"
CONCRETE:	
	2 3/4 CU. YDS. (1:3:5 MIXTURE)
CEMENT:	13 SACKS
SAND:	1.4 CU. YDS.
AGGREGATE:	2.35 CU. YDS.
MISCELLANEOUS	
PIPES:	14-PCS. 2" NOM. DIA. EXTRA STRONG GALV. STEEL PIPE OR RAILS, 10'-0" LONG
ANCHOR BOLTS:	6- 5/8"x16"
REINF. RODS:	4- 2 1/2"x9'-0"

NOTE: A WIDE GATE ADJACENT TO GUARD IS SUGGESTED FOR PASSAGE OF EXTRA WIDE EQUIPMENT AND LIVESTOCK.
ALL WOOD TO BE TREATED WITH PRESERVATIVE.

SCALE: 0 1 2 3 FT.

COOPERATIVE EXTENSION WORK IN
AGRICULTURE AND HOME ECONOMICS
DEPARTMENT OF AGRICULTURAL ENGINEERING
UNIVERSITY OF MARYLAND
AND
UNITED STATES DEPARTMENT OF AGRICULTURE COOPERATING

CATTLE GUARD
CONCRETE AND STEEL

USDA '52 EX. 5752 SHEET 1 OF 1