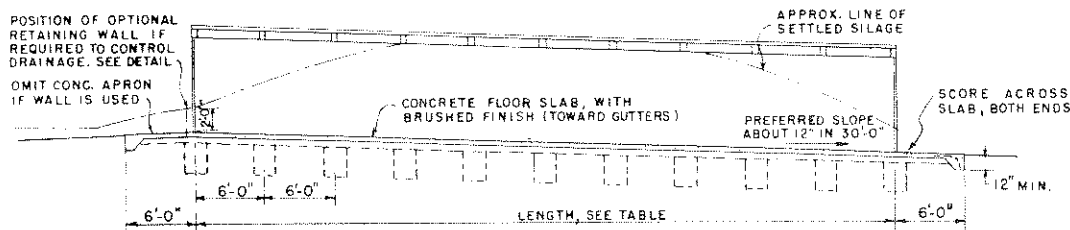


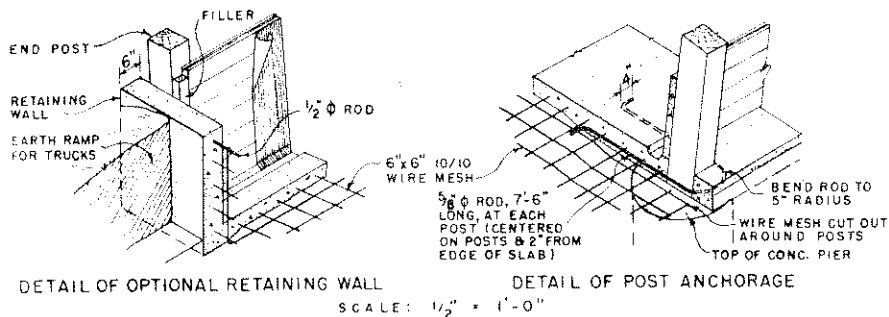
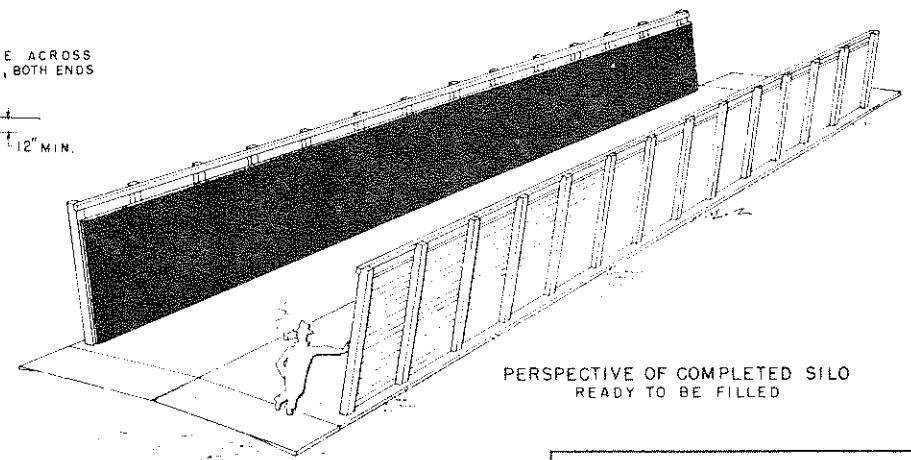
TYPICAL CROSS SECTION
SCALE: $\frac{1}{2}'' = 1'-0''$

APPROXIMATE CAPACITIES					
HERD SIZE	WIDTH OF SILO	FEEDING PERIOD			CAPACITY FOR EACH 6 FT. OF LENGTH
		120 DAYS	175 DAYS	210 DAYS	
23 HEAD	12 FT.	87 TONS	125 TONS	150 TONS	12½ TONS
30 "	16 "	114 "	163 "	196 "	16 "
37 "	20 "	141 "	202 "	242 "	20 "
44 "	24 "	168 "	240 "	288 "	24 "
52 "	28 "	195 "	278 "	334 "	28 "
59 "	32 "	222 "	317 "	380 "	32 "

- CAPACITY IS BASED ON SILAGE WEIGHT OF 40 LBS. PER CUBIC FOOT AND SETTLED DEPTH OF 8 FEET, EXCEPT AT ENDS.
 - WIDTH OF SILO IS BASED ON HERD SIZE AND ON AN AVERAGE CONSUMPTION OF 60 LBS. OF SILAGE PER ANIMAL PER DAY.
 - LENGTH OF SILO IS BASED ON 4" DAILY RATE OF USE FOR WARM WEATHER CONDITIONS. LENGTH MAY BE VARIED IN UNITS OF 6 FEET.
 - FOR SELF-FEEDING, WITH FREE ACCESS, A SILO WIDTH OF 3' TO 6' PER HEAD IS REQUIRED.
- DETAILS OF MOVABLE FENCES FOR SELF-FEEDING ARE SHOWN ON PLAN NO. 5801.



TYPICAL LONGITUDINAL SECTION
SCALE: $\frac{1}{8}'' = 1'-0''$



DETAIL OF OPTIONAL RETAINING WALL

DETAIL OF POST ANCHORAGE

SCALE: $\frac{1}{2}'' = 1'-0''$

NOTE: ALL CONCRETE TO BE 1:2½:3½ MIX, WITH NOT MORE THAN 6 GALLONS OF WATER PER BAG OF CEMENT.

ALL WOOD SHOULD BE PRESSURE-TREATED WITH PRESERVATIVE (AFTER CUTTING) TO 8 LBS. PER CUBIC FOOT RETENTION.

STAGGER END JOINTS OF PLANKS IN EACH ROW SO JOINTS FALL ON ALTERNATE POSTS.

COOPERATIVE EXTENSION WORK IN
AGRICULTURE AND HOME ECONOMICS
STATE OF NORTH DAKOTA
NORTH DAKOTA AGRICULTURAL COLLEGE
AND
UNITED STATES DEPARTMENT OF AGRICULTURE COOPERATING

BUNKER SILO

USDA '54 EX. 5800 SHEET 1 OF 1