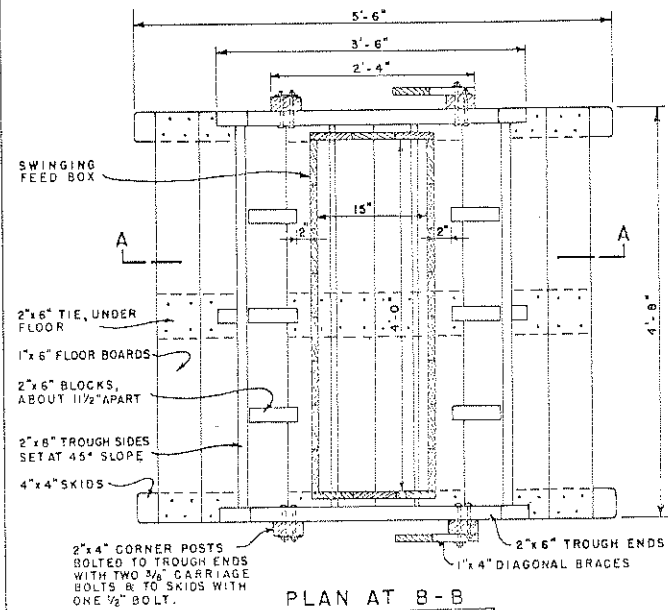
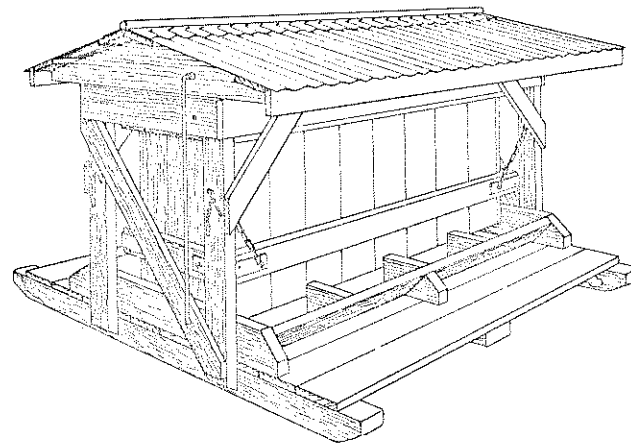


CROSS SECTION AT A-A

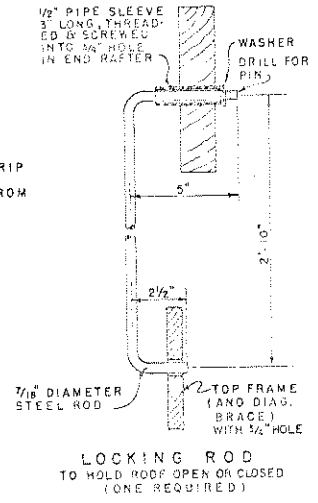
SIDE ELEVATION
CUT AWAY TO SHOW CONSTRUCTION



PLAN AT B-B
SCALE: 0 1 FT.



PERSPECTIVE VIEW OF COMPLETED FEEDER
NO SCALE



MATERIAL LIST			
THIS LIST OF MATERIALS IS PREPARED FOR ESTIMATING PURPOSES, IF USED FOR THE PURCHASE OF MATERIALS, THE QUANTITIES SHOULD BE VERIFIED BY THE BUILDER.			
ITEM	SIZE	PIECES	
SKIDS (PRESSURE TREATED)	4" x 4" x 12'-0"	1	
TROUGH ENDS, BLOCKS & TIES	2" x 6" x 12'-0"	2	
TROUGH SIDES	2" x 6" x 14'-0"	1	
CORNER POSTS	2" x 4" x 12'-0"	1	
TOP FRAME	1" x 4" x 15'-0"	1	
BRACES	2" x 4" x 12'-0"	2	
FEED BOX FRAME	2" x 6" x 10'-0"	5	
FLOOR	1" x 6" x 10'-0"	5	
ROOF RAFTERS	2" x 10" x 12'-0"	1	
NAILING STRIPS	1" x 6" x 12'-0"	2	
CORRUGATED ROOFING	1 SHEET - 2 1/2" CORRUGATED METAL 12' LONG		
RIDGE ROLL	6 FEET LONG		
HARDWARE	1 PIPE SLEEVE 7/8" x 3", WASHER, 1 STEEL ROD 7/16" x 4'-0", 5 STEEL STRAPS 1/2" x 2 1/2" x 12", 1 1/2" P.N., 24 3/8" CARRIAGE BOLTS, 4 1/2" BOLTS, 8 FT. GALVANIZED WELL CHAIN, 2 TOWING HOOKS, 4 1/2" x 3" LAG SCREWS, NAILS, SCREWS, AND PRESERVATIVE.		

NOTE:
FOR LONGEST SERVICE, ALL WOOD PARTS SHOULD BE TREATED WITH PRESERVATIVE AFTER CUTTING. SKIDS SHOULD BE PRESERVATIVE-TREATED OR OF DECAY RESISTANT WOOD SUCH AS LOCUST, REDWOOD, CYPRESS OR RED CEDAR.
CAPACITY ABOUT 10 BUSHELS.

COOPERATIVE EXTENSION WORK IN
AGRICULTURE AND HOME ECONOMICS
DEPARTMENT OF AGRICULTURAL ENGINEERING
UNIVERSITY OF MARYLAND
AND
UNITED STATES DEPARTMENT OF AGRICULTURE COOPERATING

SELF-FEEDER
FOR HOGS

S.C. '55 EX. 5814 SHEET 1 OF 1