

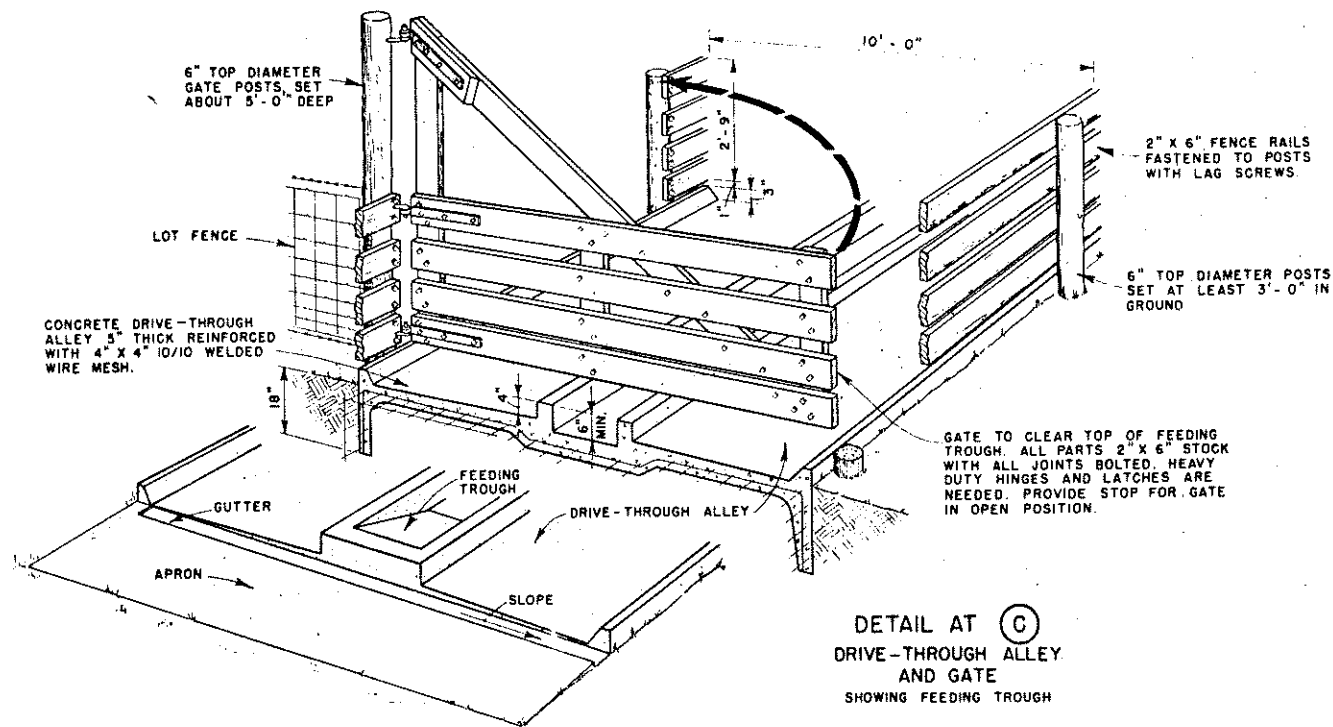
SUGGESTED ARRANGEMENT OF FACILITIES

(A) THE COLLECTION TRUCK IS BACKED UP THE RAMP AND UNLOADED INTO THE COOKING TRUCK ON AN EASILY CLEANED CONCRETE PLATFORM. IT IS THEN WASHED AND MADE READY FOR ANOTHER COLLECTION.

(B) THE COOKING TRUCK, FITTED WITH PIPES FOR STEAM INJECTION, IS MOVED TO THE COOKING SHED. HERE STEAM IS TURNED INTO THE LOAD UNTIL ALL OF THE GARBAGE HAS BEEN COOKED IN ACCORDANCE WITH REGULATIONS.

(C) AFTER THE LOAD HAS COOLED ENOUGH FOR SAFE HANDLING, THE COOKING TRUCK IS UNLOADED ON THE DRIVE-THROUGH ALLEY. RELEASE THE LOAD INTO THE TROUGH. OPEN THE GATES TO FORM FEEDING PENS. CLEAN THE TROUGH AND ALLEY AFTER EACH FEEDING.

(D) THE COOKING TRUCK IS MOVED BACK TO THE BOILER HOUSE WHERE IT IS WASHED AND LEFT UNTIL THE NEXT COLLECTION TRUCK ARRIVES ON THE RAMP.



DETAIL AT (C)
DRIVE-THROUGH ALLEY
AND GATE
SHOWING FEEDING TROUGH

NOTES

1. THIS PLAN IS INTENDED AS A GUIDE IN LAYING OUT A GARBAGE - FEEDING PREMISE.
2. THE COOKING SHED IS CLOSED TO CONSERVE FUEL AND REDUCE COOKING TIME.
3. THE ALLEY IS GIVEN A SLIGHT SLOPE AWAY FROM THE FEEDING TROUGH.
4. ALLEY SHOULD PROVIDE 8 TO 10 SQ. FT. FOR EACH 250LB. HOG. IN WARM AREAS, ALLOW 10 TO 12 SQ. FT.
5. FOR FEEDING PROVIDE APPROXIMATELY 15" OF TROUGH SPACE PER HOG.
6. POSTS AND PLANKS USED FOR RAMP, FENCES AND GATES SHOULD BE PRESSURE-TREATED WITH PRESERVATIVE FOR GREATER LIFE.
7. CONCRETE TO BE 1:2:2 1/4 MIX, USING ABOUT 4 GALLONS OF WATER PER SACK OF CEMENT. CURE BY COVERING OR FLOODING FOR AT LEAST 7 DAYS.
8. POUR ALLEY SLAB IN 15 FOOT SECTIONS WITH 1/2" EXPANSION JOINTS 30 FEET APART

COOPERATIVE EXTENSION WORK IN
AGRICULTURE AND HOME ECONOMICS
STATE OF FLORIDA
UNIVERSITY OF FLORIDA
AND
UNITED STATES DEPARTMENT OF AGRICULTURE COOPERATING

GARBAGE COOKING & FEEDING LAYOUT
FOR HOGS

USDA '56	EX. 5820	SHEET 1 OF 1
----------	----------	--------------

EXT. AGR. ENGINEER - GAINESVILLE, FLORIDA

SWINE