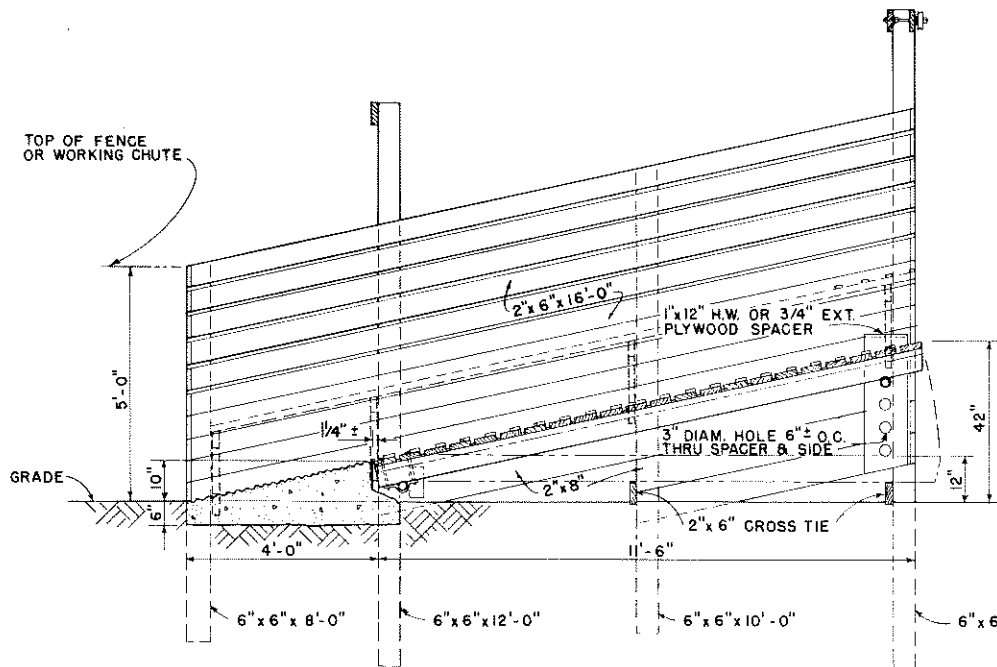
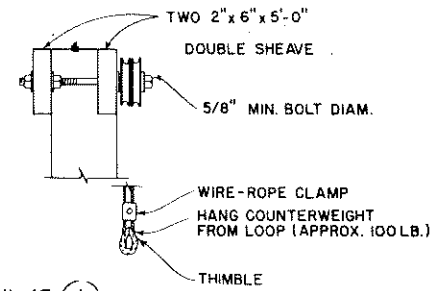
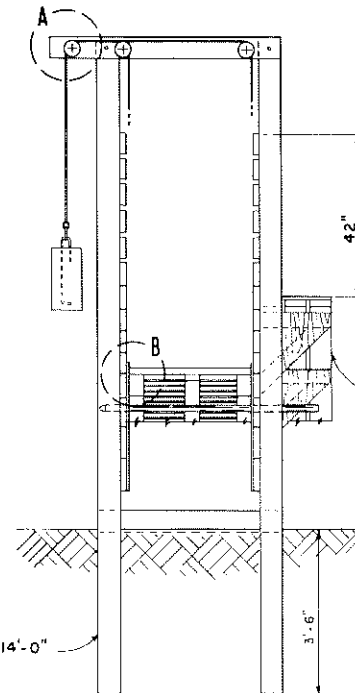


PLAN
(HINGED RAMP NOT SHOWN)

DETAIL AT A
SCALE: 1/2" = 1'-0"

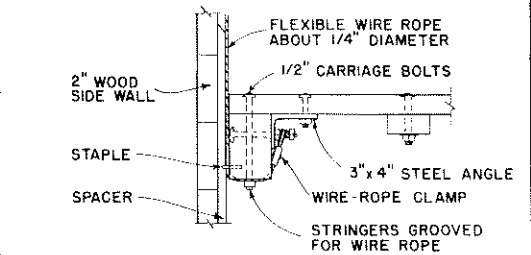


LONGITUDINAL SECTION



END ELEVATION

DETAIL AT B

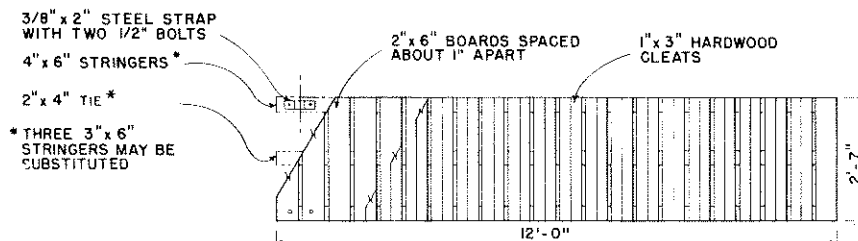


CLEATED WALK ON 2"x4" BRACKETS WITH 1/2" EXT. PLYWOOD GUSSETS NEXT TO POSTS

NOTE: ALL WOOD SHOULD BE PRESSURE-TREATED WITH PRESERVATIVE.

DIMENSIONS SHOWN ARE BASED ON THE USE OF DRESSED LUMBER.

SCALE: 1/2" = 1'-0", EXCEPT AS NOTED



PLAN OF HINGED RAMP

COOPERATIVE EXTENSION WORK IN AGRICULTURE AND HOME ECONOMICS NORTH DAKOTA NORTH DAKOTA STATE UNIVERSITY OF AGRICULTURE AND APPLIED SCIENCES AND UNITED STATES DEPARTMENT OF AGRICULTURE COOPERATING		
VARIABLE-HEIGHT LOADING CHUTE FOR CATTLE		
USDA '57	EX. 5852	SHEET 1 OF 1