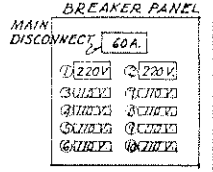
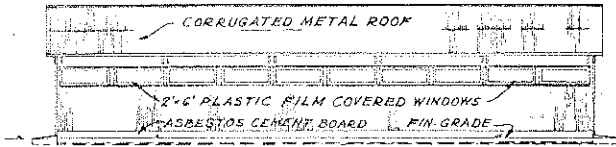
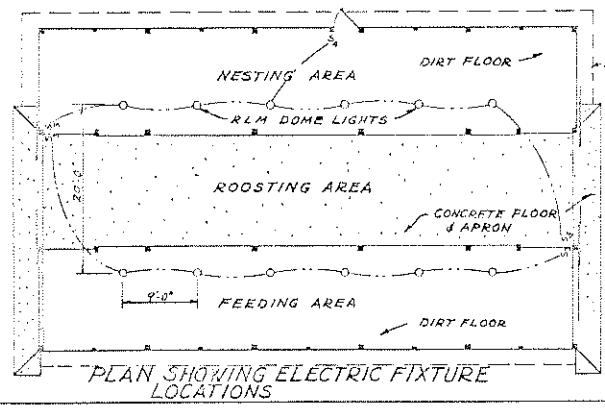


- ELECTRICAL DEMAND:**
- ① LIGHTING 15 WATTS PER SQUARE FOOT
2 CIRCUITS-20A. 110V.
 - ② CONVENIENCE OUTLETS
2 CIRCUITS-20A. 110V.
 - ③ FANS
1 CIRCUIT-20A. 110V.

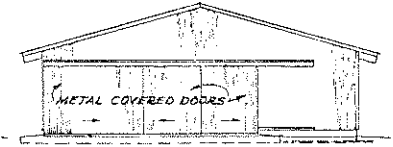
- POSSIBLE ADDITIONS:**
- ① EGG COOLER
1 CIRCUIT-20A. 220 V.
 - ② SPARES
 - ③ FEEDERS
1 CIRCUIT-20A. 110 V.
 - ④ EGG CLEANER
1 CIRCUIT-20A. 110V.



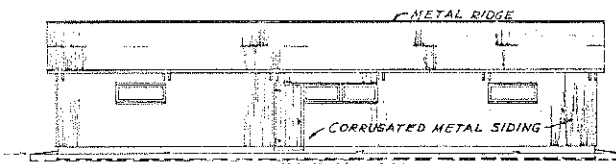
PLAN 0 2 4 6 FT.



SOUTH ELEVATION



EAST ELEVATION

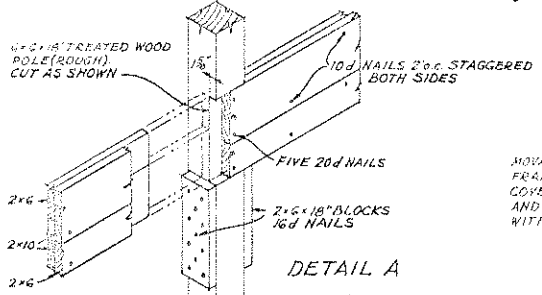
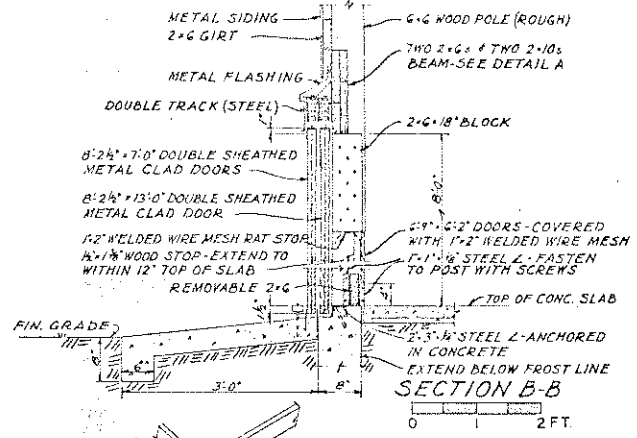
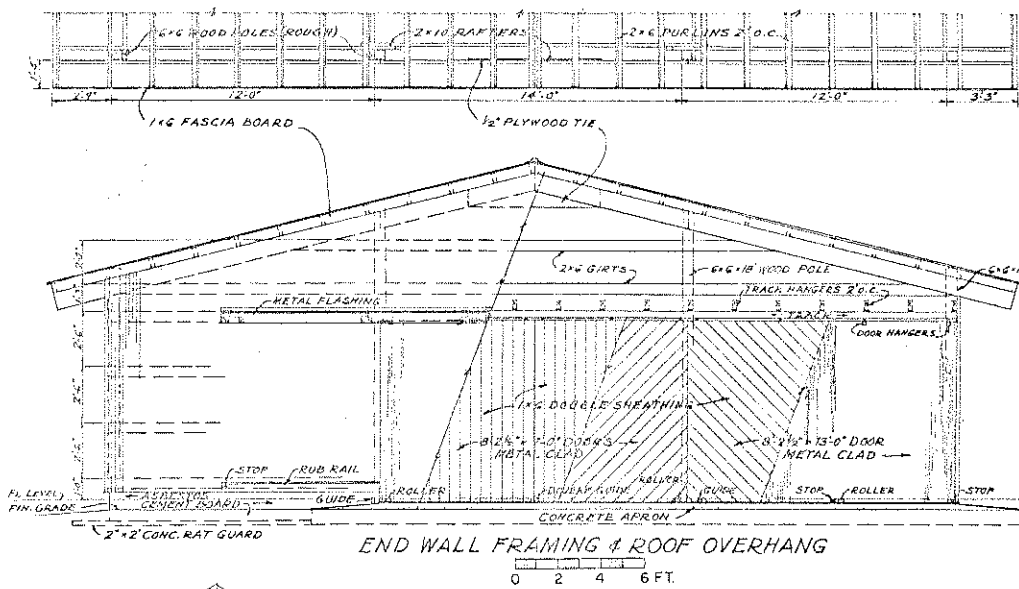


NORTH ELEVATION

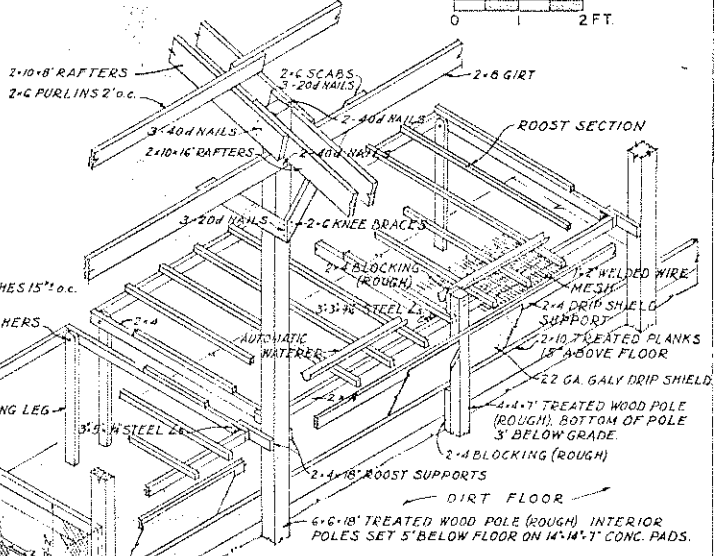
COOPERATIVE EXTENSION WORK IN AGRICULTURE AND HOME ECONOMICS
DEPARTMENT OF AGRICULTURAL ENGINEERING
UNIVERSITY OF MARYLAND
AND
UNITED STATES DEPARTMENT OF AGRICULTURE COOPERATING

POULTRY HOUSE

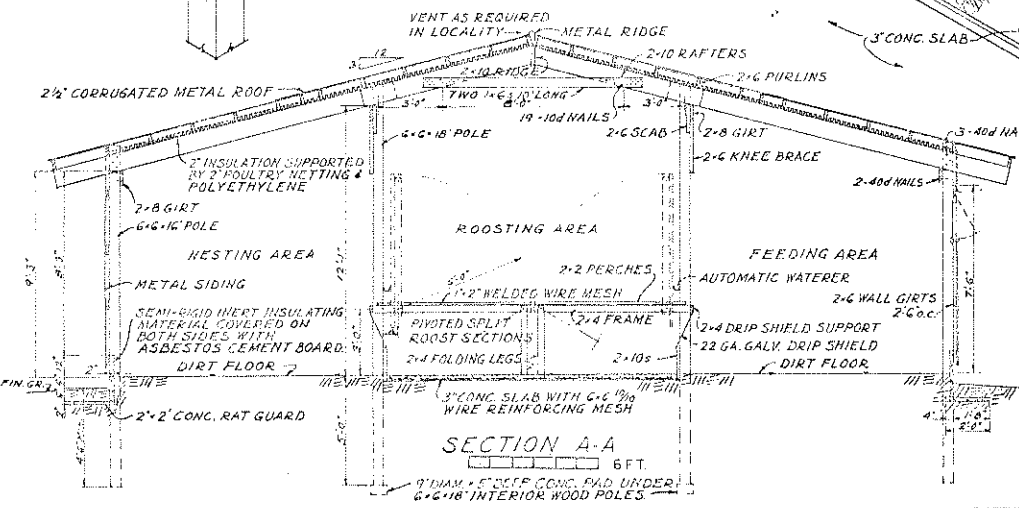
USDA-59 EX. 5871 SHEET 1 OF 2



MOVABLE SCREENED PANEL 2x4 FRAME (HALF LAPPED JOINTS) COVERED WITH 2\"/>



NOTE: THIS STRUCTURE IS PRIMARILY INTENDED FOR USE IN AREAS WHERE THE SNOW LOAD DOES NOT EXCEED 20 LBS. PER SQUARE FOOT AND WIND DOES NOT EXCEED 75 MILES PER HOUR. LENGTH OF THIS BUILDING MAY BE VARIED IN UNITS OF 13 FEET. ALL POLES AND OTHER WOOD IN CONTACT WITH THE GROUND OR DROPPINGS TO BE TREATED WITH A NON-TOXIC PRESERVATIVE. USE DRESSED LUMBER THRU-OUT EXCEPT WHERE OTHERWISE NOTED. EQUIP BUILDING WITH AN ADEQUATE LIGHTNING PROTECTION SYSTEM IN AREAS WHERE NEEDED. VENTILATION MUST BE ADDED AS REQUIRED TO SUIT LOCAL CONDITIONS.



COOPERATIVE EXTENSION WORK IN AGRICULTURE AND HOME ECONOMICS
 DEPARTMENT OF AGRICULTURAL ENGINEERING
 UNIVERSITY OF MARYLAND
 AND
 UNITED STATES DEPARTMENT OF AGRICULTURE COOPERATING

POULTRY HOUSE

USDA-591 EX. 5871 SHEET 2 OF 2