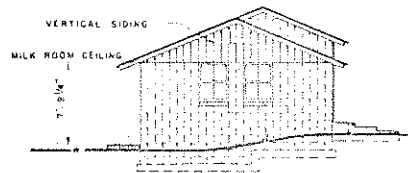
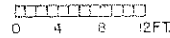


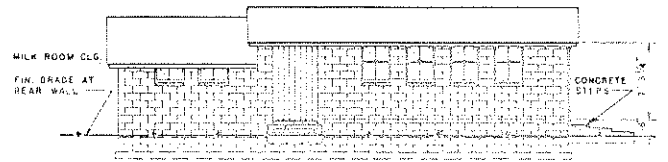
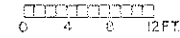
CUT-AWAY PERSPECTIVE



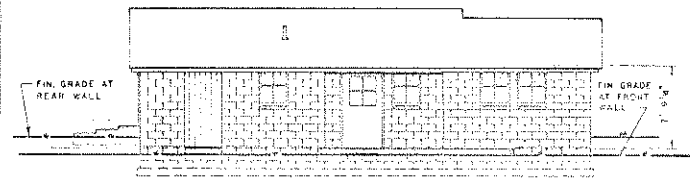
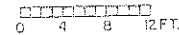
RIGHT END ELEVATION



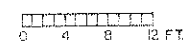
LEFT END ELEVATION



REAR ELEVATION

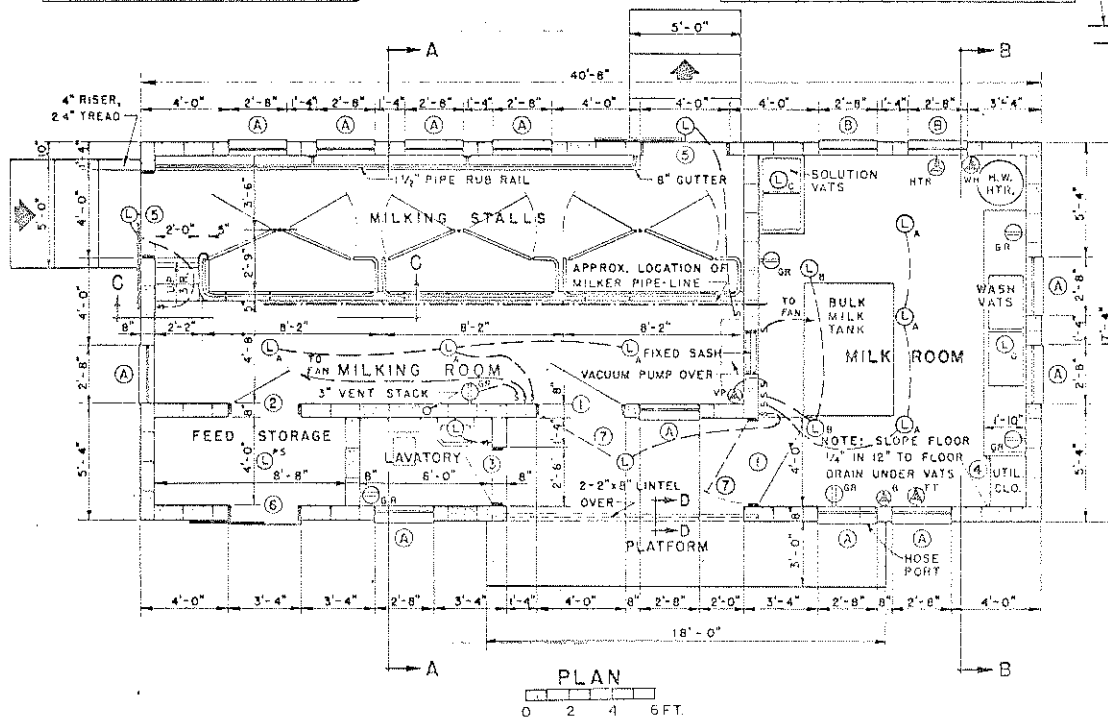


FRONT ELEVATION

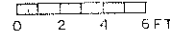


WINDOW SCHEDULE				
NO.	WIDTH	HEIGHT	REMARKS	REQ.
A	2'-8"	3'-6"	STEEL UTILITY SASH	11
B	2'-8"	1'-10"	STEEL BASEMENT SASH	2

DOOR SCHEDULE					
NO.	WIDTH	HEIGHT	THK.	REMARKS	REQ.
1	3'-8"	6'-8"	1 1/2"	FLUSH WOOD, GLAZED	2
2	3'-0"	6'-8"	1 1/2"	FLUSH WOOD DOOR	1
3	2'-4"	6'-8"	1 1/2"	FLUSH WOOD DOOR	1
4	2'-0"	7'-0"	3/4"	PLYWOOD DOOR	1
5	4'-0"	7'-0"		T & G BATTEN DOOR	2
6	3'-4"	7'-0"		T & G BATTEN DOOR	1
7	3'-8"	6'-8"	1 1/2"	SCREEN DOOR	2



PLAN



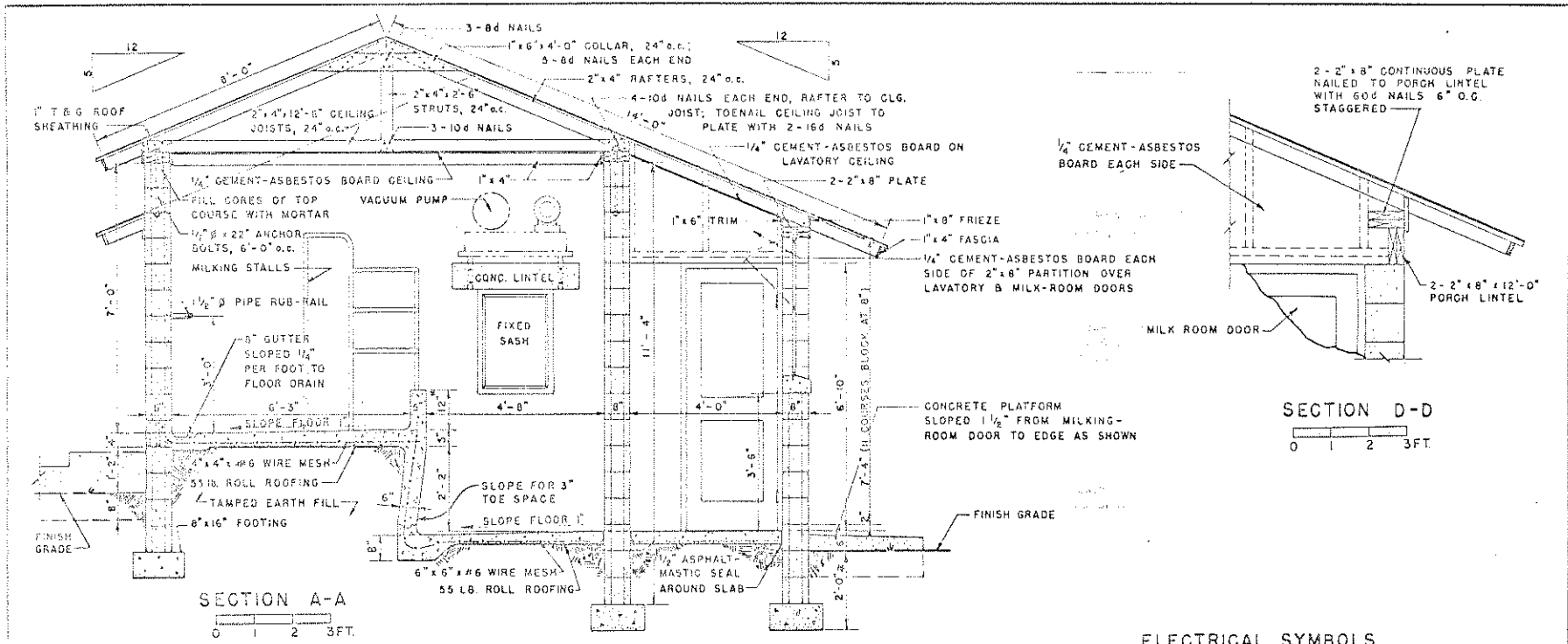
GENERAL NOTES

1. CONSULT LOCAL HEALTH AUTHORITIES BEFORE STARTING CONSTRUCTION TO BE SURE THAT PLAN CONFORMS WITH LOCAL REGULATIONS.
2. VARIABLE DIMENSIONS MARKED WITH W. CARRY FOUNDATION TO SOLID GROUND BELOW FROST.
3. PRECAST CONCRETE LINTELS OVER OPENINGS HAVING MASONRY ABOVE, LINTELS TO HAVE 8" BEARING ON EACH END. REINFORCE LINTELS WITH 2-3/8" RODS 4" APART AND 1 1/2" FROM BOTTOM.
4. FILL BLOCK CORES UNDER ENDS OF LINTELS WITH GEMENT MORTAR.
5. CONCRETE FLOORS USED BY CATTLE TO HAVE BROOMED (ROUGH) FINISH.
6. PAINT EXTERIOR SURFACE OF BLOCK WALL WITH 2 COATS OF CEMENT PAINT ABOVE FINISH GRADE, PARGE WITH 1/2" CEMENT-MORTAR BELOW FIN. GRADE.
7. DRAINS TO MEET LOCAL CONDITIONS.

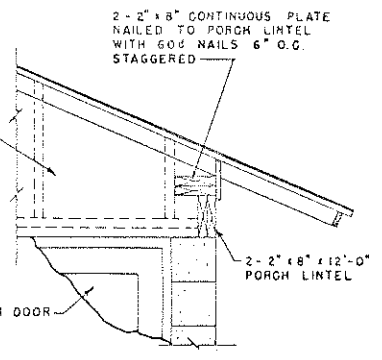
COOPERATIVE EXTENSION WORK IN  
 AGRICULTURE AND HOME ECONOMICS  
 DEPARTMENT OF AGRICULTURAL ENGINEERING  
 UNIVERSITY OF MARYLAND  
 AND  
 UNITED STATES DEPARTMENT OF AGRICULTURE COOPERATING

**3-STALL MILKING PLANT**

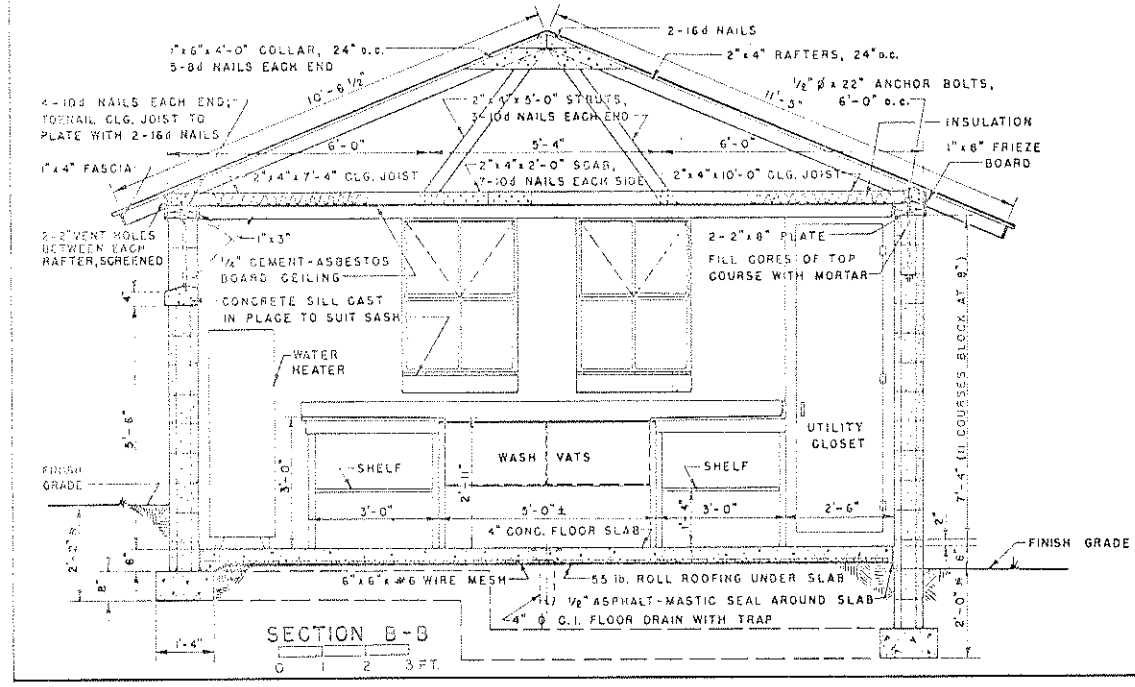
USDA '60 EX. 5875 SHEET 1 OF 2



SECTION A-A  
0 1 2 3 FT.



SECTION D-D  
0 1 2 3 FT.



SECTION B-B  
0 1 2 3 FT.

ELECTRICAL SYMBOLS

- S SWITCH
- ⊖<sub>PS</sub> PULL SWITCH
- ⊖ LAMP
- ⊖<sub>A</sub> 40 WATT FLUORESCENT STRIP FIXTURE
- ⊖<sub>B</sub> SPOTLIGHTS TO ILLUMINATE BULK MILK TANK OPENINGS  
NO FIXTURES TO BE MOUNTED DIRECTLY ABOVE  
OPENINGS OF BULK TANK
- ⊖<sub>C</sub> 250 WATT INFARED LAMPS
- ⊖<sub>GR</sub> DOUBLE CONVENIENCE OUTLET GROUNDED
- ⊖<sub>VP</sub> MILKER VACUUM PUMP 230 VOLT, 3P, 5N FUSED SWITCH
- ⊖<sub>B</sub> BULK MILK TANK 230 VOLT, 3P, 5N FUSED SWITCH
- ⊖<sub>TT</sub> TANK TRUCK 230 VOLT
- ⊖<sub>WH</sub> WATER HEATER 230 VOLT, 3P, 5N FUSED SWITCH
- ⊖<sub>HT</sub> HEATER

NOTE:  
W VARIABLE DIMENSIONS

COOPERATIVE EXTENSION WORK IN  
AGRICULTURE AND HOME ECONOMICS  
DEPARTMENT OF AGRICULTURAL ENGINEERING  
UNIVERSITY OF MARYLAND  
AND  
UNITED STATES DEPARTMENT OF AGRICULTURE COOPERATING

**3-STALL MILKING PLANT**

USDA '60	EX. 5875	SHEET 2 OF 2
----------	----------	--------------