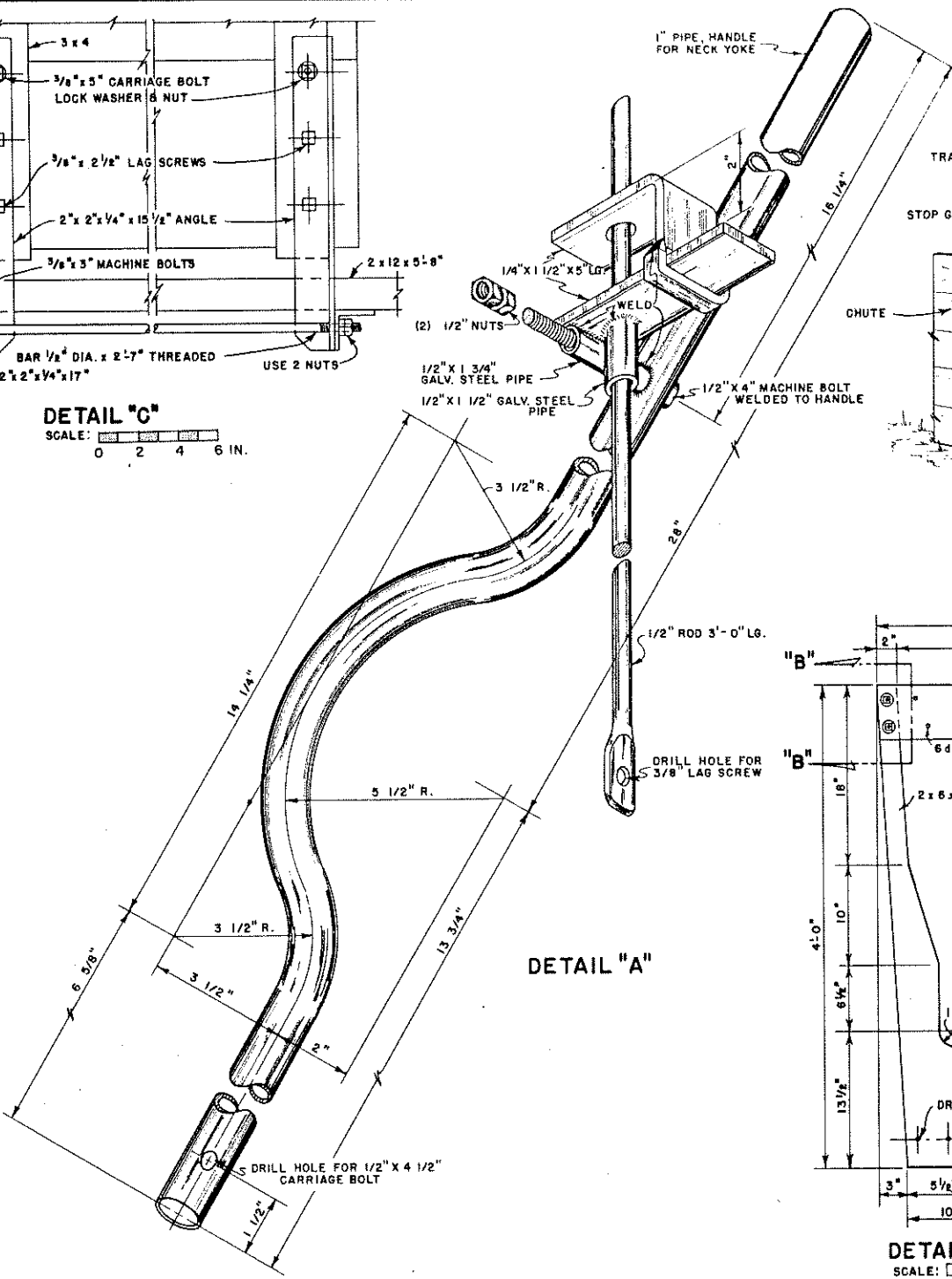
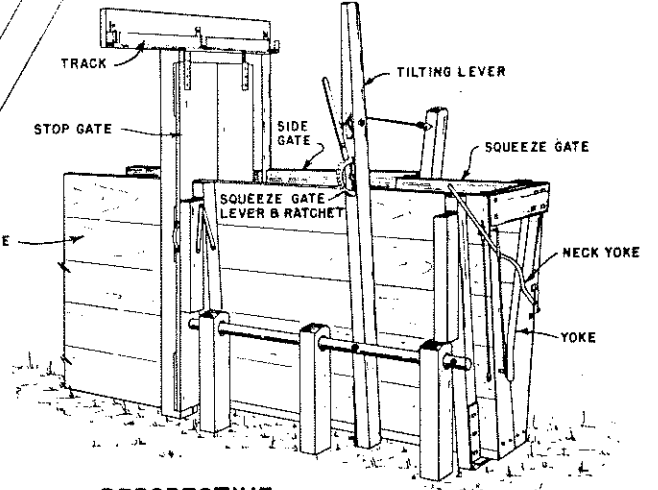


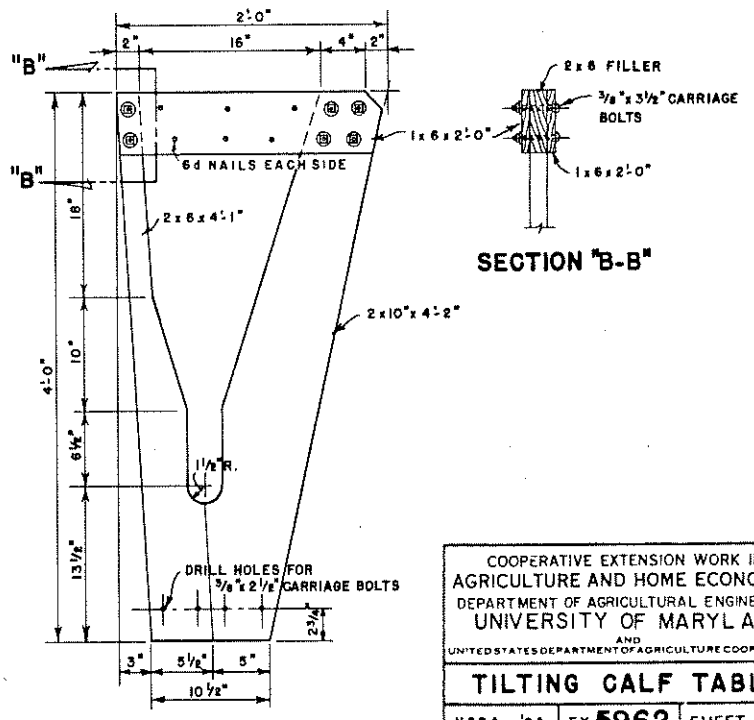
**DETAIL "C"**  
SCALE: 0 2 4 6 IN.



**DETAIL "A"**



**PERSPECTIVE**



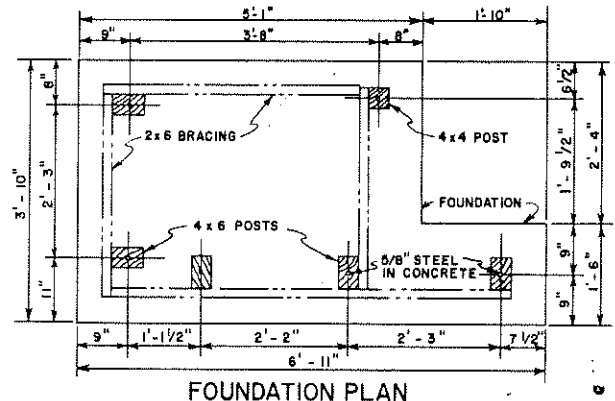
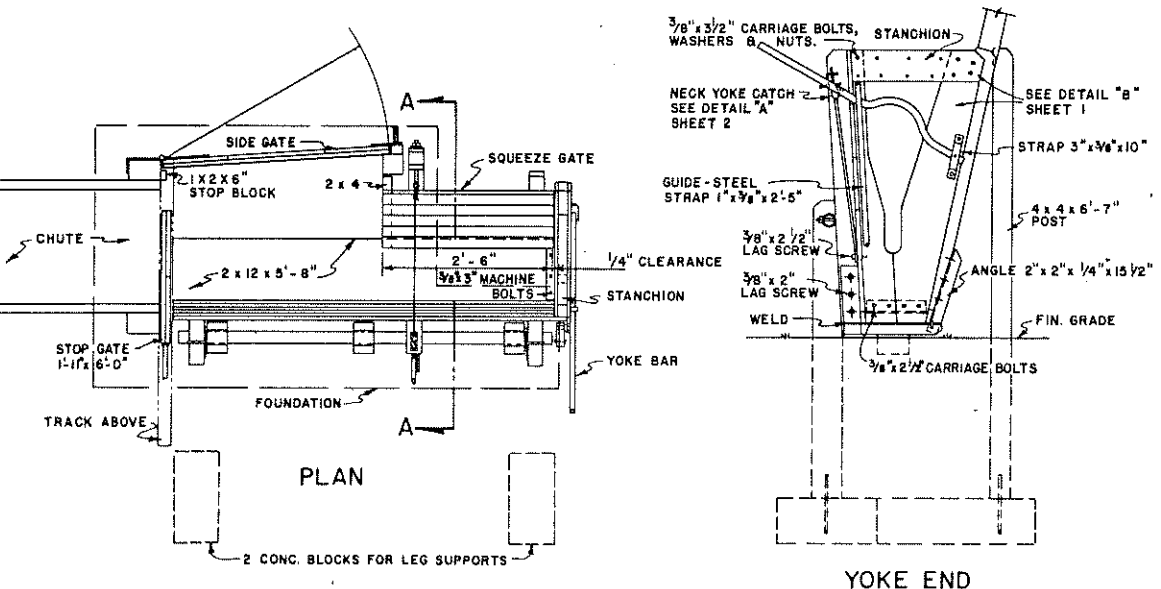
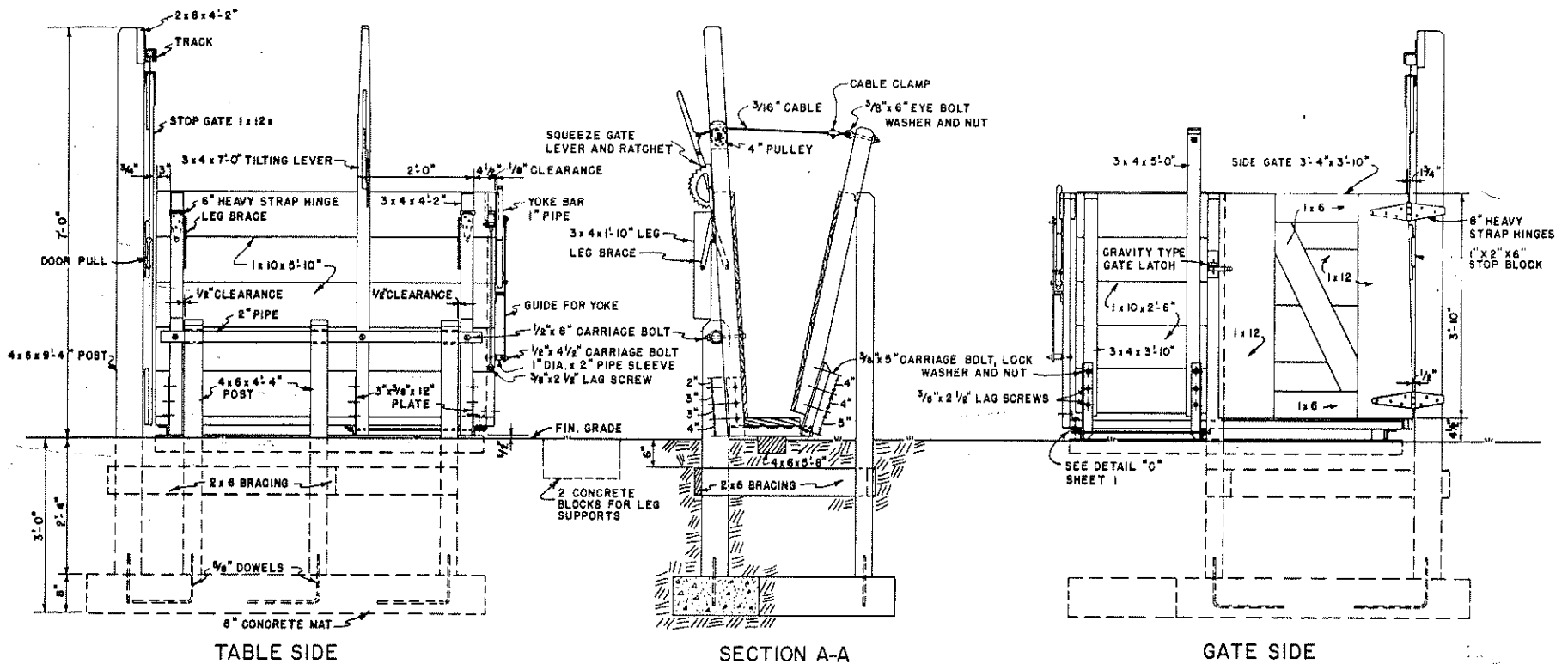
**SECTION "B-B"**

**DETAIL "B"**  
SCALE: 0 1 FT.

COOPERATIVE EXTENSION WORK IN  
AGRICULTURE AND HOME ECONOMICS  
DEPARTMENT OF AGRICULTURAL ENGINEERING  
UNIVERSITY OF MARYLAND  
AND  
UNITED STATES DEPARTMENT OF AGRICULTURE COOPERATING

**TILTING CALF TABLE**

USDA '64 EX. 5962 SHEET 1 OF 2



NOTE: SCALE 1" = 2 FT. THRU-OUT UNLESS OTHERWISE NOTED.

ALL WOOD IN CONTACT WITH THE GROUND SHOULD BE PRESURE-TREATED WITH PRESERVATIVE (AFTER CUTTING) TO 8 LBS. PER CU. FT. RETENTION.

BASED ON MONT. PLAN C-201

COOPERATIVE EXTENSION WORK IN AGRICULTURE AND HOME ECONOMICS  
DEPARTMENT OF AGRICULTURAL ENGINEERING  
UNIVERSITY OF MARYLAND  
AND  
UNITED STATES DEPARTMENT OF AGRICULTURE COOPERATING

**TILTING CALF TABLE**

USDA '64 EX. 5962 SHEET 2 OF 2