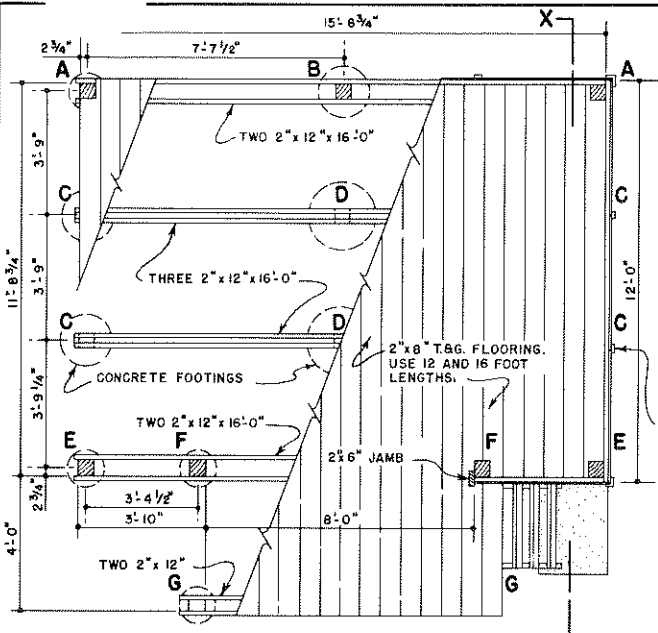


MD 1021
1341



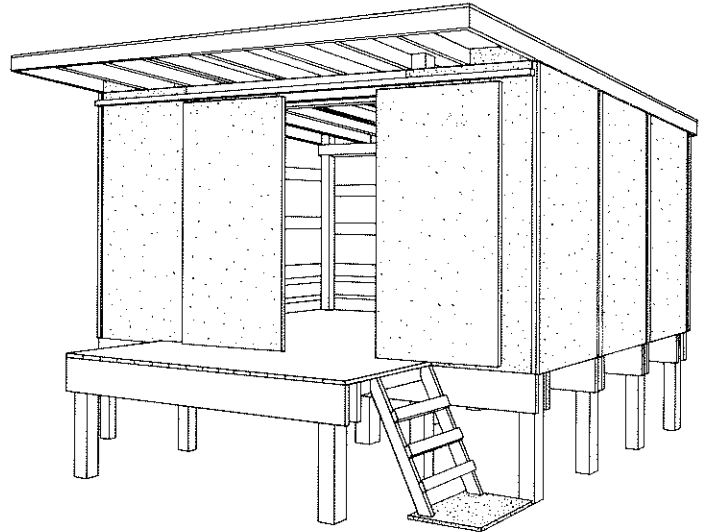
PLAN
CUT AWAY TO SHOW FLOOR FRAMING

MINIMUM SIZES OF CONCRETE FOOTINGS,
AND FLOOR BEAM TO POST CONNECTIONS
REQUIRED WHERE INDICATED ON PLAN.

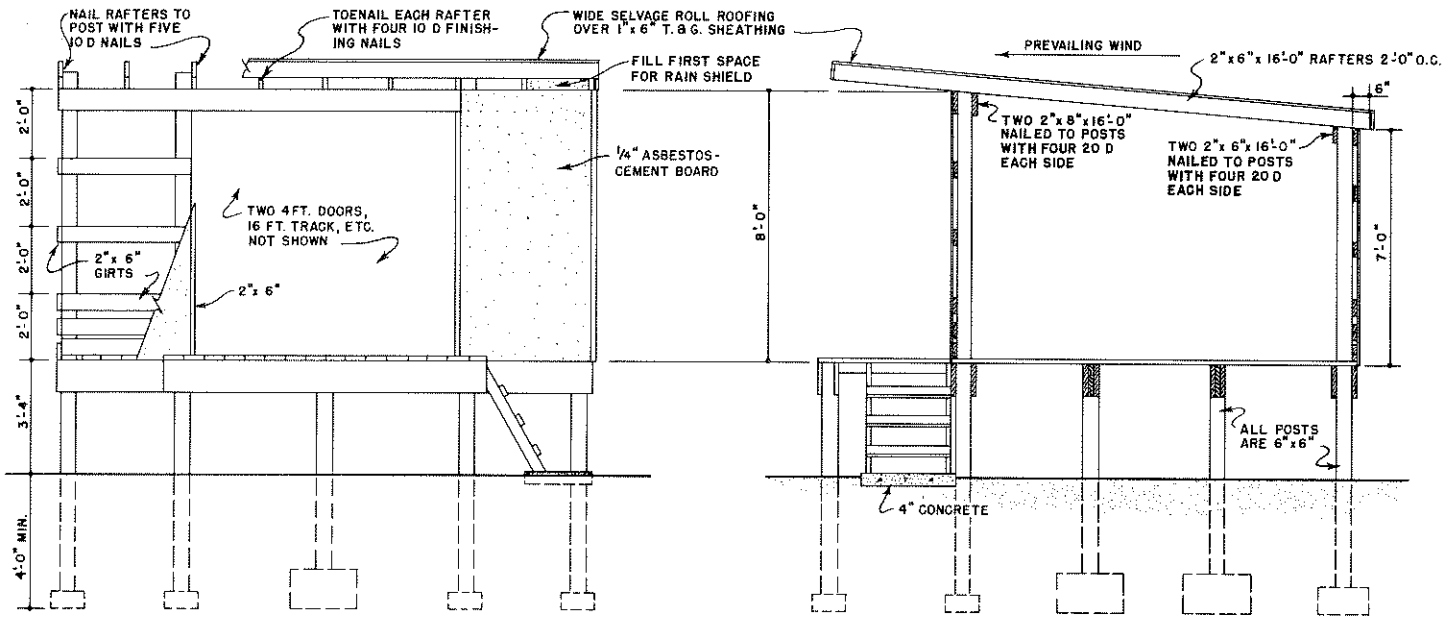
POST	DIAM.	DEPTH	BOLTS	CONNECTORS
A	12"	6"	TWO	FOUR
B	18"	10"	THREE	SIX
C	18"	10"	THREE	SIX
D	24"	14"	THREE	SIX
E	10"	6"	ONE	TWO
F	12"	6"	TWO	FOUR
G	10"	6"	TWO	FOUR

CONNECTORS ARE 2 5/8" DIAM. TOOTHED RINGS.
THE 3/8" DIAM. MACHINE BOLTS, LARGE
PLATE WASHERS AND ALL NAILS SHALL
BE HOT-DIP GALVANIZED OR OTHERWISE
TREATED TO BE CORROSION RESISTANT.

1" x 3" BATTENS NAILED OVER A BEAD
OF CALKING COMPOUND AT ALL PANEL
JOINTS AND AT CORNERS OF SHED.



PERSPECTIVE



FRONT ELEVATION
CUT AWAY TO SHOW FRAMING

SECTION X-X

POSTS, FLOOR BEAMS AND FLOORING
SHOULD BE PRESSURE-TREATED
WITH AN OIL BASE PRESERVATIVE TO
A RETENTION OF 8 LBS. PER CUBIC FOOT.

DESIGN ASSUMPTIONS:
DRESSED LUMBER WITH ALLOWABLE
FIBER STRESS OF 1,400 P.S.I.
SNOW LOAD NOT TO EXCEED 25 LBS.
PER SQUARE FOOT.
SOIL BEARING CAPACITY OF 4,000
LBS. PER SQUARE FOOT.
MAXIMUM FLOOR LOAD, UNIFORMLY
DISTRIBUTED, 40 TONS.

COOPERATIVE EXTENSION WORK IN
AGRICULTURE AND HOME ECONOMICS
DEPARTMENT OF AGRICULTURAL ENGINEERING
UNIVERSITY OF MARYLAND
AND
UNITED STATES DEPARTMENT OF AGRICULTURE COOPERATING

STORAGE SHED FOR FERTILIZER
40 TON CAPACITY

ALA. '63 EX. 5966 SHEET 1 OF 1