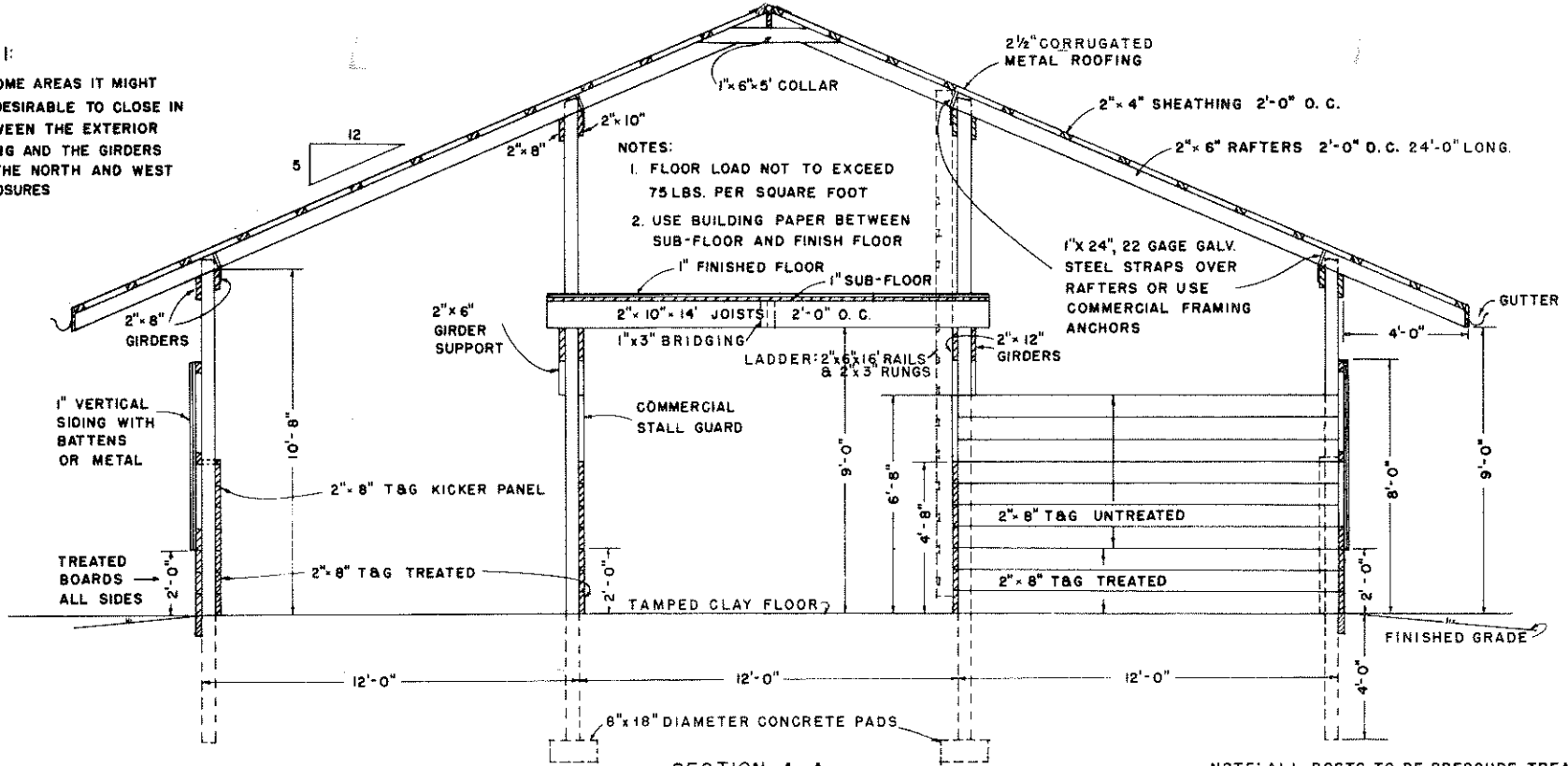


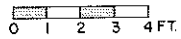
NOTE 1:

IN SOME AREAS IT MIGHT BE DESIRABLE TO CLOSE IN BETWEEN THE EXTERIOR SIDING AND THE GIRDERS ON THE NORTH AND WEST EXPOSURES

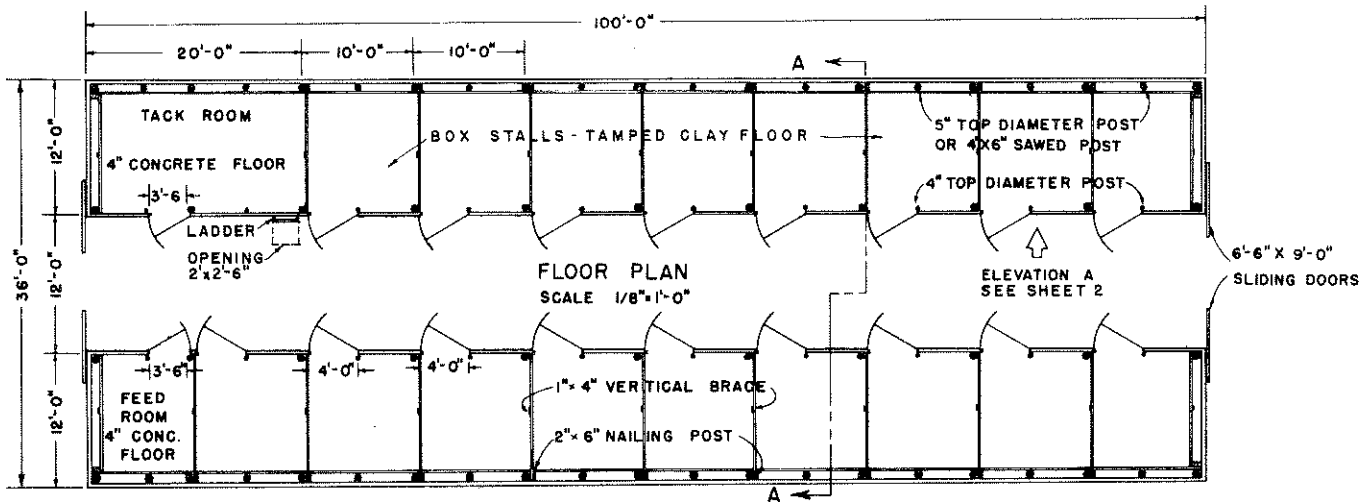


- NOTES:**
1. FLOOR LOAD NOT TO EXCEED 75 LBS. PER SQUARE FOOT
 2. USE BUILDING PAPER BETWEEN SUB-FLOOR AND FINISH FLOOR

SECTION A-A



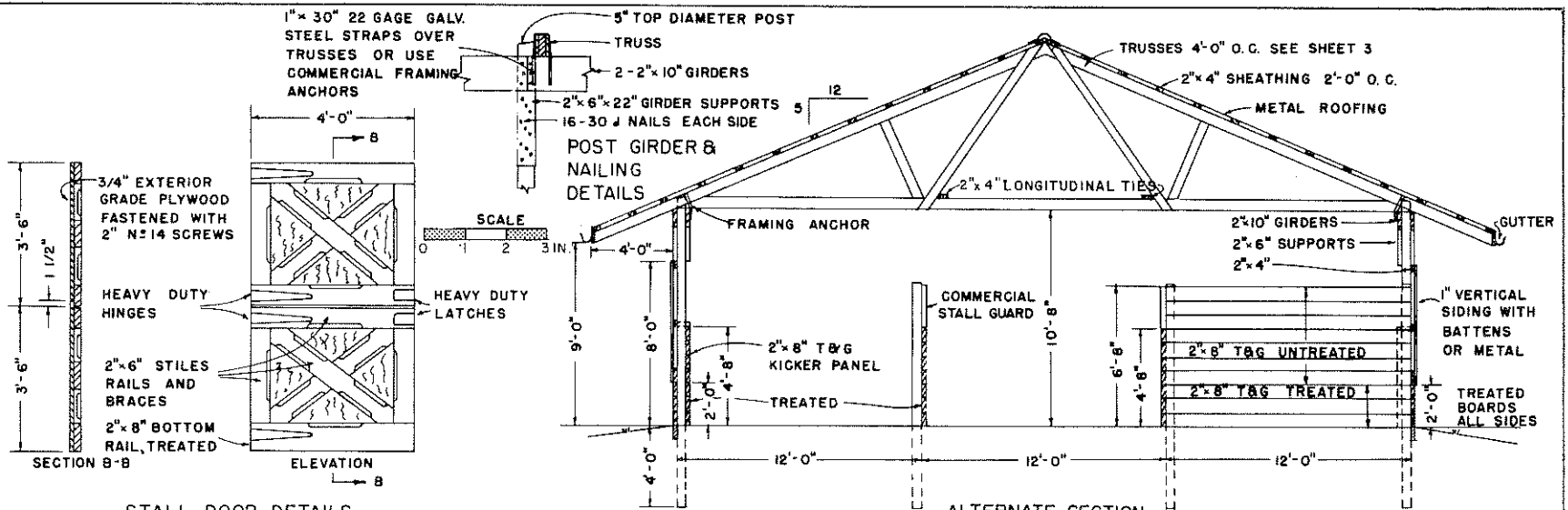
NOTE: ALL POSTS TO BE PRESSURE-TREATED WITH PRESERVATIVE TO A RETENTION OF 8 POUNDS PER CUBIC FOOT.



COOPERATIVE EXTENSION WORK IN
AGRICULTURE AND HOME ECONOMICS
 DEPARTMENT OF AGRICULTURAL ENGINEERING
UNIVERSITY OF MARYLAND
 AND
 UNITED STATES DEPARTMENT OF AGRICULTURE COOPERATING

HORSE BARN-17 STALL

VA. '67 EX. 6011 SHEET 1 OF 3

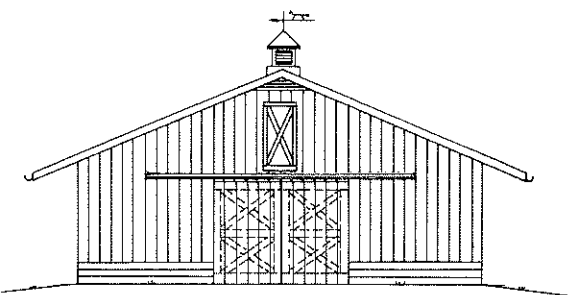


STALL DOOR DETAILS

0 1 2 3 FT.

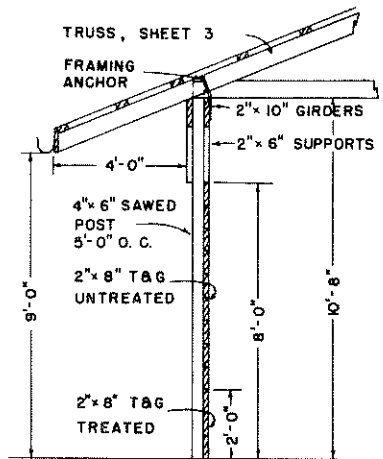
ALTERNATE SECTION A - A

0 2 4 6 FT.



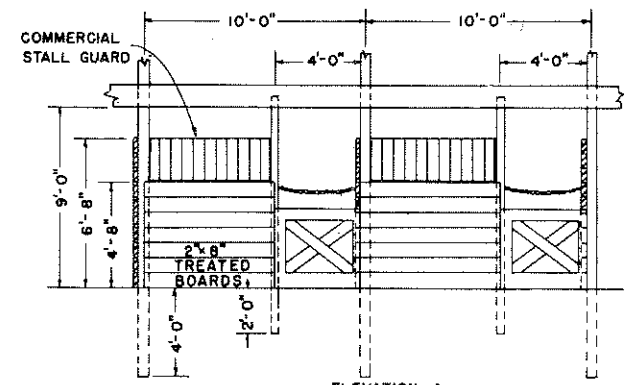
END ELEVATION

0 4 8 12 FT.



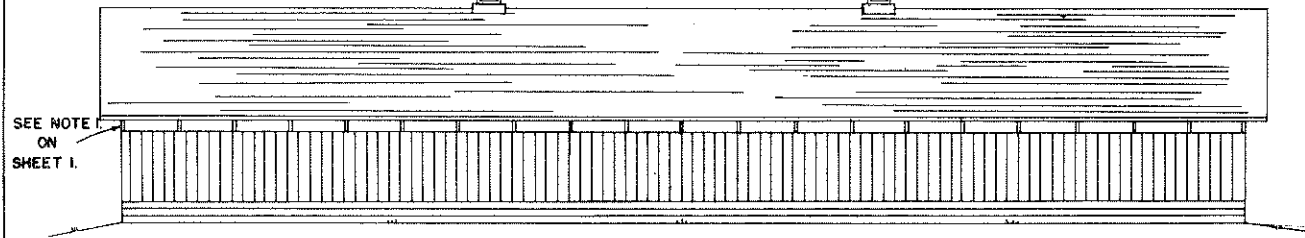
ALTERNATE WALL DETAIL

0 1 2 3 4 FT.



ELEVATION A STALL DETAIL

0 2 4 6 FT.



SIDE ELEVATION

0 4 8 12 FT.

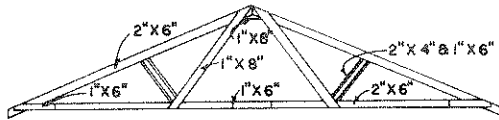
SEE NOTE ON SHEET 1.

COOPERATIVE EXTENSION WORK IN
 AGRICULTURE AND HOME ECONOMICS
 DEPARTMENT OF AGRICULTURAL ENGINEERING
 UNIVERSITY OF MARYLAND
 AND
 UNITED STATES DEPARTMENT OF AGRICULTURE COOPERATING

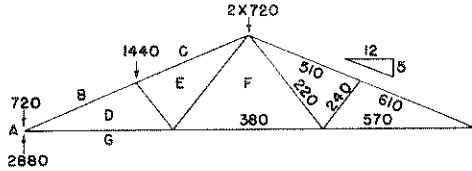
HORSE BARN-17STALL

VA. '67 EX. 6011 SHEET 2 OF 3

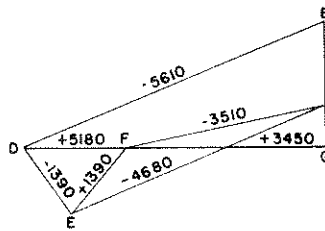
36-FT SPAN, 5 IN 12 PITCH, NAILED TRUSSED RAFTER (NO CEILING) SPACED 4FT. ON CENTER



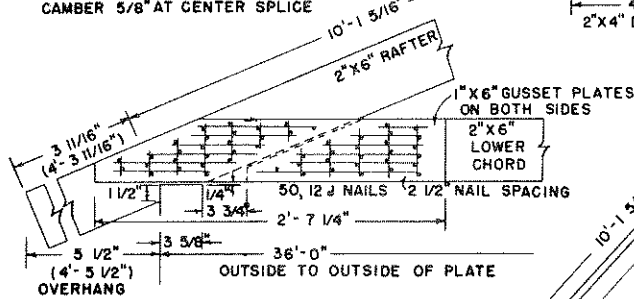
VIEW OF FRONT OF ASSEMBLY



LOAD AND STRESS DIAGRAMS



DEAD LOAD & LIVE LOAD ON ROOF: 40 LB/SQ. FT.
 TRUSSED RAFTERS SPACED 4'-0" O.C.
 LUMBER #1 SOUTHERN PINE OR DOUGLAS FIR
 C=135 PSI COMPRESSION PARALLEL TO GRAIN
 F=1500 PSI MODULUS OF RUPTURE
 E=1760000 PSI MODULUS OF ELASTICITY
 CAMBER 5/8" AT CENTER SPLICE



HEEL JOINT
WITH 50, 12d NAILS

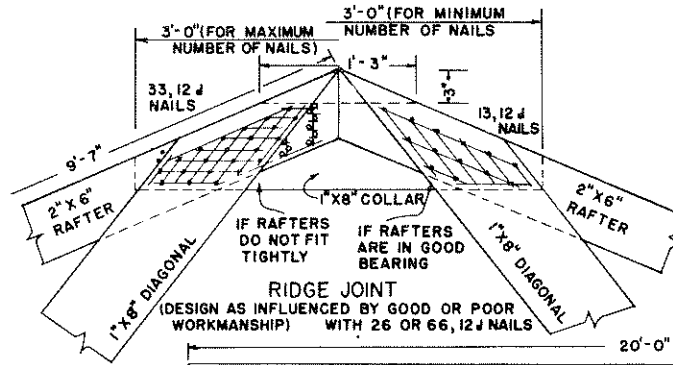
NOTES:

USE HELICALLY THREADED NAILS FOR PERMANENTLY TIGHT JOINTS THROUGHOUT STRUCTURE

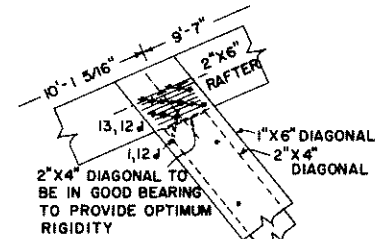
USE HARDENED NAILS IN DRY SOUTHERN PINE

DRIVE ALL NAILS FROM FRONT EXCEPT THOSE SHOWN AS (O)

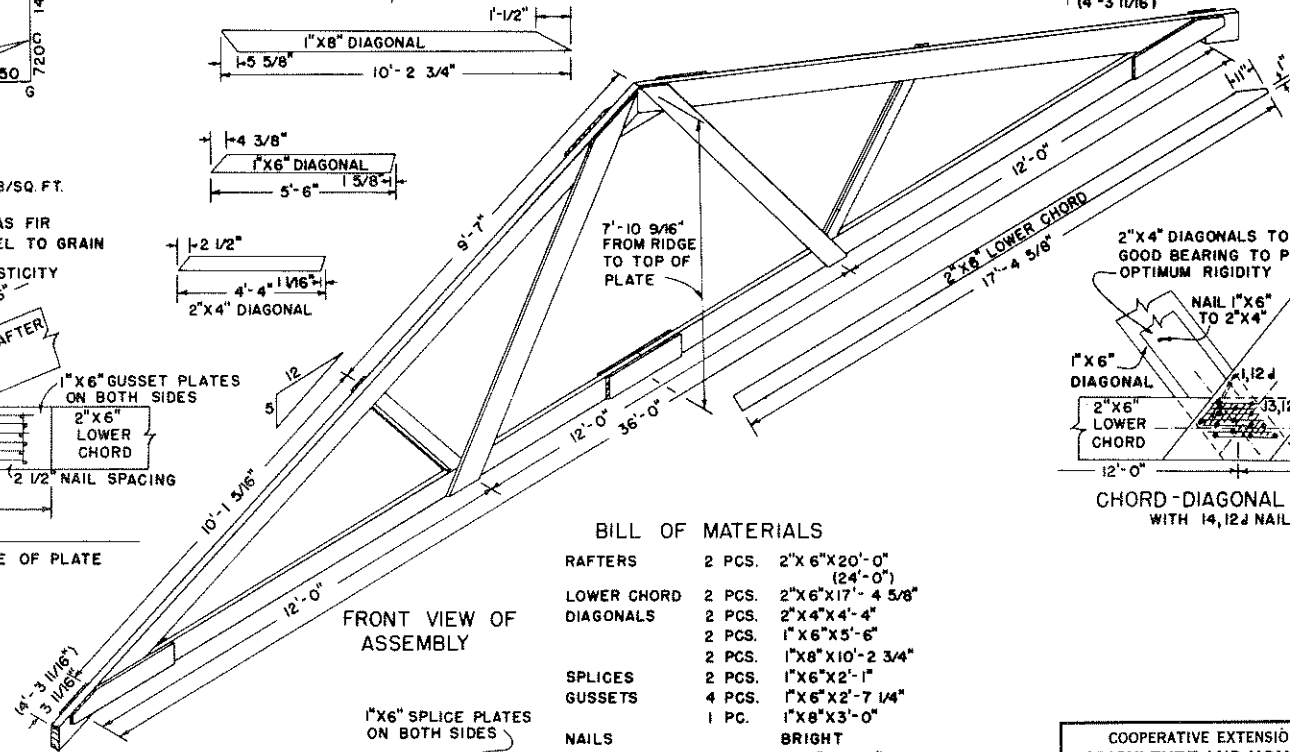
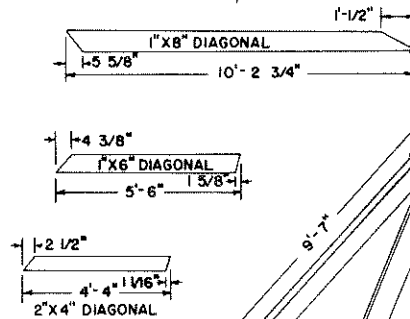
USE TEMPLATES FOR LOCATING ALL NAILS TO ASSURE MAXIMUM EFFICIENCY AND EFFECTIVENESS



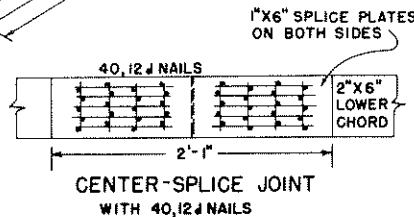
RIDGE JOINT
(DESIGN AS INFLUENCED BY GOOD OR POOR WORKMANSHIP) WITH 26 OR 66, 12d NAILS



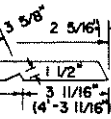
RAFTER-DIAGONAL JOINT
WITH 14, 12d NAILS



FRONT VIEW OF ASSEMBLY



CENTER-SPLICE JOINT
WITH 40, 12d NAILS



CHORD-DIAGONAL JOINT
WITH 14, 12d NAILS

BILL OF MATERIALS

RAFTERS	2 PCS.	2" x 6" x 20'-0" (24'-0")
LOWER CHORD	2 PCS.	2" x 6" x 17'-4 5/8"
DIAGONALS	2 PCS.	2" x 4" x 4'-4"
	2 PCS.	1" x 6" x 5'-6"
	2 PCS.	1" x 8" x 10'-2 3/4"
SPLICES	2 PCS.	1" x 6" x 2'-1"
GUSSETS	4 PCS.	1" x 6" x 2'-7 1/4"
	1 PC.	1" x 8" x 3'-0"
NAILS	BRIGHT	
230-270 PCS.	12d	3 1/4" x 0.148" (44 LBS.)
	OR	
NAILS	HARDENED	
230-270 PCS.	12d	3 1/4" x 0.135" (37 LBS.)

COOPERATIVE EXTENSION WORK IN
AGRICULTURE AND HOME ECONOMICS
 DEPARTMENT OF AGRICULTURAL ENGINEERING
 UNIVERSITY OF MARYLAND
 AND
 UNITED STATES DEPARTMENT OF AGRICULTURE COOPERATING

HORSE BARN-17 STALL

VA. '67 EX. 6011 SHEET 3 OF 3