

CROSS SECTION

CONCRETE PAVING

1. REMOVE ALL TOPSOIL AND ORGANIC MATERIAL PRIOR TO PLACEMENT OF GRAVEL FILL.
2. USE AIR-ENTRAINED CONCRETE TO REDUCE SCALING AND FROST ACTION ON THE SURFACE.

BILL OF MATERIALS  
10'-0" LONG BUNK

ITEM	DESCRIPTION	AMOUNT
CONCRETE	BUNK-SIDES, BOTTOM	1.4 CU. YDS
CONCRETE PAVING	12" WIDE-BOTH SIDES	3.75 CU. YDS
PLANK	2x10x10'-0"	2
ANGLES	1/2"x1/2"x2'-0"	4
REINFORCING	#3 # ROD	40 FEET
	#2 # ROD	33 FEET
BOLTS	CARRIAGE 1/2"x3"	8

REINFORCED CONCRETE BUNK SCALE



IF 8" CONCRETE BLOCKS ARE USED FOR BUNK SIDES, FILL CORES WITH MORTAR

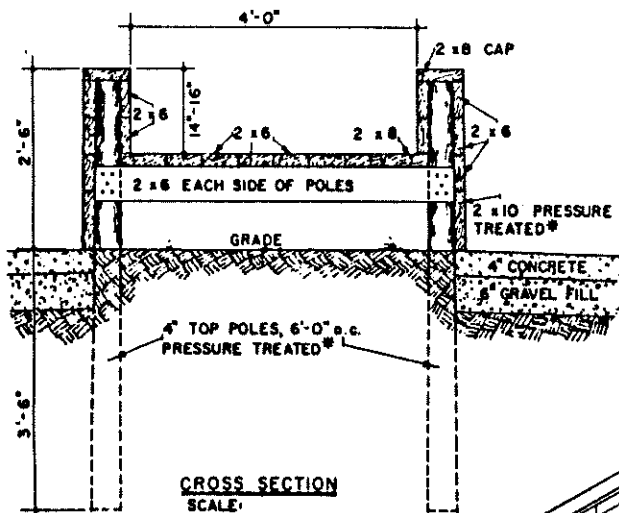
PROVIDE PERIODIC DRAIN HOLES AT BASE OF BUNK & PITCH FLOOR TO DRAIN 1/4" PER FOOT MIN.

1 1/2"x45° CHAMFER

COMPACTED GRAVEL FILL  
6" MINIMUM DEPTH

CONCRETE BUNK

NOTE  
ESTIMATE 1/2 CU. YD. OF CONCRETE PER FOOT OF BUNK WITH 12" OF PAVING EACH SIDE



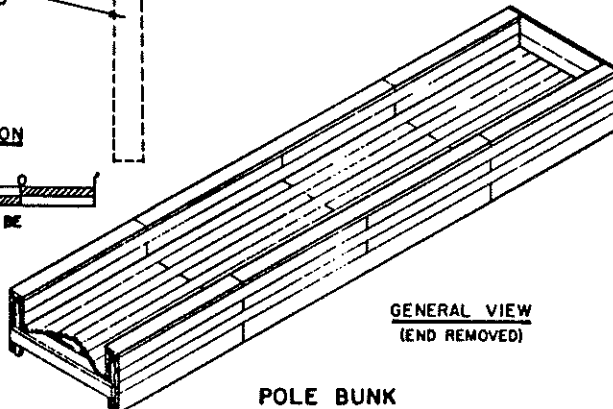
CROSS SECTION  
SCALE

BILL OF MATERIALS  
60'-0" LONG BUNK

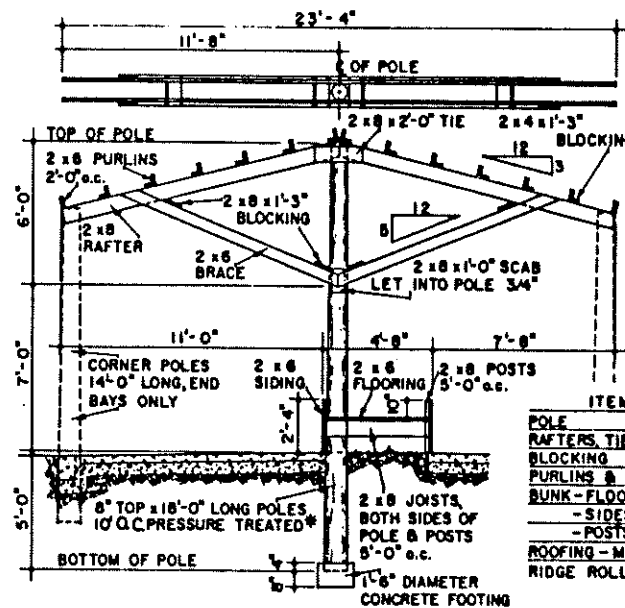
ITEM	SIZE	PCS.
POLES	4" TOP x 6'-0" LONG	22
JOISTS	2x6x5'-0"	22
FLOORING	2x6x12'-0"	30
	2x8x12'-0"	10
SIDES	2x6x12'-0"	50
	2x10x12'-0"	10
CAP	2x8x12'-0"	10
ENDS	2x6x5'-4"	4
	2x8x5'-4"	2
	2x10x5'-4"	2

\* PRESSURE TREATED MATERIAL SHALL BE CONSTRUCTION GRADE DOUGLAS FIR OR EQUAL & SHALL BE PRESSURE TREATED TO A PRESERVATIVE RETENTION OF 5-7 LBS PER CUBIC FOOT AS PER A.W.P.A. STANDARDS

CAUTION:  
SOME PRESSURE TREATED POSTS & LUMBER USE PRESERVATIVES THAT EPA DOES NOT ALLOW IN CONTACT WITH FEED. IN SUCH CASES PLYWOOD OR PLASTIC SHOULD BE USED AS A LINER. CHECK SUPPLIER OR LABELS FOR GUIDANCE.



POLE BUNK



CROSS SECTION  
SCALE

UMBRELLA BUNK

NOTE:  
BUILD RAFTER-BRACE FRAME AS A UNIT BEFORE FASTENING TO POLES. BUILD ROOF PANELS AS A 12'x10' UNIT.

BILL OF MATERIALS  
10'-0" LONG BUNK

ITEM	SIZE	PCS.
POLE	6" TOP x 18'-0" LONG	1
RAFTERS, TIES, SCABS	2x6x12'-0"	9
BLOCKING	2x4x16'-0"	1
PURLINS & BRACES	2x6x10'-0"	18
BUNK-FLOOR	2x6x10'-0"	7
-SIDES	2x6x10'-0"	10
-POSTS & JOISTS	2x8x14'-0"	2
ROOFING-METAL	240 SQ. FT.	
RIDGE ROLL	10 LINEAL FT.	

COOPERATIVE EXTENSION WORK IN  
AGRICULTURE AND HOME ECONOMICS

UNITED STATES DEPARTMENT OF AGRICULTURE COOPERATIVE

SILAGE FEED BUNKS

CONN. 67 BK. 6012 SHEET 1 OF 1

REVISED 88