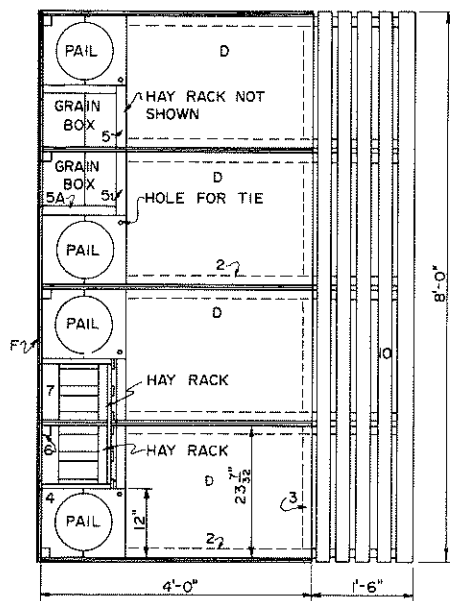
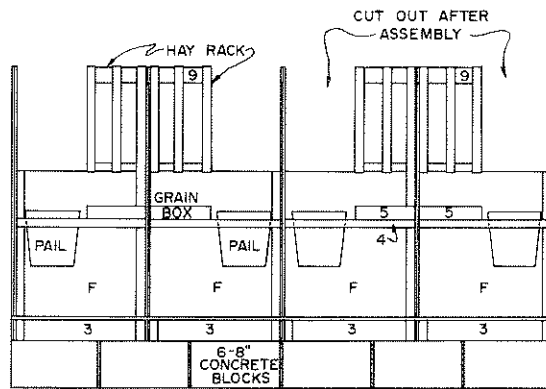


CROSS SECTION



PLAN VIEW

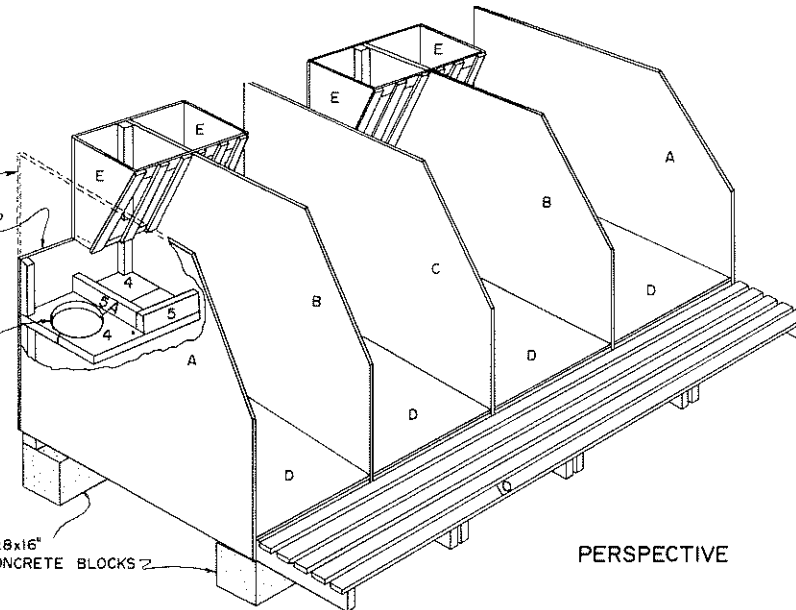


REAR VIEW

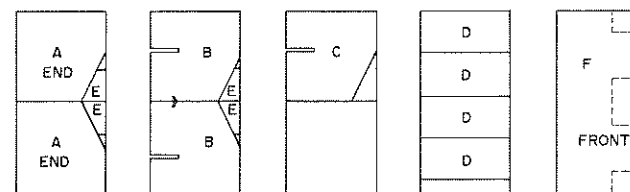
END OMITTED FOR CLARITY
CUT OUT AFTER ASSEMBLY IF FED FROM THE FRONT

CUT PAIL OPENING BEFORE ASSEMBLY

8x8x16" CONCRETE BLOCKS



PERSPECTIVE



PLYWOOD CUTTING DIAGRAM

SCALE: 0 2 4 6 FT.

PARTS LIST

- | | |
|--------------------------|-----------------|
| 1. FRONT ELEVATION BLOCK | 1 PC 2x4x8'-0" |
| 2. BED PIECES | 8 PCS 2x4x5'-6" |
| 3. FILLER BLOCKS | 4 PCS 2x4x20" |
| 4. TRAY BOTTOM | 2 PCS 2x8x8'-0" |
| 5. BOX EDGE | 4 PCS 2x4x12" |
| 5A. BOX EDGE | 4 PCS 2x4x14" |
| 6. CORNER BLOCKS | 5 PCS 2x2x4'-0" |
| 7. HAY RACK BOTTOM | 4 PCS 2x4x12" |
| 8. HAY RACK SLATS | 12 PCS 1x2x20" |
| 9. HAY RACK TOP RAIL | 2 PCS 1x3x24" |
| 10. REAR FLOOR SLATS | 5 PCS 1x3x8'-0" |

MATERIALS NEEDED FOR A SECTION OF FOUR STALLS

- | | |
|--|-----------------------------|
| 8 PCS 2x4x12'-0" | FOR PARTS NUMBER 1,2,3,5A,7 |
| 2 PCS 2x8x8'-0" | FOR PART NUMBER 4 |
| 44 LINEAR FT. 1x3 | FOR PARTS NUMBER 9,10 |
| 5 SHEETS 4x8 PLYWOOD, 3/8" EXTERIOR CUT AS IN DIAGRAMS | |
| 12 8x8x16" CONCRETE BLOCKS FOR BASE | |
| PORTLAND CEMENT MORTAR | |
| RUSTPROOF NAILS OR SCREWS | |
| 1 PC 2x2x12'-0" | FOR PART NUMBER 6 |
| 1 PC 2x2x8'-0" | FOR PART NUMBER 6 |
| 20 LINEAR FT. 1x2 | FOR PART NUMBER 8 |

NOTE: SCALE: 3/4"=1'-0" UNLESS OTHERWISE NOTED.

NOTE: MEASUREMENTS OF SOME PARTS ARE NOT DEFINITE. DIMENSION LUMBER VARIES SLIGHTLY IN SIZE, SO PIECES MUST BE CUT TO FIT.

COOPERATIVE EXTENSION WORK IN AGRICULTURE AND HOME ECONOMICS
DEPARTMENT OF AGRICULTURAL ENGINEERING
UNIVERSITY OF MARYLAND
AND
UNITED STATES DEPARTMENT OF AGRICULTURE, COOPERATING

CALF TIE STALL
PA. '68 EX. 6057 SHEET 1 OF 1