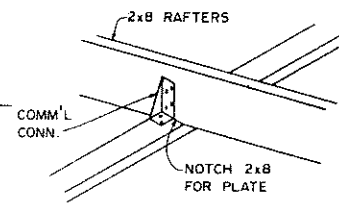


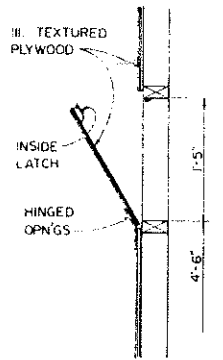
② DETAIL

NOTES:
 1/2" EXT. TYPE PLYWOOD OPTIONAL
 FOR INTERIOR SIDING

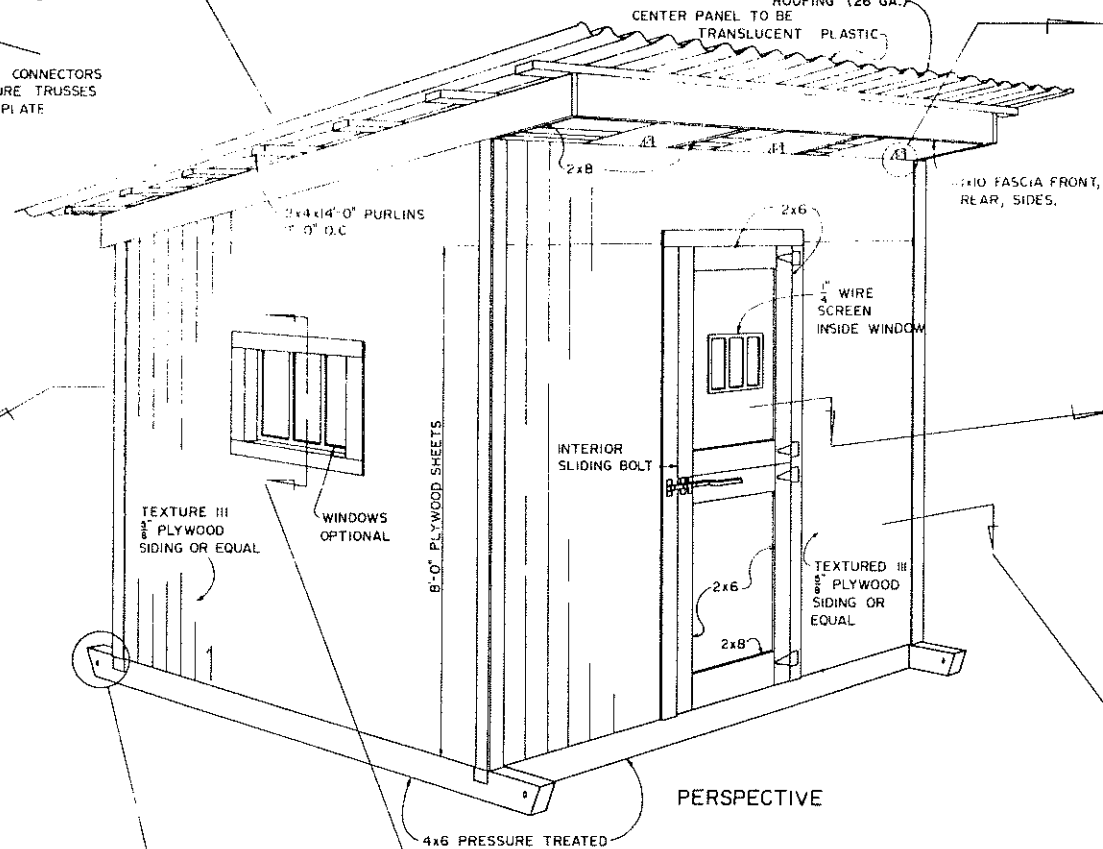
12'-0" SHEETS OF CORRUGATED
 ALUM. (.019) OR GALV. STEEL
 ROOFING (26 GA.)
 CENTER PANEL TO BE
 TRANSLUCENT PLASTIC



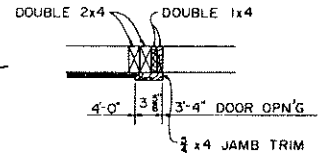
③ DETAIL



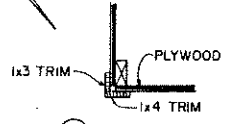
① DETAIL OF TWO
 OPN'GS AT REAR



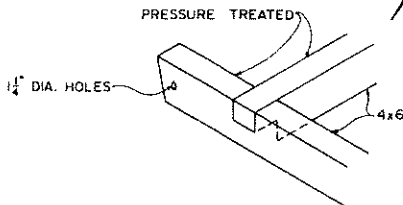
PERSPECTIVE



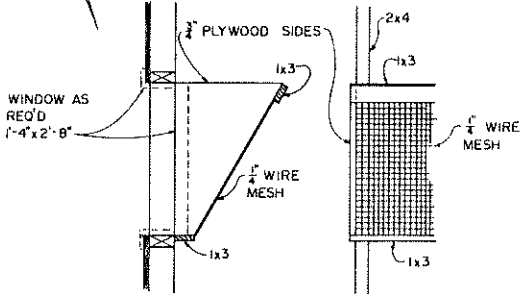
④ SECTION AT DOOR



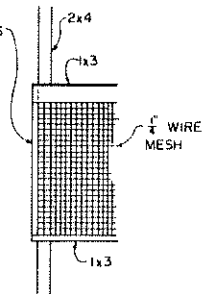
⑤ DETAIL



⑦ DETAIL



⑥ WINDOW GUARD
 SECTION



PARTIAL ELEV.

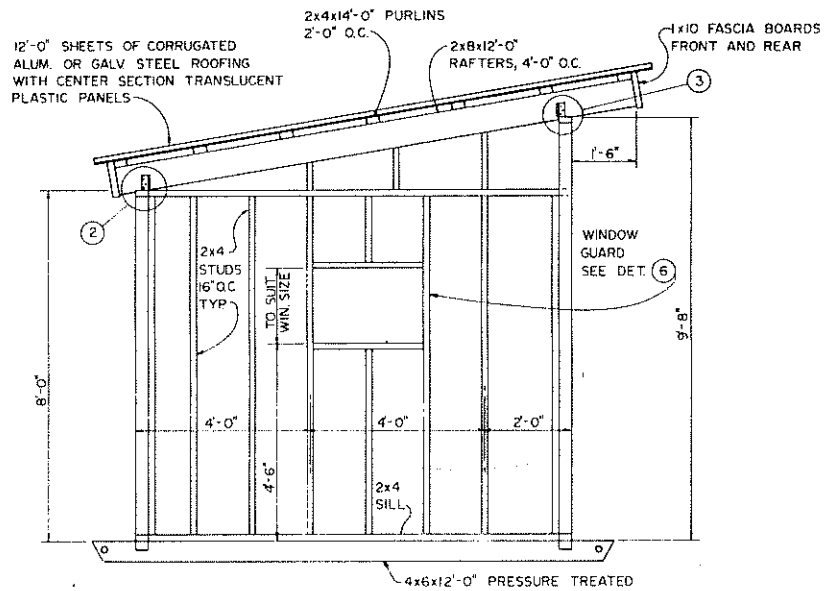
0 1 FT.
 SCALE: UNLESS OTHERWISE STATED

COOPERATIVE EXTENSION WORK IN
 AGRICULTURE AND HOME ECONOMICS
 DEPARTMENT OF AGRICULTURAL ENGINEERING
 UNIVERSITY OF MARYLAND
 AND
 UNITED STATES DEPARTMENT OF AGRICULTURE COOPERATING

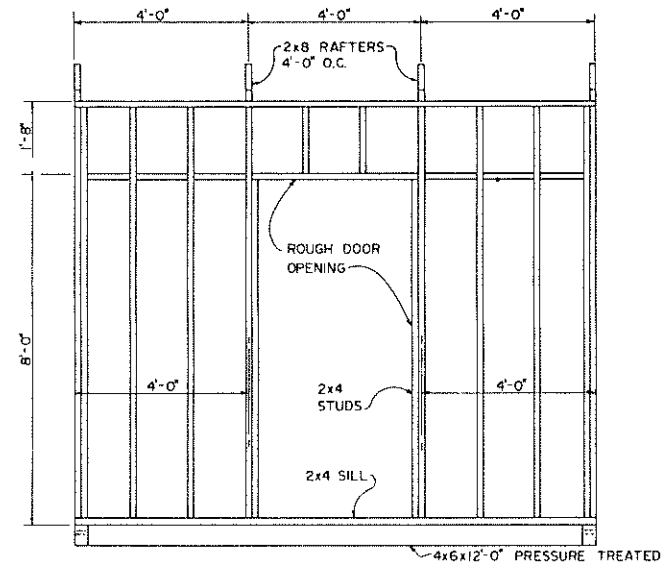
PORTABLE STABLE FOR A HORSE

N. J. '69	6082	SHEET 1 OF 2
-----------	------	--------------

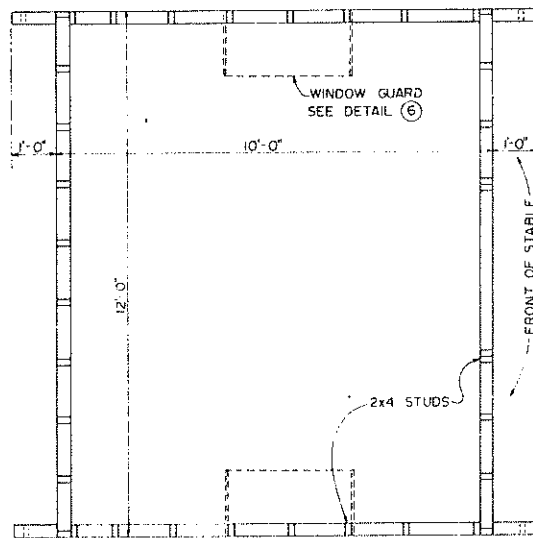
NOTE: BASED ON N. J. PLAN NO. 150



SIDES



FRONT



PLAN

MATERIAL LIST

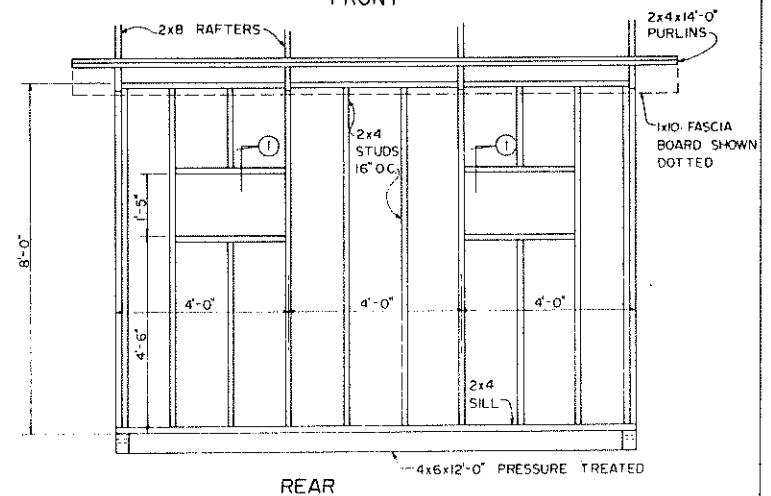
6-ALUM. OR GALV. STEEL ROOFING SHEETS (26"x144")
 1-TRANSLUCENT ROOF SHEET

LUMBER

7-2x4x14'-0"
 4-2x4x12'-0"
 12-2x4x10'-0"
 36-2x4x8'-0"
 4-2x8x12'-0"
 2-4x6x12'-0" P.T.
 2-4x6x12'-0" P.T.
 2-1x10x14'-0"
 2-1x10x12'-0"
 5-1x3x10'-0"
 8-1x4x10'-0"
 3-3/4x4x8'-0"

MISCELLANEOUS

8-COMMERCIAL CONNECTORS
 1-DOOR (MAT'L AS REQ'D)
 4-HEAVY DUTY T-HINGES
 4-3"HINGES FOR REAR OPNG'S
 2-LATCHES FOR REAR OPNG'S
 2-16"x32" 3 LITE WINDOWS OPT'L
 NAILS, LAG SCREWS, ETC. AS REQ'D



REAR

FRAMING DETAILS

NOTE: SCALE: 0 1 2 3 FT. UNLESS OTHERWISE STATED

COOPERATIVE EXTENSION WORK IN AGRICULTURE AND HOME ECONOMICS
 DEPARTMENT OF AGRICULTURAL ENGINEERING
 UNIVERSITY OF MARYLAND
 AND
 UNITED STATES DEPARTMENT OF AGRICULTURE COOPERATING

PORTABLE STABLE FOR A HORSE

N.J. '69 6082 SHEET 2 OF 2