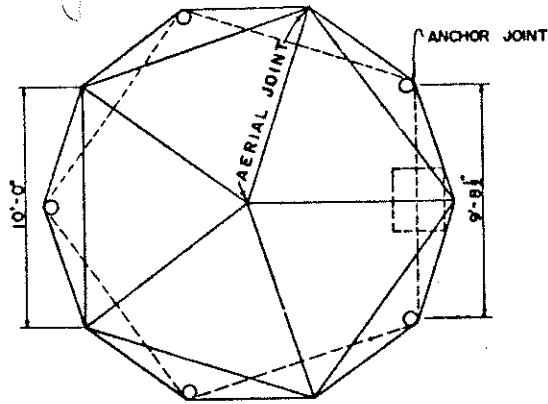
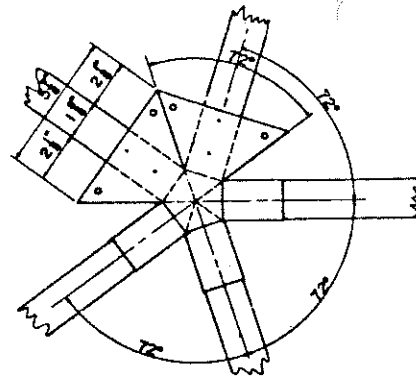


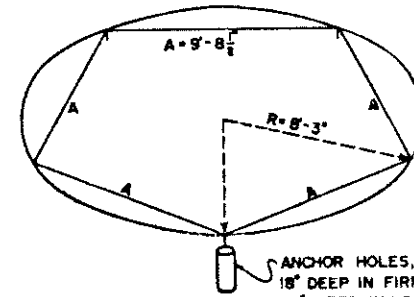
NOTE: FOUNDATION POINTS WILL ALL BE SAME DISTANCE "A" FROM THE SAME RADIUS "R" FROM CENTER POINT.



PLAN

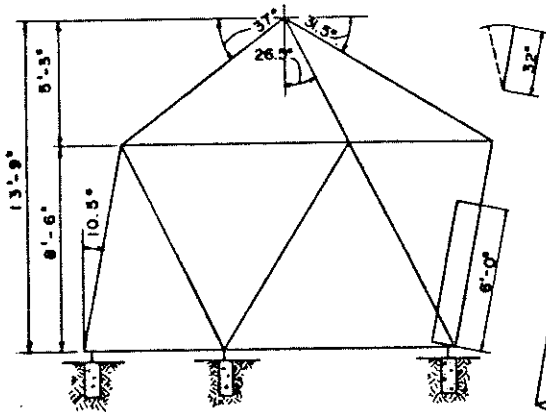


PLAN OF AERIAL JOINT

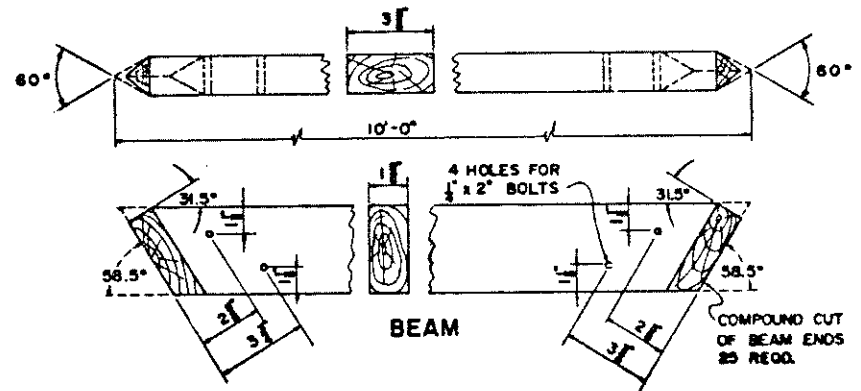
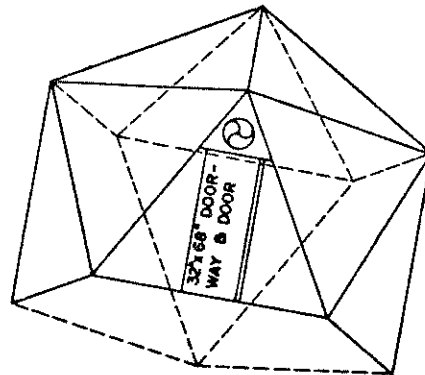


FOUNDATION LAYOUT

PUT STAKE AT EACH MEASURED POINT TO MARK HOLE LOCATION



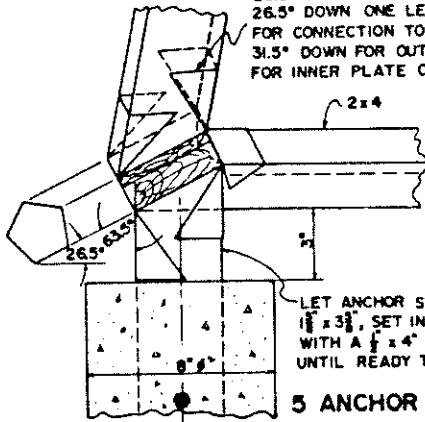
ELEVATION



BEAM

COMPOUND CUT OF BEAM ENDS AS REQD.

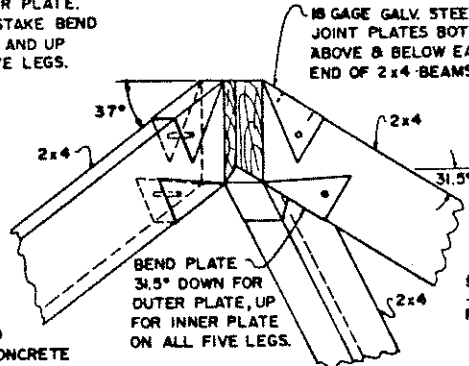
BEND GALVANIZED STEEL PLATE 26.5° UP ON ONE LEG OF OUTER PLATE AND 26.5° DOWN ONE LEG OF INNER PLATE. FOR CONNECTION TO ANCHOR STAKE BEND 31.5° DOWN FOR OUTER PLATE AND UP FOR INNER PLATE ON ALL FIVE LEGS.



LET ANCHOR STAKE, 1 1/2" x 3 1/2", SET IN HOLE WITH A 1/2" x 4" CROSS ROD UNTIL READY TO POUR CONCRETE

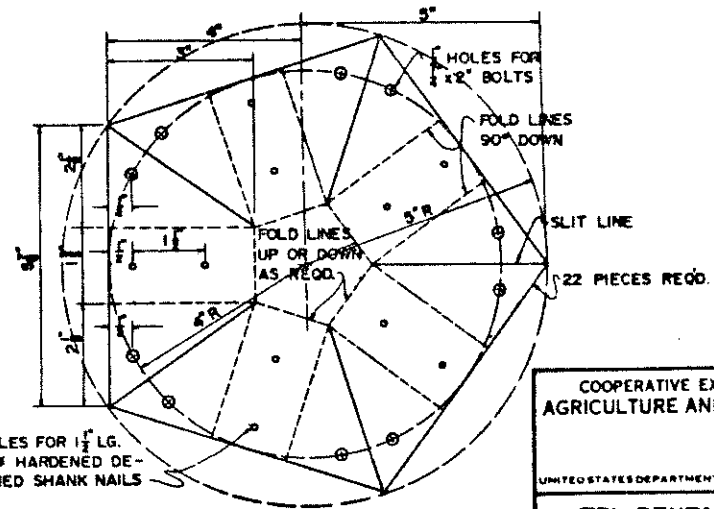
5 ANCHOR JOINTS

18 GAGE GALV. STEEL JOINT PLATES BOTH ABOVE & BELOW EACH END OF 2x4 BEAMS



BEND PLATE 31.5° DOWN FOR OUTER PLATE, UP FOR INNER PLATE ON ALL FIVE LEGS.

6 AERIAL JOINTS



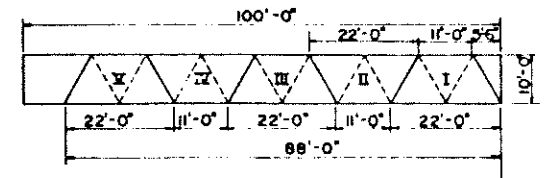
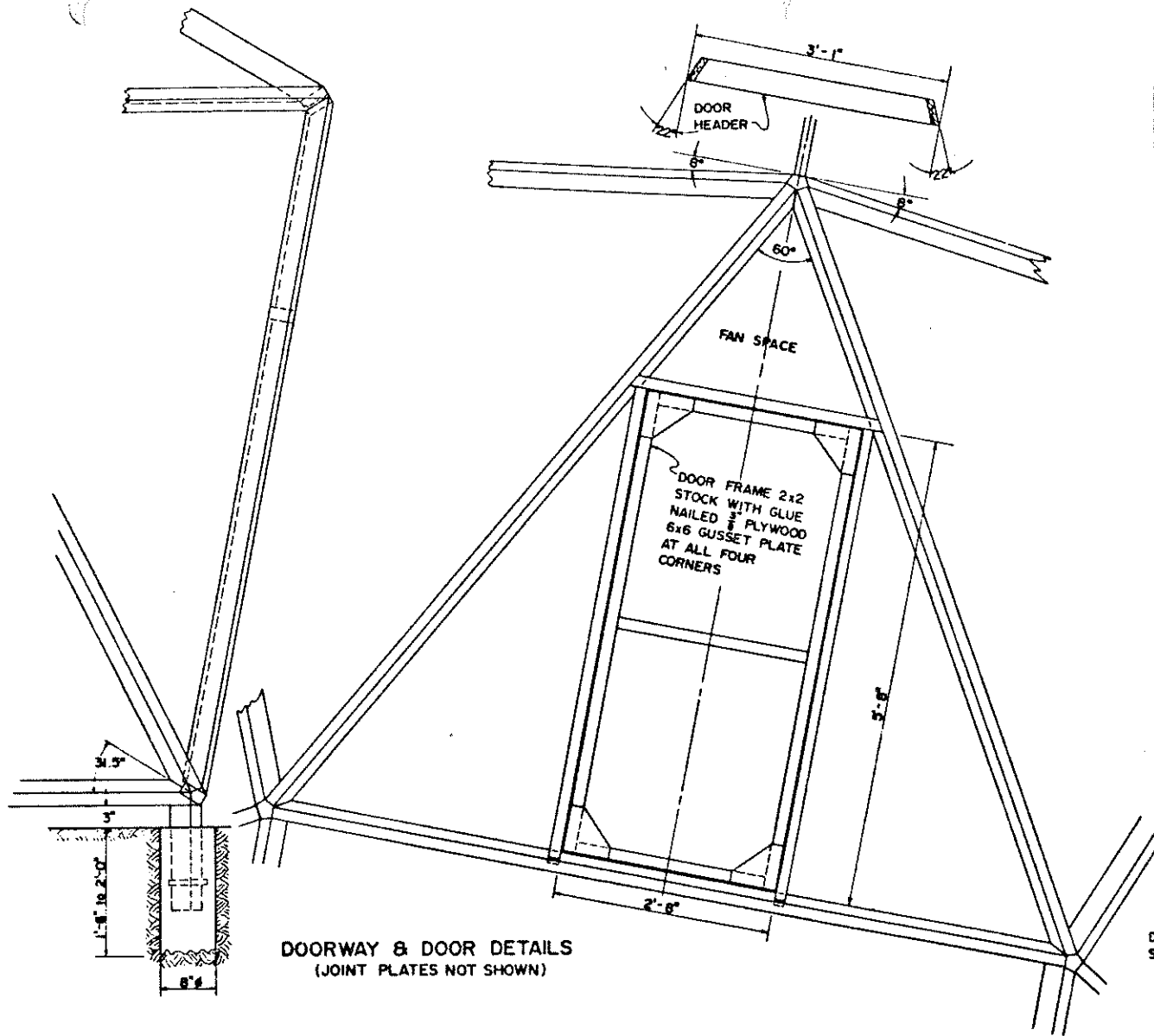
JOINT PLATE OF 18 GAGE STEEL

COOPERATIVE EXTENSION WORK IN AGRICULTURE AND HOME ECONOMICS

AND UNITED STATES DEPARTMENT OF AGRICULTURE COOPERATING

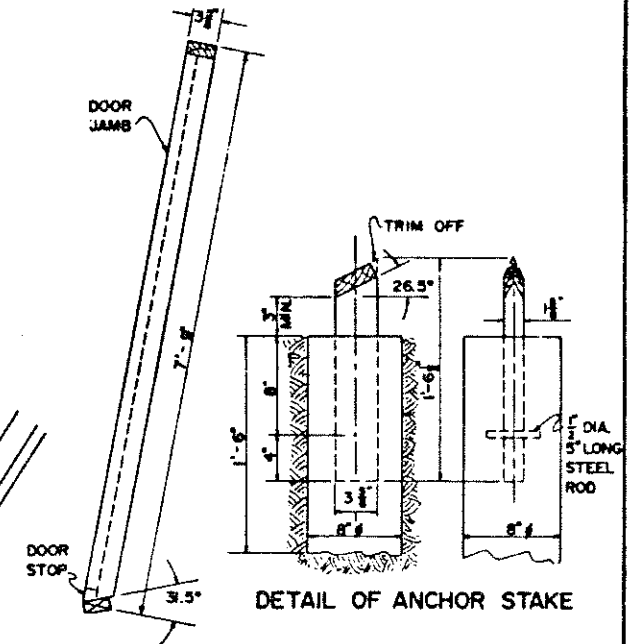
TRI-PENTA GREENHOUSE

USDA 71 6097 SHEET 1 OF 3



LAYOUT PLAN FOR FILM SECTIONS

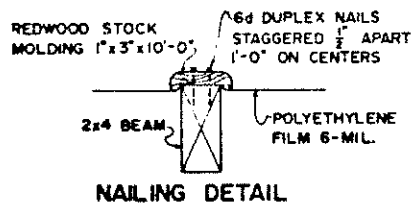
DOORWAY & DOOR DETAILS  
(JOINT PLATES NOT SHOWN)



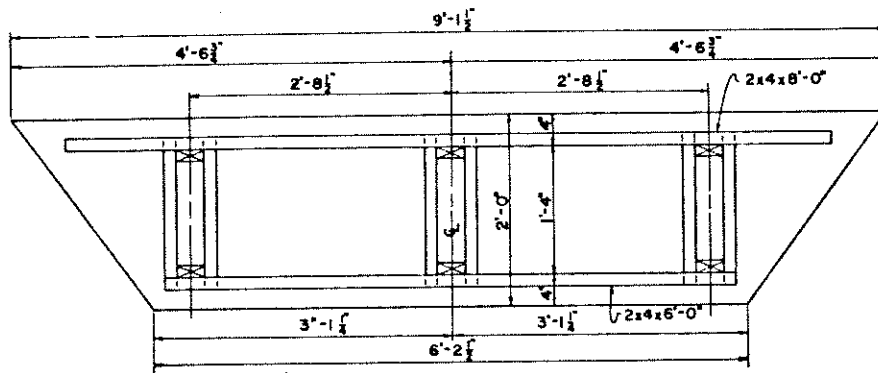
DETAIL OF ANCHOR STAKE

COVERING PROCEDURES

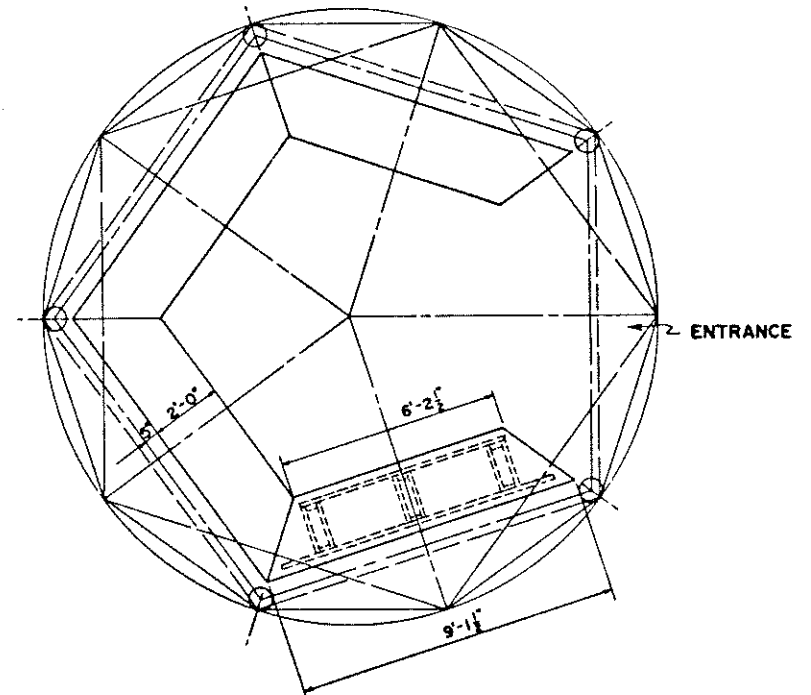
1. 6 MIL. POLY FILM SHOULD BE ORDERED IN 100'-0" ROLL, 10'-0" WIDE.
2. THIS SECTION WILL COVER 3 TRIANGULAR SURFACES; ONE CROWN AND TWO SIDE SURFACES.



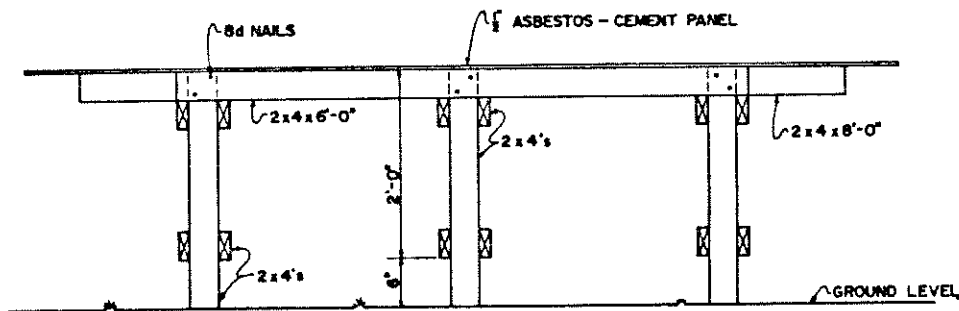
COOPERATIVE EXTENSION WORK IN AGRICULTURE AND HOME ECONOMICS		
AND UNITED STATES DEPARTMENT OF AGRICULTURE COOPERATING		
TRI-PENTA GREENHOUSE		
USDA 71	6097	SHEET 2 OF 3



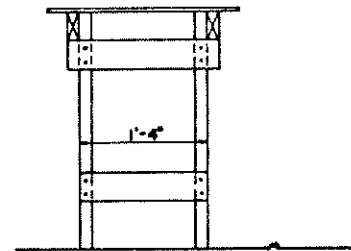
PLAN OF BENCH  
4 REQUIRED  
(SHOWING FRAME BELOW PANEL TOP)



ARRANGEMENT OF BENCHES



FRONT ELEVATION



END ELEVATION

COOPERATIVE EXTENSION WORK IN  
AGRICULTURE AND HOME ECONOMICS

AND  
UNITED STATES DEPARTMENT OF AGRICULTURE COOPERATING

TRI-PENTA GREENHOUSE

USDA 71 6097 SHEET 3 OF 3