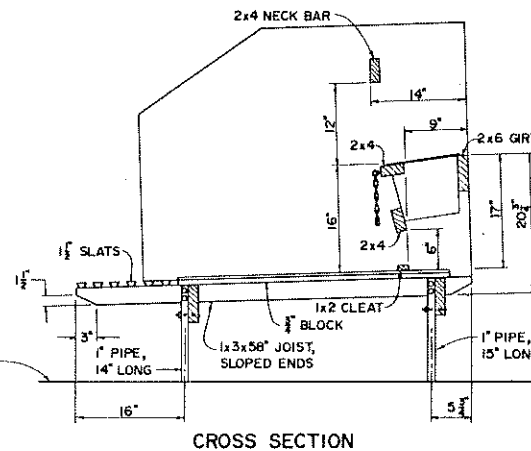


MATERIALS:

PARTITIONS AND FLOOR	2 SHEETS	4x8x1/2 EXTERIOR PLYWOOD
JOISTS	4	1x3x58"
PAIL HOLDER, NECK BAR	3	2x4x42 1/2"
SUPPORT	2	2x6x43 1/2"
GIRT	1	2x6x42 1/2"
CLEAT	2	1x2x21"
BLOCKING	4	3/4x3/4x40"
PIPE LEGS	2	1" DIA, 14" LONG
	2	1" DIA, 15" LONG
SLATS (HARDWOOD)	1	3/4x8x43 1/2"
EYEBOLTS, BOLTS, NAILS, CHAINS, 8 QUART PAIS		

- NOTES:**
- SCALE: 1" = 1'-0" UNLESS OTHERWISE NOTED.
 - CHECK PAIL SIZE BEFORE STARTING CONSTRUCTION.
 - IF BEDDING IS NOT USED, REPLACE FLOOR WITH 9 GAUGE EXPANDED METAL.



BASED ON: CORNELL UNIV. PLAN No. 837

COOPERATIVE EXTENSION WORK IN
AGRICULTURE AND HOME ECONOMICS
DEPARTMENT OF AGRICULTURAL ENGINEERING
UNIVERSITY OF MARYLAND
AND
UNITED STATES DEPARTMENT OF AGRICULTURE COOPERATING

**PORTABLE STALLS
FOR CALVES**

N.Y. '71 EX. 6138 SHEET 1 OF 1