

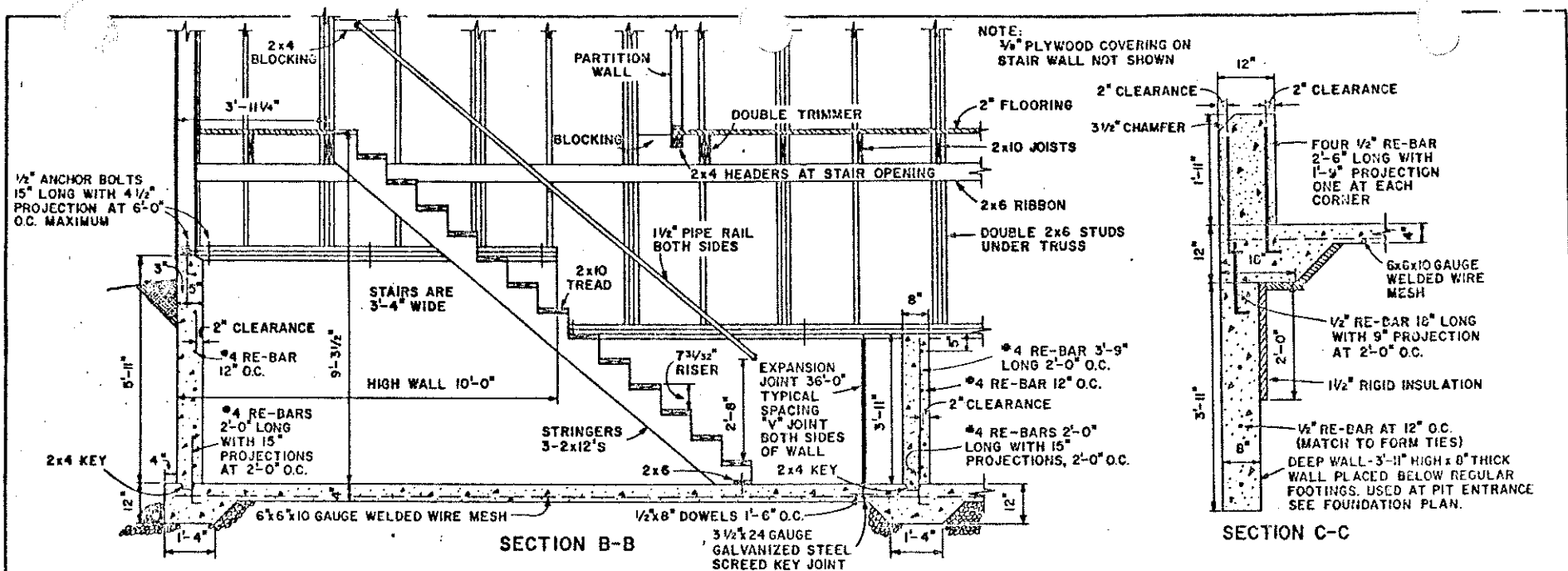
SECTION A-A

COOPERATIVE EXTENSION WORK IN
 AGRICULTURE AND HOME ECONOMICS

AND
 UNITED STATES DEPARTMENT OF AGRICULTURE COOPERATING

**CAGE LAYING HOUSE
 FOR POULTRY**

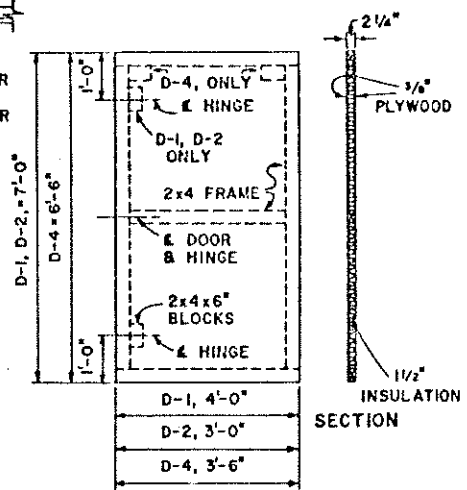
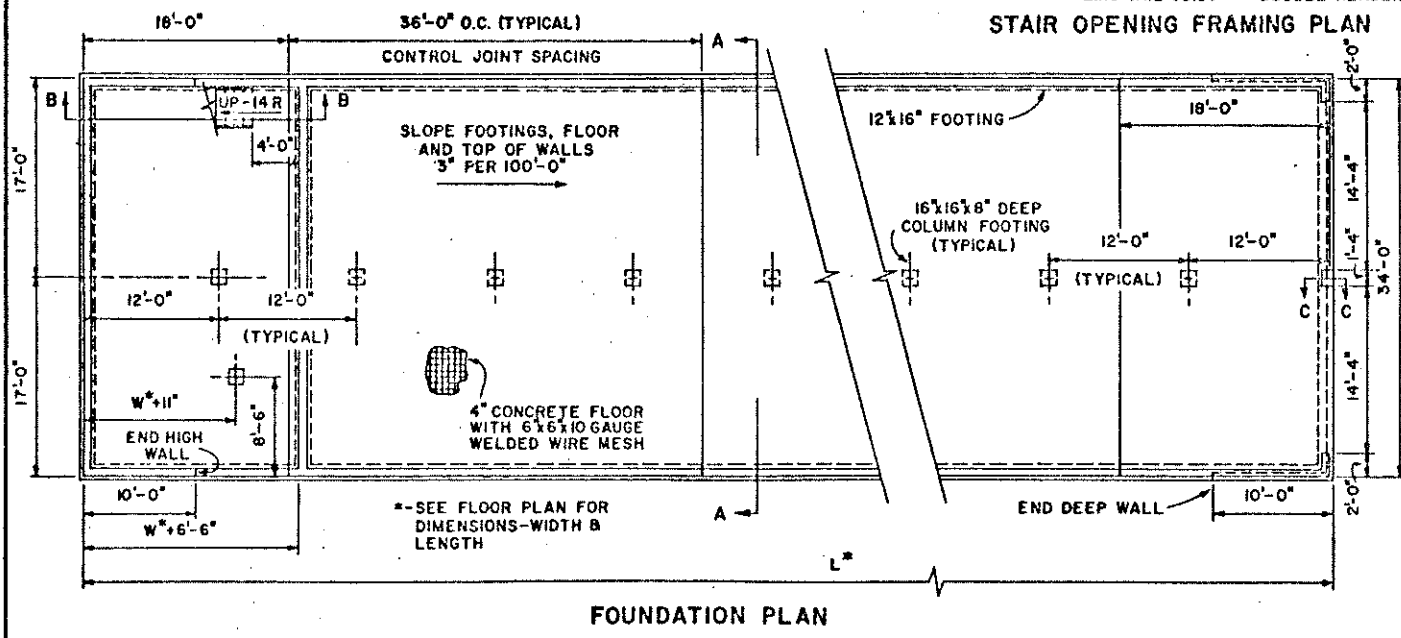
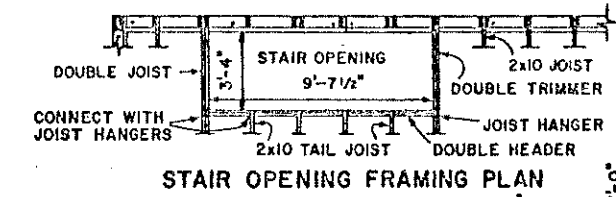
ME.	'73	6166	SHEET 2 OF 6
-----	-----	------	--------------

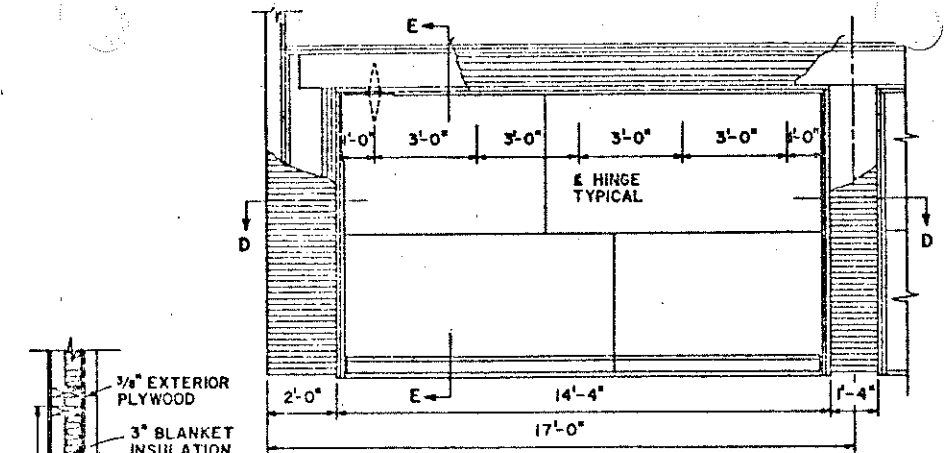


DOOR SCHEDULE

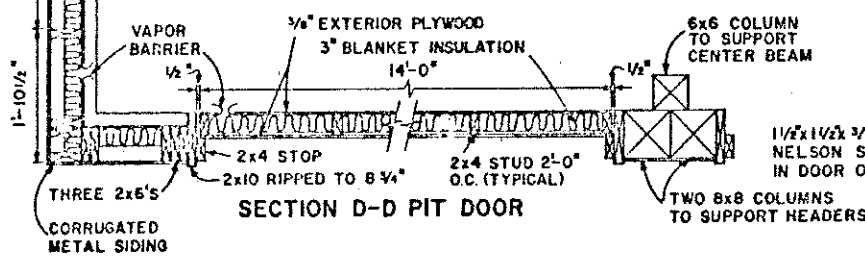
DOOR	SIZE	FRAME
D-1	4'-0" x 7'-0"	2x8
D-2	3'-0" x 7'-0"	2x8
D-4	3'-6" x 6'-6"	TRACK

NOTE: D-3, DOORS
EGG COOLER DOORS 3'-0" x 6'-2 1/2" APPROXIMATELY.
USE A COMMERCIAL TYPE DOOR WITH GASKETS
ON ALL EDGES AND USING NO BOTTOM PLATE
THAT WOULD HAMPER EGG CART MOVEMENT.

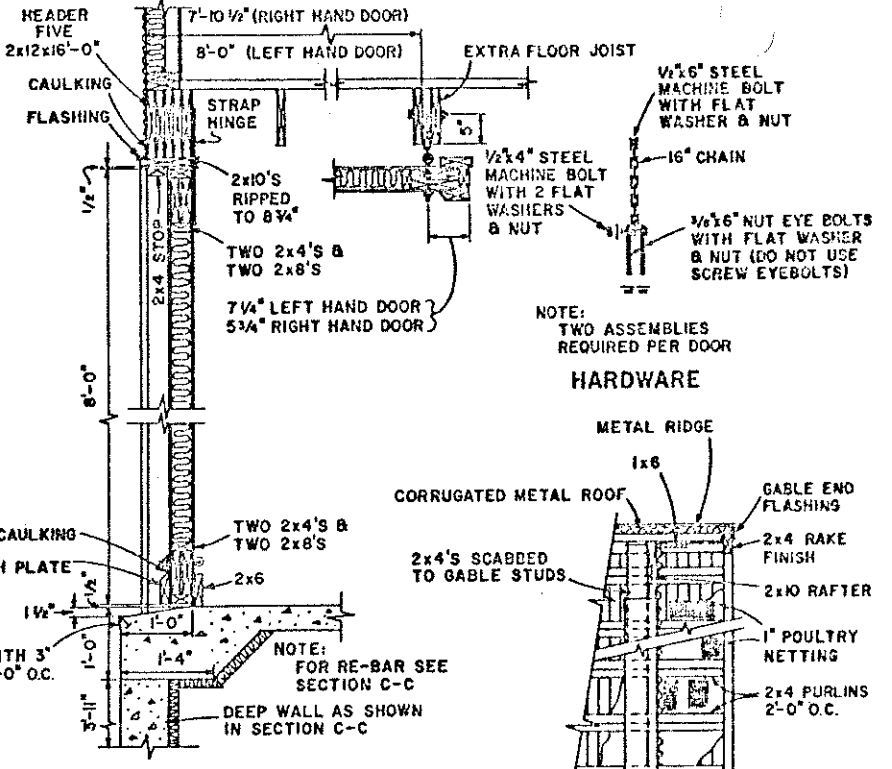




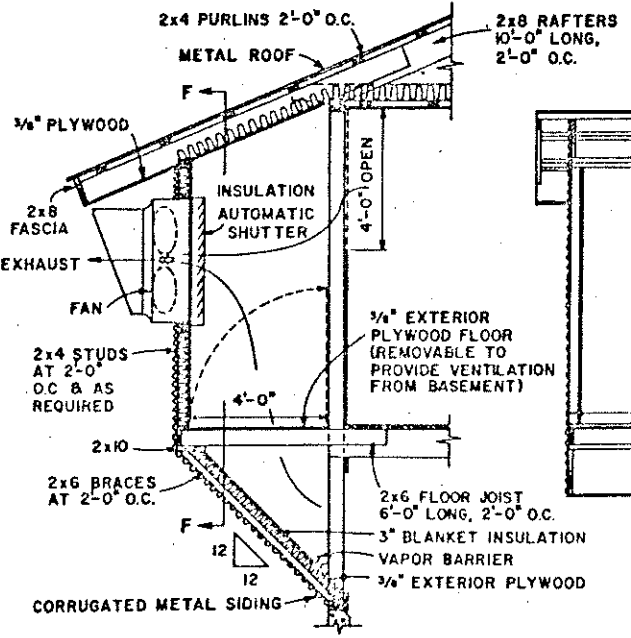
ELEVATION PIT DOOR



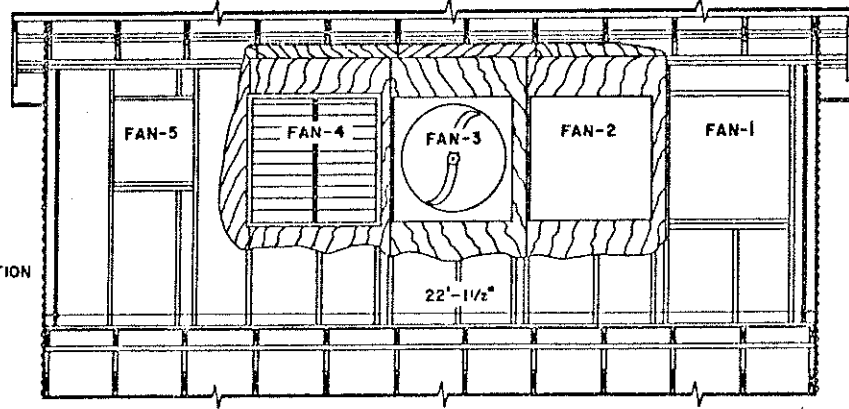
SECTION D-D PIT DOOR



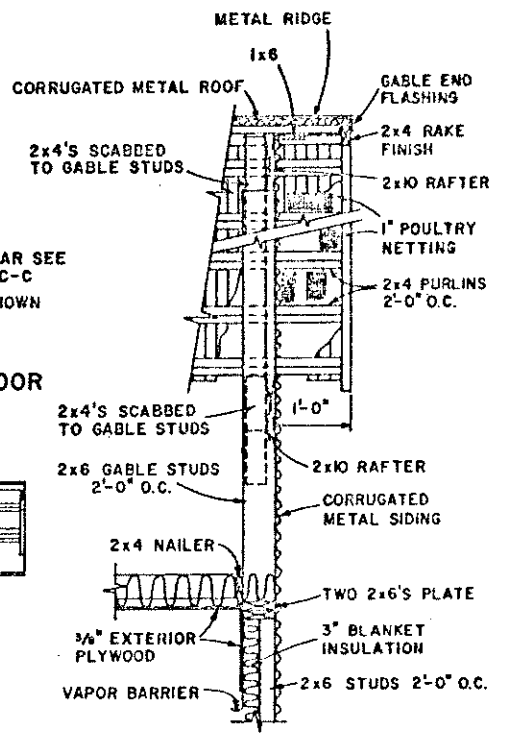
SECTION E-E PIT DOOR



FAN HOUSE SECTION



SECTION F-F



TYPICAL END WALL SECTION

- NOTES:
1. FAN OPENING DIMENSIONS AS REQUIRED BY MANUFACTURER.
 2. FANS 1, 2, 3 & 4 RATED FOR 10,000 CFM AT 1/8" STATIC PRESSURE WITHOUT SHUTTERS AND HOODS, OR AT 0.05" STATIC PRESSURE WITH ALL ACCESSORIES IN PLACE.
 3. FAN 5 MAY BE VARIABLE OR TWO SPEED RATED FOR 2,500 CFM MINIMUM TO 5,000 CFM MAXIMUM CFM RATED AS FOR OTHER FANS.

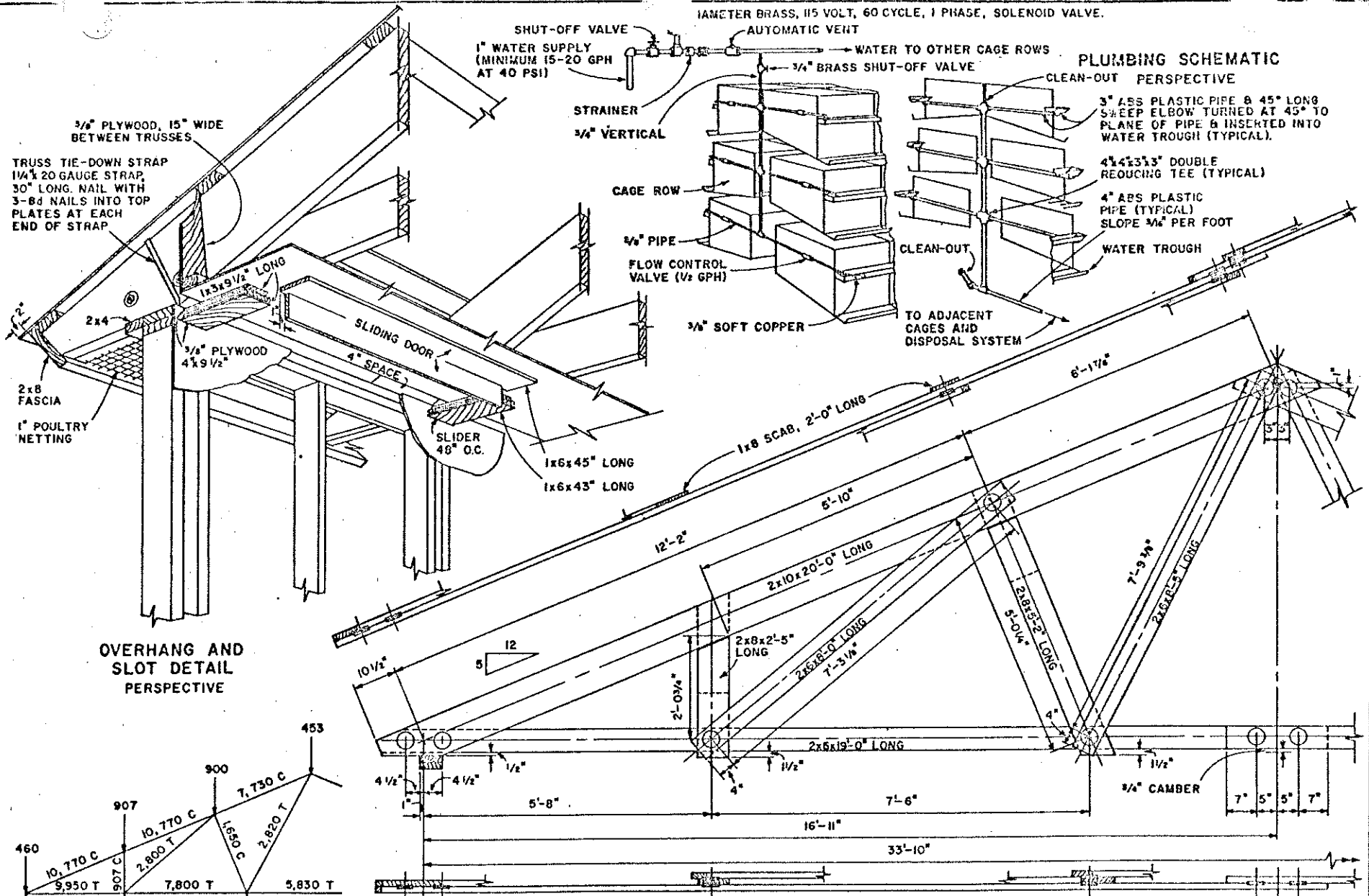
COOPERATIVE EXTENSION WORK IN AGRICULTURE AND HOME ECONOMICS

AND UNITED STATES DEPARTMENT OF AGRICULTURE COOPERATING

CAGE LAYING HOUSE FOR POULTRY

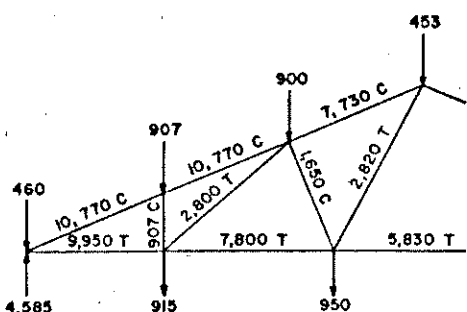
ME. '73 6166 SHEET 4 OF 6

1/4" DIAMETER BRASS, 115 VOLT, 60 CYCLE, 1 PHASE, SOLENOID VALVE.



OVERHANG AND SLOT DETAIL PERSPECTIVE

TRUSS



LOAD DIAGRAM

- NOTES:**
1. SPACE TRUSSES 4'-0" O.C.
 2. DIMENSIONS SHOWN WILL PRODUCE 3/4" CAMBER IN LOWER CHORD.
 3. CONNECTIONS:
 - USE 4" DIAMETER SPLIT RINGS
 - 3/4" MACHINE BOLTS AND WASHERS
 4. HANG CAGES AT PANEL POINTS ONLY

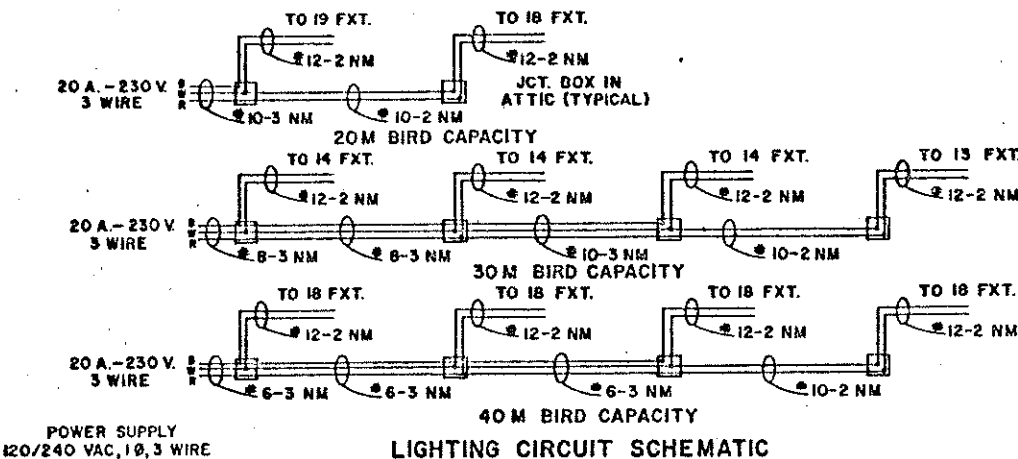
- SPECIFICATIONS:**
1. LOADS:
 - LIVE, 35 POUNDS PER SQUARE FOOT
 - DEAD, 5 POUNDS PER SQUARE FOOT
 - CEILING, 10 POUNDS PER SQUARE FOOT
 - WIND, 25 POUNDS PER SQUARE FOOT VERTICAL PROJECTION
 - CAGES, 650 POUNDS AT LOWER CHORD PANEL POINTS
 2. LUMBER
 - NUMBER 1 EASTERN SPRUCE OR EASTERN HEMLOCK

COOPERATIVE EXTENSION WORK IN AGRICULTURE AND HOME ECONOMICS

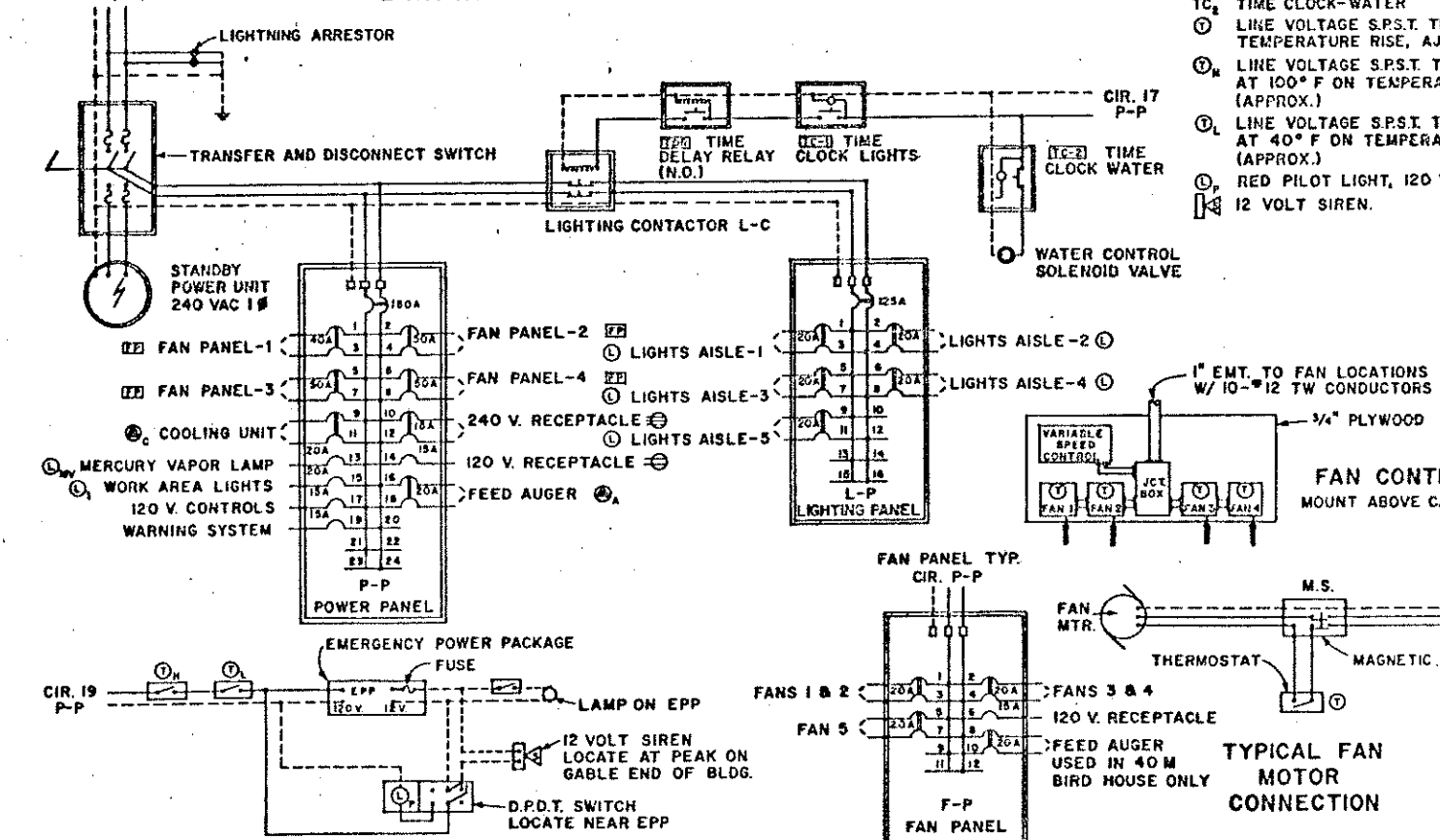
UNITED STATES DEPARTMENT OF AGRICULTURE COOPERATING

CAGE LAYING HOUSE FOR POULTRY

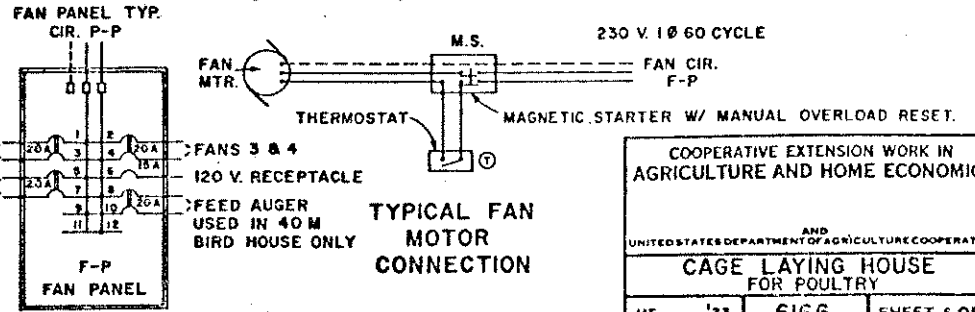
ME.	'73	C166	SHEET 5 OF 6
-----	-----	------	--------------



LIGHTING CIRCUIT SCHEMATIC



WARNING SYSTEM SCHEMATIC



TYPICAL FAN MOTOR CONNECTION

LEGEND

- Ⓛ PORCELAIN LAMPHOLDER, KEYLESS, 1 PIECE, 660 W, 250 V, 40 W, 125 V, BULB.
- Ⓛ₁ PORCELAIN LAMPHOLDER, KEYLESS, 1 PIECE, 660 W, 250 V, 100 W, 125 V, BULB.
- Ⓛ₁₇₅ 175 W MERCURY VAPOR LAMP WITH PHOTO CELL.
- Ⓛ₁₅ DUPLEX RECEPTACLE 15 AMP, 125 V.
- Ⓛ₂₅₀ DUPLEX RECEPTACLE 15 AMP, 250 V.
- Ⓛ_{15WP} DUPLEX WEATHERPROOF RECEPTACLE. 15 AMP. 125 V., RECEPTACLE AS ABOVE, WITH SPRING LOADED LIFT COVER PLATE.
- Ⓛ₅ VENTILATING FAN CONNECTIONS (5 EACH FAN BANK).
- Ⓛ₁₀ COOLING UNIT CONNECTION, 230 V, 1Ø, FUSED SAFETY SWITCH TIME DELAY CARTRIDGE FUSES, CHECK CURRENT RATING OF COOLING UNIT.
- Ⓛ₂ CONNECTION TO FEED AUGER MOTOR, TOGGLE OPERATED, 2 POLE, 1 H.P. MANUAL MOTOR STARTING SWITCH WITH OVERLOAD PROTECTION.
- S 15 A., 120 V. TOGGLE TYPE SWITCH.
- S₃ 15 A., 120 V. 3-WAY TOGGLE TYPE SWITCH.
- Ⓛ₁₀ FAN PANEL, 1Ø, 3 WIRE, 120/240 VOLT A.C., 125 A. MAIN LUGS ONLY, 12-1" SPACES.
- Ⓛ₁₀ FAN CONTROL PANEL, SEE DETAIL.
- Ⓛ₁₀ LIGHTING PANEL, 1Ø, 3 WIRE, 120/240 VOLT A.C., 125 A. MAIN BREAKER, 16-1" SPACES.
- Ⓛ₁₀ POWER PANEL, 1Ø, 3 WIRE, 120/240 VOLT A.C., 150 A. MAIN BREAKER, 24-1" SPACES.
- Ⓛ₁₀ AUXILIARY PANEL, (OPTIONAL)
- TC₁ TIME CLOCK-LIGHTS
- TC₂ TIME CLOCK-WATER
- Ⓛ₁ LINE VOLTAGE S.P.S.T. THERMOSTAT SET TO MAKE CONTACT ON TEMPERATURE RISE, ADJUSTABLE RANGE 45 TO 85° F. MIN.
- Ⓛ₁₀ LINE VOLTAGE S.P.S.T. THERMOSTAT SET TO BREAK CONTACT AT 100° F ON TEMPERATURE RISE. RANGE 50 TO 150° F (APPROX.)
- Ⓛ₁₀ LINE VOLTAGE S.P.S.T. THERMOSTAT SET TO BREAK CONTACT AT 40° F ON TEMPERATURE FALL. RANGE 0 TO 100° F (APPROX.)
- Ⓛ₁₀ RED PILOT LIGHT, 120 V., 6 WATTS.
- Ⓛ₁₀ 12 VOLT SIREN.