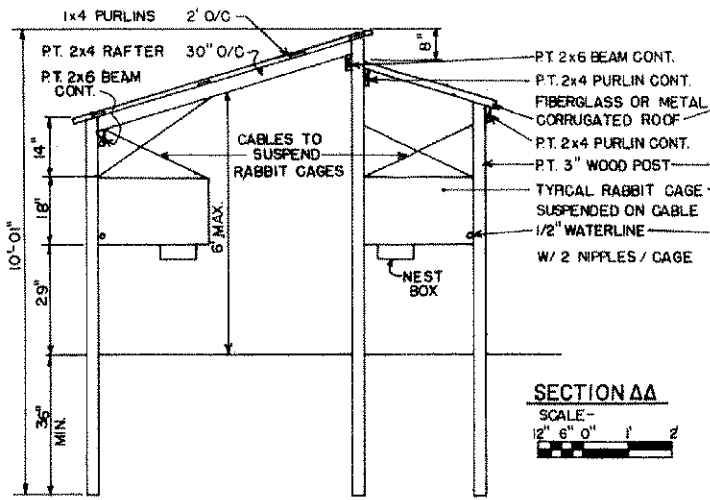
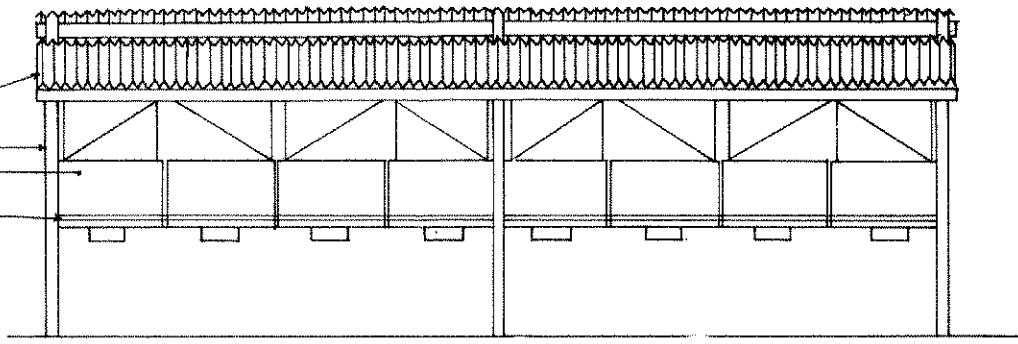


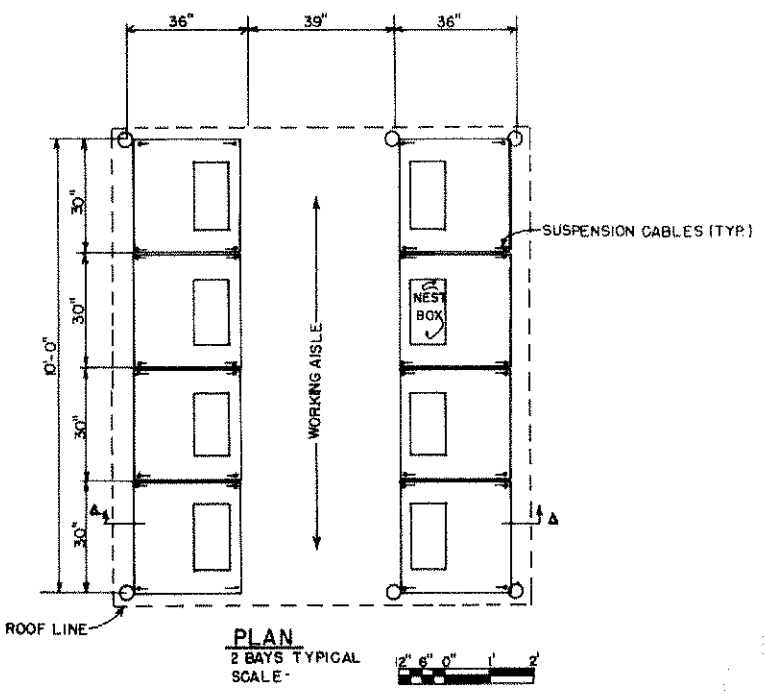
WINTER WIND → ← SUMMER WIND



SECTION AA
SCALE -
12" 6" 0" 1' 2'



ELEVATION
4 BAYS TYPICAL
SCALE -
12" 6" 0" 1' 2'



PLAN
2 BAYS TYPICAL
SCALE -
12" 6" 0" 1' 2'

NOTES:

1. BUILDING MAY BE CONSTRUCTED ANY LENGTH DESIRED.
2. SUSPEND CAGES SO THAT CAGES MAY BE REMOVED FOR CLEANING. CAGE SUSPENSION MUST PREVENT ANY CAGE MOVEMENT.
3. IF WORM BEDS ARE DESIRED UNDER CAGE ATTACH 1x6 P.T. TO OUTSIDE OF POST W/GALV. NAILS TO RUN 5" ABOVE EXISTING GRADE.
4. PROVIDE SHADE AND WIND PROTECTION FOR RABBITS WITH OPERABLE SCREENS OR SHADES. MAINTAIN 2" AIRSPACE BETWEEN SHADE AND CAGE MINIMUM.
5. PROTECT NEST BOXES DURING COLD WEATHER WITH WOOD BOX MADE TO FIT OVER OUTSIDE WALLS OF NEST BOX. SUSPEND W/WIRE ON BOTTOM OF CAGE.
6. ROOFING MAY BE CUT FROM 10' LONG ROOFING MAT'L. (1'-7" LG., 1'-3" LG.) WITHOUT WASTE.

COOPERATIVE EXTENSION WORK IN AGRICULTURE AND HOME ECONOMICS		
AND UNITED STATES DEPARTMENT OF AGRICULTURE COOPERATING		
RABBIT HOUSING (MEAT TYPE) POLE STRUCTURE CAGE SHELTER		
FLA '82	EX. 6340	SHEET 1 OF 1