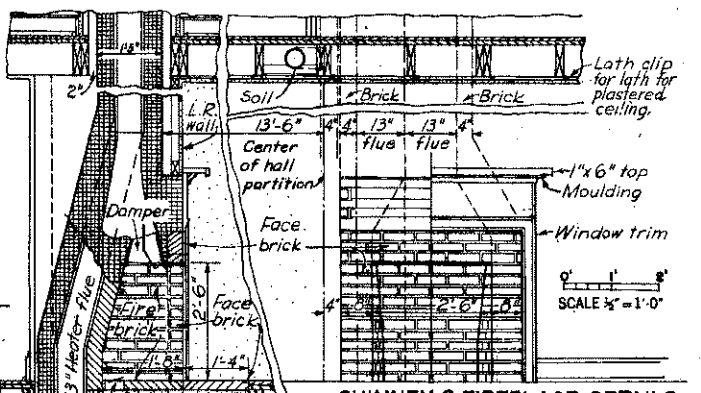
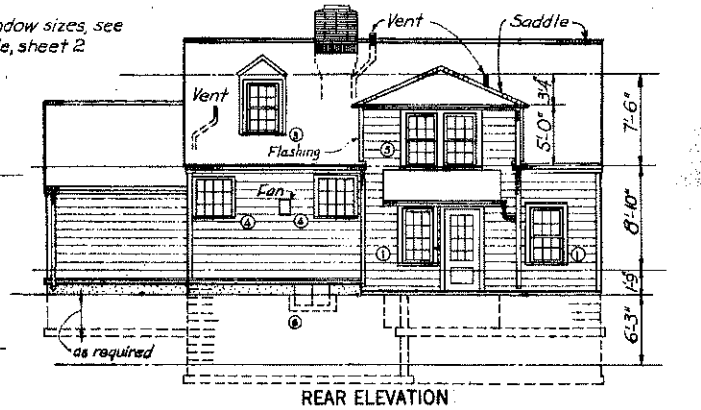
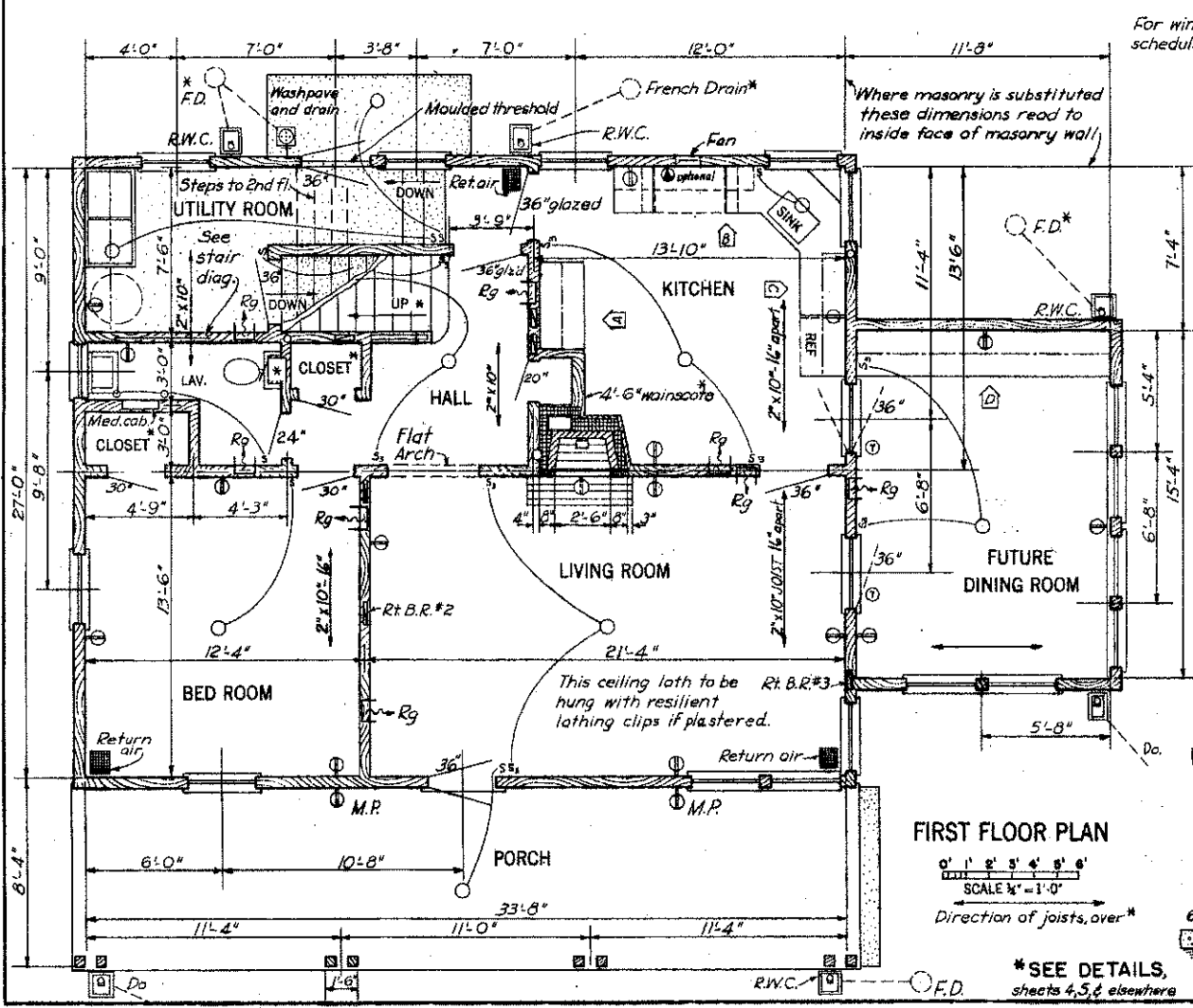
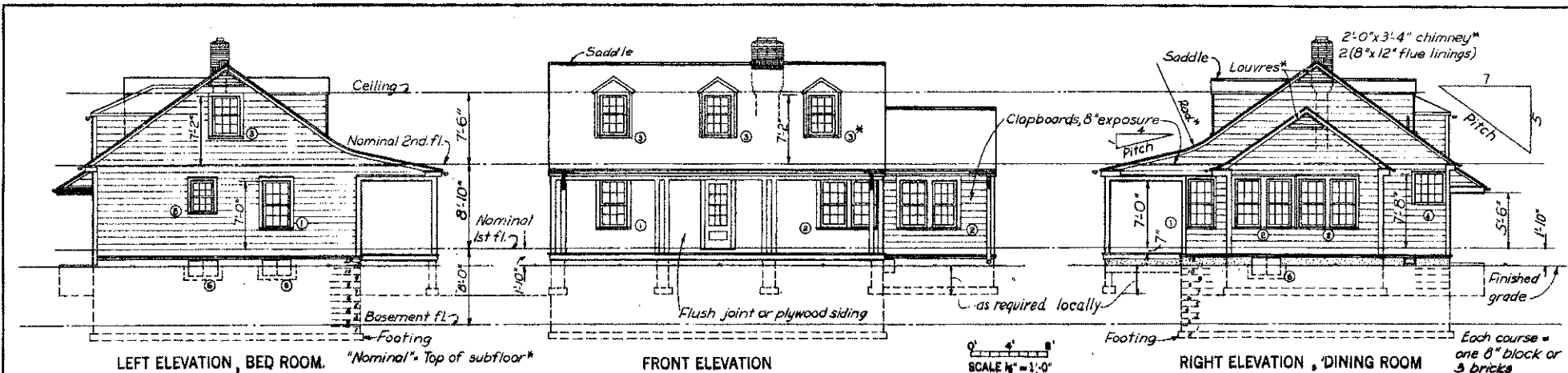


Where masonry is substituted replace sheet 5 with 7031.



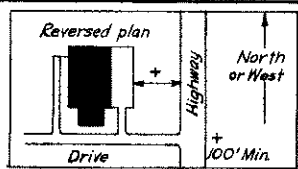
CHIMNEY & FIREPLACE DETAILS

COOPERATIVE EXTENSION WORK IN AGRICULTURE AND HOME ECONOMICS
 STATE OF NORTH DAKOTA
 NORTH DAKOTA AGRICULTURAL COLLEGE
 AND
 UNITED STATES DEPARTMENT OF AGRICULTURE COOPERATING

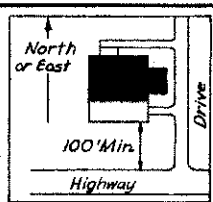
FARMHOUSE PLAN

| | | |
|------|----------|--------------|
| USDA | EX. 7017 | SHEET 1 OF 5 |
|------|----------|--------------|

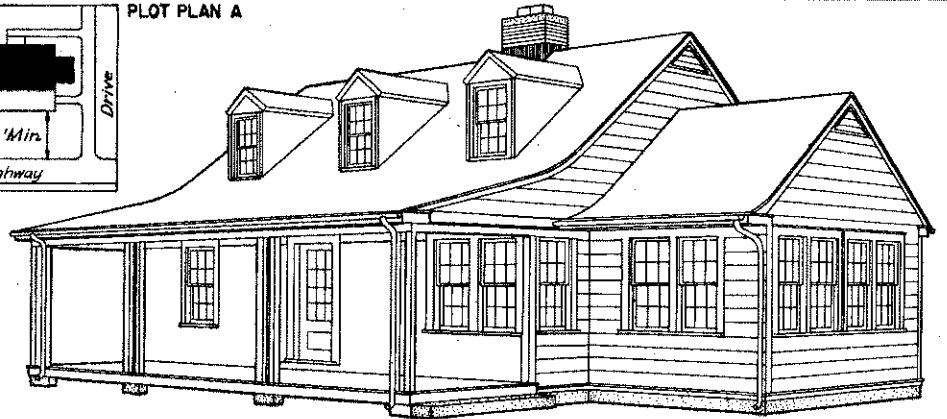
*SEE DETAILS, sheets 4, 5, elsewhere



PLOT PLAN B



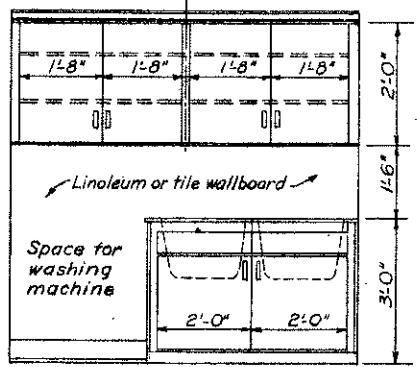
PLOT PLAN A



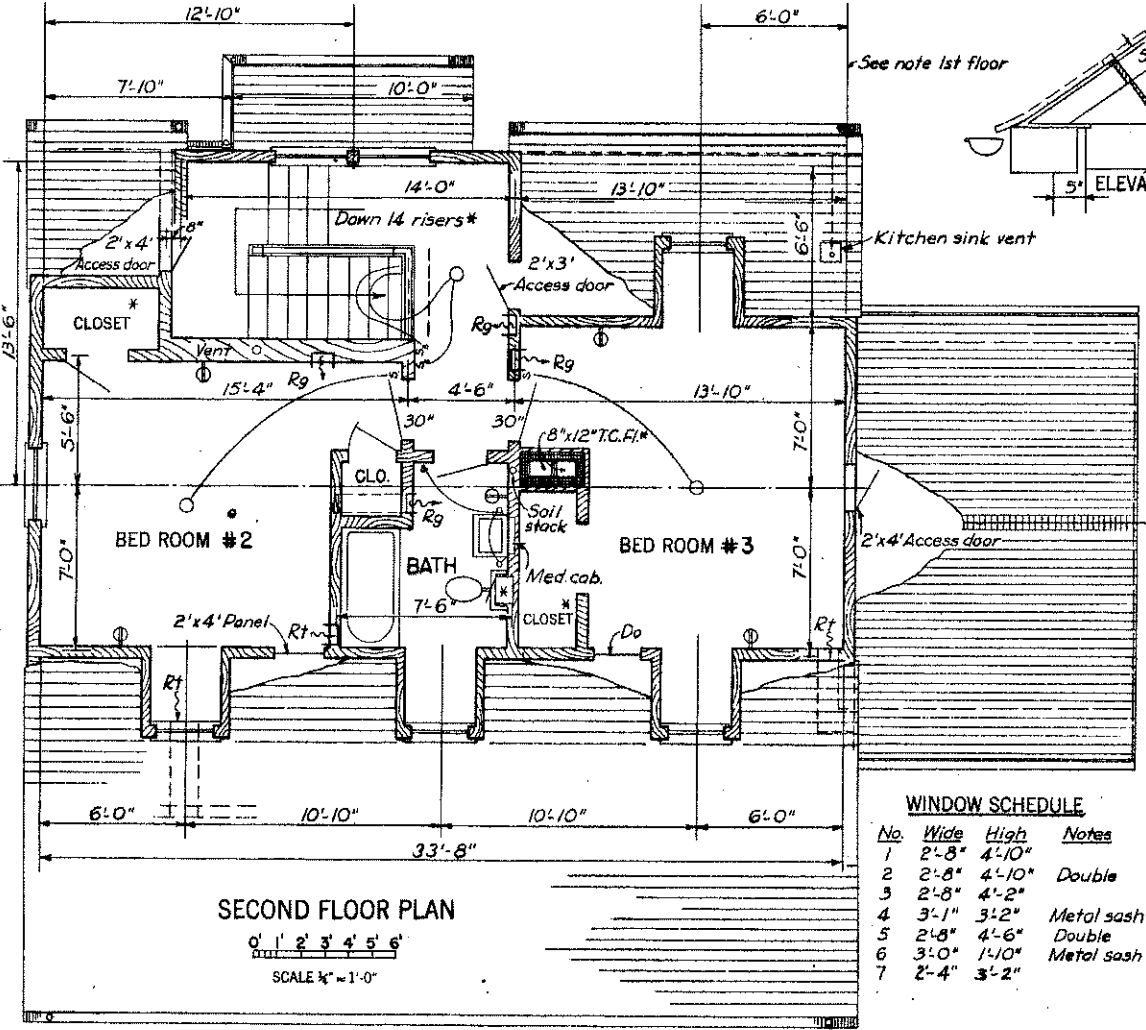
PERSPECTIVE

PLUMBING FIXTURES

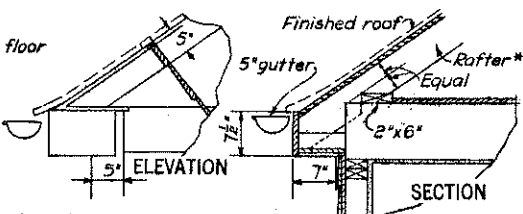
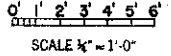
| Fixture | Size | Fittings, etc. |
|----------------------------|-----------------------------------|------------------------|
| Tub | 30" x 60" | Shower over |
| Basins | 22" x 18" | Mixing - Single faucet |
| W.C.'s | 29" | Low tank |
| Sink | 18" x 32" | Mixing - Swing faucet |
| Lau. Trays | 24" x 48" | Flat rim - " |
| Shower | 32" x 32" | Enam. Steel |
| Hot water tank = 72 gallon | | |
| 2 Med. cab's | 18" x 24" with two light brackets | |



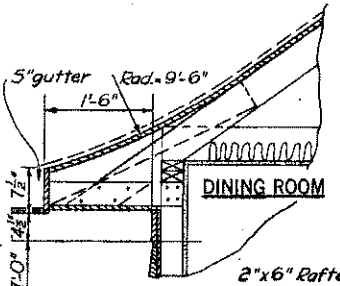
WORK ROOM CABINETS*
For construction details see kitchen cabinet details.



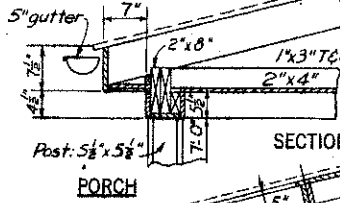
SECOND FLOOR PLAN



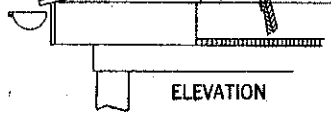
REAR CORNICE



SECTION



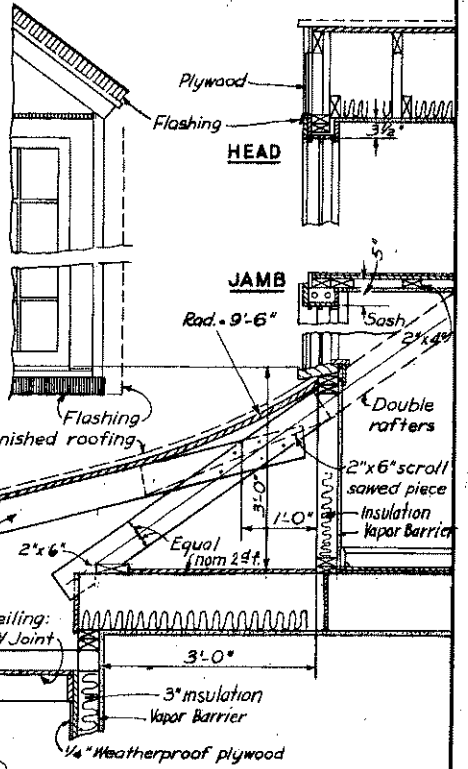
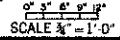
PORCH



ELEVATION

CORNICES, ROOF CURVES, AND DORMERS

All trim 1/4" thick



WINDOW SCHEDULE

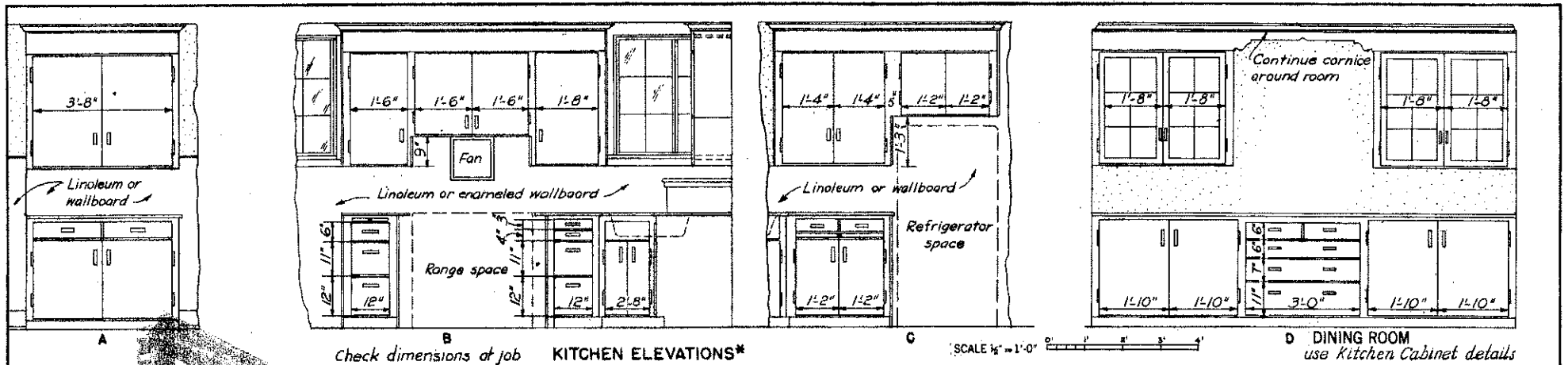
| No. | Wide | High | Notes |
|-----|-------|--------|------------|
| 1 | 2'-8" | 4'-10" | |
| 2 | 2'-8" | 4'-10" | Double |
| 3 | 2'-8" | 4'-2" | |
| 4 | 3'-1" | 3'-2" | Metal sash |
| 5 | 2'-8" | 4'-6" | Double |
| 6 | 3'-0" | 1'-10" | Metal sash |
| 7 | 2'-4" | 3'-2" | |

*SEE DETAILS, sheets 4, 5, & elsewhere

COOPERATIVE EXTENSION WORK IN
AGRICULTURE AND HOME ECONOMICS
STATE OF NORTH DAKOTA
NORTH DAKOTA AGRICULTURAL COLLEGE
AND
UNITED STATES DEPARTMENT OF AGRICULTURE COOPERATING

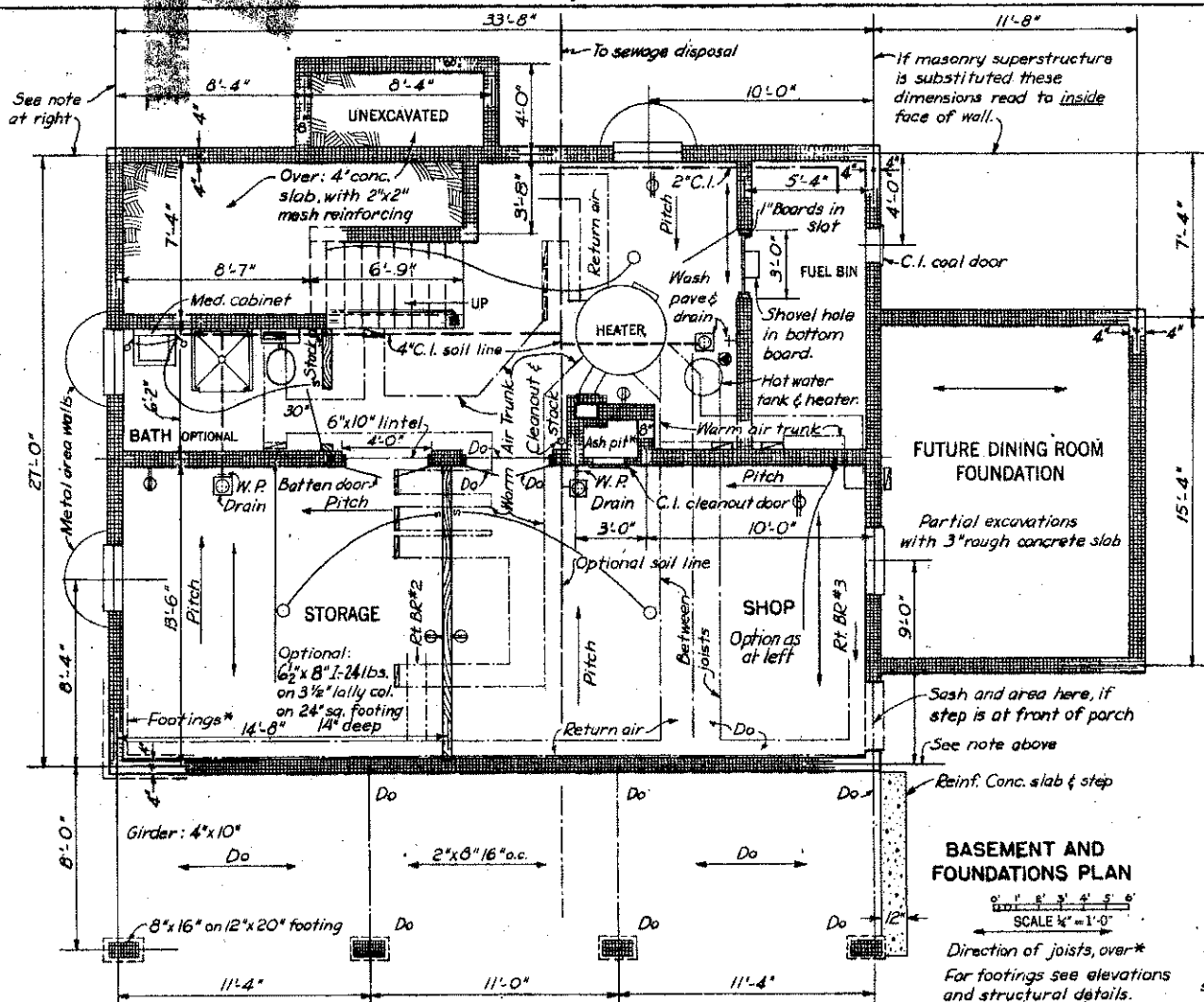
FARMHOUSE PLAN

USDA EX. 7017 SHEET 2 OF 5

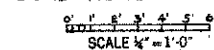


Check dimensions at job **KITCHEN ELEVATIONS***

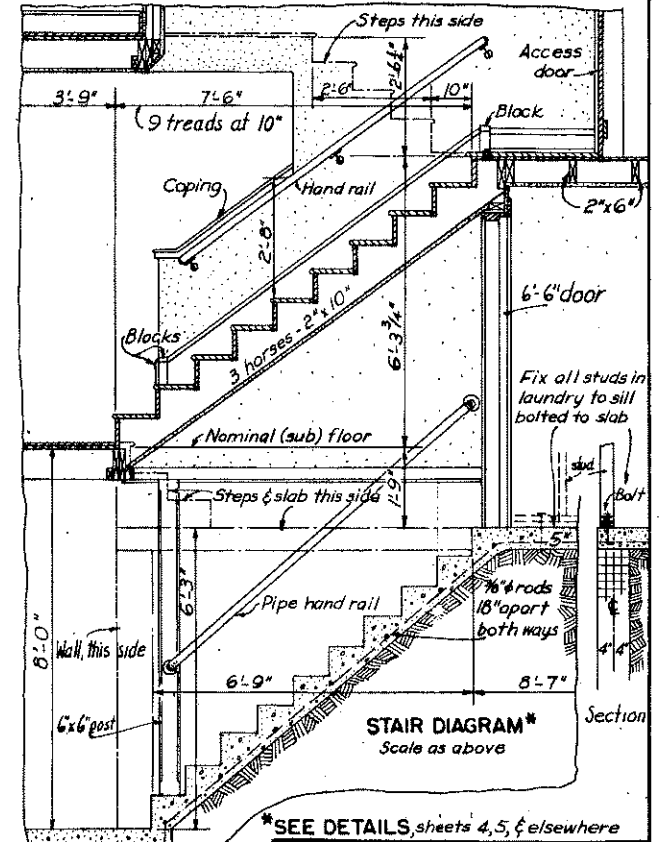
D DINING ROOM
use Kitchen Cabinet details



BASEMENT AND FOUNDATIONS PLAN



Direction of joists, over*
For footings see elevations and structural details.



STAIR DIAGRAM*
Scale as above

*SEE DETAILS, sheets 4, 5, & elsewhere

Duct & furnace sizes to be determined by contractor. Indicated on the plans is a warm air, forced circulation system with rectangular section trunk & branch ducts to risers; registers, where shown to be 6'-8" above floor, air returns where shown to be at or in floor and lead back to heater; see above. Steam or hot water system may be substituted.

COOPERATIVE EXTENSION WORK IN AGRICULTURE AND HOME ECONOMICS
STATE OF NORTH DAKOTA
NORTH DAKOTA AGRICULTURAL COLLEGE
AND
UNITED STATES DEPARTMENT OF AGRICULTURE COOPERATING

FARMHOUSE PLAN

USDA EX. 7017 SHEET 3 OF 5

SYMBOLS USED ON DRAWINGS IN THIS SET

STRUCTURAL

--- Work above plan or this (near) side of Section.
--- below " other (far) " " "
*SEE DETAILS: For more directions on detail sheets or on plan sheets.

Da da Ditto: Same as shown directly above or at left

PLAN

--- Optional Masonry, Brick, Block, Tile, Concrete.

--- Frame Walls & Partitions.

--- Metal Casements, --- Double Hung Windows

SECTION

--- Wood, --- Masonry, --- Concrete, --- Earth,

--- Insulations, T.C.F.L. Terra Cotta Flue Linings, --- Center Line.

ELECTRICAL

--- Ceiling Light, --- Convenience Outlet, --- Switch, --- 3 Ways

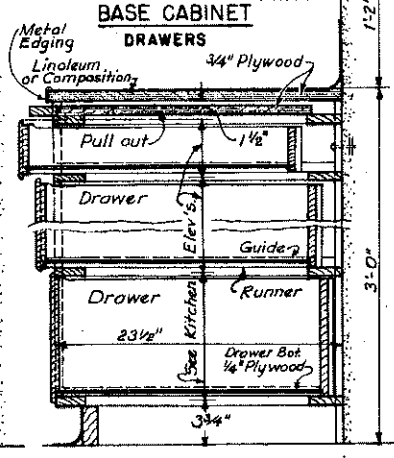
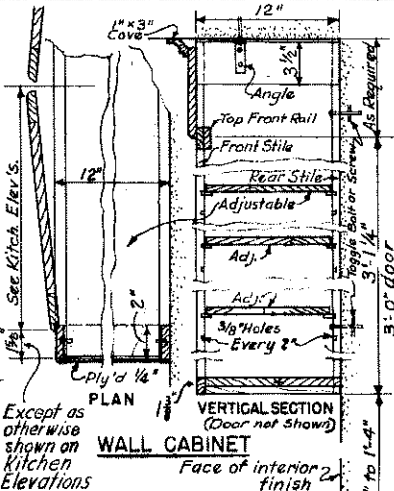
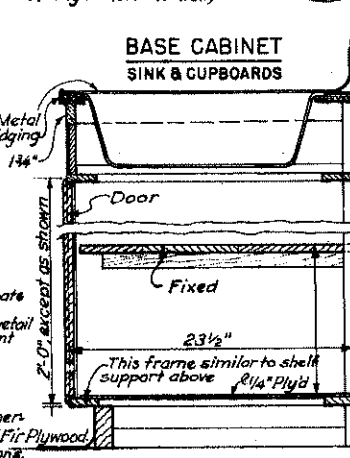
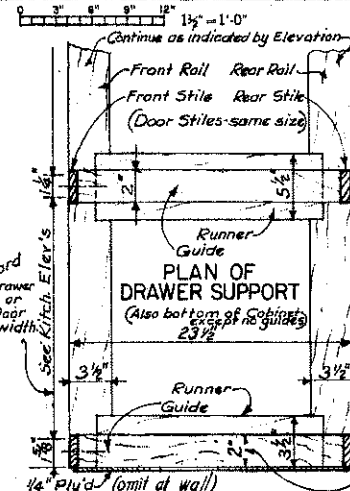
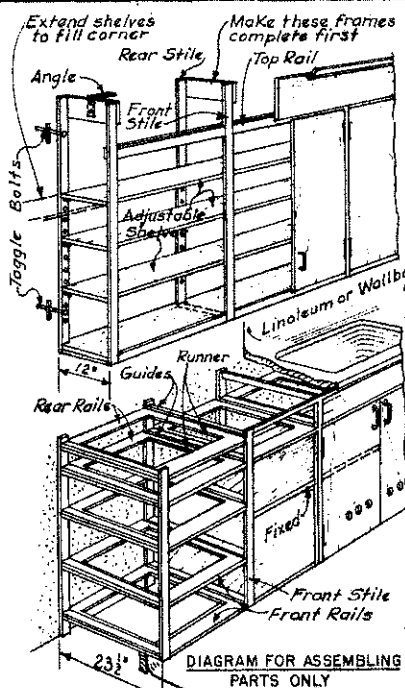
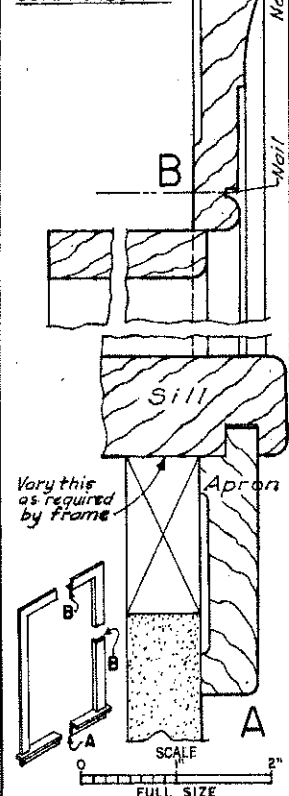
HEATING

--- Warm Air Register, --- At Air Return, Wall

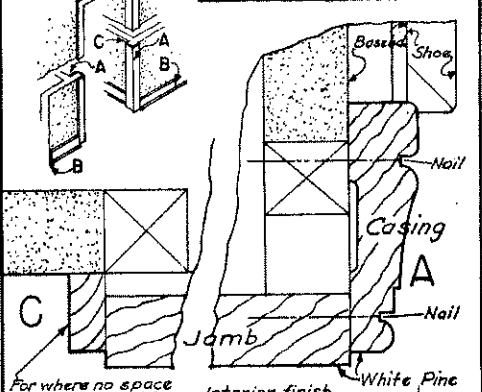
--- Floor Riser Duct

WINDOW TRIM

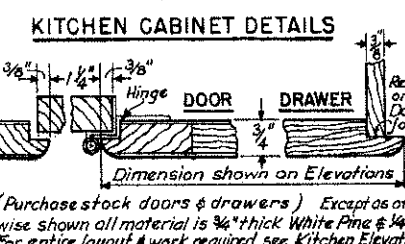
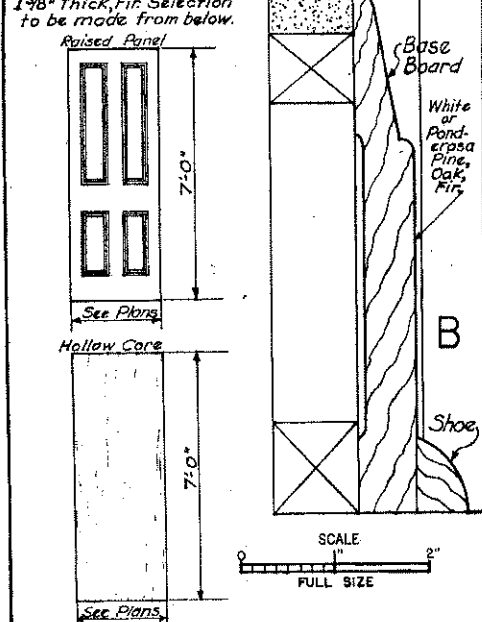
(White Pine)
This Casing for All Double-Hung & for Casement Sash in Frame walls
See exterior detail sheets



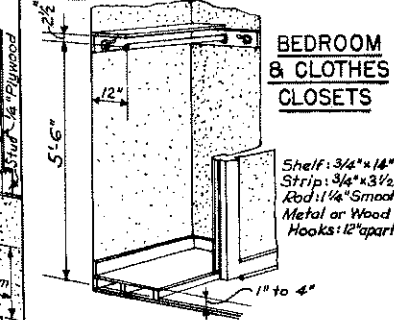
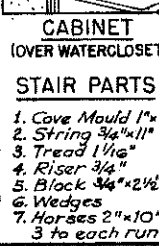
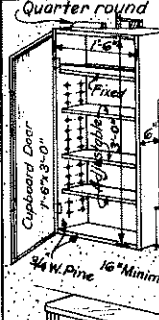
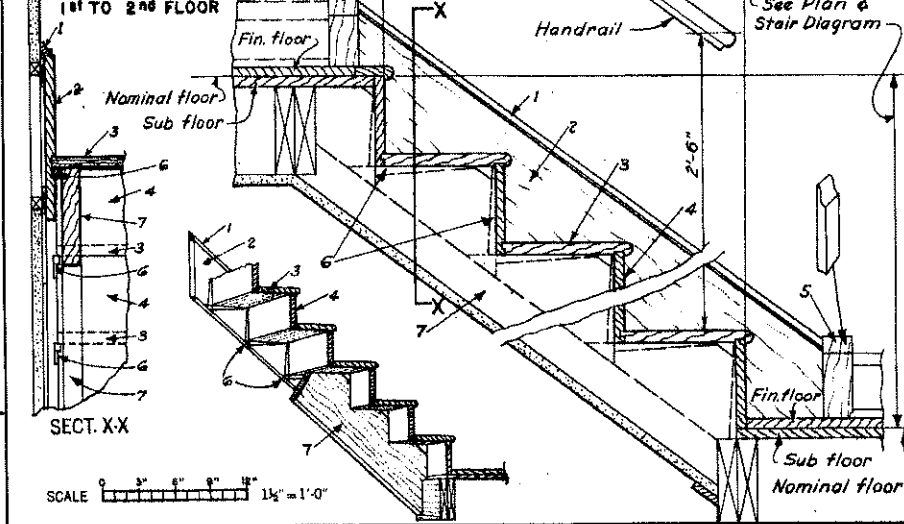
INTERIOR DOOR TRIM & BASEBOARD



INTERIOR DOORS



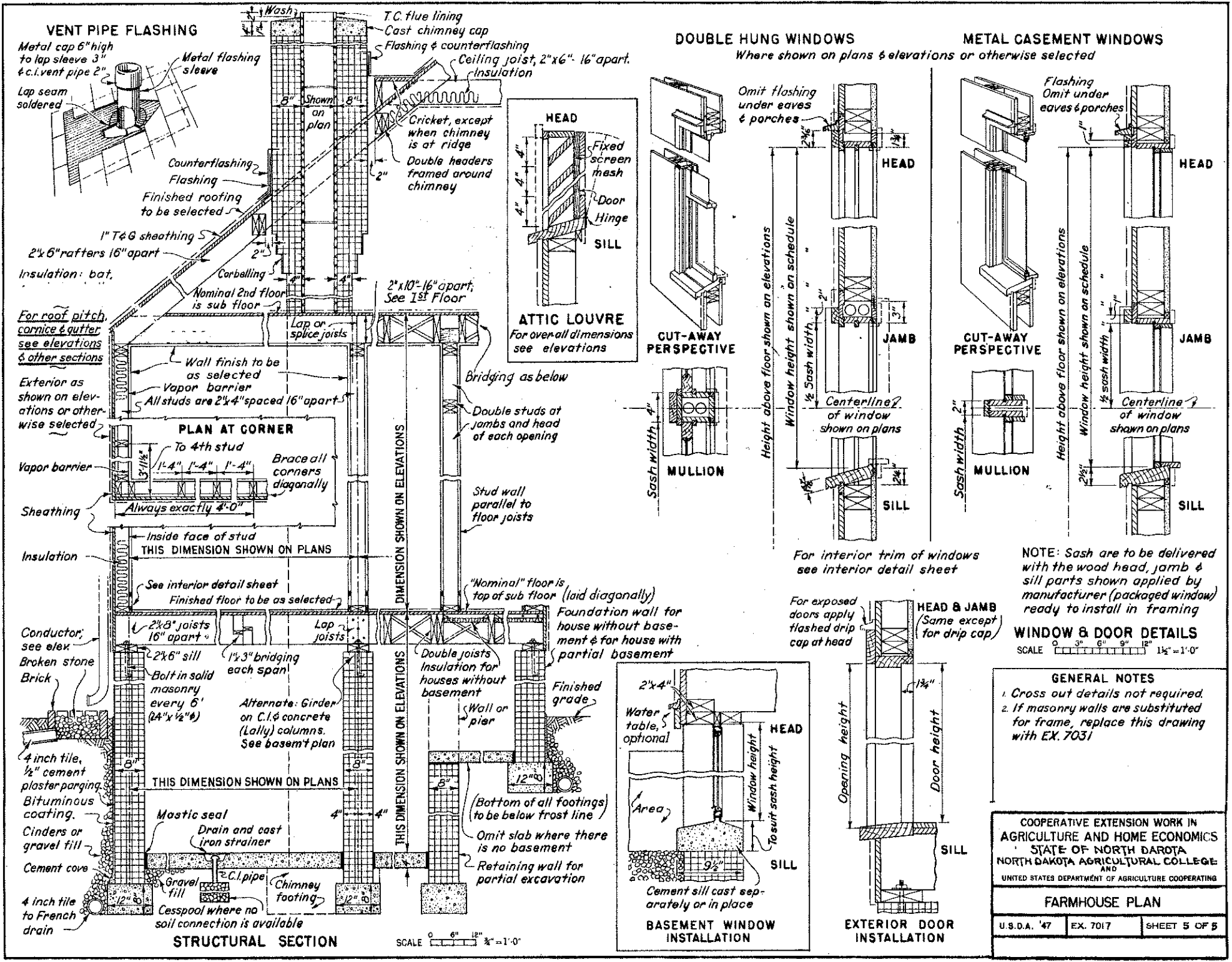
STAIR DETAILS



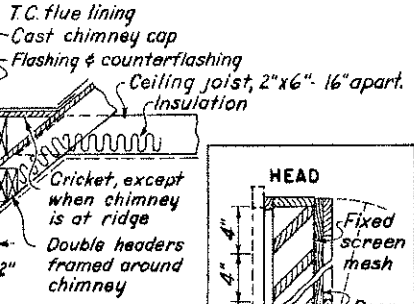
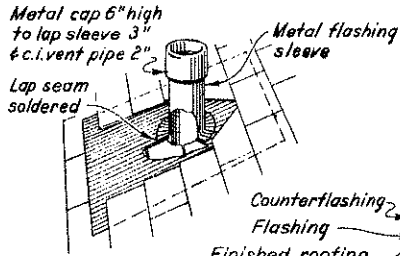
COOPERATIVE EXTENSION WORK IN AGRICULTURE AND HOME ECONOMICS
STATE OF NORTH DAKOTA
NORTH DAKOTA AGRICULTURAL COLLEGE
UNITED STATES DEPARTMENT OF AGRICULTURE COOPERATING

FARMHOUSE PLAN

U.S.D.A. '47 EX. 7017 SHEET 4 OF 5

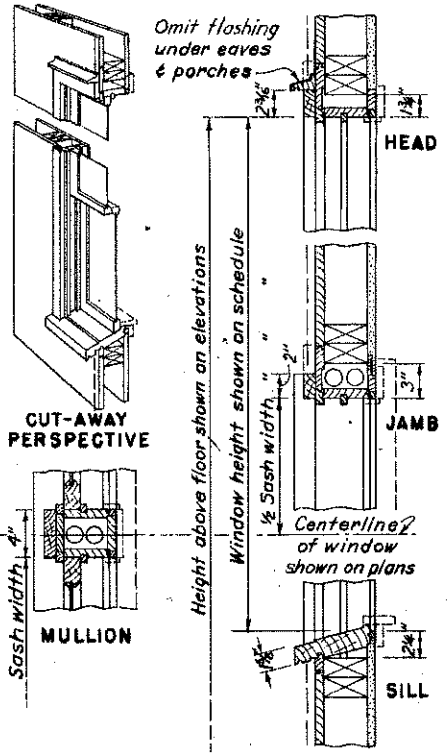


VENT PIPE FLASHING

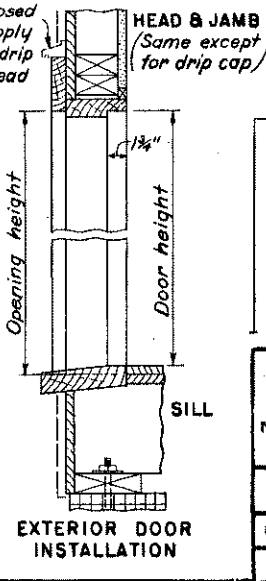
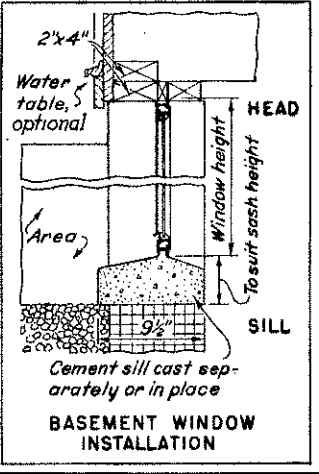
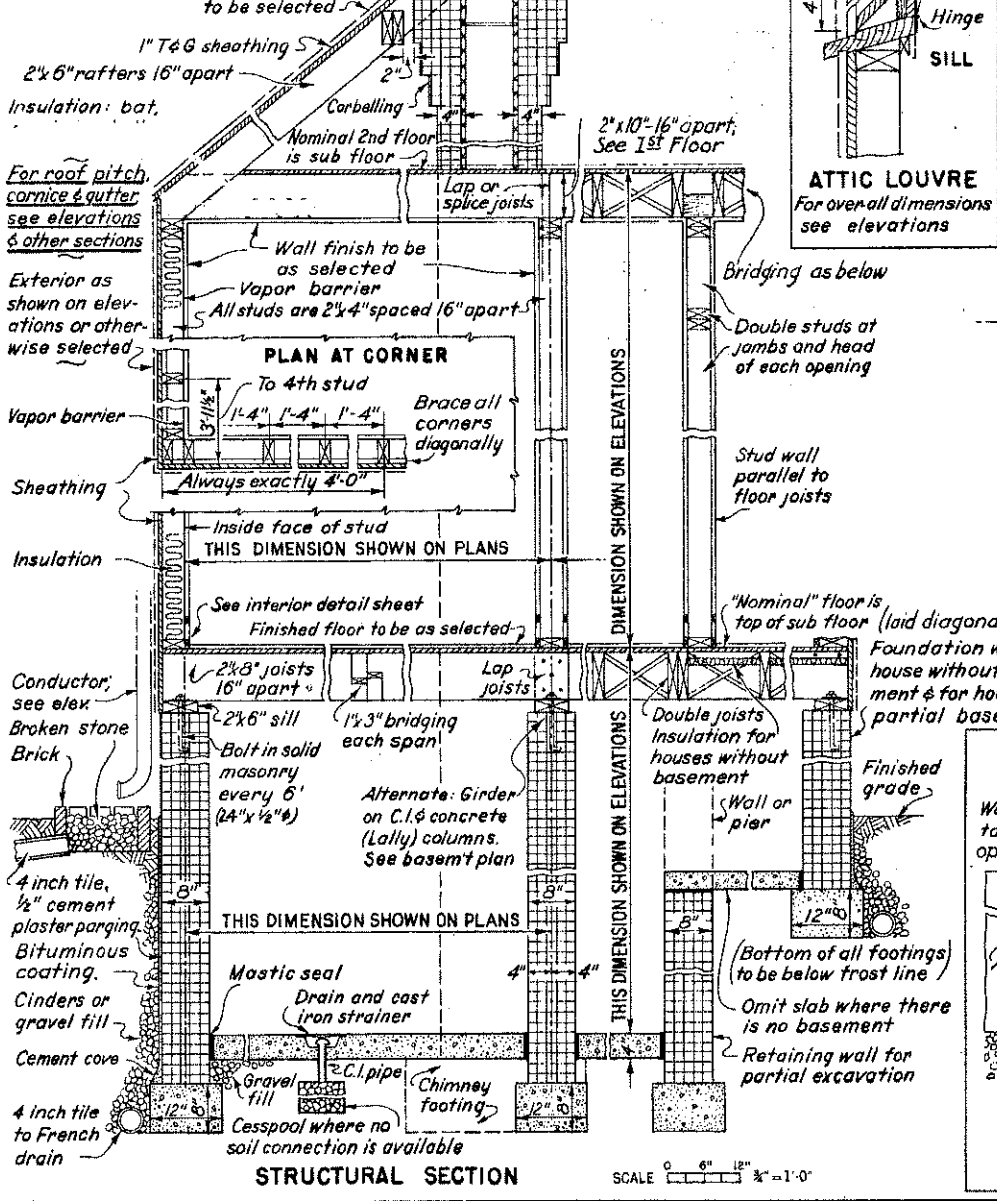
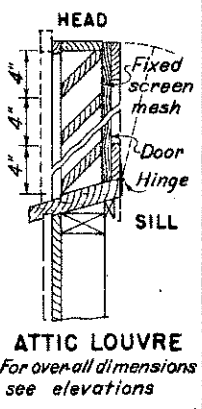
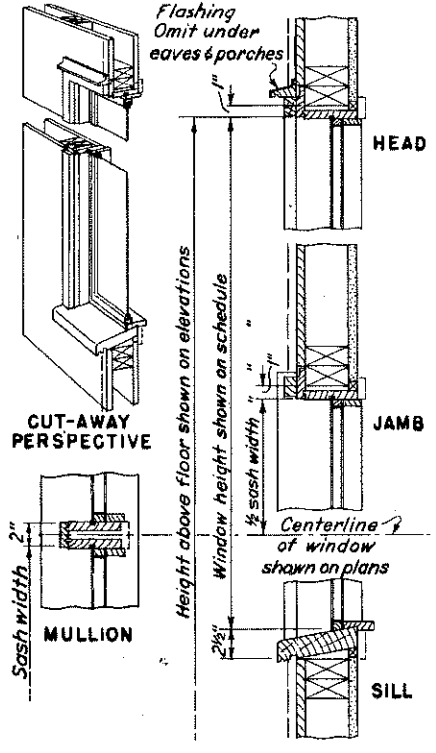


DOUBLE HUNG WINDOWS

Where shown on plans & elevations or otherwise selected



METAL CASEMENT WINDOWS



NOTE: Sash are to be delivered with the wood head, jamb & sill parts shown applied by manufacturer (packaged window) ready to install in framing

WINDOW & DOOR DETAILS
SCALE 0 3" 6" 9" 12" 1 1/2" = 1'-0"

GENERAL NOTES
1. Cross out details not required.
2. If masonry walls are substituted for frame, replace this drawing with EX. 7031