

- A. PLANNING CENTER** - Kitchen accounts, menus, telephone
- B. COOKING CENTER**
- (1) Serving dishes, pot lids, foods less frequently used at range, extra staple supplies
 - (2) Foods used at range (frequently)
- C. SERVING CENTER**
- (3) Good serving dishes
 - (4) Good dishes, glassware
 - (5) Drawers - napkins, hot pads, silver
 - (6) Towel cabinet
 - (7) Bread board
 - (8) Small utensils used first at range
 - (9) Metal-lined bread drawer
 - (10) Vertical files - serving trays, turkey platters
 - (11) Revolving wall cabinet - everyday dishes, dry cereals, condiments
 - (12) Revolving base cabinet - utensils used first at range & sink

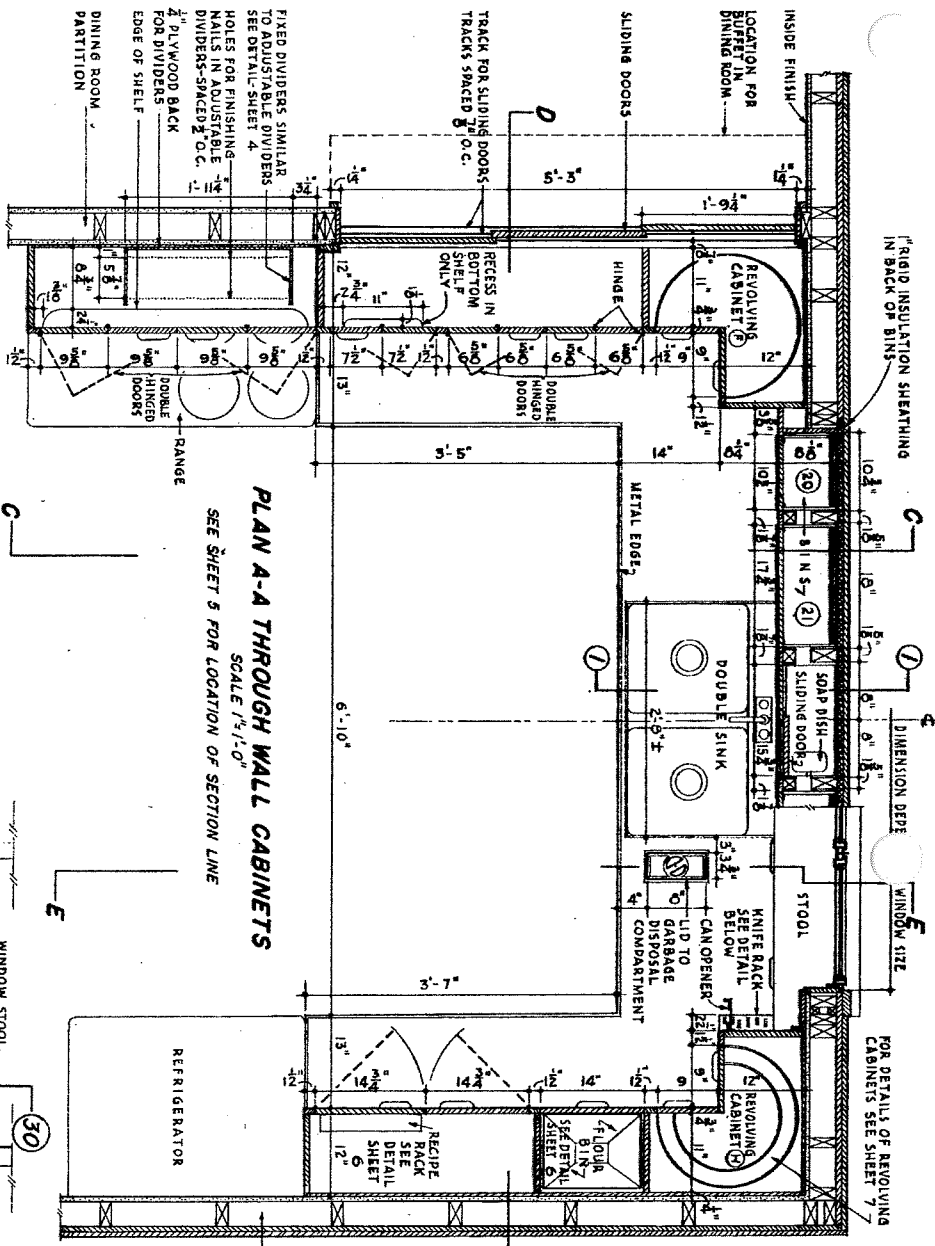
- D. DISHWASHING & VEGETABLE PREP. CENTER**
- (1) Citrus fruits & apple bins
 - (2) Towels & dish cloths
 - (3) Tin-lined storage for cakes & cookies
 - (4) Aprons
 - (5) Miscellaneous
 - (6) Cleaning supplies used at sink
 - (7) Double-bowl sink
 - (8) Dish cloth rack, paper disposal, temporary storage jars & cans, surplus cleaning supplies
 - (9) Potato & onion bins
 - (10) Garbage
 - (11) Tools
 - (12) Wrapping papers - paper sacks
 - (13) Paper towels & can opener
 - (14) Knife rack

- E. MIXING CENTER**
- (1) Revolving corner wall cabinet - staple supplies
 - (2) Vertical file - seldom-used baking pans
 - (3) Flour storage - 40 pounds
 - (4) Flour bin
 - (5) Revolving corner base cabinet - saucepans & utensils used at mixing center, sink
 - (6) Mixing bowls, measuring cups, casseroles, baking pans
 - (7) Sugar
 - (8) Other sugars, flours
 - (9) Pullout boards
 - (10) Small, frequently-used utensils
 - (11) Picnic & school lunch supplies
 - (12) Miscellaneous
 - (13) Storage refrigerator dishes, covers
 - (14) Lap board
 - (15) Recipe books, files
 - (16) Vertical file - seldom-used baking pans
- F. DINING**
- (17) Storage shelves - toaster, waffle maker
- G. KITCHEN UTILITY CABINET**
- Broom, dust pan, kitchen stool, apron, and miscellaneous.

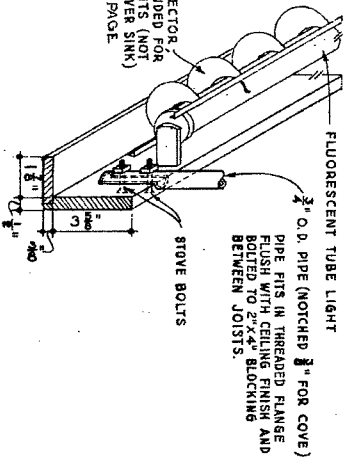
COOPERATIVE EXTENSION WORK IN
 AGRICULTURE AND HOME ECONOMICS
 STATE OF NORTH DAKOTA
 NORTH DAKOTA AGRICULTURAL COLLEGE
 AND HOME ECONOMICS DEPARTMENT

UNITED STATES DEPARTMENT OF AGRICULTURE COOPERATIVE

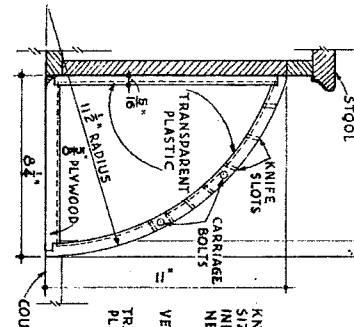
USDA '48 Ex 7100 SHEET 1 of 7
 DESIGNED BY BUREAU OF HUMAN NUTRITION
 AND HOME ECONOMICS USDA



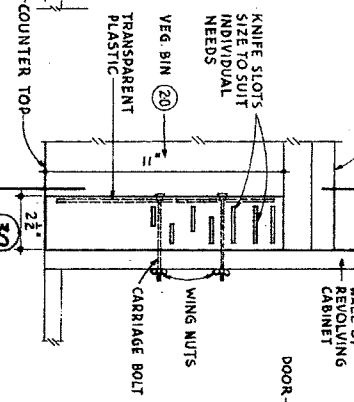
LIGHT COVE DETAIL
SCALE 3/4" = 1'-0"



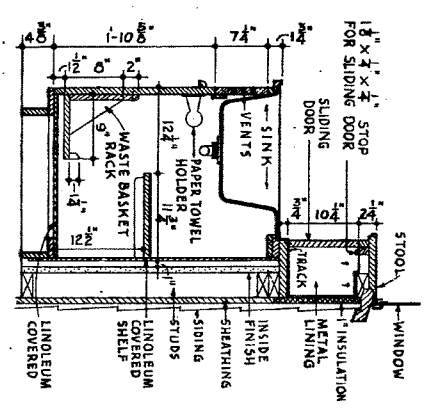
SECTION 30-30
SCALE 3/4" = 1'-0"



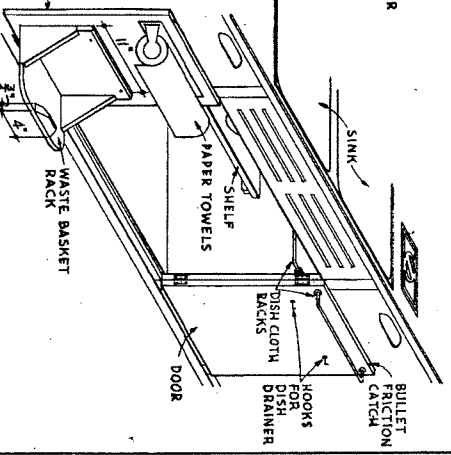
FRONT ELEVATION OF KNIFE RACK
SCALE 3/4" = 1'-0"



SECTION 1-1 THROUGH SINK CABINET
SCALE 1/4" = 1'-0"



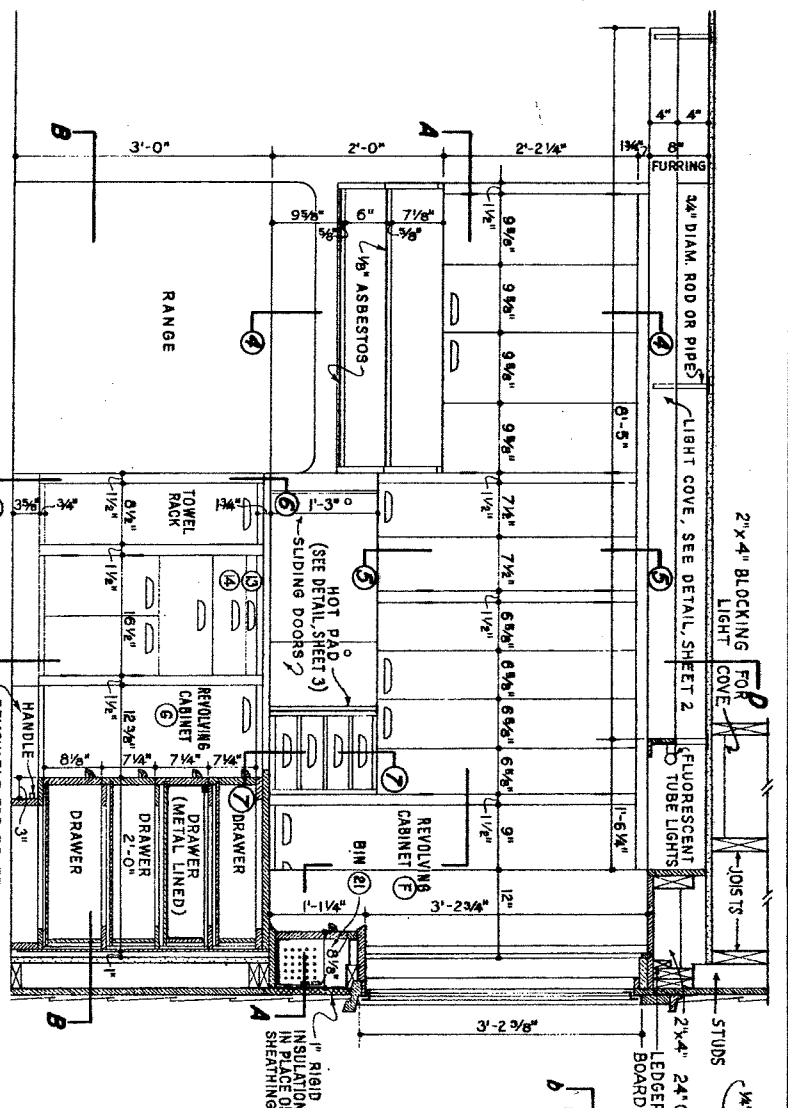
DETAILS OF SINK CABINET
SCALE 1/4" = 1'-0"



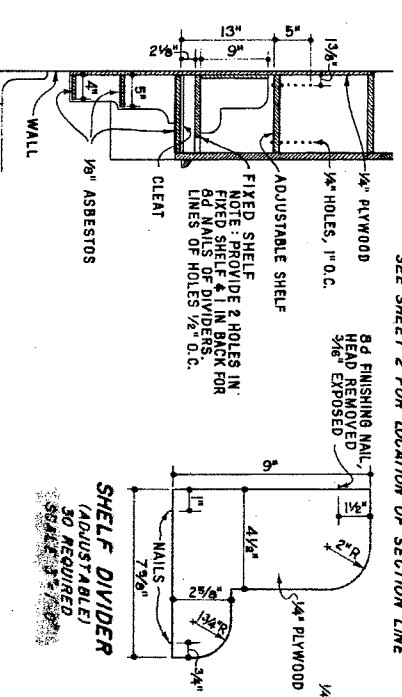
COOPERATIVE EXTENSION WORK IN AGRICULTURE AND HOME ECONOMICS
STATE OF NORTH DAKOTA
NORTH DAKOTA AGRICULTURAL COLLEGE
AND
UNITED STATES DEPARTMENT OF AGRICULTURE COOPERATING

FUNCTIONAL U KITCHEN

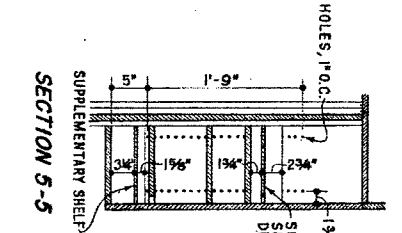
USDA 48 EX 7100 SHEET 2 OF 7
DESIGNED BY BUREAU OF HUMAN NUTRITION AND HOME ECONOMICS U.S.D.A.



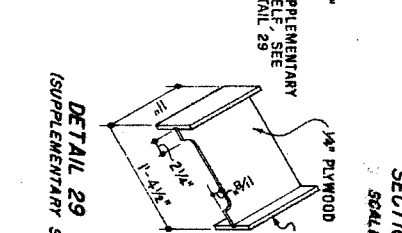
SECTION C-C SHOWING ELEVATION OF COOKING AND SERVING CENTERS
SEE SHEET 2 FOR LOCATION OF SECTION LINE



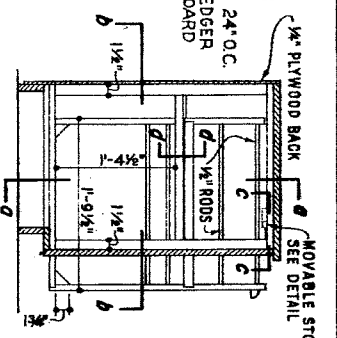
SECTION 4-4



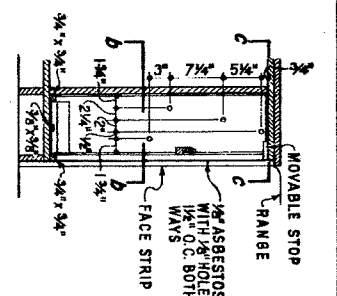
SECTION 5-5



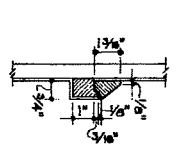
DETAIL 29
(SUPPLEMENTARY SHELVES)



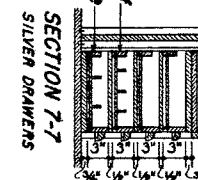
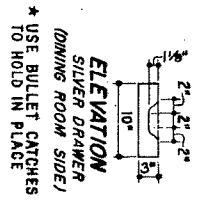
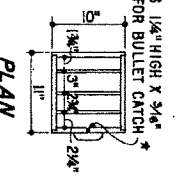
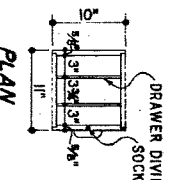
SECTION 6-6
(TOWEL RACK)



SECTION 6-0-0



SECTION 6-d-d
SCALE 3/4\"/>

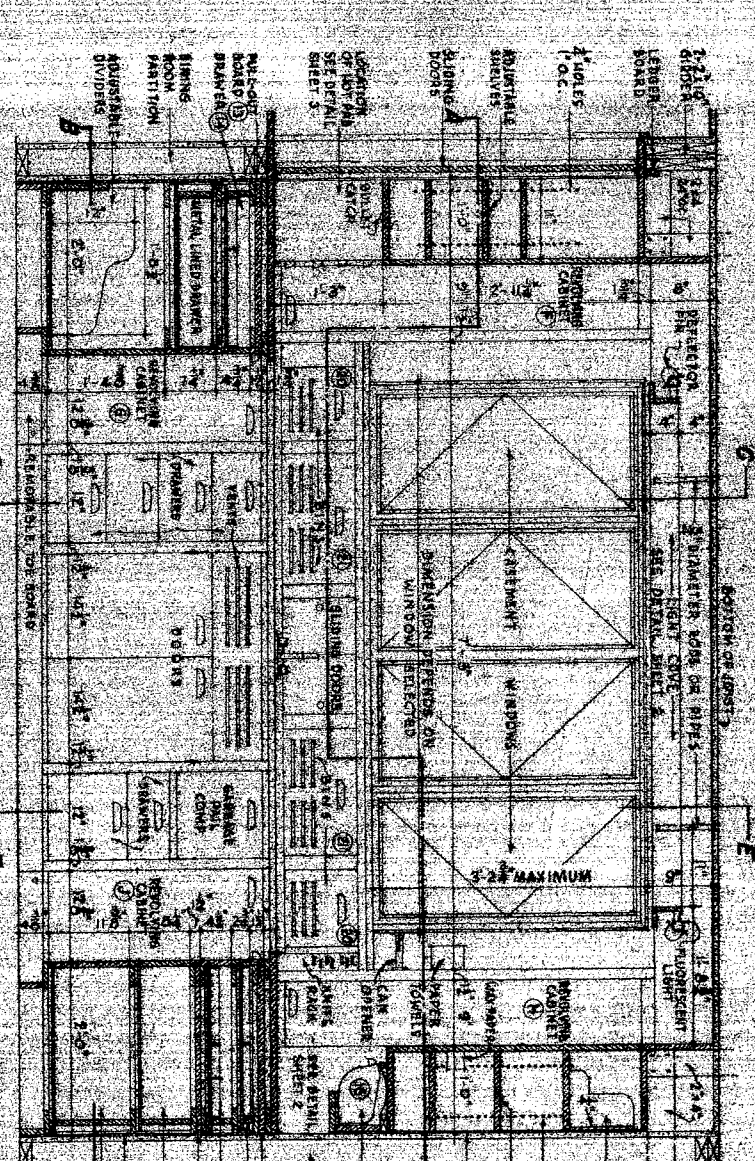


COOPERATIVE EXTENSION WORK IN
AGRICULTURE AND HOME ECONOMICS
STATE OF NORTH DAKOTA
NORTH DAKOTA AGRICULTURAL COLLEGE
AND
UNITED STATES DEPARTMENT OF AGRICULTURE COOPERATING

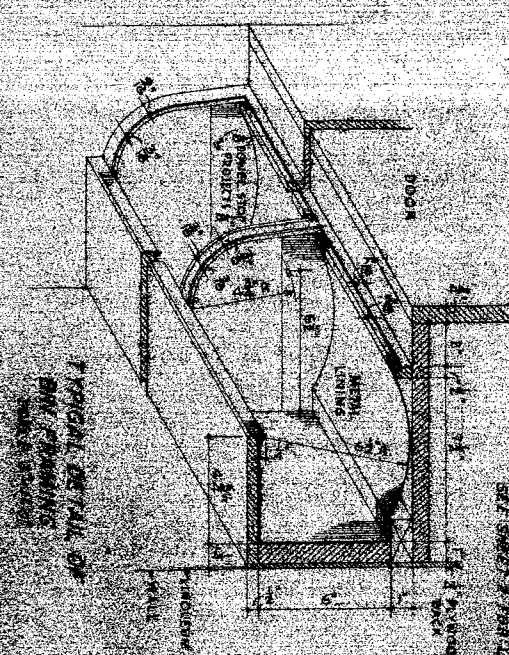
FUNCTIONAL U KITCHEN

USDA 148 EX. 7100 SHEET 4 OF 7
DESIGNED BY BUREAU OF HUMAN NUTRITION
AND HOME ECONOMICS U.S.D.A.

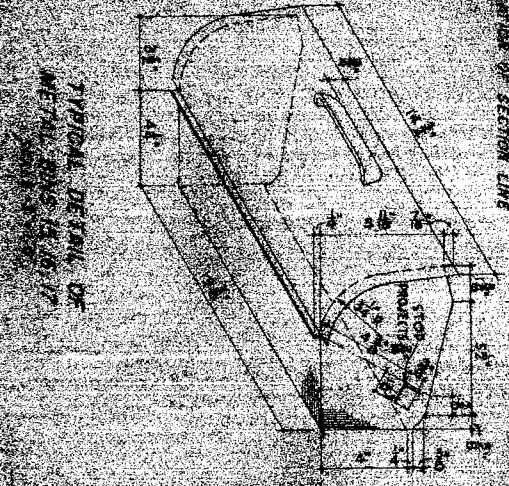
Fig. 2



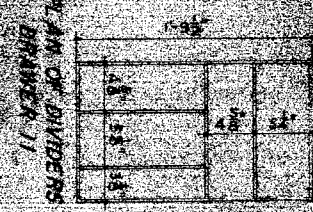
SECTION 8-D
SHOWING ELEVATION OF DISH-WASHING AND VEGETABLE PREPARATION CENTER



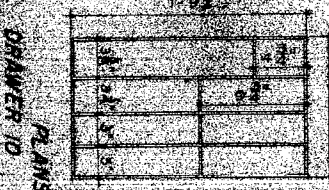
TYPICAL DETAIL OF
DIVIDER



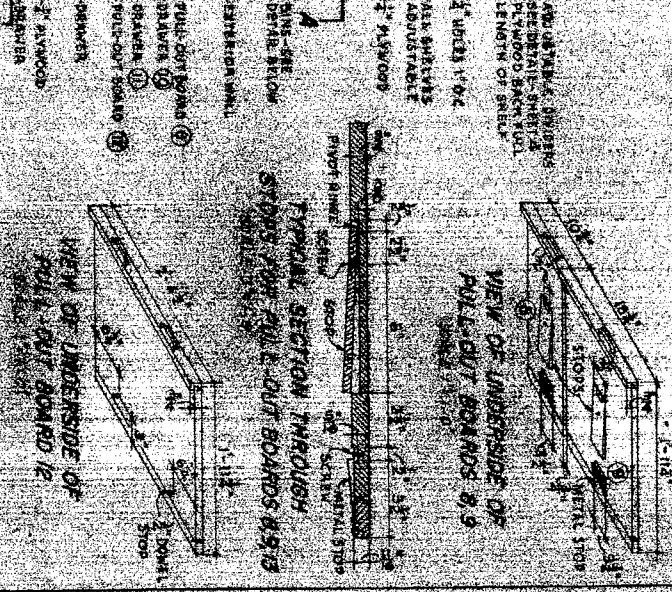
TYPICAL DETAIL OF
DIVIDER



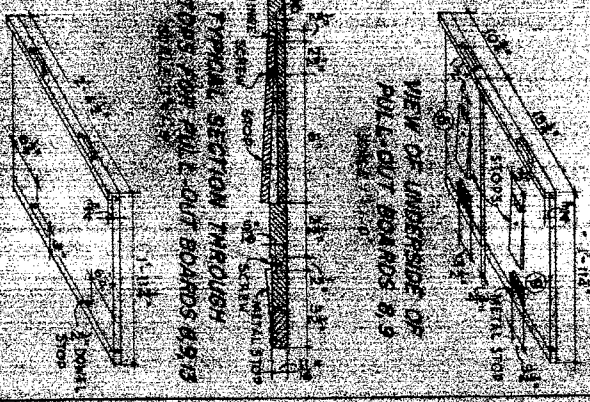
PLAN OF DIVIDERS
DRAWING 11



PLAN OF DIVIDERS
DRAWING 10

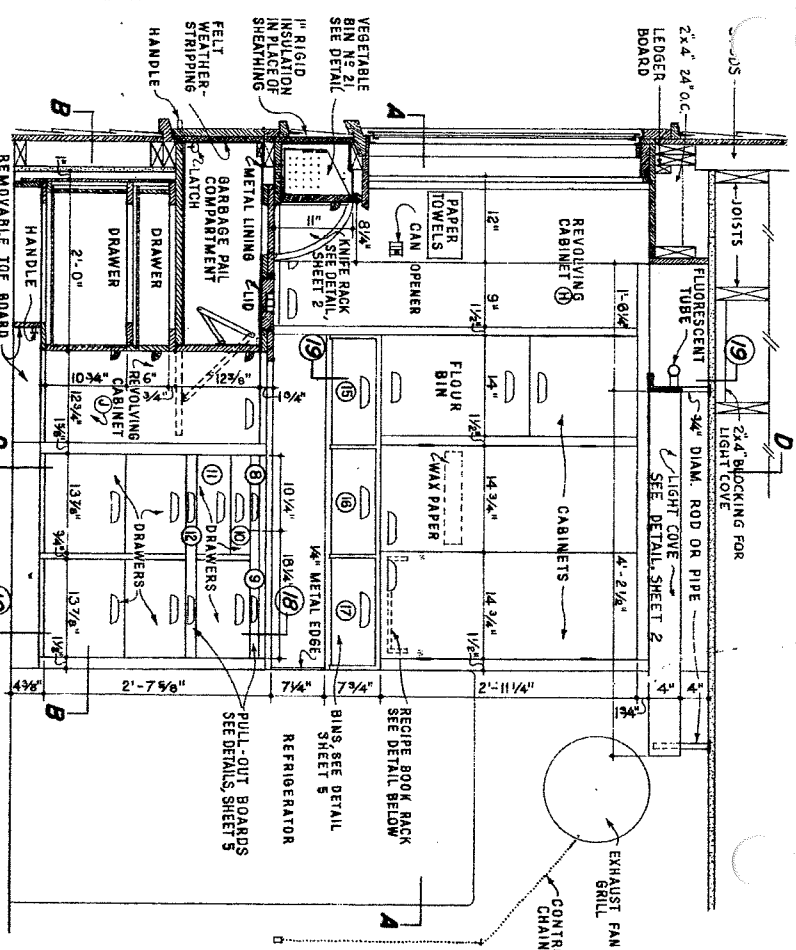


VIEW OF UNDERSIDE OF
PULL-OUT BOARD

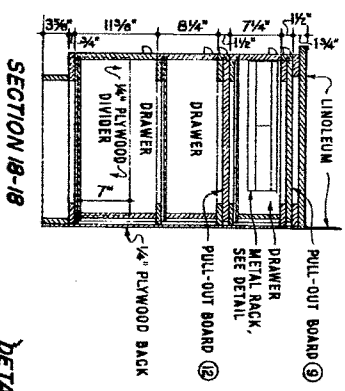


TYPICAL SECTION THROUGH
STUDS FOR PULL-OUT BOARD

COOPERATIVE EXTENSION WORK IN
AGRICULTURE AND HOME ECONOMICS
STATE OF NORTH DAKOTA
NORTH DAKOTA AGRICULTURAL COLLEGE
AND
UNITED STATES DEPARTMENT OF AGRICULTURE
USDA 4816x 7100 1-5-40 8 P.T.
DESIGNED BY BUREAU OF HOME ECONOMICS
AND HOME ECONOMICS



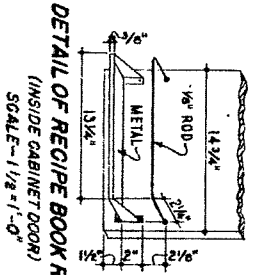
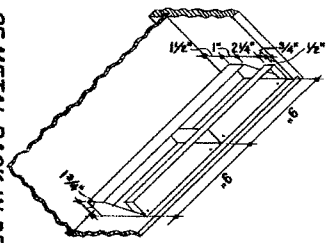
SECTION E-E SHOWING ELEVATION OF MIXING CENTER
SEE SHEET 2 FOR LOCATION OF SECTION LINE



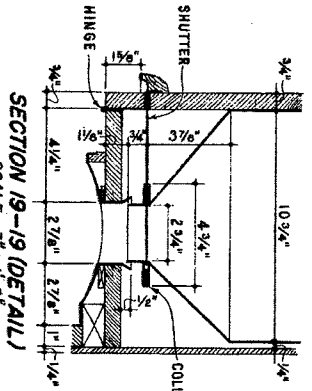
SECTION B-B

GENERAL NOTES:
CABINET FRAMES TO BE OF 3/4" PINE STOCK, CABINET DOORS AND COUNTER TOP MAY BE OF 3/4" PINE OR PLYWOOD, DRAWER FRONTS AND SHELVES TO BE 3/4" PINE. ALL OTHER PARTS TO BE 3/4" STOCK EXCEPT AS OTHERWISE NOTED.
ALL CABINET AND GARBAGE PAIL COMPARTMENT DOORS TO BE EQUIPPED WITH BULLET PROTECTION GATHERERS.

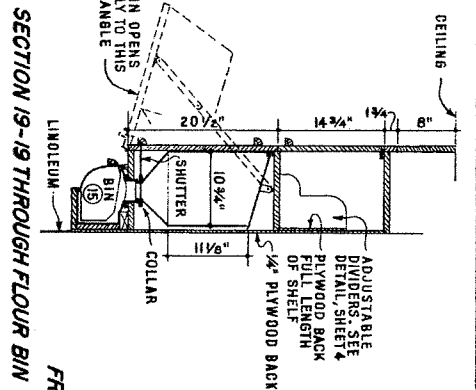
DETAIL OF METAL RACK IN DRAWER
SCALE - 1/2" = 1'-0"



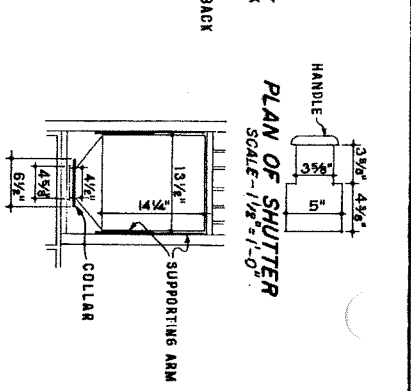
DETAIL OF RECIPE BOOK RACK (INSIDE CABINET DOOR)
SCALE - 1/2" = 1'-0"



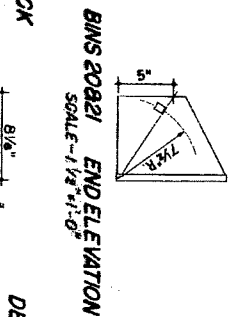
SECTION 19-19 (DETAIL)
SCALE - 3/8" = 1'-0"



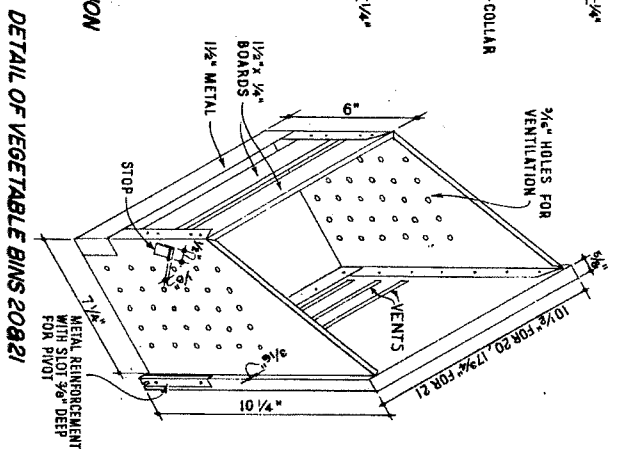
SECTION 19-19 THROUGH FLOUR BIN
SCALE - 1/2" = 1'-0"



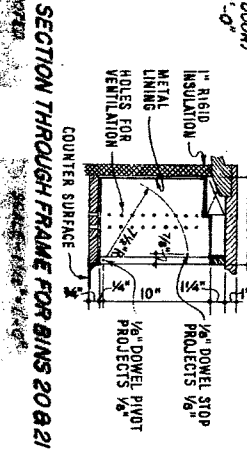
FRONT ELEVATION OF FLOUR BIN (DOOR REMOVED SHUTTER CUT OFF.)
SCALE - 1/2" = 1'-0"



BINS 20&21 END ELEVATION
SCALE - 1/2" = 1'-0"



DETAIL OF VEGETABLE BINS 20&21
SCALE - 3/8" = 1'-0"

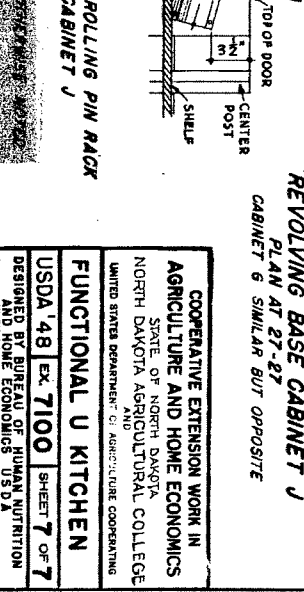
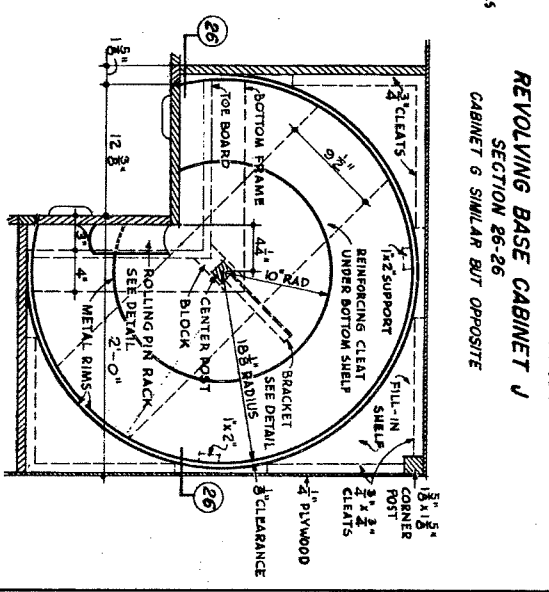
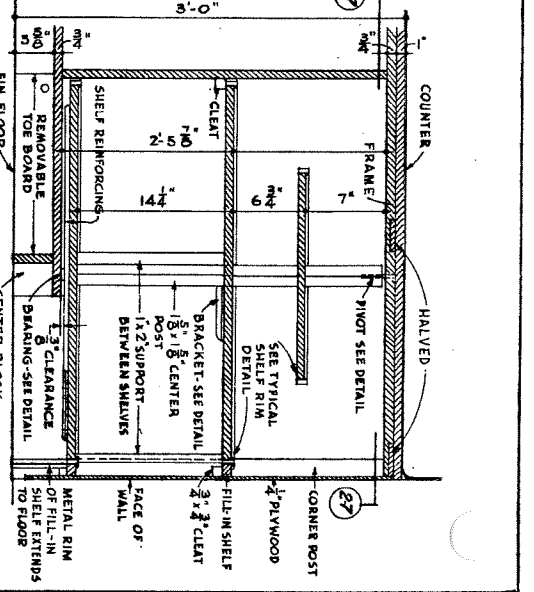
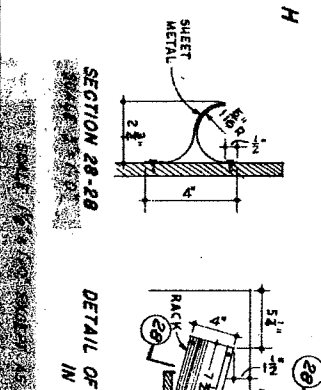
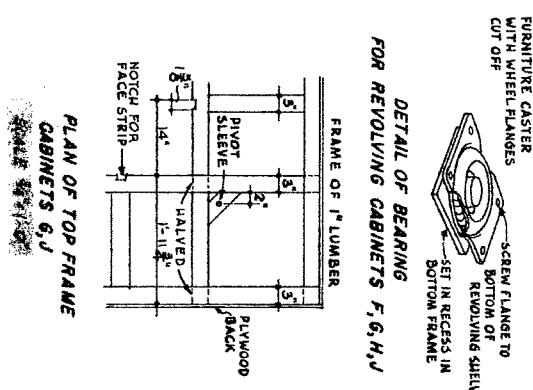
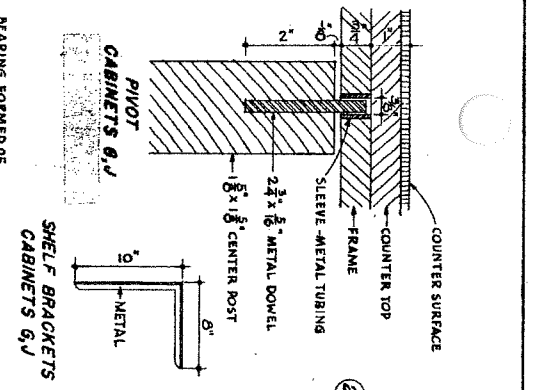
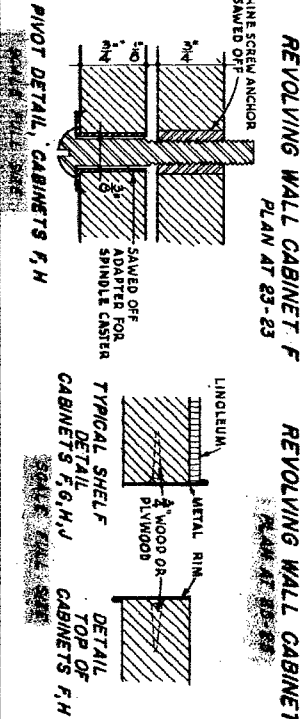
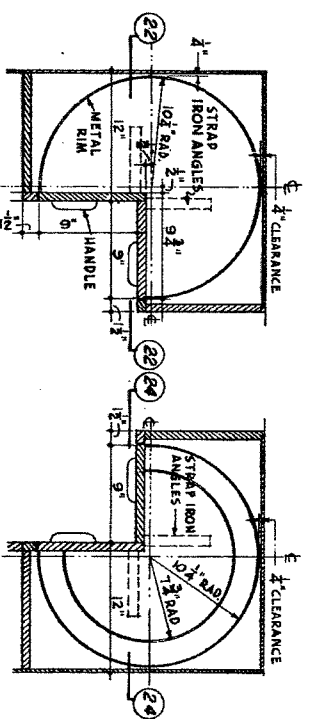
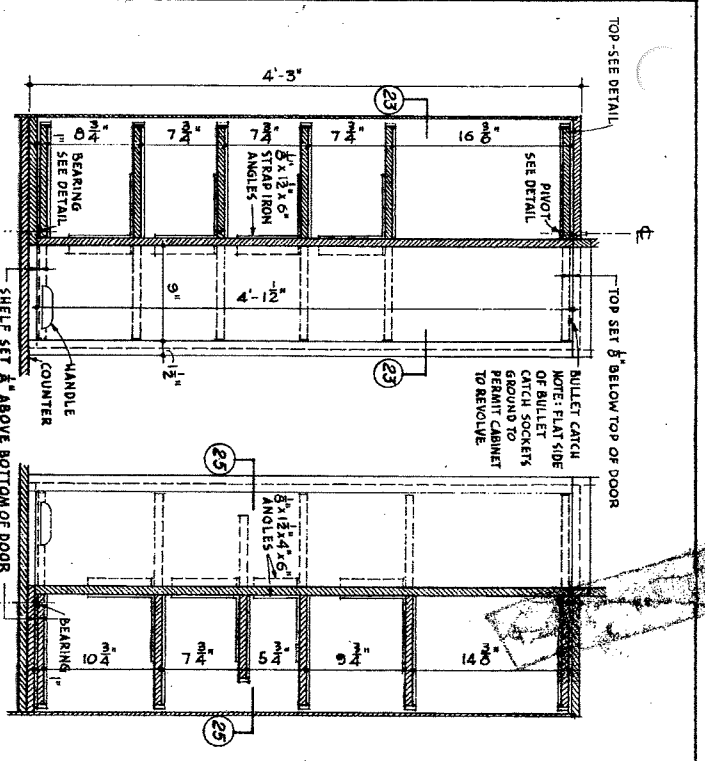


SECTION THROUGH FRAME FOR BINS 20&21
SCALE - 3/8" = 1'-0"

COOPERATIVE EXTENSION WORK IN AGRICULTURE AND HOME ECONOMICS STATE OF NORTH DAKOTA NORTH DAKOTA AGRICULTURAL COLLEGE AND UNITED STATES DEPARTMENT OF AGRICULTURE COOPERATING

FUNCTIONAL U KITCHEN

USDA 481 EX. 7100 SHEET 6 OF 7
DESIGNED BY BUREAU OF HUMAN NUTRITION AND HOME ECONOMICS USDA



COOPERATIVE EXTENSION WORK IN
 AGRICULTURE AND HOME ECONOMICS
 STATE OF NORTH DAKOTA
 NORTH DAKOTA AGRICULTURAL COLLEGE
 UNITED STATES DEPARTMENT OF AGRICULTURE COOPERATING

FUNCTIONAL U KITCHEN

USDA 48 EX. 7100 SHEET 7 OF 7
 DESIGNED BY BUREAU OF HUMAN NUTRITION
 AND HOME ECONOMICS USDA