

CONSTRUCTION STEPS

1. STUDY PLANS AND DETAILS THOROUGHLY.
2. OUTLINE SPACE FOR REFRIGERATOR ON LEVEL CONCRETE FLOOR.
3. CONSTRUCT EXTERIOR WALLS AND FIT BY FASTENING IN PLACE TEMPORARILY.
4. FASTEN ANY TWO ADJACENT WALLS PERMANENTLY; REMOVE OTHER TWO.
5. CONSTRUCT ROOF, NAIL OR VAPOR-BARRIER PAPER ALLOWING 10" OVERHANG.
6. SET ROOF IN PLACE, FOLDING PAPER AROUND EDGES INTO ROOM.
7. PLACE AND FASTEN OTHER WALLS IN POSITION.
8. APPLY ASPHALT PAINT AND ONE LAYER OF VAPOR-BARRIER PAPER—ONE WALL AT A TIME. LAP PAPER & AT JOINTS USING SEAM FILLER UNDER OVERLAP; SEE DETAIL, SHEET B.
9. APPLY SECOND LAYER OF VAPOR-BARRIER PAPER; STAGGER SEAMS.
10. APPLY ASPHALT PAINT AND PAPER TO FLOOR AS IN STEPS 9 & 9.
11. LAY INSULATION ON FLOOR.
12. COVER INSULATION WITH WATER-PROOF PAPER OR ROOFING FELT.
13. BUILD CONCRETE FORMS FOR REFRIGERATOR FLOOR.
14. POUR CONCRETE AND ATTACH ANCHOR BOLTS FOR INTERIOR WALL PLATE.
15. BUILD INTERIOR FRAMING — AFTER CONCRETE IS THOROUGHLY SET.
16. INSTALL ELECTRICAL AND REFRIGERANT TUBING DUCTS.
17. INSULATE WALLS AND CEILING.
18. INSTALL INSIDE WALLS AND CEILING.
19. GALK, PLUMB, AND BOLT DOOR FRAMES IN PLACE.
20. HANG DOORS AND ADJUST LATCHES SO GASKETS WILL EXERT PRESSURE ALL AROUND.
21. HAVE REFRIGERATION EQUIPMENT AND WIRING INSTALLED.
22. INSTALL SHELTERS, WEAR RAIL, AND OTHER ACCESSORIES.
23. PAINT ALL WOODEN SURFACES WITH ALUMINUM PAINT. LEAVE DOORS OPEN UNTIL SURFACES ARE DRY.
24. PAINT SURFACES OF ALL CONCRETE FLOORS.

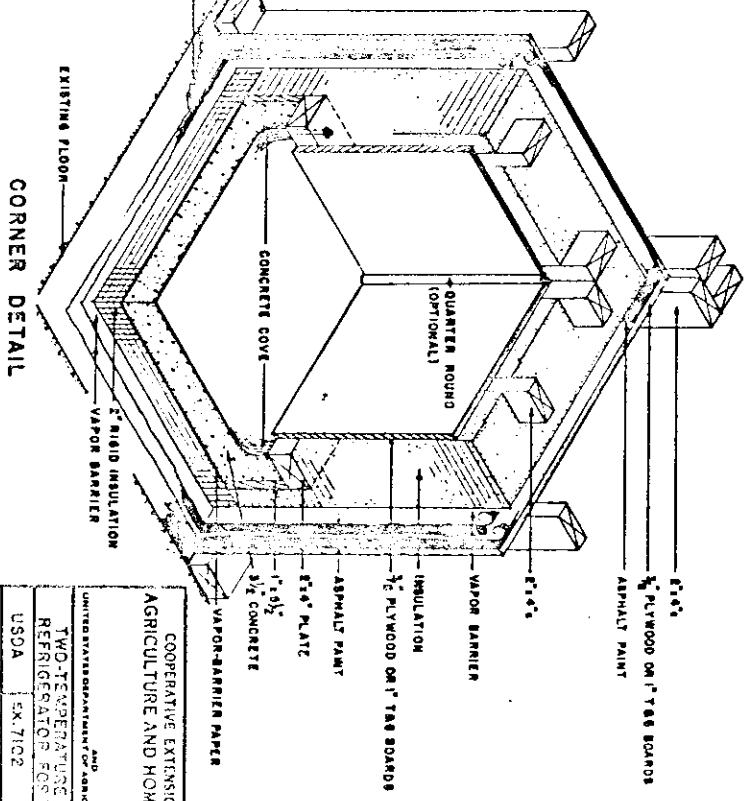
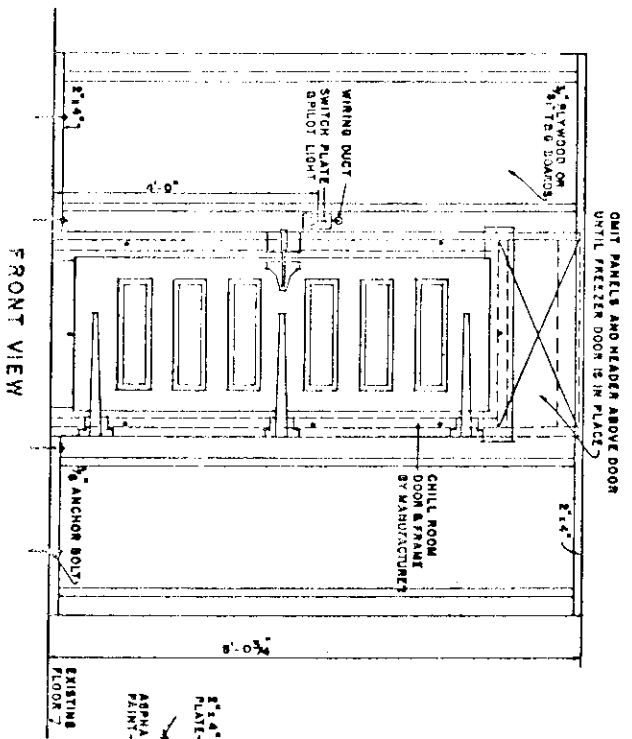
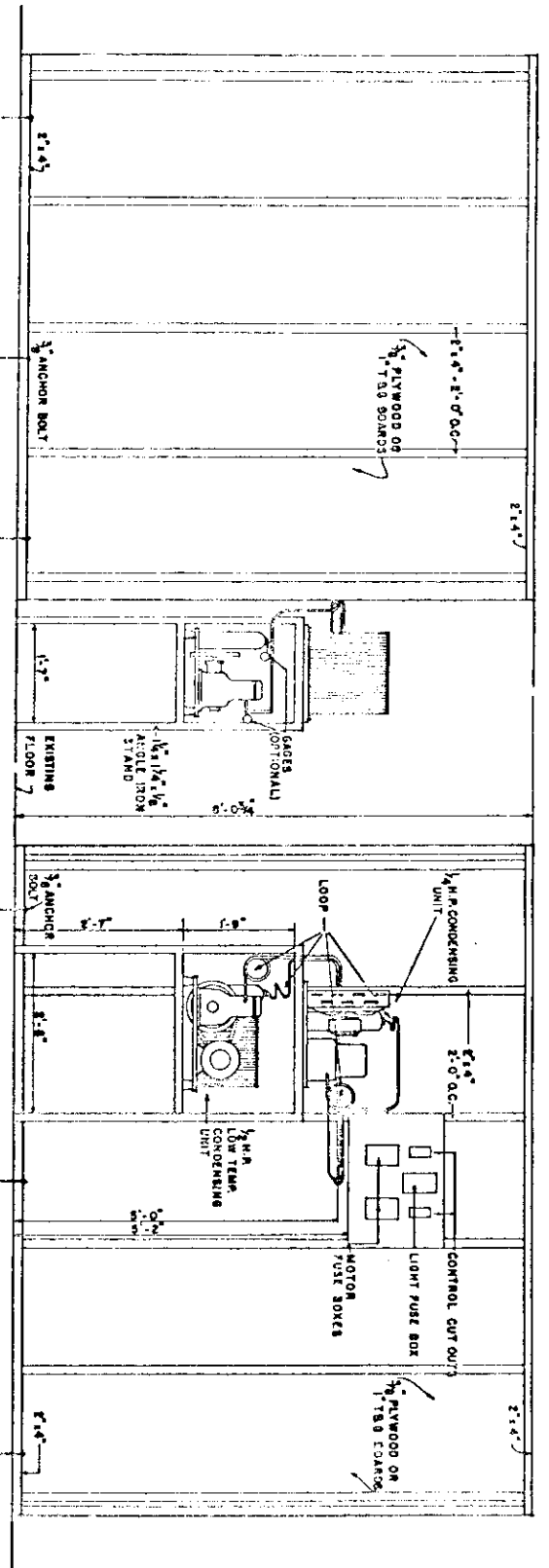
COOPERATIVE EXTENSION WORK IN
AGRICULTURE AND HOME ECONOMICS

UNITED STATES DEPARTMENT OF AGRICULTURE COOPERATING

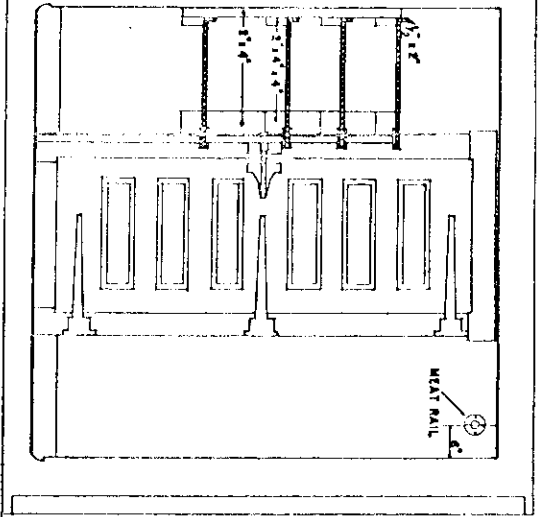
TWO-TEMPERATURE WALK-IN REFRIGERATOR FOR THE FARM

USDA EX. 7102 SHEET 1 OF 4

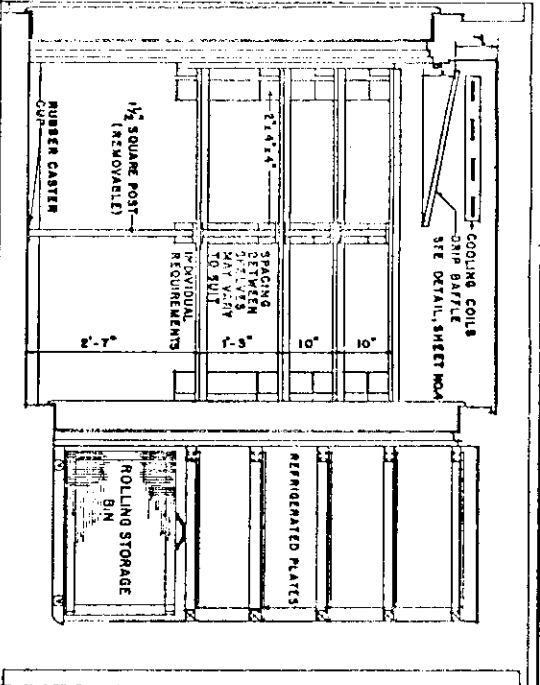
DESIGNED BY CHAS. AND SHIRAZ



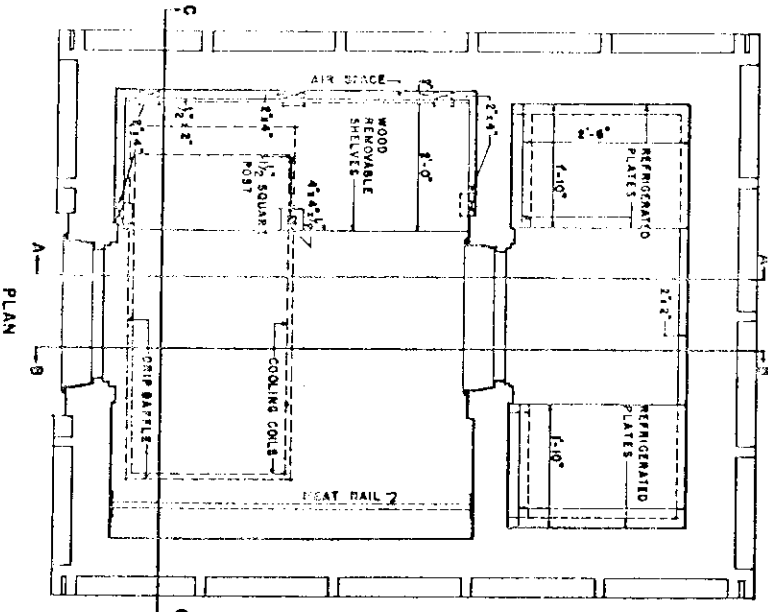
UNITED STATES DEPARTMENT OF AGRICULTURE COOPERATING
 AND
 COOPERATIVE EXTENSION WORK IN
 AGRICULTURE AND HOME ECONOMICS
 TWO-TEMPERATURE WALK-IN
 REFRIGERATOR FOR THE FARM
 USDA EX. 7102 SHEET 2 OF 4
 DESIGNED BY SWHE AND BRSAE



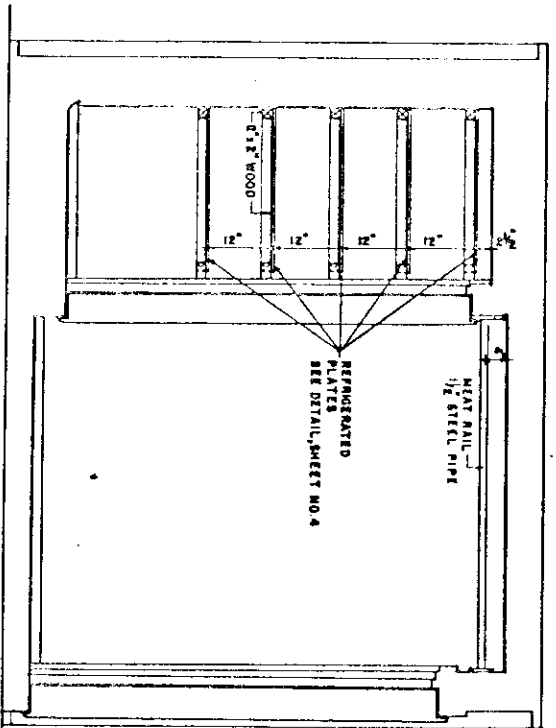
SECTION C-C



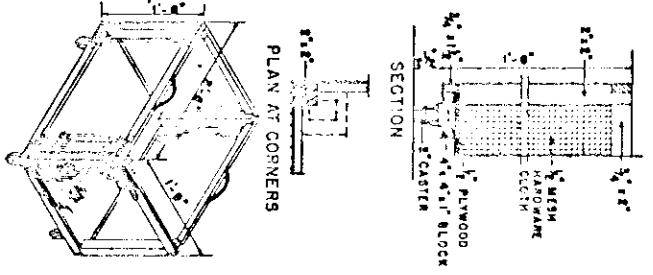
SECTION A-A



PLAN



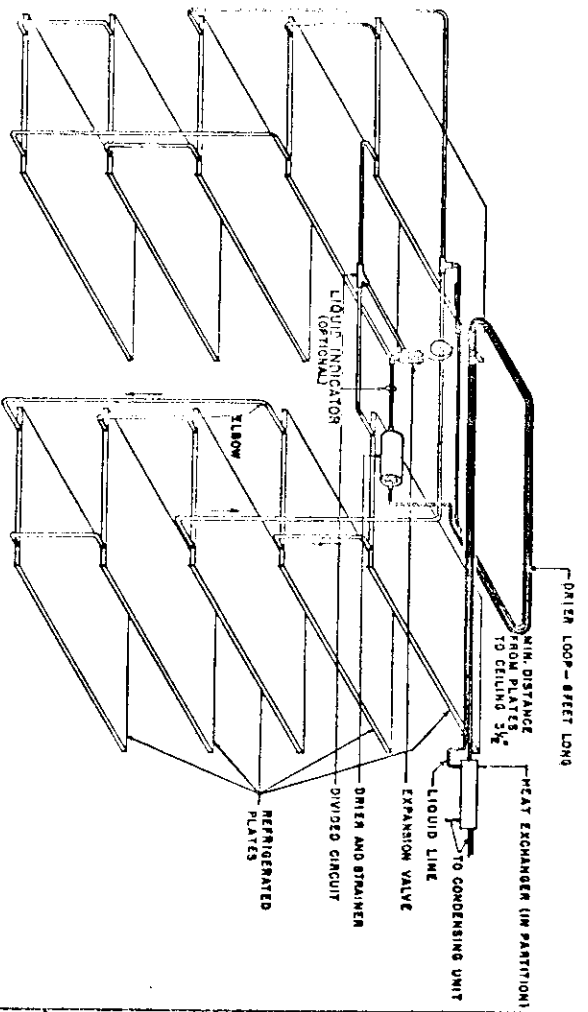
SECTION B-B



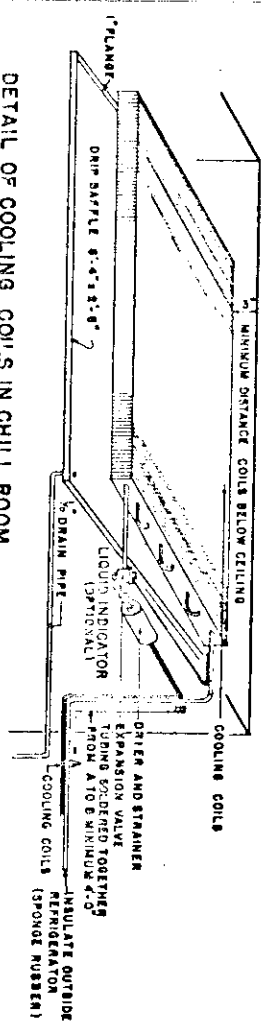
DETAILS OF ROLLING STORAGE BIN

PLAN AND SECTIONS SHOWING SHELVING AND OTHER INTERIOR DETAILS

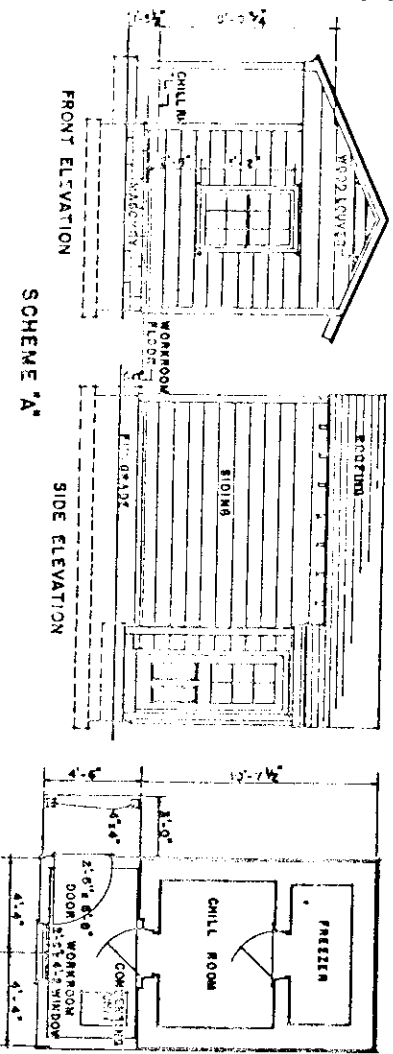
UNITED STATES DEPARTMENT OF AGRICULTURE
 COOPERATIVE EXTENSION WORK IN AGRICULTURE AND HOME ECONOMICS
 TWO-TEMPERATURE WALK-IN REFRIGERATOR FOR THE FARM
 USDA EX. 7102 SHEET 3 OF 4
 DESIGNED BY BRWHE AND BRISAC



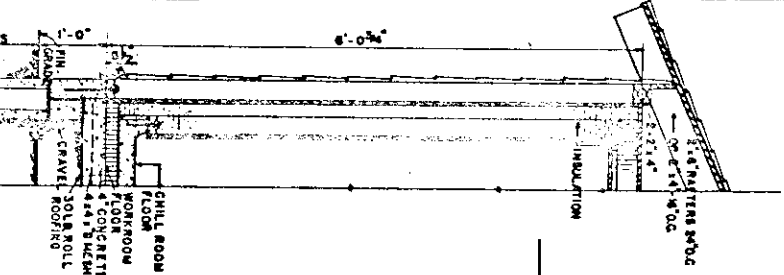
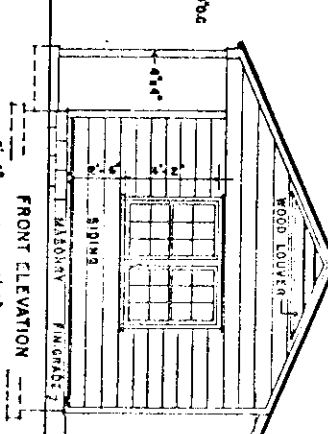
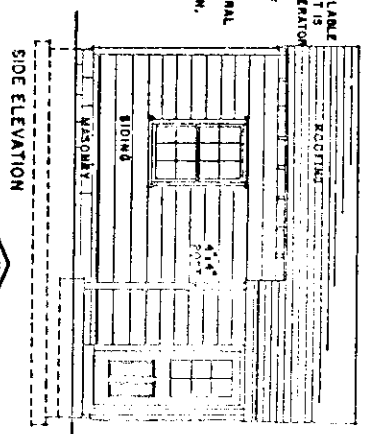
DETAIL OF REFRIGERATED PLATES IN FREEZER



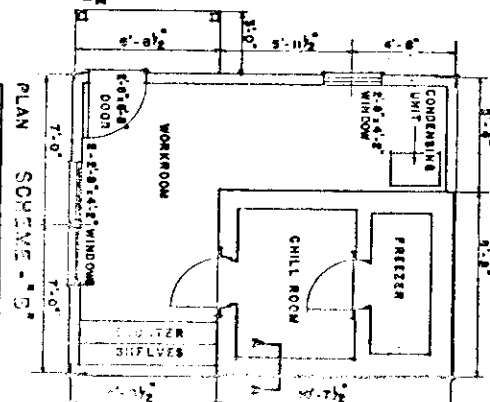
DETAIL OF COOLING COILS IN CHILL ROOM



NOTES
 1. SUITABLE SPACE IS NOT AVAILABLE IN EXISTING BUILDINGS OR IF IT IS DESIRED TO BUILD THE REFRIGERATION AS A SEPARATE STRUCTURE, SCHEMES A, B & C ARE TWO OF THE TYPICAL METHODS USED. THE TYPICAL MINIMUM STRUCTURAL REQUIREMENTS FOR A SATISFACTORY INSTALLATION.



WALL SECTION A-A



PLAN SCHEME 'B'

REVISED JAN., 1954

UNITED STATES DEPARTMENT OF AGRICULTURE COOPERATIVE EXTENSION SERVICE
 TWO-TEMPERATURE WALK-IN REFRIGERATOR FOR THE FARM
 USDA EX-7102 SHEET 4 OF 4
 DESIGNED BY CHENE AND CHENE