

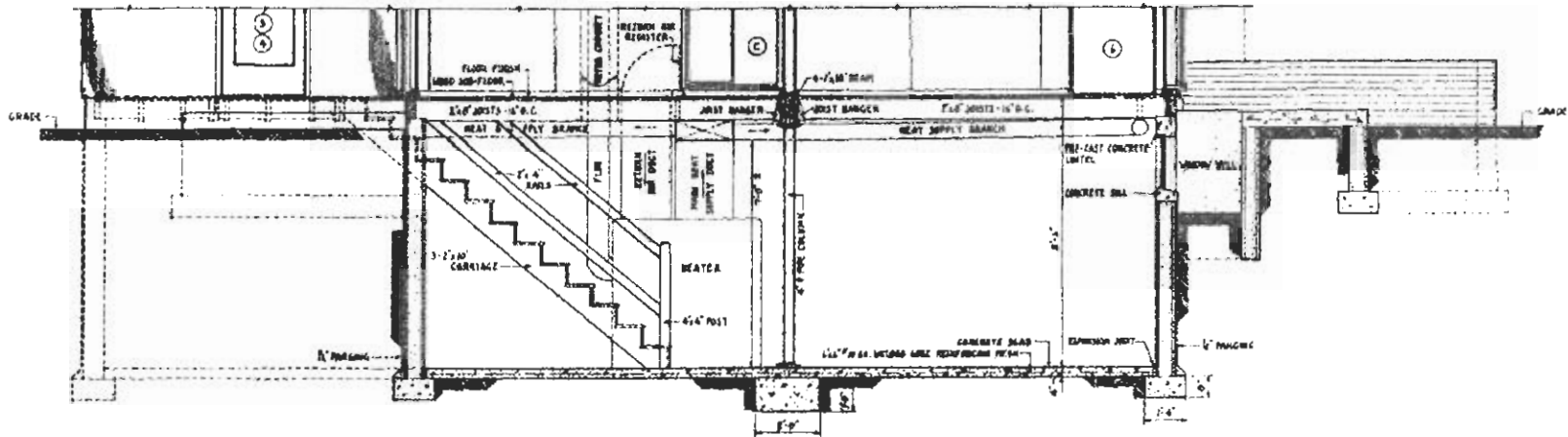
NOTES - SIZE OF HEATING UNIT, PLENUM, PERIMETER AND SUPPLY LINES, REGISTERS, RETURN AIR DUCTS, ETC., TO BE DETERMINED BY HEATING CONTRACTOR AND MANUFACTURER'S RECOMMENDATIONS. THE UNIT TO BE INSTALLED PERIMETER AND SUPPLY LINES SHOWN AS 1/4" TO 1/2" REGISTER SIZES SHOWN AS 12" X 12"

COOPERATIVE EXTENSION WORK IN AGRICULTURE AND HOME ECONOMICS

EXPANSIBLE FARMHOUSE

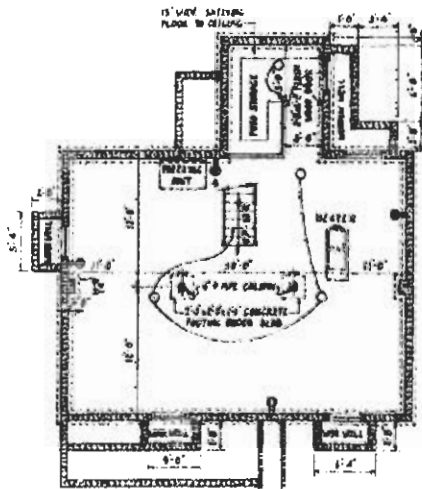
U.S. GOVERNMENT PRINTING OFFICE: 1930

FOUNDATION PLAN - HEATING & ELECTRICAL LAYOUTS - DETAILS



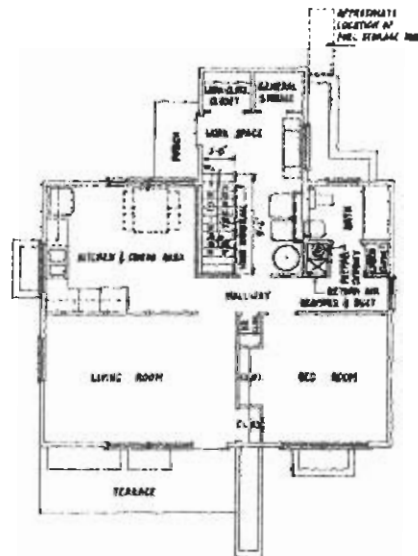
**THROUGH BUILDING SECTION
BASEMENT ALTERNATE**

SCALE 1/2"=1'-0"
SEE THROUGH BUILDING SECTION AT 2'-0" ON SHEET 3 FOR DETAILS ABOVE FIRST FLOOR LINE



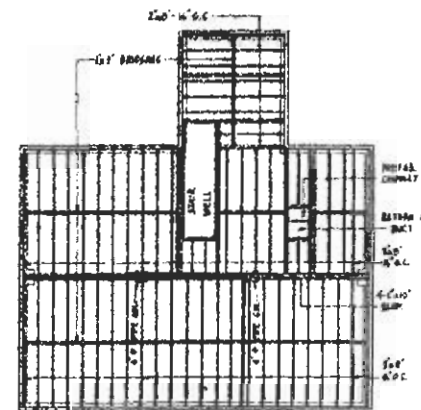
**BASEMENT PLAN-BASIC HOUSE
BASEMENT ALTERNATE**

SEE FOUNDATION PLAN ON SHEET 1 FOR DIMENSIONS OF BASIC HOUSE

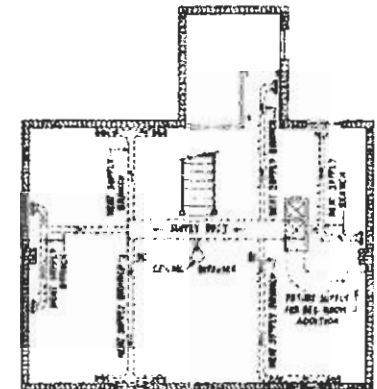


**FLOOR PLAN-BASIC HOUSE
BASEMENT ALTERNATE**

SEE FLOOR PLAN ON SHEET 3 FOR DIMENSIONS AND DETAILS OF BASIC HOUSE



**FLOOR FRAMING PLAN-BASIC HOUSE
BASEMENT ALTERNATE**



**HEATING LAYOUT-BASIC HOUSE
BASEMENT ALTERNATE**

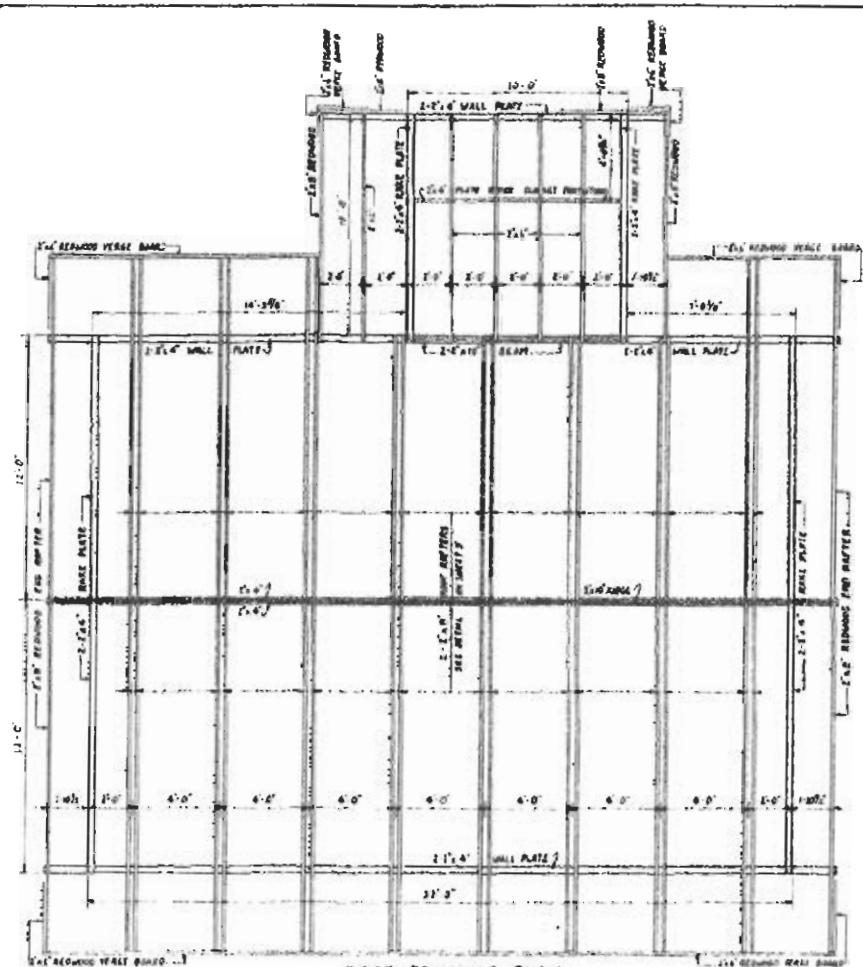
COOPERATIVE EXTENSION WORK IN
AGRICULTURE AND HOME ECONOMICS

UNITED STATES DEPARTMENT OF AGRICULTURE, COOPERATING

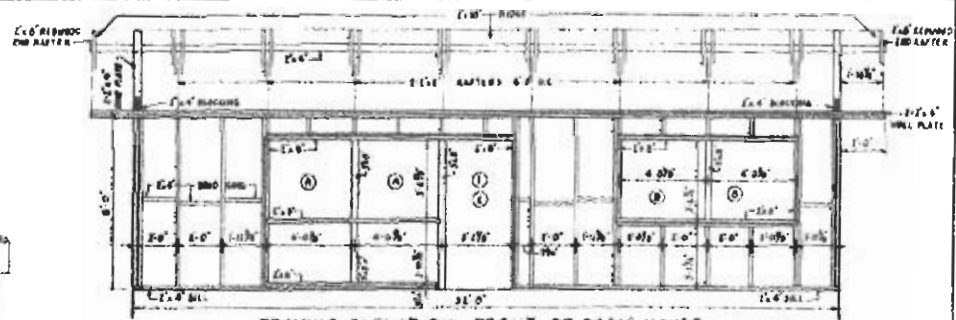
EXPANSIBLE FARMHOUSE

U.S.D.A. '33 CX. 1130 SHEET 2 OF 6

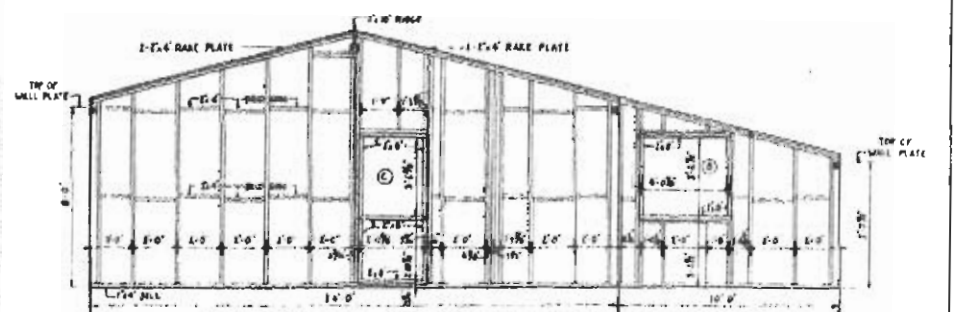
BASEMENT ALTERNATE - BASIC HOUSE



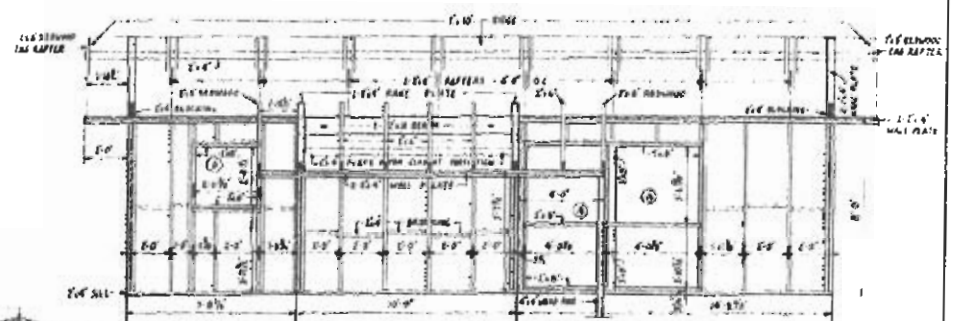
ROOF FRAMING PLAN
BASIC HOUSE



FRAMING ELEVATION - FRONT OF BASIC HOUSE



FRAMING ELEVATION - BED ROOM END OF BASIC HOUSE



FRAMING ELEVATION - REAR OF BASIC HOUSE

FRAMING DETAILS
OF
BASIC HOUSE
SCALE 1/4" = 1'-0"

2x4 WALL FRAMING UNLESS OTHERWISE INDICATED



FRAMING ELEVATION - KITCHEN AND DINING ROOM END OF BASIC HOUSE

COOPERATIVE EXTENSION WORK IN
AGRICULTURE AND HOME ECONOMICS

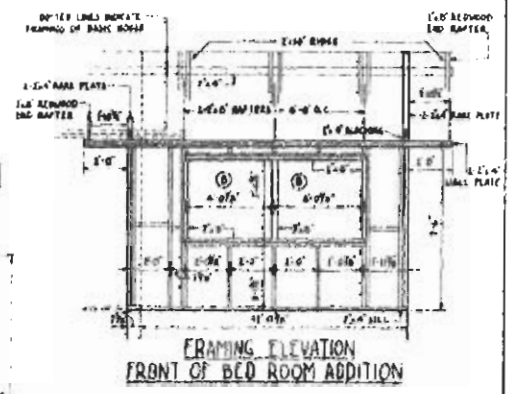
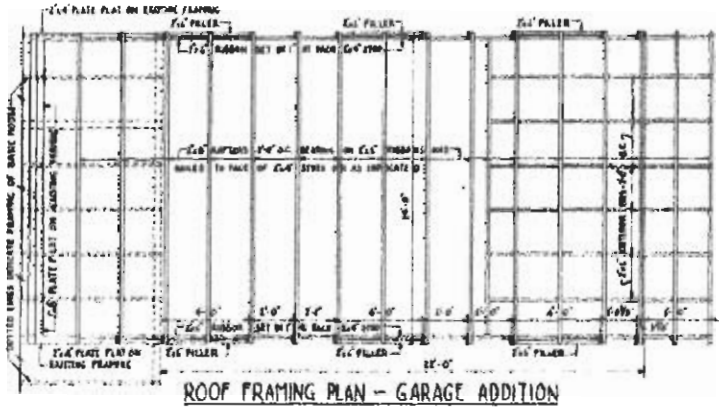
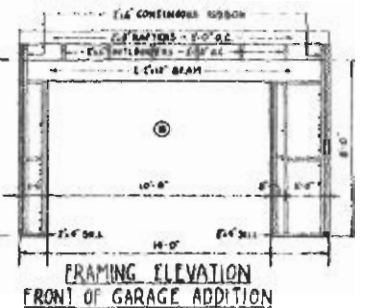
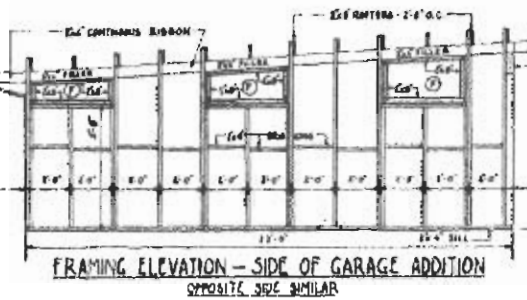
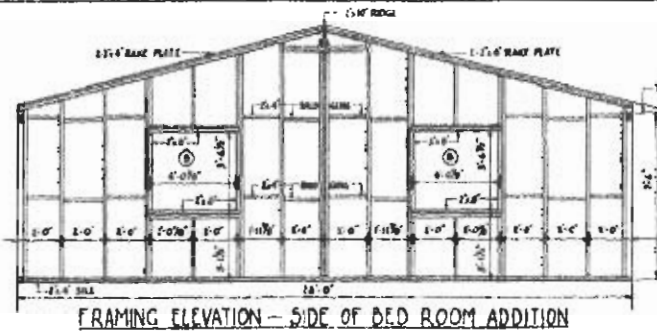
U.S. DEPARTMENT OF AGRICULTURE

UNIVERSITY OF CALIFORNIA, DIVISION OF AGRICULTURE

LXPANSIBLE FARMHOUSE

ESOA 35 EX 2120 SHEET 6 OF 8

FRAMING DETAILS OF BASIC HOUSE



FRAMING DETAILS
OF
ADDITIONS TO BASIC HOUSE
S.M.S. 5-1-12
2x4 WALL FRAMING UNLESS OTHERWISE UNLATER

