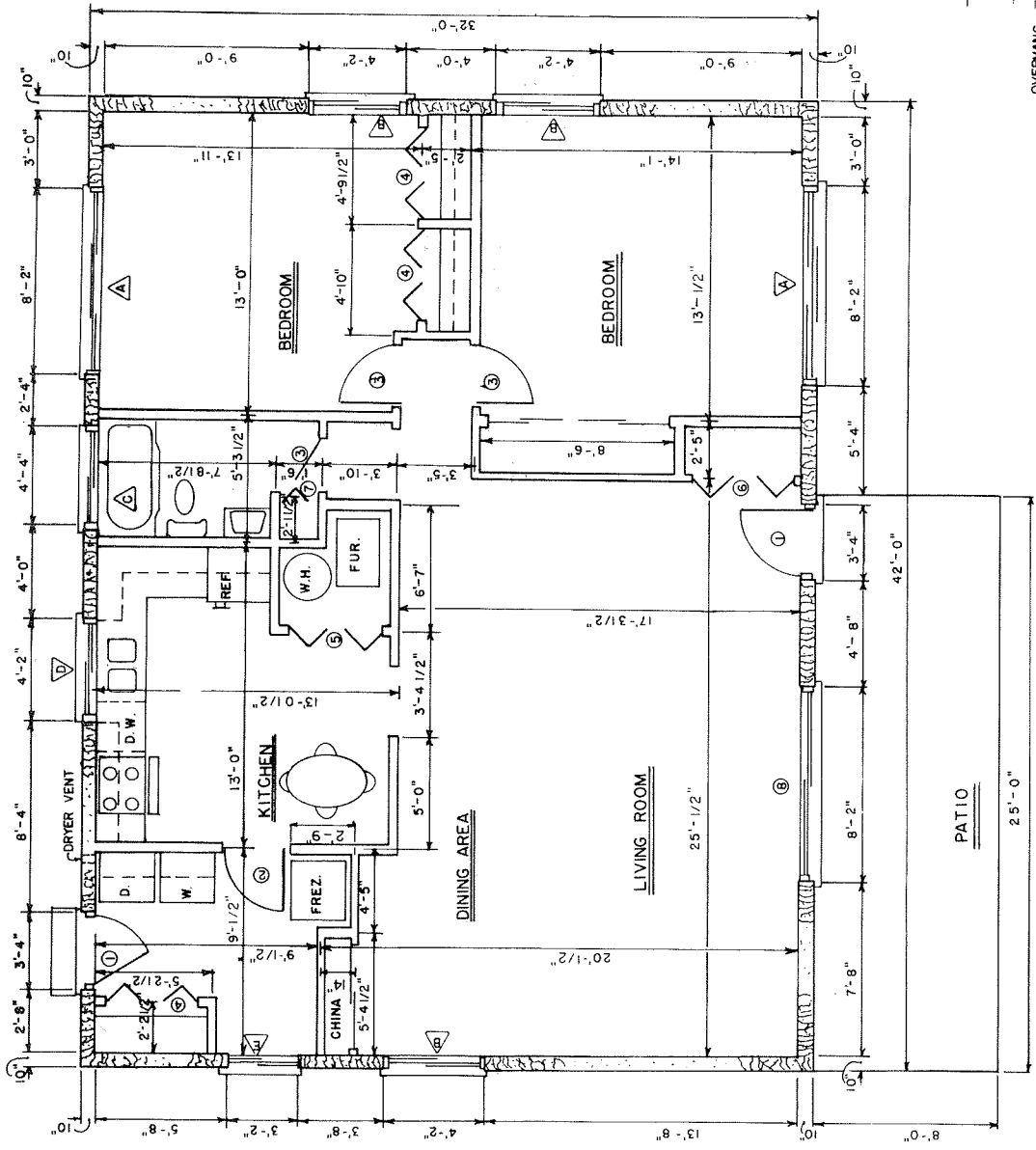
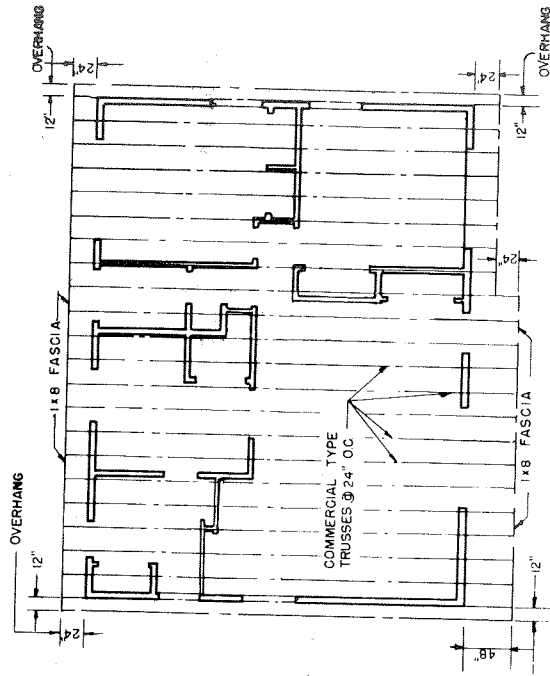
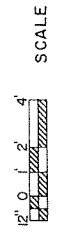


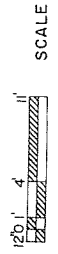
- CONSTRUCTION LIST:**
- (1) SELECT TRUSS TO MEET LOCAL SNOWLOAD CONDITIONS.
 - (2) ADEQUATELY NAIL & ANCHOR JOINTS.
 - (3) SHEATH WITH 1/2" PLYWOOD OR HIGH DENSITY FIBERBOARD OR USE DIAGONAL BRACING (IN CORNERS).
 - (4) USE EXTERIOR GLUED PLYWOOD WHEREVER IT MAY BE WETTED DURING OR AFTER CONSTRUCTION.
 - (5) PRESSURE TREAT ALL WOOD WITH GROUND CONTACT AND PROVIDE OTHER NEEDED TERMITE CONTROL.
 - (6) R VALUES DEPEND ON LOCAL CLIMATE & FUEL COST.
 - (7) PROVIDE 1 50 FT OF ATTIC VENT OPENINGS FOR EACH 150 SQ FT OF CEILING.
 - (8) WEATHERIZE ALL OPENINGS & JOINTS.



FLOOR PLAN



ROOF FRAMING PLAN

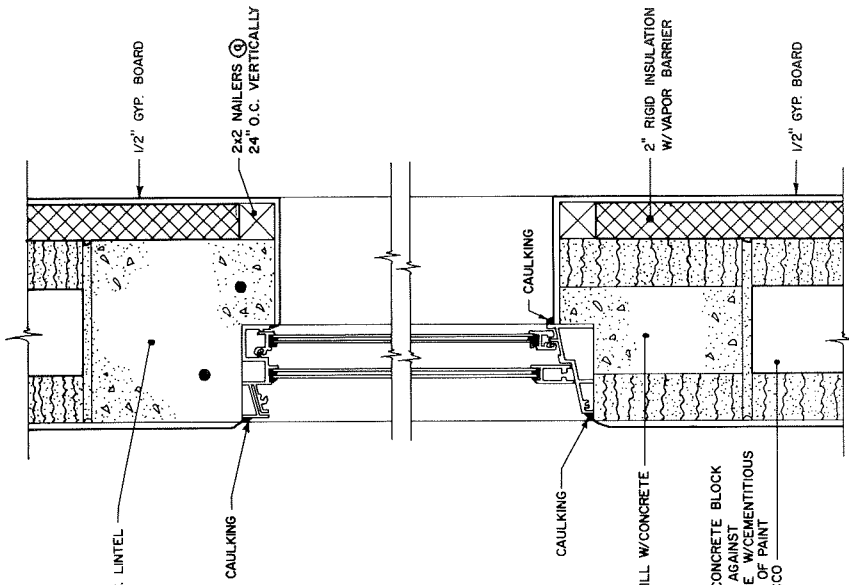


MARK	SIZE	TYPE	QUANT.
①	3'-0" x 6'-8"	WOOD, SOLID CORE, EXTERIOR	2
②	3'-0" x 6'-8"	WOOD, HOLLOW CORE, INTERIOR	1
③	2'-8" x 6'-8"	METAL BIFOLD, 4 PANELS	3
④	4'-0" x 6'-8"	LOUVERED BIFOLD, 4 PANELS	2
⑤	6'-0" x 6'-8"	BI-FOLD, 4 PANELS	1
⑥	2'-0" x 6'-8"	BI-FOLD, 2 PANELS	1
⑦	8'-0" x 6'-8"	SLIDING GLASS	1

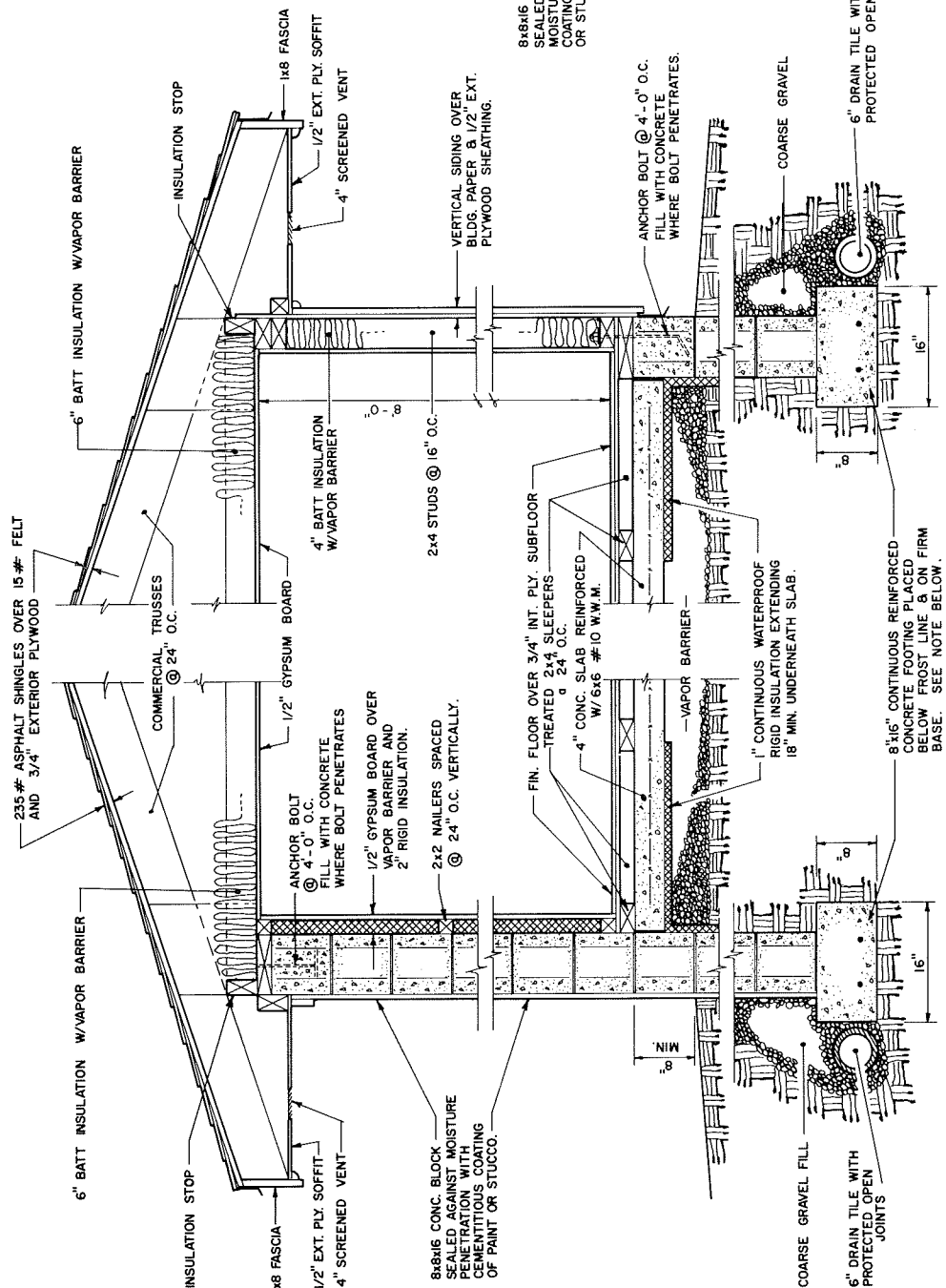
MARK	SIZE	TYPE	QUANTITY
△	8'-0" x 4'-0"	ALUMINUM, SLIDING	2
△	4'-0" x 4'-0"	ALUMINUM, SLIDING	3
△	4'-0" x 2'-0"	"	1
△	4'-0" x 3'-0"	"	1
△	3'-0" x 4'-0"	"	1

NOTE: USE INSULATED WINDOWS

WH. * WATER HEATER



TYPICAL WINDOW DETAIL



ALTERNATE WALL SECTION

TYPICAL WALL SECTION

LINTEL SCHEDULE

OPENING SIZE	LINTEL SIZE
8'-4"	2- 2x10's
4'-4"	2- 2x6's
3'-4"	2- 2x4's

FOR USE IN FRAME CONSTRUCTION

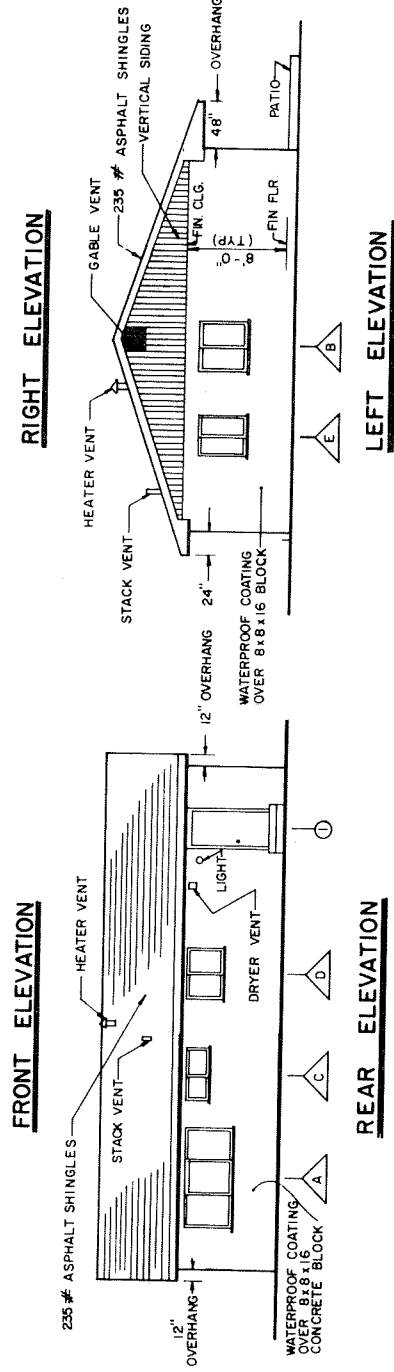
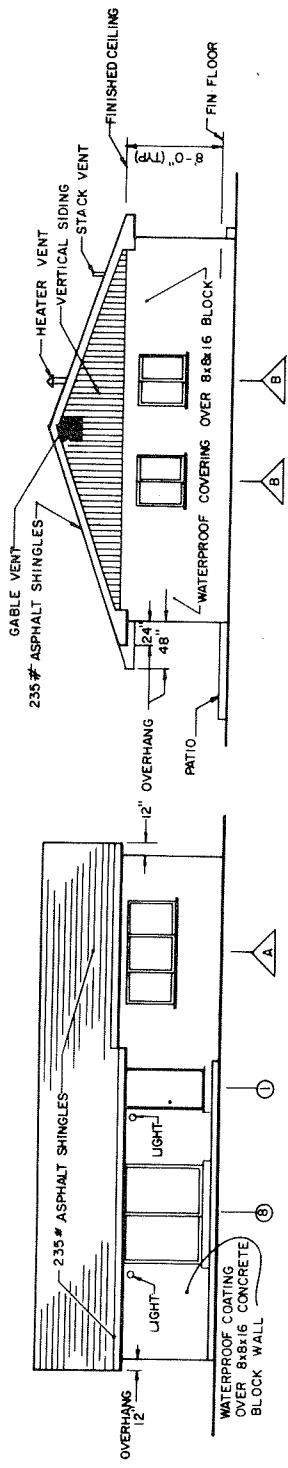
COOPERATIVE EXTENSION WORK IN AGRICULTURE AND HOME ECONOMICS

AND UNITED STATES DEPARTMENT OF AGRICULTURE COOPERATING

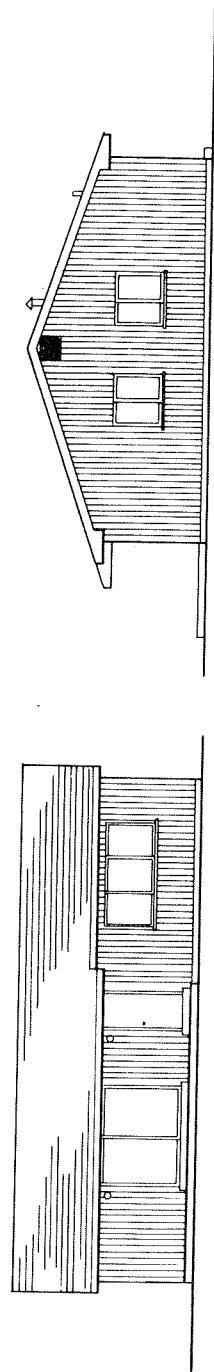
TWO-BEDROOM HOUSE

USDA '75 7210 SHEET 2 OF 3

NOTE: ACTUAL SIZE AND SIZE & AMOUNT OF REINFORCEMENT DEPEND ON LOCATION & SOIL CONDITION. CHECK LOCAL CODES BEFORE STARTING CONSTRUCTION.



EXTERIOR ELEVATIONS



1" = 4' SCALE

ALTERNATE ELEVATIONS