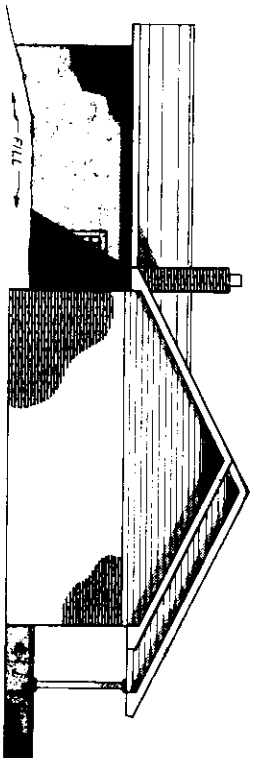
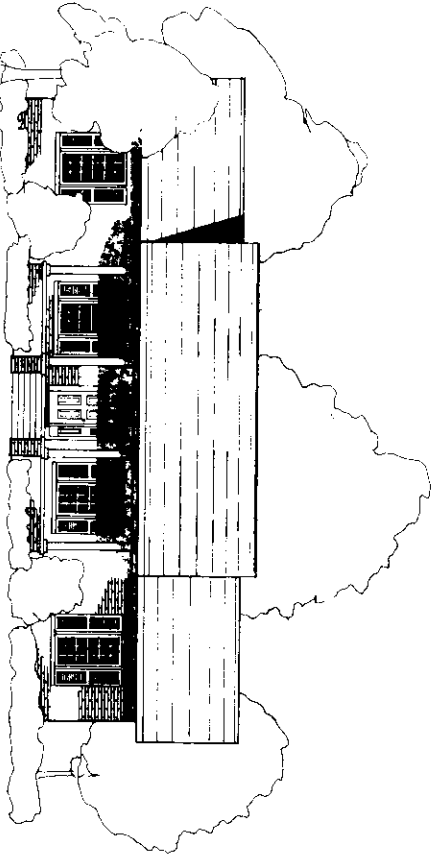


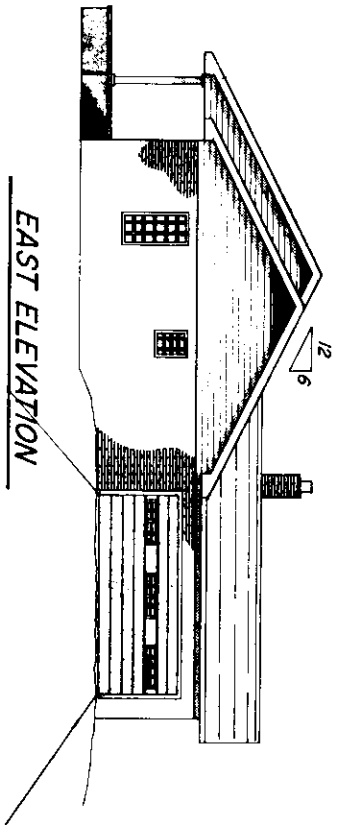
NORTH ELEVATION



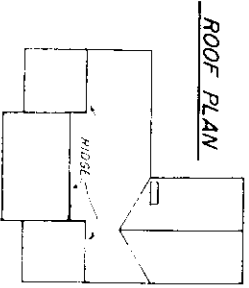
WEST ELEVATION



SOUTH ELEVATION



EAST ELEVATION



ROOF PLAN

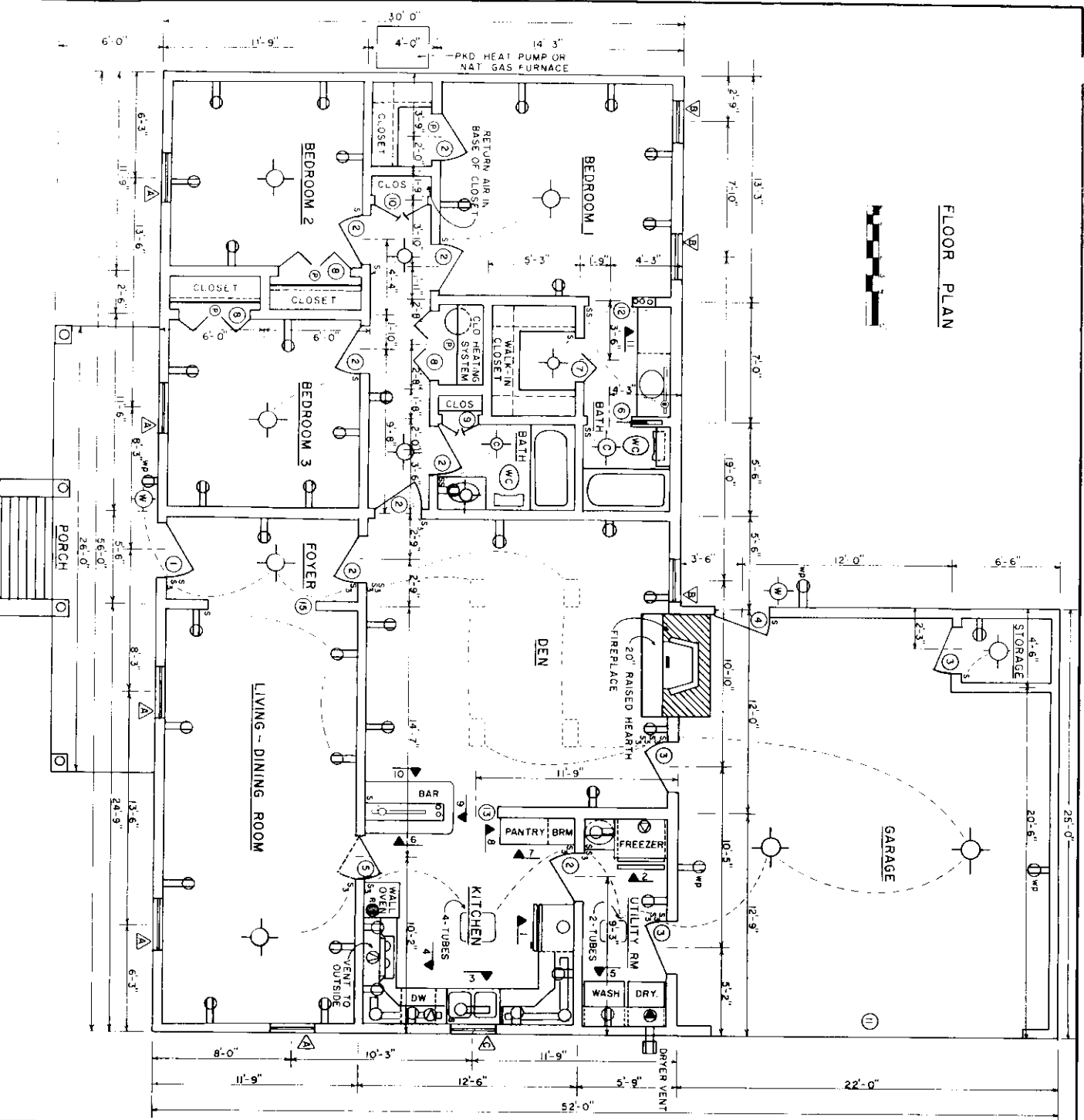
FOR OPTIMUM ENERGY EFFICIENCY
AND LOWER UTILITY COSTS, ROOF
RIDGE SHOULD BE SITED EAST TO
WEST.



BASED ON MISS. ST. UNIV. PLAN NO. 7223 A

COOPERATIVE EXTENSION WORK IN
AGRICULTURE AND HOME ECONOMICS
UNITED STATES DEPARTMENT OF AGRICULTURE COOPERATING
AND
ENERGY SAVING
THREE BEDROOM COLONIAL
USDA '81 EX. 7225 SHEET 1 OF 3

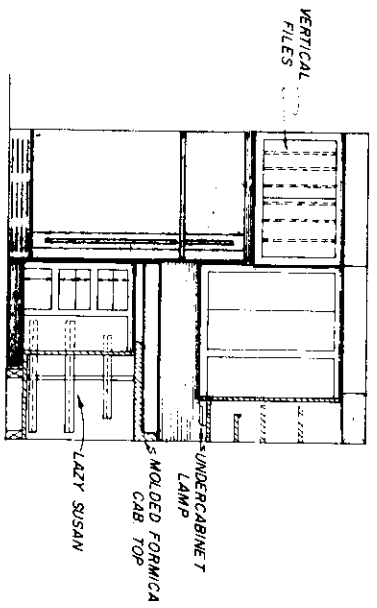
FLOOR PLAN



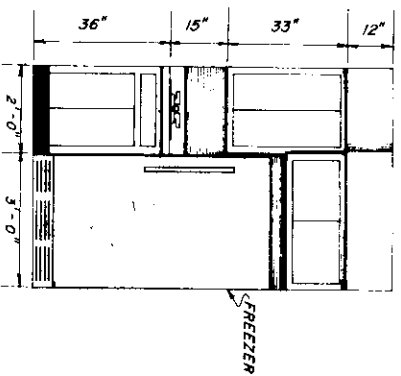
COOPERATIVE EXTENSION WORK IN
AGRICULTURE AND HOME ECONOMICS

UNITED STATES DEPARTMENT OF AGRICULTURE COOPERATING

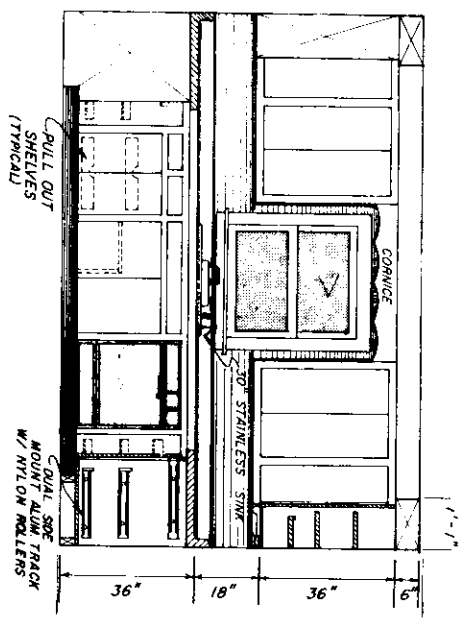
AND
ENERGY SAVING
THREE BEDROOM COLONIAL
USDA 81 EX 7225 SHEET 2 OF 5



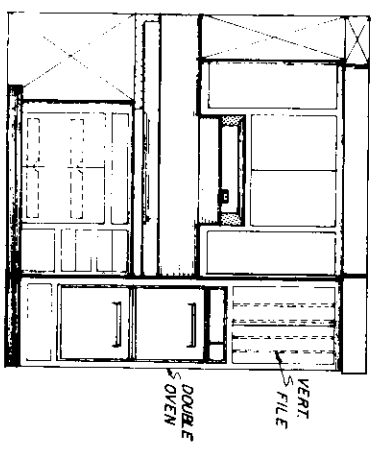
ELEVATION A



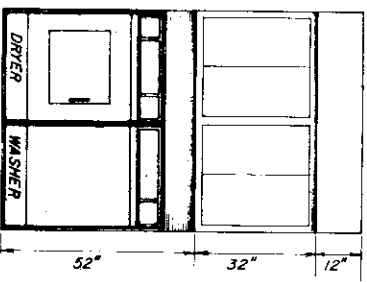
ELEVATION B



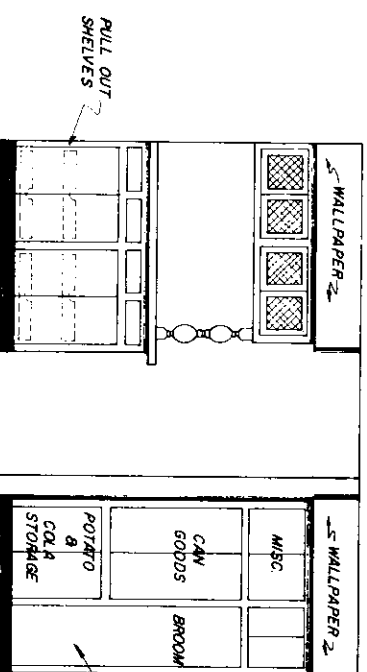
ELEVATION C



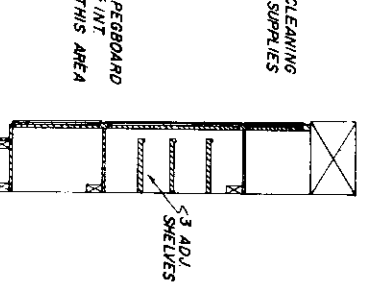
ELEVATION A



ELEVATION B



ELEVATION C



ELEVATION D

NOTE: CABINET HARDWARE AND TRIM TO BE SELECTED BY OWNER



COOPERATIVE EXTENSION WORK IN AGRICULTURE AND HOME ECONOMICS

UNITED STATES DEPARTMENT OF AGRICULTURE COOPERATING

ENERGY SAVING THREE BEDROOM COLONIAL

USDA '81 EX. 7225 SHEET 3 OF 5

DOOR SCHEDULE	
CODE	DESCRIPTION
①	3'-0" x 6'-8" RAISED PANEL EXTERIOR DOOR
②	2'-8" x 6'-8" INTERIOR PANEL DOOR
③	3'-0" x 6'-8" EXTERIOR PANEL DOOR
④	3'-0" x 6'-8" EXTERIOR PANEL WITH 9 LITE TOP
⑤	2'-8" x 6'-8" INTERIOR DOUBLE SWING PANEL WITH STOPS
⑥	2'-6" x 6'-8" POCKET DOOR
⑦	2'-8" x 6'-8" INTERIOR SINGLE BI-FOLD W/LOVERED TOP
⑧	4'-0" x 6'-8" INTERIOR DOUBLE BI-FOLD W/LOVERED TOP
⑨	2'-0" x 6'-8" INTERIOR BATHING DOOR
⑩	3'-0" x 5'-0" INTERIOR BATHING DOOR
⑪	18'-0" x 7'-0" EXTERIOR OVERHEAD ALUMINUM DOOR
⑫	2'-6" x 6'-8" FRAMED OPENING
⑬	2'-8" x 8'-0" UNFRAMED OPENING
⑭	8'-0" x 6'-8" FRAMED OPENING
⑮	6'-0" x 6'-8" UNFRAMED OPENING

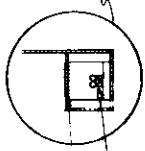
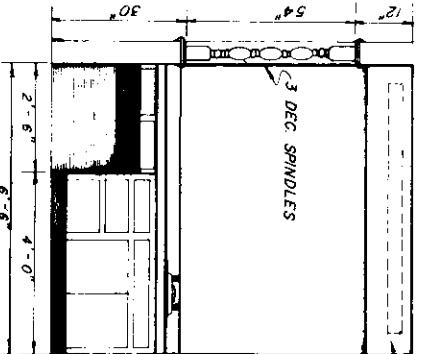
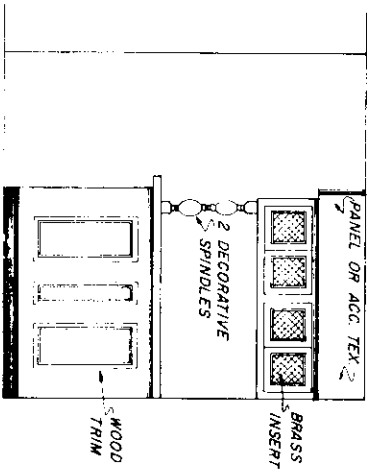
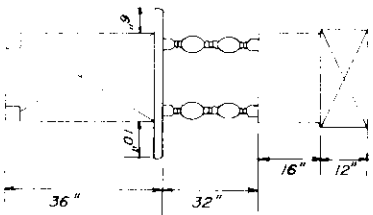
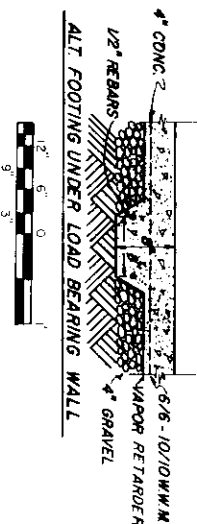
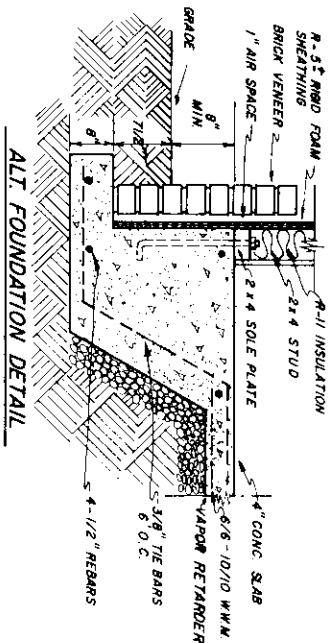
ELECTRICAL SCHEDULE	
MARK	DESCRIPTION
S	SINGLE POLE SWITCH
S ₃	THREE-WAY SWITCH
○	110 V DUPLEX OUTLET
⊖	RANGE OUTLET
⊕	110 V. SPECIAL PURPOSE OUTLET
⊖	220 V "
⊖	110 V. WEATHERPROOF OUTLET
○	CEILING OUTLET
○	FLOOR, CEILING FIXTURE
⊖	PULL CHAIN CEILING OUTLET
⊖	WALL HUNG OUTLET
⊖	RECESSED EYEBALL LIGHT
⊖	UNDER CAB. FLUORESCENT
⊖	COMB. HEAT FAN, & LIGHT
⊖	RECESSED FLUORESCENT
⊖	SOFFIT FLUOR. LAMP
⊖	VAPOR PROOF LIGHT, REC.

WINDOW SCHEDULE	
CODE	DESCRIPTION
A	3'-0" x 6'-2" MULTI-LITE SINGLE HUNG
B	3'-0" x 4'-4" MULTI-LITE SINGLE HUNG
C	2'-6" x 3'-0" MULTI-LITE SINGLE HUNG

NOTE: ALL FLUORESCENT TUBES SHALL BE DELUXE WARM WHITE

TV, DOOR CHIME, AND TELEPHONE OUTLET LOCATION TO BE SELECTED

HWAC NOTE: ALL HWAC DUCTS SHALL BE INSULATED AND SHALL BE INSTALLED UNDER FLOOR IN PLAIN WITH GRATE SPACE.



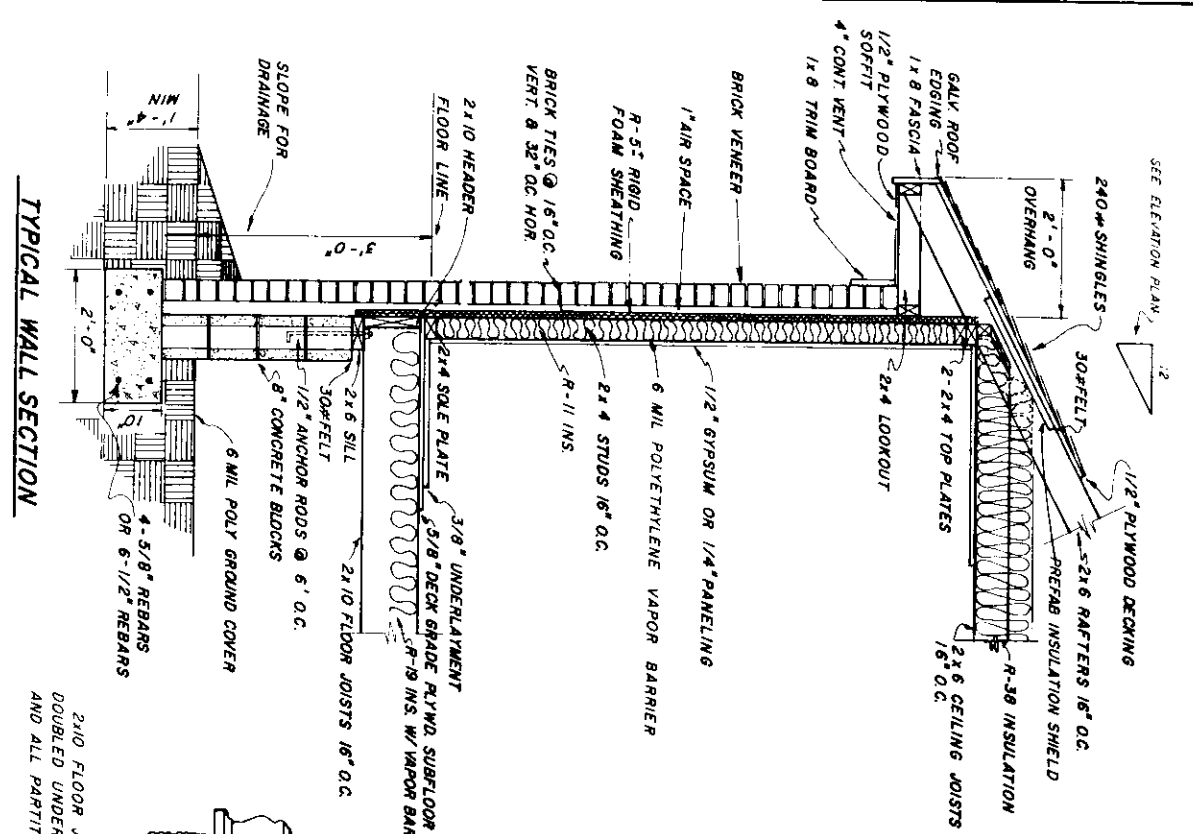
CULTURED MARBLE TOP W/ MOLDED SINK & BACKSPASH



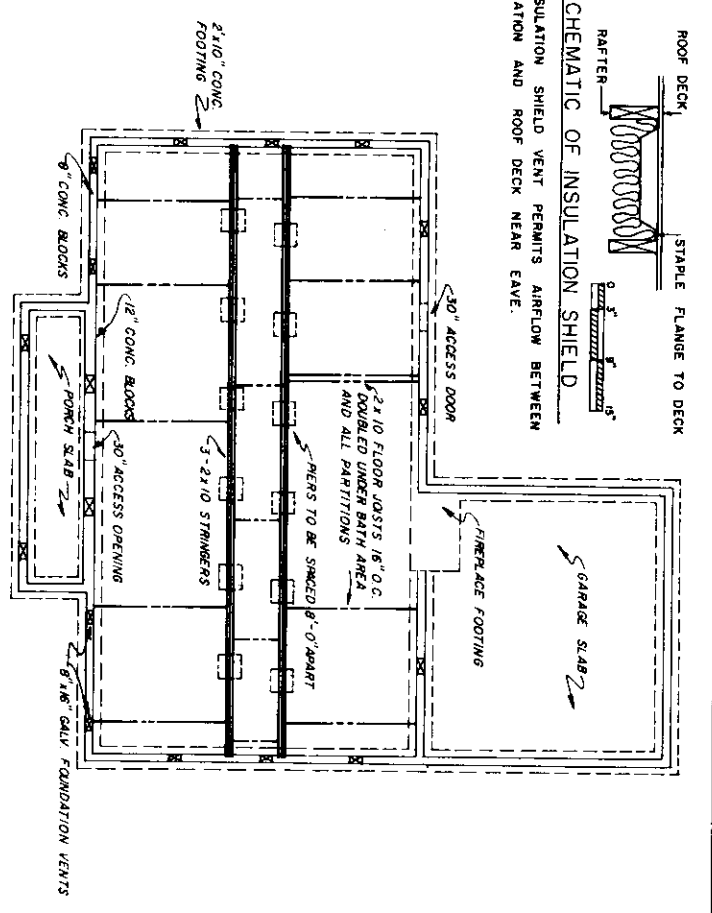
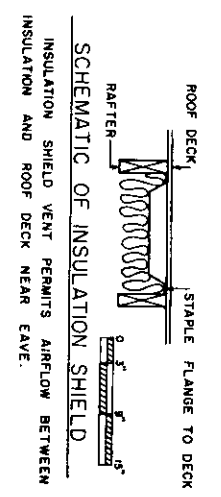
COOPERATIVE EXTENSION WORK IN AGRICULTURE AND HOME ECONOMICS

UNITED STATES DEPARTMENT OF AGRICULTURE COOPERATING AND ENERGY SAVING THREE BEDROOM COLONIAL

USDA '81 EX. 7225 SHEET 4 OF 5

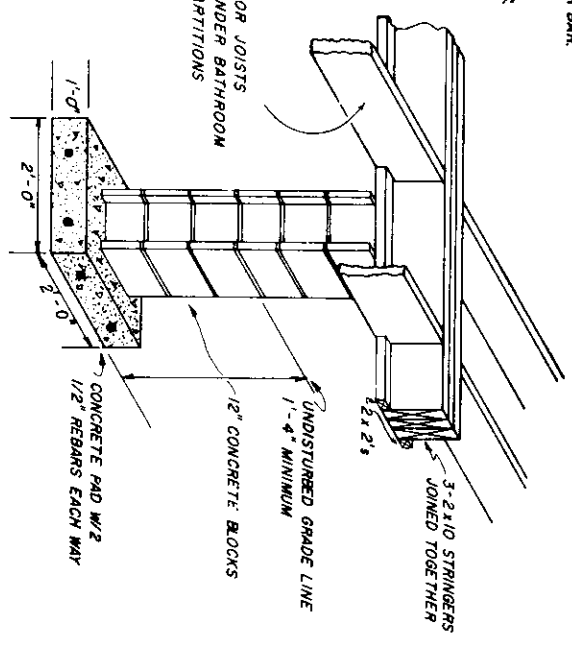


TYPICAL WALL SECTION



FOUNDATION PLAN

2x10 FLOOR JOISTS DOUBLED UNDER BATHROOM AND ALL PARTITIONS



TYPICAL PIER DETAIL

NO SCALE



COOPERATIVE EXTENSION WORK IN
 AGRICULTURE AND HOME ECONOMICS
 UNITED STATES DEPARTMENT OF AGRICULTURE COOPERATING
 AND
 ENERGY SAVING
 THREE BEDROOM COLONIAL
 USDA '81 EX 7225 SHEET 5 OF 5