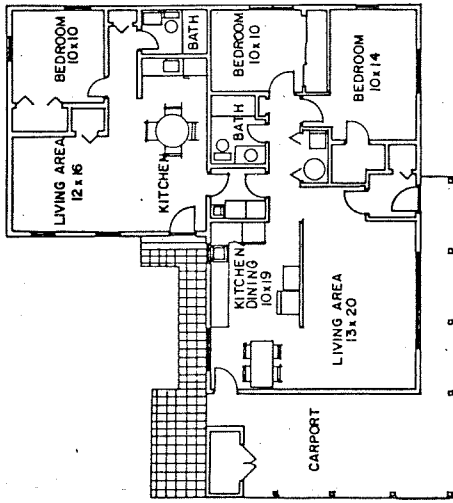
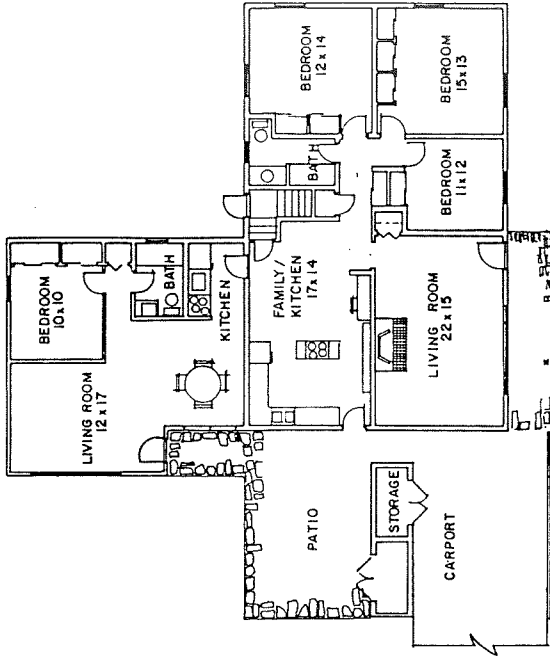


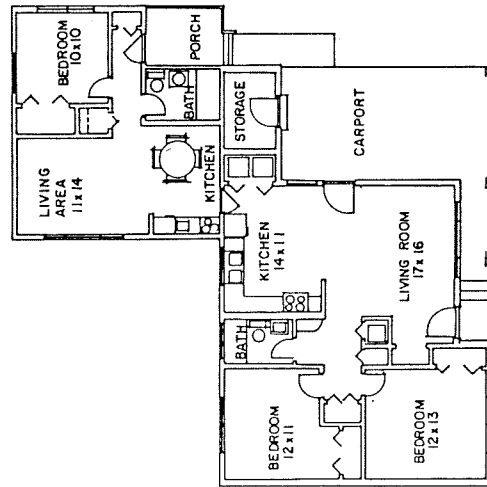
OPTION 1, USING USDA PLAN 7170



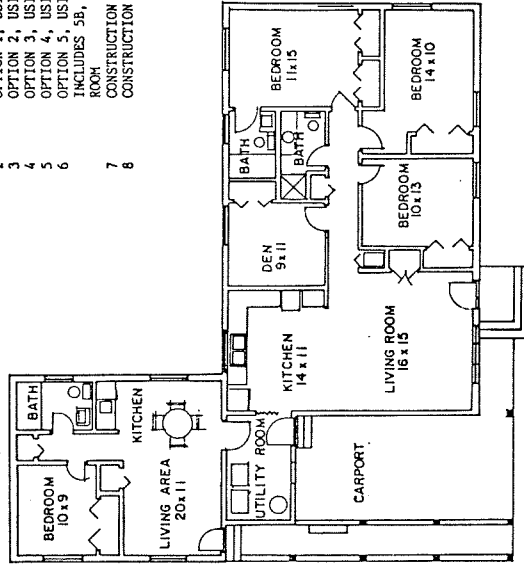
OPTION 2, USING USDA PLAN 7239



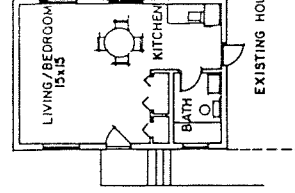
OPTION 3, USING USDA PLAN 7246



OPTION 4, USING USDA PLAN 7204



OPTION 5, USING USDA PLAN 7202, ALSO INCLUDES 5B, WITH NO SEPARATE BED-ROOM

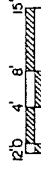


OPTION 5B

CONTENTS

SHEET #	DESCRIPTION
1	PROPOSED ADDITIONS, CONNECTING AT REAR
2	OPTION 1, USING USDA PLAN 7170
3	OPTION 2, USING USDA PLAN 7239
4	OPTION 3, USING USDA PLAN 7246
5	OPTION 4, USING USDA PLAN 7204
6	OPTION 5, USING USDA PLAN 7202, ALSO INCLUDES 5B, WITH NO SEPARATE BED-ROOM
7	CONSTRUCTION DETAILS FOR ALL ADDITIONS
8	CONSTRUCTION DETAILS FOR ALL ADDITIONS

NOTE: PROPOSED ADDITIONS FOR INDEPENDENT LIVING, PARENT(S), OR OTHER FAMILY MEMBERS. PROVIDES BOTH ACCESS TO EXISTING HOUSE AND AN INDEPENDENT ENTRY. FEATURES INCLUDE LIVING/DINING AREA, SEPARATE BEDROOM, BATH, CLOSET SPACE, AND KITCHENETTE. OPTION 5B ALSO HAS A PLAN WITH NO SEPARATE BEDROOM. FOR PURPOSE OF ILLUSTRATION, THE ADDITIONS ARE SHOWN WITH EXISTING USDA PLANS.



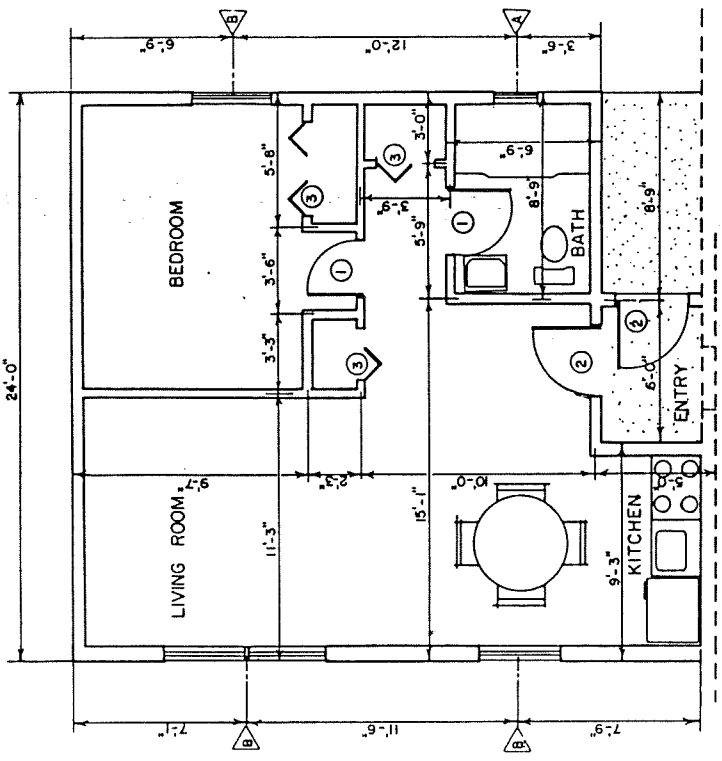
SCALE 3/32" = 1'-0"

COOPERATIVE EXTENSION SERVICE
 AGRICULTURE AND HOME ECONOMICS

UNITED STATES DEPARTMENT OF
 AGRICULTURE COOPERATING

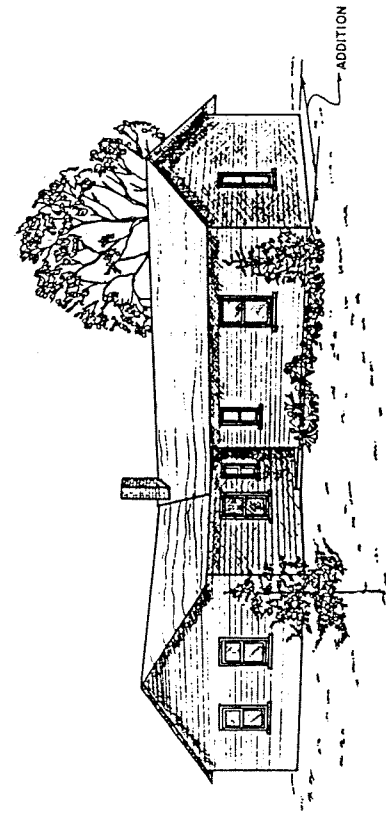
REAR ADDITIONS
 FOR INDEPENDENT LIVING

MD '87 7268 SHEET 1 OF 8

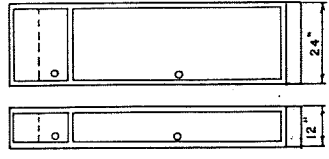


EXISTING HOUSE, UTILITY ROOM ENTRY

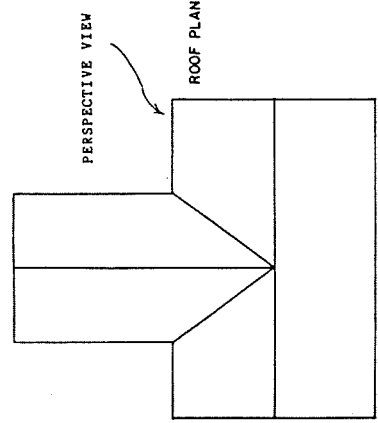
ADDITION DETAILS SCALE 1/4" = 1'-0"



PERSPECTIVE (NO SCALE)

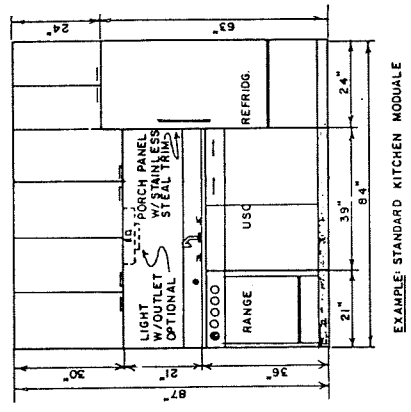


WALL CABINETS (8" HIGH, 12" OR 24" DEEP, WIDTH RANGES FROM 12"-24")



PERSPECTIVE VIEW

ROOF PLAN

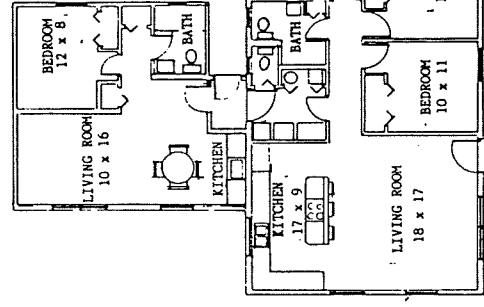


EXAMPLE: STANDARD KITCHEN MODULE

KITCHEN DETAIL (NO SCALE)

*NOTE:

MODULAR KITCHENS IDEAL FOR SENIOR CITIZEN APARTMENTS, CONVENIENT OPERATION, DURABLE, FUNCTIONAL STYLING, AND LOW MAINTENANCE. FEATURE ELECTRIC OR GAS RANGE, OVEN, COUNTERTOP SINK WITH GARBAGE DISPOSAL, REFRIGERATOR AND OPTIONAL UPPER CABINET. MODULES AVAILABLE UP TO 8 FEET IN WIDTH. LARGER MODELS GIVE MORE CABINET SPACE AND GREATER CUBIC FEET IN REFRIGERATOR.
 * FLOOR TO CEILING CABINETS CONVENIENT FOR EXTRA STORAGE.



NOTE: PROPOSED ADDITION SHOWN WITH USDA PLAN 7170

SCALE 3/32" = 1'-0"

MARK	SIZE	DESCRIPTION	#REQ.
A	2'0" x 3'0"	WOOD DOUBLE HUNG	1
B	3'6" x 4'2"	WOOD DOUBLE HUNG	4

MARK	SIZE	DESCRIPTION	#REQ.
1	2'6" x 6'8"	INTERIOR HOLLOW CORE	2
2	3'0" x 6'8"	EXTERIOR SOLID CORE	2
3	2'0" x 6'8"	BI-FOLD	4

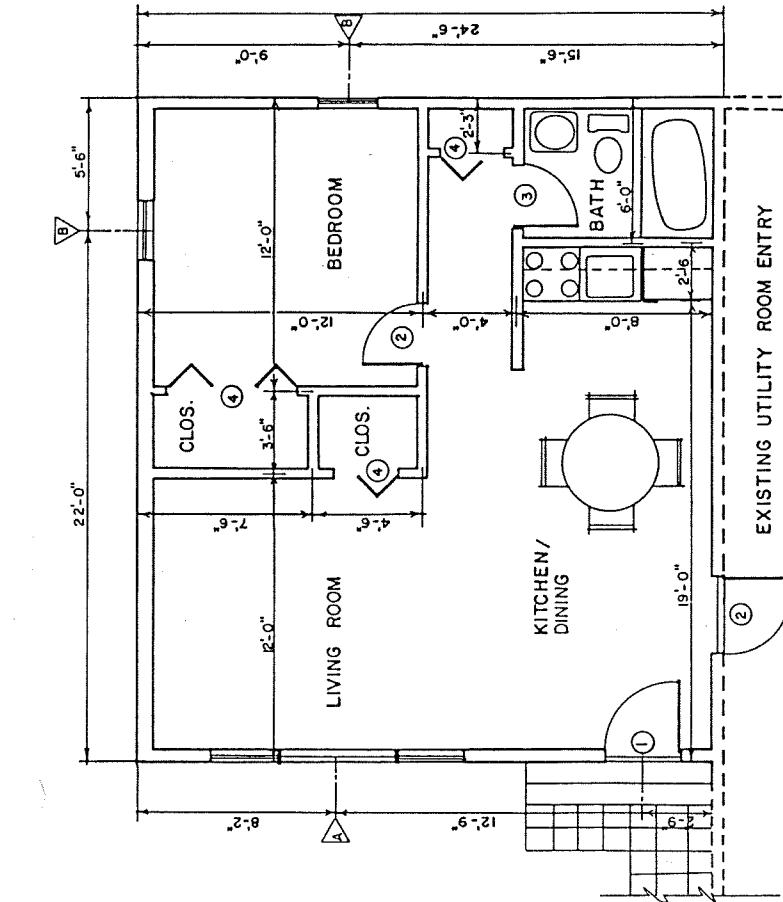
USE INSULATED GLASS FOR ALL WINDOWS

COOPERATIVE EXTENSION SERVICE
 AGRICULTURE AND HOME ECONOMICS

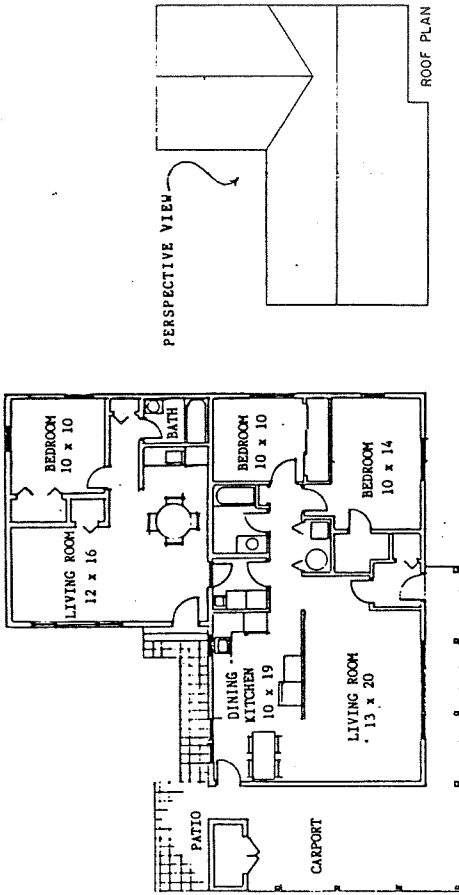
UNITED STATES DEPARTMENT OF AGRICULTURE COOPERATING
 AND

REAR ADDITIONS
 FOR INDEPENDENT LIVING

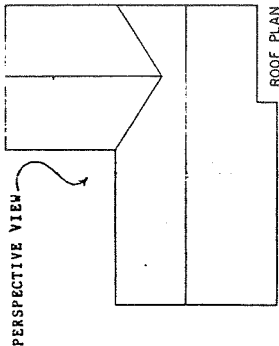
MD. '87 7268 SHEET 2 OF 8
 OPTION 1 WITH USDA PLAN 7170



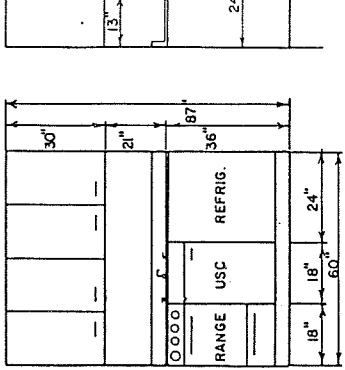
ADDITION DETAILS SCALE 1/4" = 1'-0"



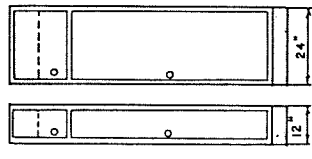
SCALE 3/32" = 1'-0"
NOTE: PROPOSED ADDITION SHOWN WITH USDA PLAN 7239



ROOF PLAN



KITCHEN DETAIL (NO SCALE)



WALL CABINETS
(8 1/2" HIGH, 12" OR 24" DEEP
WIDTH RANGES FROM 12"-24")

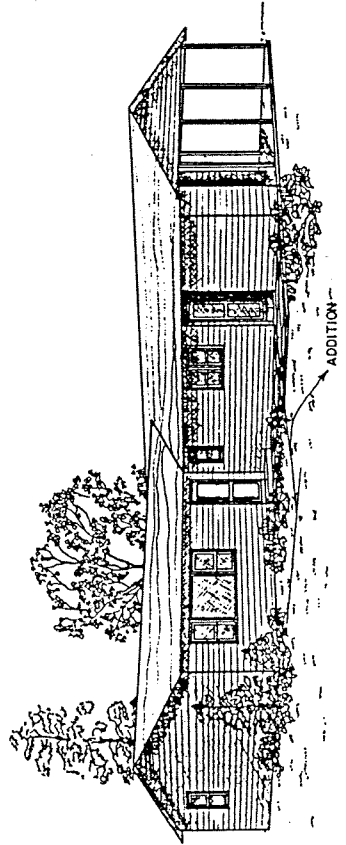
*NOTE:

MODULAR KITCHENS IDEAL FOR SENIOR CITIZEN APARTMENTS, CONVENIENT OPERATION, DURABLE, FUNCTIONAL STYLING, AND LOW MAINTENANCE. FEATURE ELECTRIC OR GAS RANGE, OVEN, COUNTERTOP SINK WITH GARBAGE DISPOSAL, REFRIGERATOR AND OPTIONAL UPPER CABINET. MODELS AVAILABLE UP TO 8 FEET IN WIDTH. LARGER MODELS GIVE MORE CABINET SPACE AND GREATER CUBIC FEET IN REFRIGERATOR.
* FLOOR TO CEILING CABINETS CONVENIENT FOR EXTRA STORAGE.

WINDOW SCHEDULE			
MARK	SIZE	DESCRIPTION	#REQ.
A	2'-8" x 4'-6"	DOUBLE HUNG	2
	5'-0" x 4'-6"	FIXED	1
B	2'-6" x 4'-0"	DOUBLE HUNG	2

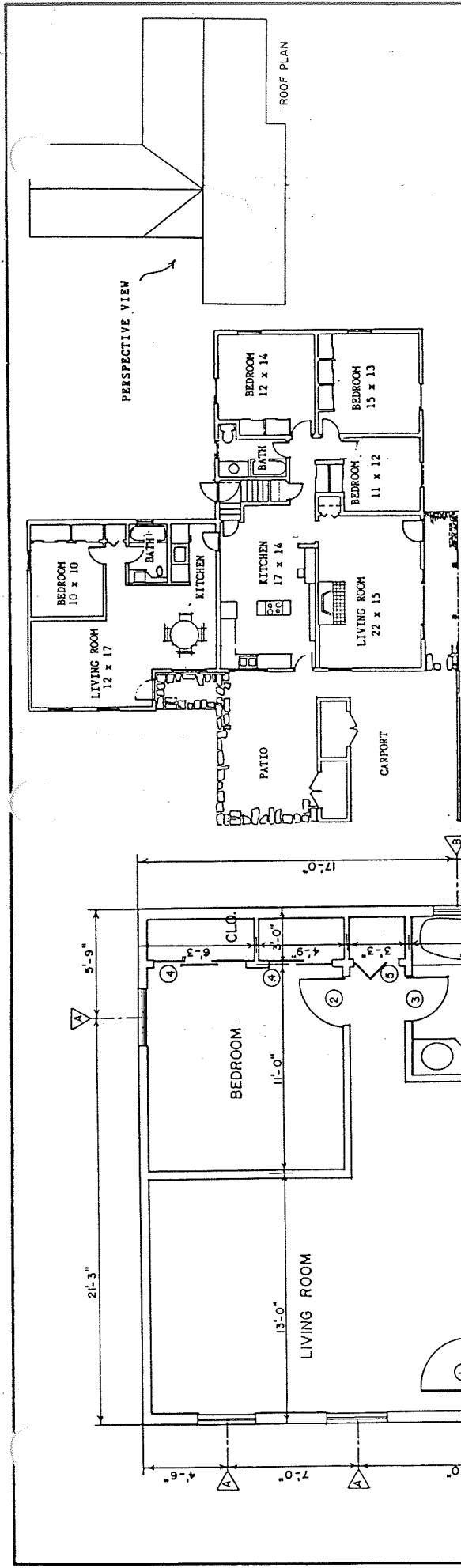
DOOR SCHEDULE			
MARK	SIZE	DESCRIPTION	#REQ.
1	3'-0" x 6'-8"	EXTERIOR-FLUSH PANEL	2
2	2'-8" x 6'-8"	INTERIOR-FLUSH PANEL	1
3	2'-6" x 6'-8"	INTERIOR-FLUSH PANEL	1
4	2'-0" x 6'-8"	BI-FOLD	4

USE INSULATED GLASS FOR ALL WINDOWS

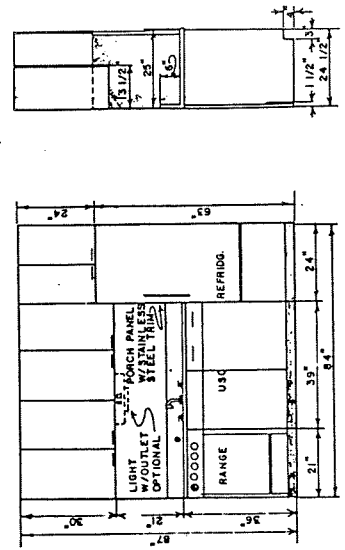


PERSPECTIVE (NO SCALE)

COOPERATIVE EXTENSION SERVICE
AGRICULTURE AND HOME ECONOMICS
AND
UNITED STATES DEPARTMENT OF AGRICULTURE COOPERATING
FOR INDEPENDENT LIVING
MD '87 7268 SHEET 3 OF 8
OPTION 2 WITH USDA PLAN 7239



SCALE 3/32" = 1'-0"
 NOTE: PROPOSED ADDITION SHOWN WITH USDA PLAN 7246



EXAMPLE: STANDARD KITCHEN MODULE
 WALL CABINETS
 (8 1/4" HIGH, 12" OR 24" DEEP,
 WIDTH RANGES FROM 12" - 24")

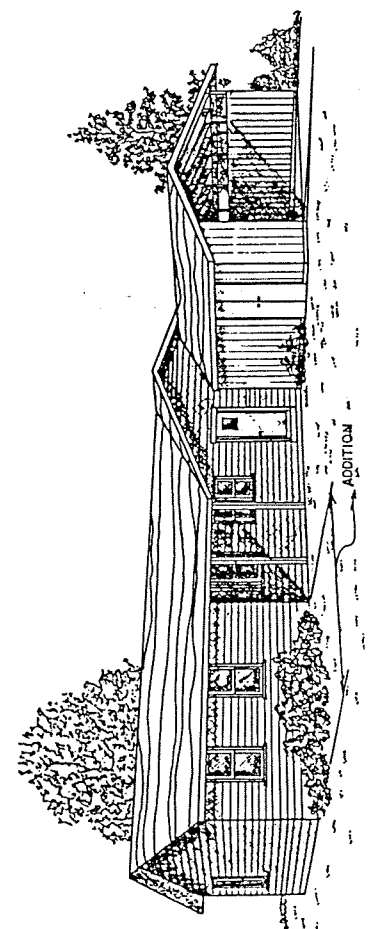
NOTE:
 MODULAR KITCHENS IDEAL FOR SENIOR CITIZEN APARTMENTS. CONVENIENT OPERATION, DURABLE, FUNCTIONAL STYLING, AND LOW MAINTENANCE. FEATURE ELECTRIC OR GAS RANGE, OPEN COUNTERTOP STINK WITH GARBAGE DISPOSAL, REFRIGERATOR, AND OPTIONAL UPPER CABINET. MODELS AVAILABLE UP TO 8 FEET IN WIDTH. LARGER MODELS GIVE MORE CABINET SPACE AND GREATER CUBIC FEET IN REFRIGERATOR.
 * FLOOR TO CEILING CABINETS CONVENIENT FOR EXTRA STORAGE.

WINDOW SCHEDULE	
MARK	DESCRIPTION
A	3'-4" x 4'-6" DOUBLE-HUNG
B	2'-8" x 3'-2" DOUBLE-HUNG

DOOR SCHEDULE	
MARK	DESCRIPTION
1	3'-0" x 6'-8" FLUSH EXTERIOR-GLAZED
2	2'-8" x 6'-8" INTERIOR HOLLOW-CORE
3	2'-8" x 6'-8" INTERIOR HOLLOW-CORE
4	1'-6" x 6'-8" SLIDING WOOD DOOR
5	1'-0" x 6'-8" BI-FOLD

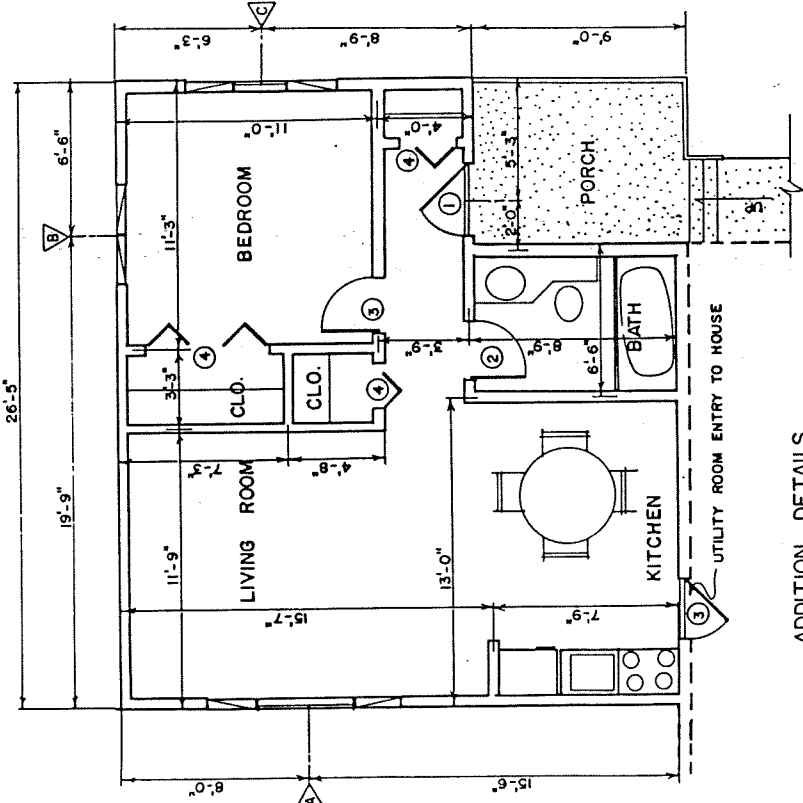
USE INSULATED GLASS ON ALL WINDOWS

EXISTING KITCHEN
 ADDITION DETAILS SCALE 1/4" = 1'-0"



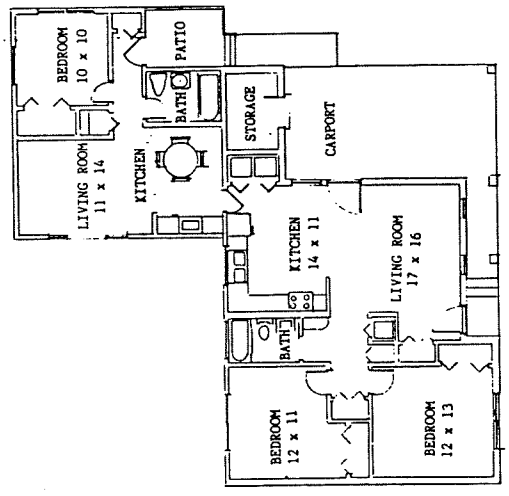
PERSPECTIVE (NO SCALE)

COOPERATIVE EXTENSION SERVICE
 AGRICULTURE AND HOME ECONOMICS
 UNITED STATES DEPARTMENT OF AGRICULTURE COOPERATING
 REAR ADDITIONS
 FOR INDEPENDENT LIVING
 MD '87 7268 SHEET 4 OF 8
 OPTION 3 WITH USDA PLAN 7246



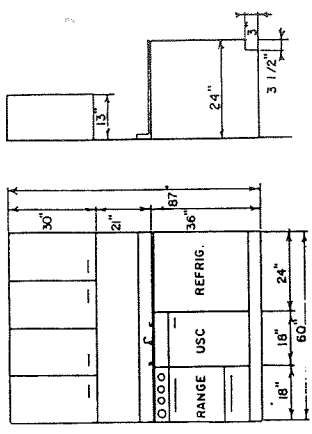
ADDITION DETAILS

SCALE 1/4" = 1'-0"



SCALE 3/32" = 1'-0"

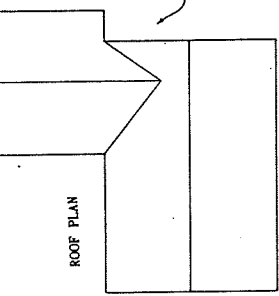
NOTE: PROPOSED ADDITION SHOWN WITH USDA PLAN 7204



KITCHEN DETAIL (NO SCALE)

*NOTE:

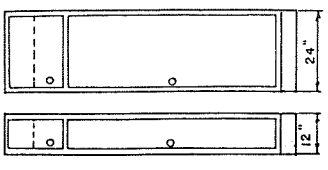
MODULAR KITCHENS IDEAL FOR SENIOR CITIZEN APARTMENTS. CONVENIENT OPERATION, DURABLE, FUNCTIONAL STYLING AND LOW MAINTENANCE. FEATURE ELECTRIC OR GAS RANGE, OVEN, COUNTERTOP SINK WITH GARBAGE DISPOSAL, REFRIGERATOR AND OPTIONAL UPPER CABINET. MODELS AVAILABLE UP TO 8 FEET IN WIDTH. LARGER MODELS GIVE MORE CABINET SPACE AND GREATER CUBIC FEET FOR REFRIGERATOR. FLOOR TO CEILING CABINETS CONVENIENT FOR EXTRA STORAGE.



ROOF PLAN

PERSPECTIVE VIEW

USE INSULATED GLASS FOR ALL WINDOWS

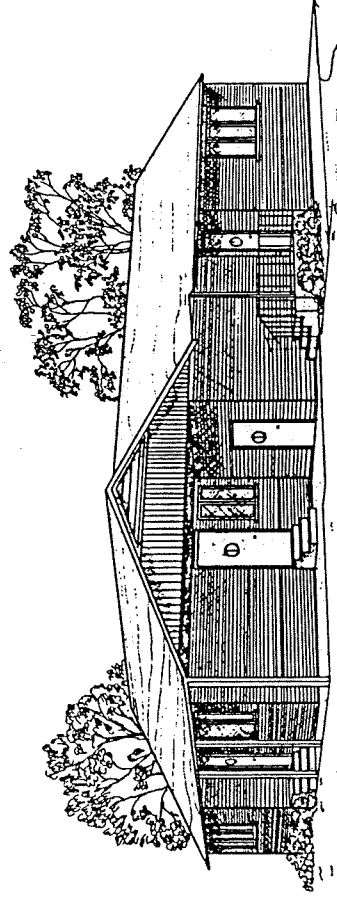


WALL CABINETS (8'-4" HIGH, 12" OR 24" DEEP WIDTH RANGES FROM 12"-24")

WINDOW SCHEDULE			
MARK	SIZE	DESCRIPTION	#REQ.
A	8'-0" x 4'-0"	WOOD CASEMENT	1
B	4'-3" x 3'-0"	WOOD CASEMENT	1
C	3'-0" x 4'-0"	WOOD CASEMENT	2

DOOR SCHEDULE			
MARK	SIZE	DESCRIPTION	#REQ.
1	3'-0" x 6'-8"	EXTERIOR SOLID CORE	1
2	2'-6" x 6'-8"	INTERIOR HOLLOW CORE	1
3	2'-8" x 6'-8"	INTERIOR HOLLOW CORE	2
4	1'-0" x 6'-8"	BI-FOLD	4

USE INSULATED GLASS FOR ALL WINDOWS



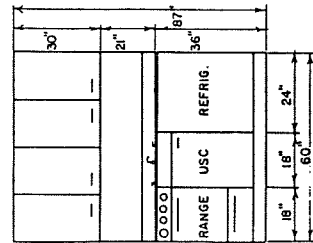
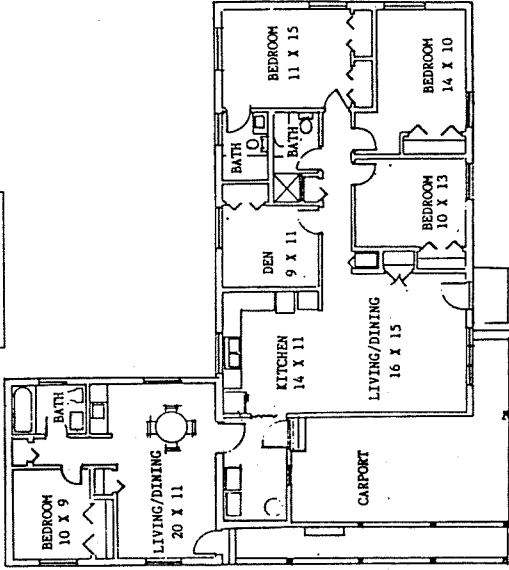
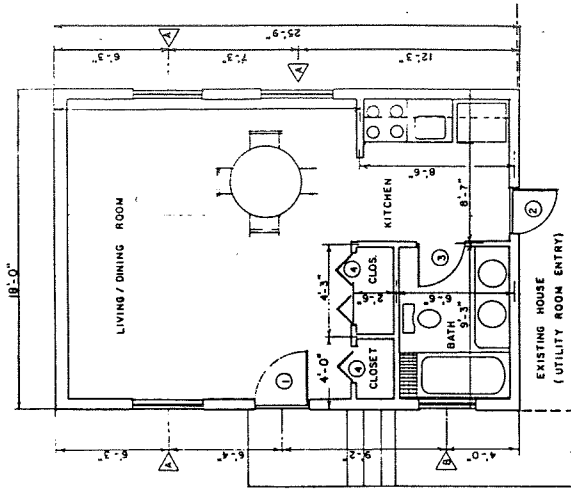
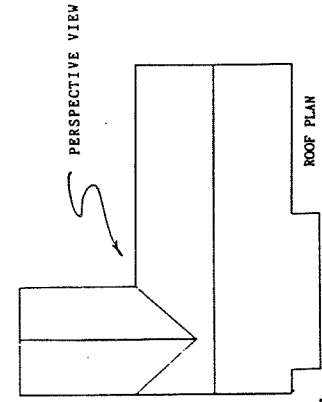
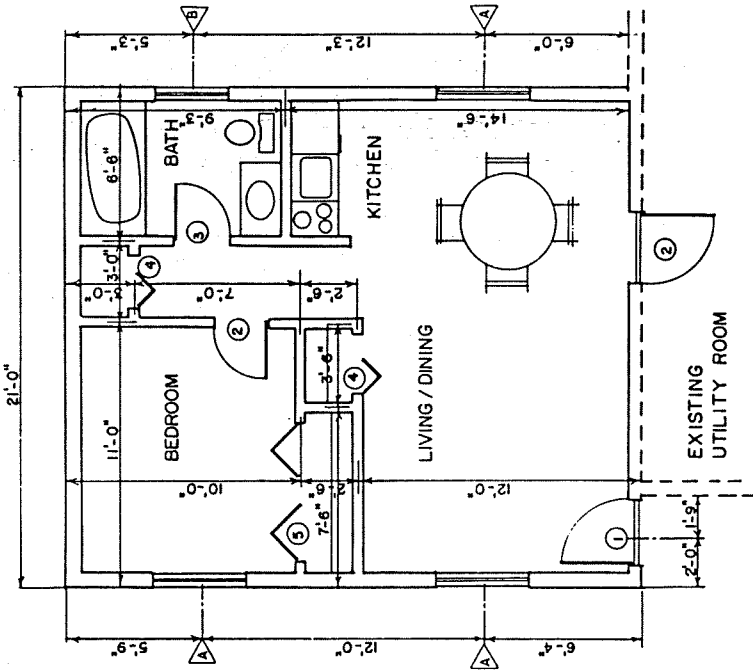
PERSPECTIVE (NO SCALE)

COOPERATIVE EXTENSION SERVICE
 AGRICULTURE AND HOME ECONOMICS

AND
 UNITED STATES DEPARTMENT OF AGRICULTURE COOPERATING

REAR ADDITIONS
 FOR INDEPENDENT LIVING

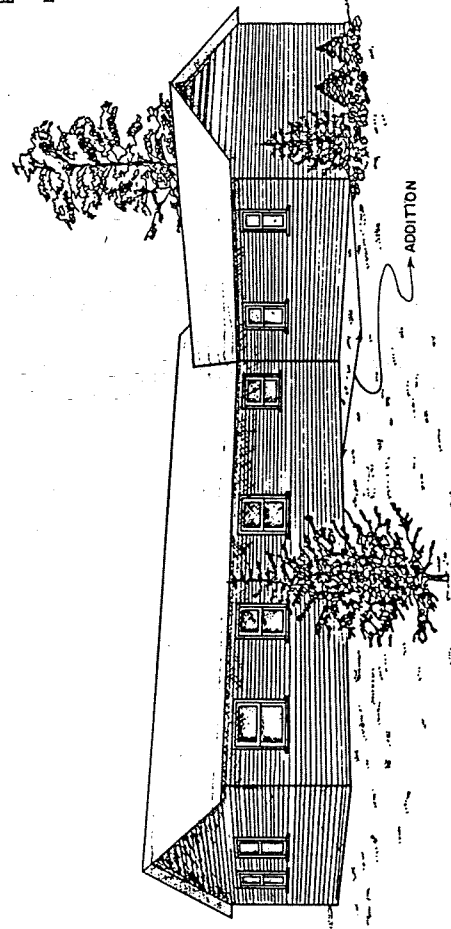
MD '87 7268 SHEETS OF 8
 OPTION 4 WITH USDA PLAN 7204



*NOTE: MODULAR KITCHENS IDEAL FOR SENIOR CITIZEN APARTMENTS. CONVENIENT OPERATION, DURABLE, FUNCTIONAL STYLING AND LOW MAINTENANCE. FEATURE ELECTRIC OR GAS RANGE, OVER-COUNTER TOP SINK WITH GARBAGE DISPOSAL, REFRIGERATOR AND OPTIONAL UPPER CABINET. MODELS AVAILABLE UP TO 8 FEET IN WIDTH. LARGER MODELS GIVE MORE CABINET SPACE AND GREATER CUBIC FEET IN REFRIGERATOR. FEEL FREE TO CEILING CABINETS CONVENIENT FOR EXTRA STORAGE.

MARK	SIZE	DESCRIPTION	#REQ.
A	4'-0" x 4'-0"	DOUBLE-HUNG	3
B	3'-0" x 4'-0"	DOUBLE-HUNG	1

WINDOW SCHEDULE		DOOR SCHEDULE	
MARK	DESCRIPTION	DESCRIPTION	#REQ.
1	3'-0" x 6'-8"	EXTERIOR WOOD SOLID CORE	1
2	2'-8" x 6'-8"	INTERIOR WOOD HOLLOW CORE	2
3	2'-6" x 6'-8"	INTERIOR WOOD HOLLOW CORE	2
4	1'-0" x 6'-8"	BI-FOLD	2
5	1'-6" x 6'-8"	BI-FOLD	2



COOPERATIVE EXTENSION SERVICE
AGRICULTURE AND HOME ECONOMICS

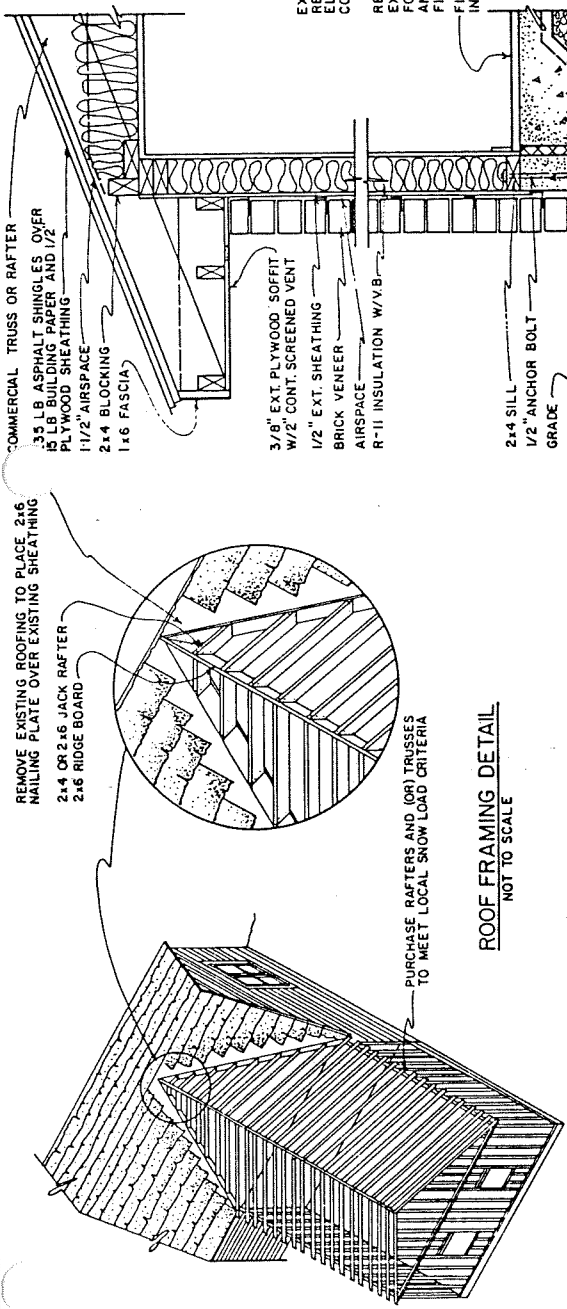
UNITED STATES DEPARTMENT OF AGRICULTURE COOPERATING

REAR ADDITIONS
FOR INDEPENDENT LIVING

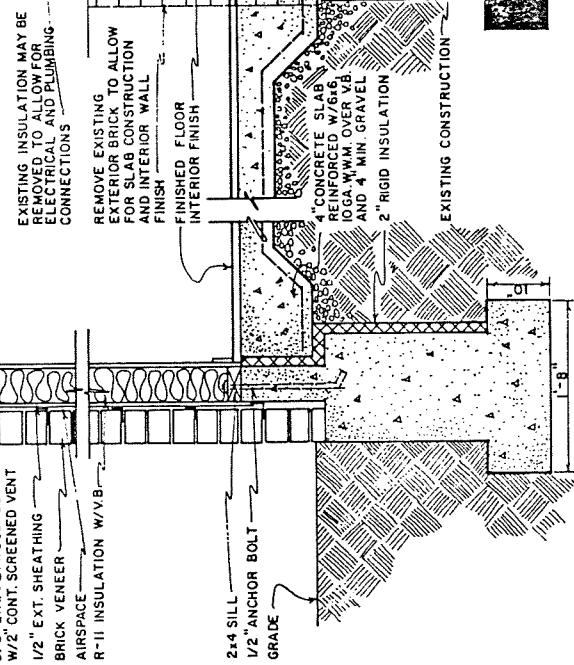
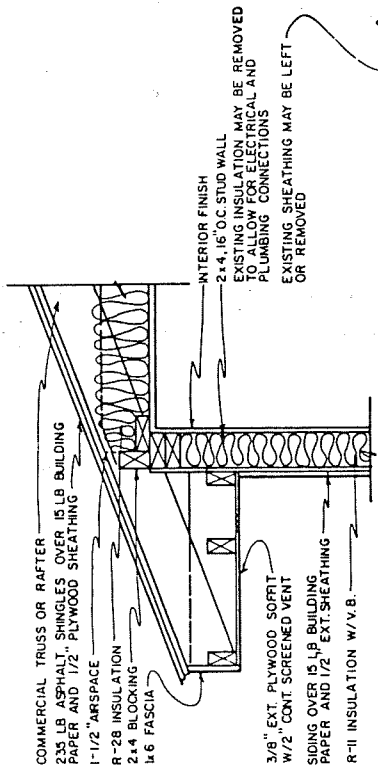
MD '87 7268 SHEET 6 OF 8

OPTION 5/5B WITH USDA PLAN 7202

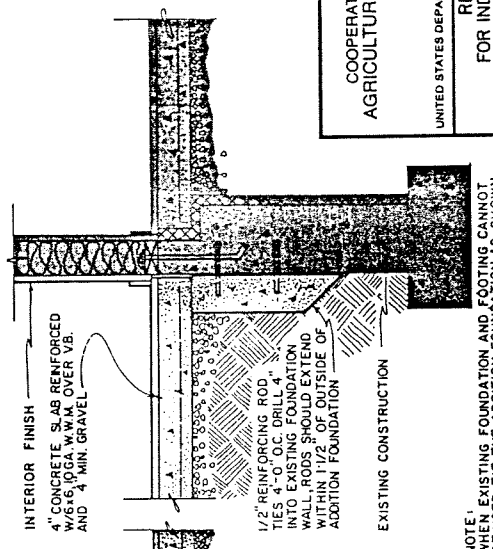
USE INSULATED GLASS FOR ALL WINDOWS



ROOF FRAMING DETAIL
 NOT TO SCALE



BRICK VENEER / SLAB ON GRADE
 SCALE 1" = 1'-0"



WOOD FRAME / SLAB ON GRADE
 SCALE 1" = 1'-0"

NOTE: EXISTING FOUNDATION AND FOOTING CANNOT BE USED, TIE THE ADDITION FOUNDATION AS SHOWN

CONSTRUCTION CHECK LIST

1. CHECK LOCAL BUILDING CODE AND LOAN COMPANY CRITERIA. PURCHASE TRUSSES TO MEET LOCAL SNOW LOAD CRITERIA.
2. ADEQUATELY NAIL AND ANCHOR JOINTS.
3. DOUBLE JOISTS UNDER TRUSSES AND OTHER HEAVY LOADS.
4. SHEATH CORNERS WITH 1/2" PLYWOOD OR HIGH DENSITY FIBERBOARD OR USE DIAGONAL BRACING.
5. USE EXTERIOR GLUED PLYWOOD WHEREVER IT MAY BE WETTED DURING OR AFTER CONSTRUCTION.
6. PRESSURE TREAT ALL WOOD WITH GROUND CONTACT AND PROVIDE OTHER NEEDED TERMITE CONTROL.
7. R VALUES DEPEND ON LOCAL CLIMATE AND FUEL COSTS.
8. PROVIDE 1 SQ FT OF ATTIC VENT OPENINGS FOR EACH 150 SQ FT OF CEILING.
9. WEATHERIZE ALL OPENINGS AND JOINTS.

COMMERCIAL TRUSSES OR RAFTER
235 LB ASPHALT SHINGLES OVER 15 LB BUILDING PAPER AND 1/2" PLYWOOD SHEATHING
1-1/2" AIRSPACE
R-28 INSULATION
2-4" BLOCKING
1-6" FASCIA

3/8" EXT PLYWOOD SOFFIT
W/2" CONT SCREENED VENT
1/2" EXT SHEATHING
15 LB BUILDING PAPER
SIDING
R-11 INSULATION W/V.B.

R-19 INSULATION
2x10 HEADER
2x8 SILL
1/2" ANCHOR BOLT
8x8x16 CONCRETE BLOCK*
FILL TOP CORES W/CONCRETE

GRADE
CARRY FOOTING TO FIRM BASE
BELOW FROST LINE

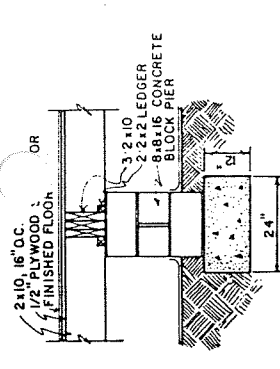
INTERIOR FINISH
2x4,16" O.C. STUD WALL
EXISTING INSULATION MAY BE REMOVED TO ALLOW FOR ELECTRICAL AND PLUMBING CONNECTIONS
EXISTING EXT SHEATHING MAY BE LEFT OR REMOVED
FINISHED FLOOR
1/2" PLYWOOD SUBFLOOR

INTERIOR FINISH
2x4,16" O.C.
EXISTING INSULATION MAY BE REMOVED TO ALLOW FOR ELECTRICAL AND PLUMBING CONNECTIONS
EXISTING SHEATHING MAY BE LEFT OR REMOVED
FINISHED FLOOR
1/2" PLYWOOD SUBFLOOR

USE JOIST HANGERS ATTACHED TO EXISTING HEADER OR REMOVE HEADER AND OVERLAP ADDITION FLOOR JOISTS WITH EXISTING FLOOR JOISTS

EXISTING CONSTRUCTION

WOOD FRAME W/CRAWL SPACE
SCALE 1" = 1'-0"



BEAM & PIER DETAIL
SCALE 1/2" = 1'-0"

COMMERCIAL TRUSSES OR RAFTER
235 LB ASPHALT SHINGLES OVER 15 LB BUILDING PAPER AND 1/2" PLYWOOD SHEATHING
1-1/2" AIRSPACE
R-28 INSULATION
2-4" BLOCKING
1-6" FASCIA

3/8" EXT. PLYWOOD SOFFIT
W/2" CONT SCREENED VENT
1/2" EXT SHEATHING
BRICK VENEER
AIRSPACE
R-11 INSULATION W/V.B.

R-19 INSULATION
2x10 HEADER
2x8 SILL
1/2" ANCHOR BOLT
8x8x16 CONCRETE BLOCK*
FILL TOP CORES W/CONCRETE

GRADE
CARRY FOOTING TO FIRM BASE
BELOW FROST LINE

EXISTING INSULATION MAY BE REMOVED TO ALLOW FOR ELECTRICAL AND PLUMBING CONNECTIONS
EXISTING EXT SHEATHING MAY BE LEFT OR REMOVED
FINISHED FLOOR
1/2" PLYWOOD SUBFLOOR
INTERIOR FINISH

2x10,16" O.C.
VAPOR BARRIER
BRICK LEFT TO ACT AS FOUNDATION WALL FOR NEW CONSTRUCTION

EXISTING CONSTRUCTION

BRICK VENEER W/CRAWL SPACE OR BASEMENT
SCALE 1" = 1'-0"

COOPERATIVE EXTENSION SERVICE AGRICULTURE AND HOME ECONOMICS			
UNITED STATES DEPARTMENT OF AGRICULTURE COOPERATING			
REAR ADDITIONS FOR INDEPENDENT LIVING			
MD '87	7268	SHEET 8 OF 8	