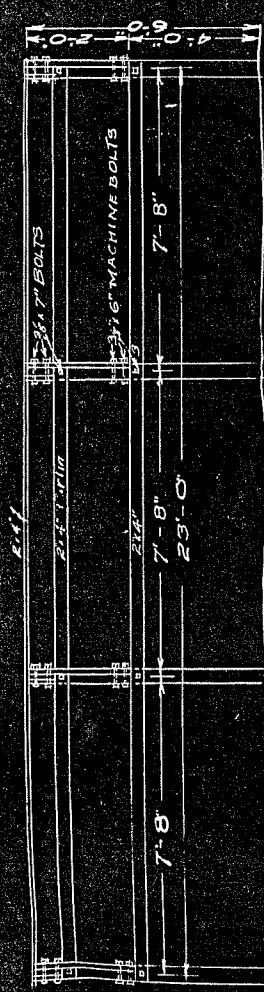
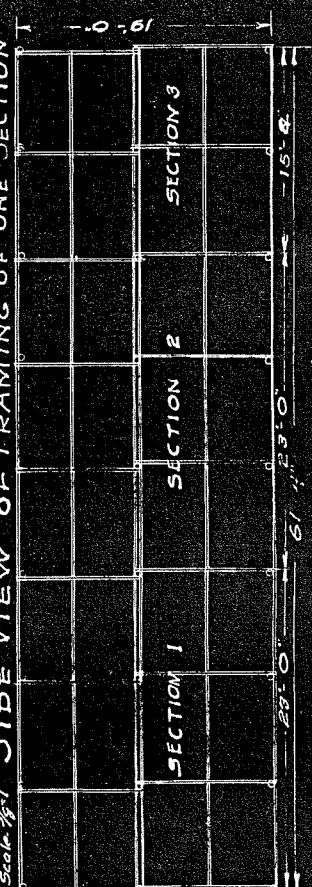


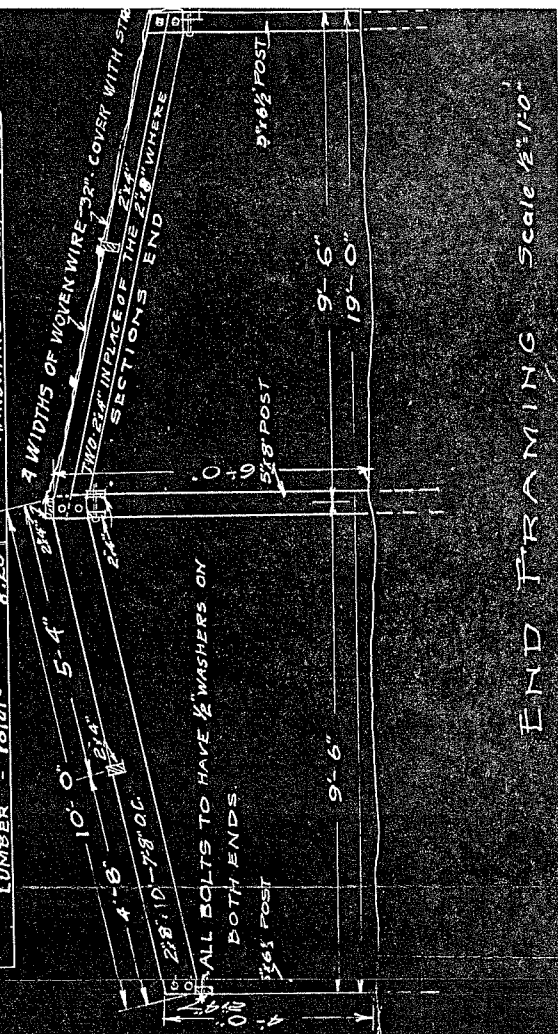
MATERIALS FOR 19'0" X 23' SECTION					
No.	Size	Description	Qty	Costs	Total
4	5.8"	Center Posts	160	1.60	1.60
8	5.8"	Side Posts	304	2.40	2.40
9	2.5"	Center Posts	19	0.95	0.95
4	2.5"	Center Posts	22	1.10	1.10
4	2.5"	Center Posts	43	2.15	2.15
LUMBER - TOTAL -					8.20
HARDWARE - TOTAL -					47.45



Scale 3/4" = 1' SIDE VIEW OF FRAMING OF ONE SECTION



Scale 1/2" = 1' PLAN VIEW AND ROOF FRAMING



END FRAMING Scale 1/2" = 1'

NORTH DAKOTA AGRICULTURAL COLLEGE

DEMOUNTABLE ROOF FRAME OF STRAWBRED FOR PASTURE SHADE FOR HOGS
To remove roof framing remove bolts in rafters and roll the rafters and woven wire into rolls.

APPROVED BY
Designed by J. L. Miller, Eng. 3/24/21
Detailed by J. C. Miller
Traced by R. M. FLAHERTY
Scale - See each view