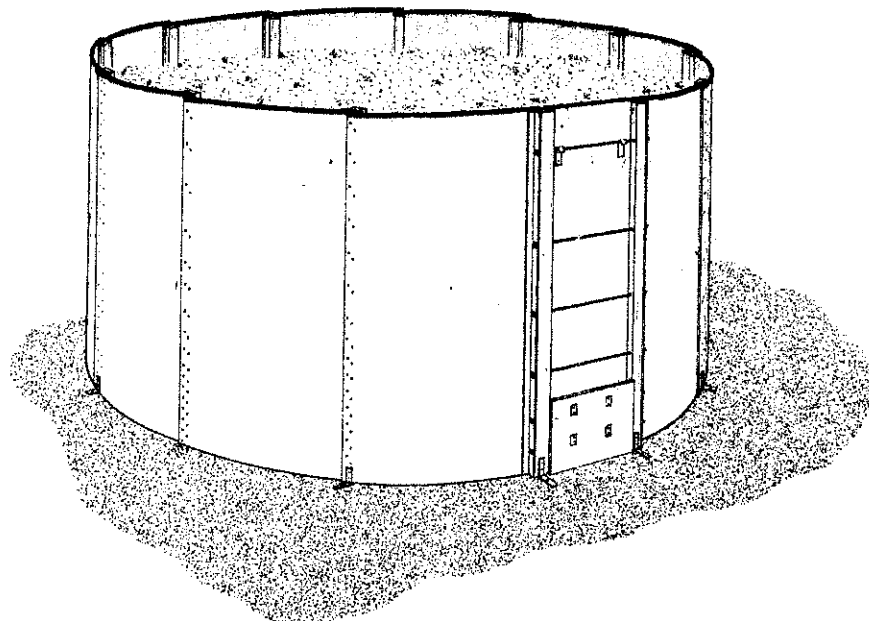


1 for management information see leaflet 8421



LIST OF DRAWINGS

sheet no.	title
1	CIRCULAR PORTABLE FERTILIZER BIN - 8 FEET HIGH
2	PLAN & ELEVATION
3	NAILING SCHEDULES & DETAILS

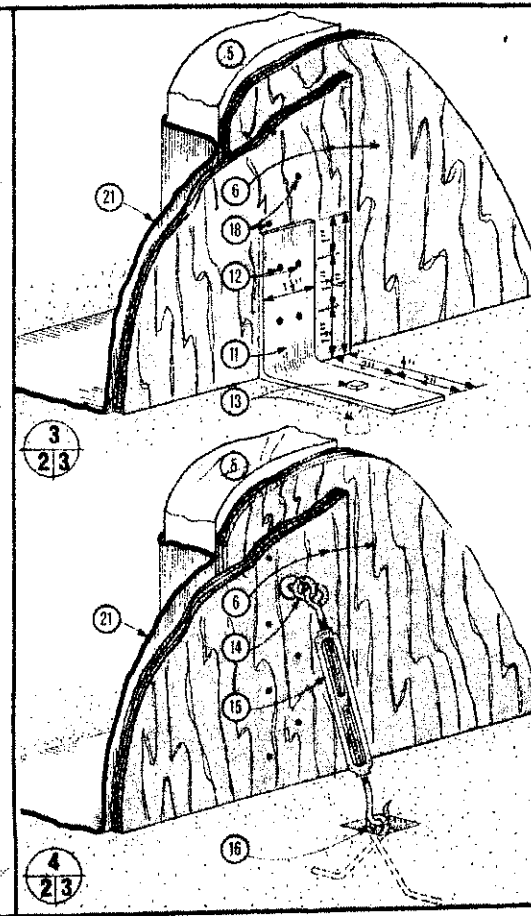
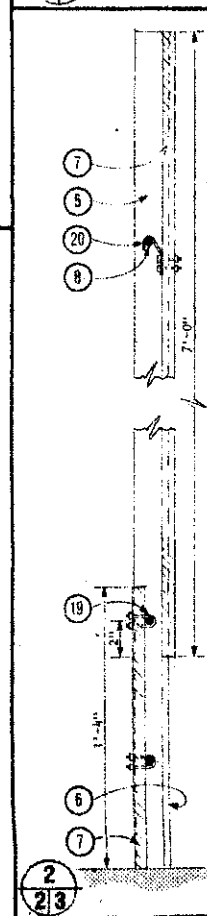
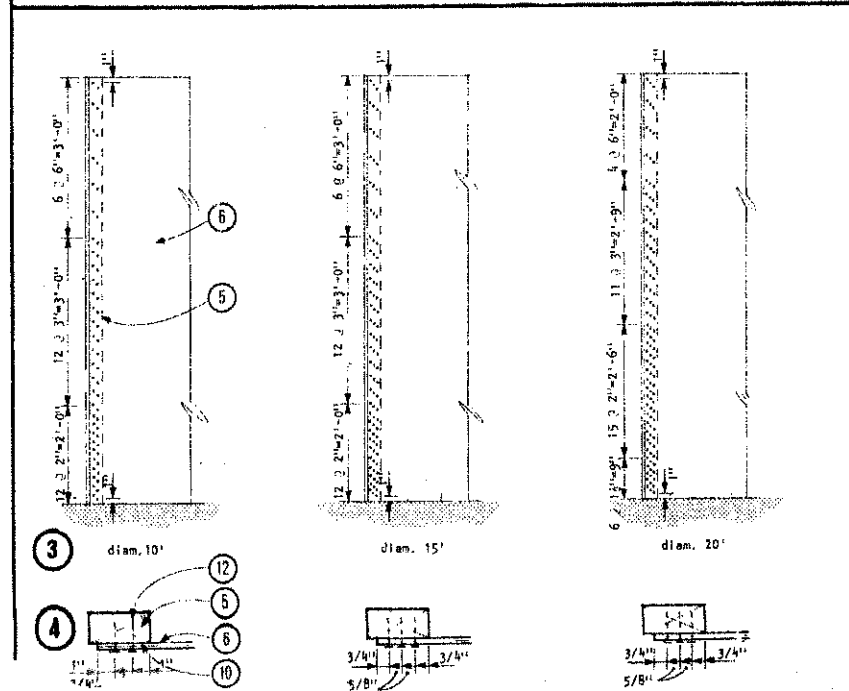
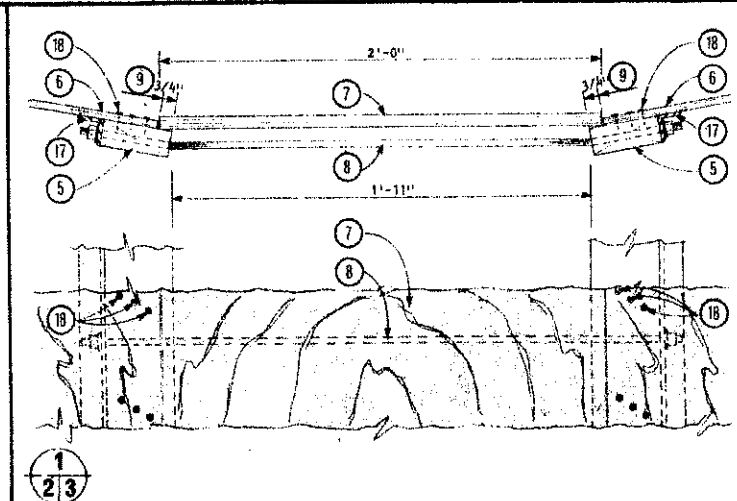
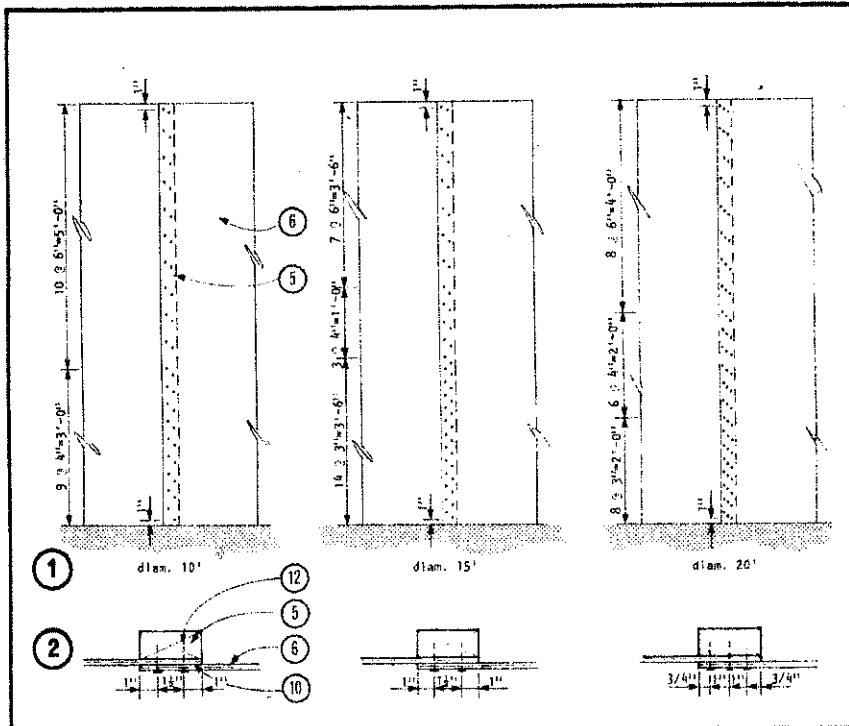
SYM	REVISIONS	CHECKED	DATE	APPROVED



CIRCULAR PORTABLE FERTILIZER BIN - 8 FEET HIGH

DESIGNED <i>JET</i>	DATE: JULY/77	PLAN
DRAWN <i>R. PELLA</i>	REVISED	8421
TRACED	DETAIL SUPPLIED	SHEET 1 OF 3
CHECKED <i>H.A.J.</i>	DATE: 10/77	





- 1 nailing schedules for typical lap joint, alternate bin diameters, seen from outside
- 2 typical nail spacing for schedules 1
- 3 nailing schedules for joint at access door, alternate diameters, seen from inside
- 4 typical nail spacing for schedules 3
- 5 2" x 4" nailing strips, 1 at each joint
- 6 5/16" 'sheathing' grade exterior fir plywood bin walls
- 7 3/4" 'sheathing' grade exterior fir plywood access door panels
- 8 3/4" diam. x 3'-0" threaded rod, bright plated and oiled
- 9 set back plywood for access door
- 10 joint line
- 11 anchor cut from 4" x 4" x 1/2" steel angle
- 12 1 1/2" large head galv. roofing nails
- 13 5/16" x 2" anchor bolt and lead expansion shield to match
- 14 3/8" galv. eyebolt and washers
- 15 3/8" galv. turnbuckle hook, all as req'd.
- 16 anchor recessed in floor; from #3 rebar, rustproof painted
- 17 1 1/2" x 1 1/2" x 3/16" x 8" steel angle
- 18 1 1/2" large head galv. roofing nails, see nailing schedules 1 or 3
- 19 4 - U-bolts and straps, secure plywood to threaded steel rod, remove nuts to open
- 20 steel strap hook from 3/16" x 1" stock, 2 bolts to plywood
- 21 polyethylene liner for fertilizer tending to absorb moisture

SYM	REVISIONS	CHECKED	DATE	APPROVED
<b>NAILING SCHEDULES &amp; DETAILS</b>				
DESIGNED <i>JET</i>	DATE JULY/77	PLAN		
DRAWN <i>R. PELLA</i>	REVISED	8421		
TRACED	DETAILS DRAWN BY		SHEET 3 OF 3	
CHECKED <i>H.A.J.</i>	DATE			