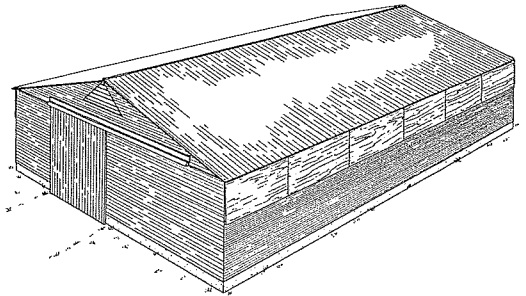
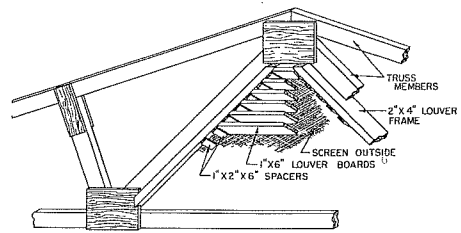


ITEM	DESCRIPTION	NO.	FBM
Concrete			
Foundation	Cu. yards	8 3/4	
Floor	Cu. yards	18	
Foundation Insulation	20" wide, Ft.	156	
Anchor Bolts	2" x 12"	28	
Sill	2" x 6" x 16'-0" Pressure-treated	9	96
Studs	2" x 4" x 7'-0"	76	354 2/3
Plats	2" x 6" x 16'-0"	20	213 1/3
Knee Braces	2" x 6" x 7'-0"	10	70
Trusses	See Page 3	13	
Girts	2" x 6" x 12'-0"	56	448
Sliding	Sq. ft.	916	
Vent. Doors	5/8" x 4" x 8' c-c, Ext. Plywood	12	
	2" x 4" x 16'-0"	12	128
	4" Hooks	24	
	5" Extra Heavy "I" Hinge	36	
Roofing	Sq. ft.	1536	
	Lv. Ft. Eaves trough	56	
Louvers	2" x 6" x 7'-0"	4	18 2/3
	1" x 6" x 12'-0"	14	84
	1" x 2" x 14'-0"	2	4 2/3
	Sq. ft. Screen	48	
Interior Lining	Sq. ft.	352	
Ceiling	Sq. ft.	1440	
Insulation	1" Bat, Sq. ft.	352	
	2" Bat, Sq. ft.	1440	
Doors	2" x 6" x 14'-0"	2	28
	2" x 6" x 8'-0"	4	21 1/3
	1" x 6" x 8'-0" T&G	42	164
	Fleshing, Ln. Ft.	36	
	2" x 10" x 18'-0"	2	60
Pens	Track & hangers	13	
	2" x 4" Pipe	13	
	2" x 12" Pipe	13	
	2" x 1" x 4" Strap	20	
	3/8" x 3" Pipe & Tee	20	
	1" x 6" x 16'-0"	9	72
	1" x 6" x 16'-0"	24	256
Drainage	Droins	3	
Ventilation Duct	6" C.I. Pipe as required	11	58 2/3
	2" x 4" x 8' Panel	81	
	2" x 4" Bolts	36	

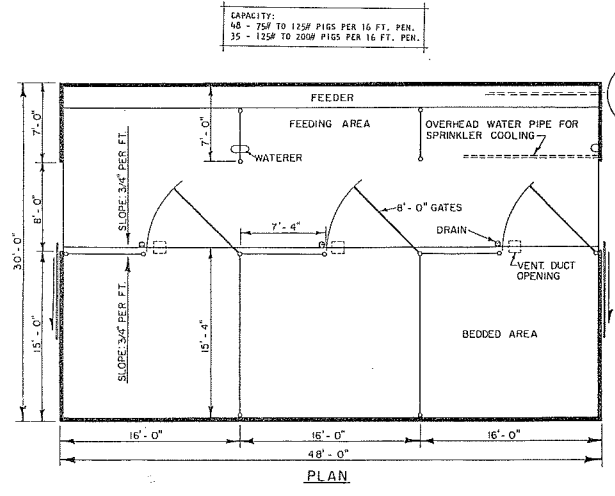
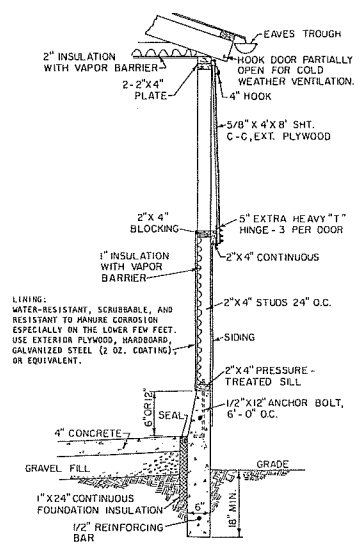
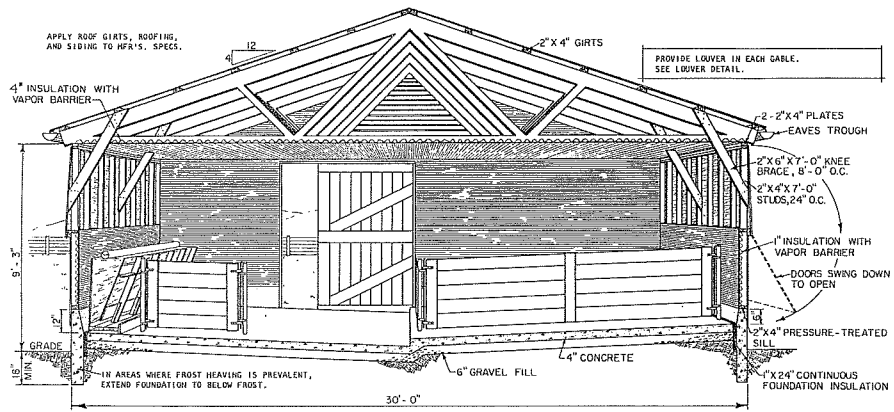


30' CONFINEMENT FINISHING UNIT

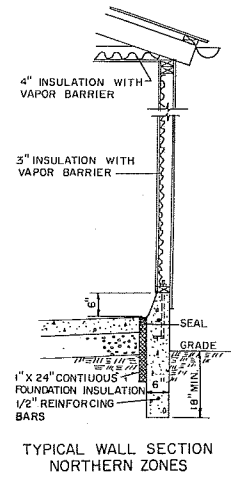
PLAN NO. 72674



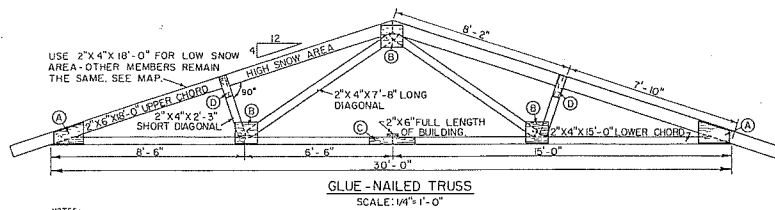
TYPICAL LOUVER CONSTRUCTION



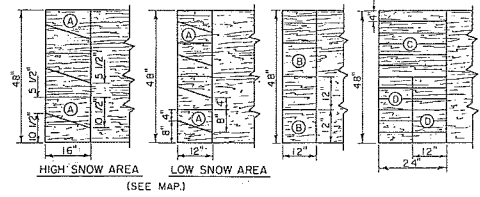
CAPACITY:
48 - 75# TO 125# PIGS PER 16 FT. PEN.
35 - 125# TO 200# PIGS PER 16 FT. PEN.



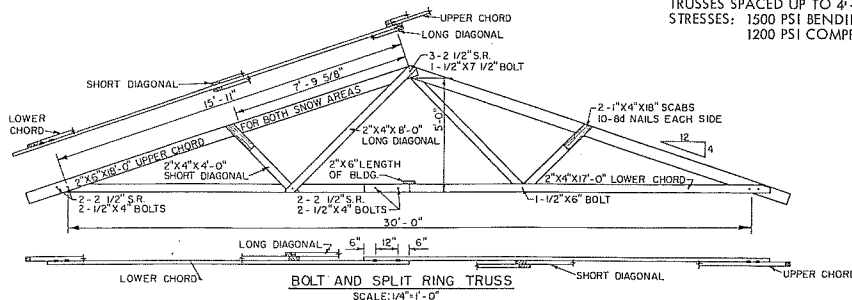
MIDWEST PLAN SERVICE	
Cooperative Extension Work in Agriculture and Home Economics and Agricultural Experiment Stations of North Central Region - USDA Cooperating	
30' CONFINEMENT FINISHING UNIT	
Mar '63	Sheet 1 of 2 Sheets
MIDWEST PLAN NO. 72674	



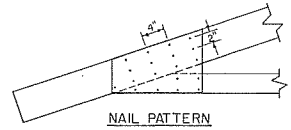
- GLUE-NAILED TRUSS**
SCALE: 1/4"=1'-0"
- NOTES:
1. Glue and nail 1/2" exterior plywood gusset plates on both sides of all joints.omit plates on the outside face of the two gable-end trusses.
 2. Use type "A" casein or resorcinol resin glue and 6d box nails.
 3. Mix glue according to manufacturer's specifications and apply to both surfaces to be joined.
 4. Select members which are relatively straight, smooth, and clean. Moisture content should not exceed 15%. Fabricate in a room or outdoor temperature above 70° F.
 5. All truss members are in the same plane and all joints are butt joints.
 6. Truss members are cut to length, and the truss is assembled in a jig in a horizontal position.
 7. The assembled truss may be moved carefully from the jig immediately after gusset plates have been applied.
 8. Leave trusses stacked in horizontal position for at least 24 hours after assembly.



CUTTING DIAGRAMS FOR GUSSETS



TRUSSES SPACED UP TO 4'-0" O.C.
STRESSES: 1500 PSI BENDING
1200 PSI COMPRESSION



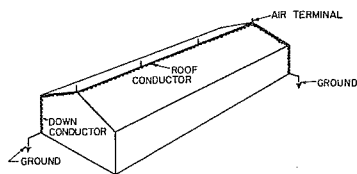
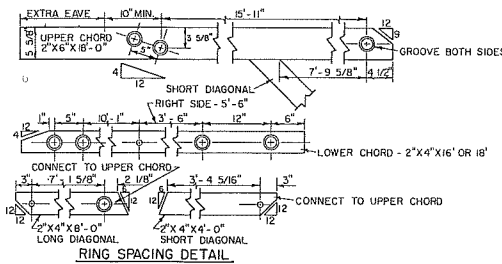
NAIL PATTERN

BILL OF MATERIALS

ITEM	NO.	DESCRIPTION
GLUE & NAILED TRUSS		
Upper Chord	2	2" x 6" x 18' - 0"
	2	2" x 4" x 18' - 0"
	2	2" x 4" x 18' - 0"
Lower Chord	2	2" x 4" x 18' - 0"
Long Diagonal	2	2" x 4" x 7' - 6"
Short Diagonal	1	2" x 4" x 2' - 3"
Plywood	1	Sheet 1/2" c-c, Ext.
Glue	1 lb.	Casein Type "A" or Resorcinol Resin

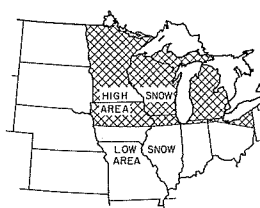
ITEM	NO.	DESCRIPTION
RING & BOLT TRUSS		
Upper Chord	2	2" x 6" x 18' - 0"
Lower Chord	1	2" x 4" x 18' - 0"
Long Diagonal	2	2" x 4" x 7' - 6"
Short Diagonal	2	2" x 4" x 2' - 3"
Scabs	1	1" x 4" x 6" - 0"
Split Rings	9	2 1/2"
Bolts & Washers	1	1/2" x 7 1/2"
	6	1/2" x 3"
	2	1/2" x 6"

- NOTES:
1. Use 2 1/2" split ring (S. R.) connectors and 1/2" bolts where shown.
 2. Use a special grooving tool with a 1/2" electric drill.
 3. Measure and drill accurately.
 4. Cut, drill, and groove for each member shown by the ring spacing detail for each truss required.



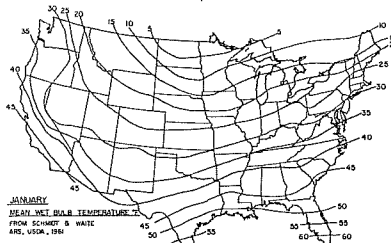
LIGHTNING PROTECTION FOR GABLE ROOFS

- Air Terminals**
At least 24" long.
Up to 25' apart.
1/2" copper or 5/8" aluminum.
5/8" copper tubing, wall thickness over 0.032"
- Conductors**
Copper: 17 AWG wires, 18 3/4#/1000'.
Aluminum: 14 AWG wires, 55#/1000'.
Two down conductors, minimum, on opposite corners.
For bldgs. over 110' long, use one down conductor per 50' add'l length.
- Grounds**
One ground per down conductor.
Rods buried at least 10".
If water pipe enters bldg, bond at least one down conductor to it.
- Metal Roofs**
Ground metal roofs without air terminals by attaching 18# of conductors to roofing with 2-3/8" J or U bolts. Ground down conductors as with air terminals.
- Master Label**
For maximum lightning protection obtain a Master Label System as approved by the Underwriters' Laboratories, Inc.



SNOW LOAD MAP

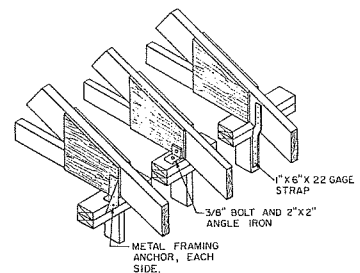
WINTER CONDITIONS: 50°, 75% RH inside.
Outside temperature from map.



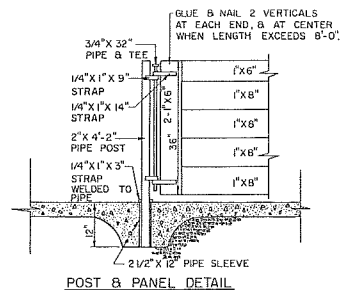
Temp. Zone	Wall Type*	Average Winter Vent. rate, cfm
5° F	Northern	700
10	Northern	800
15	Northern	900
20	Southern	500
25	Southern	800

*See Typical Wall Section Details

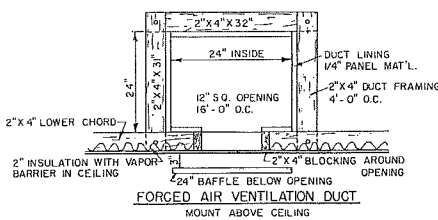
SUMMER CONDITIONS: Provide 20 cfm per animal fan capacity for closed units.



TRUSS AT ATTACHMENT



POST & PANEL DETAIL



MIDWEST PLAN SERVICE
Cooperative Extension Work in Agriculture and Home Economics and Agricultural Experiment Stations of North Central Region - USDA Cooperating

30' CONFINEMENT FINISHING UNIT

Mar '63 Sheet 2 of 2 Sheets
MIDWEST PLAN NO. 72674

Copyright © 1963 Midwest Plan Service