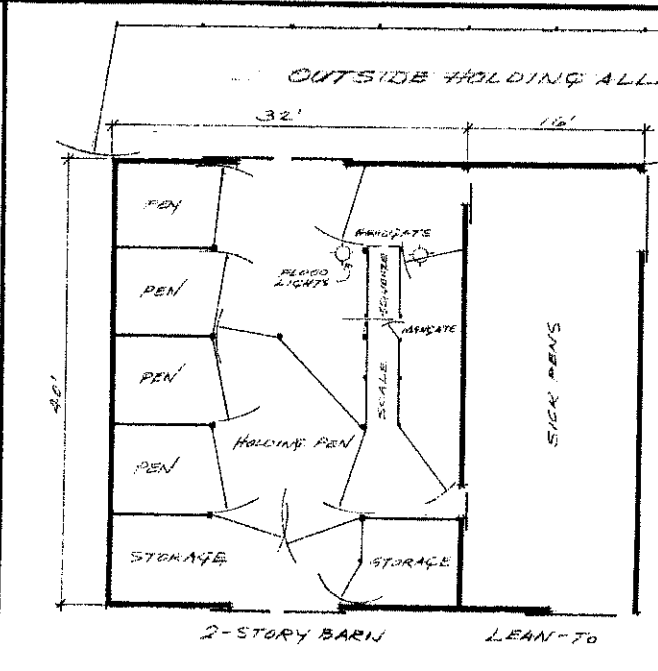
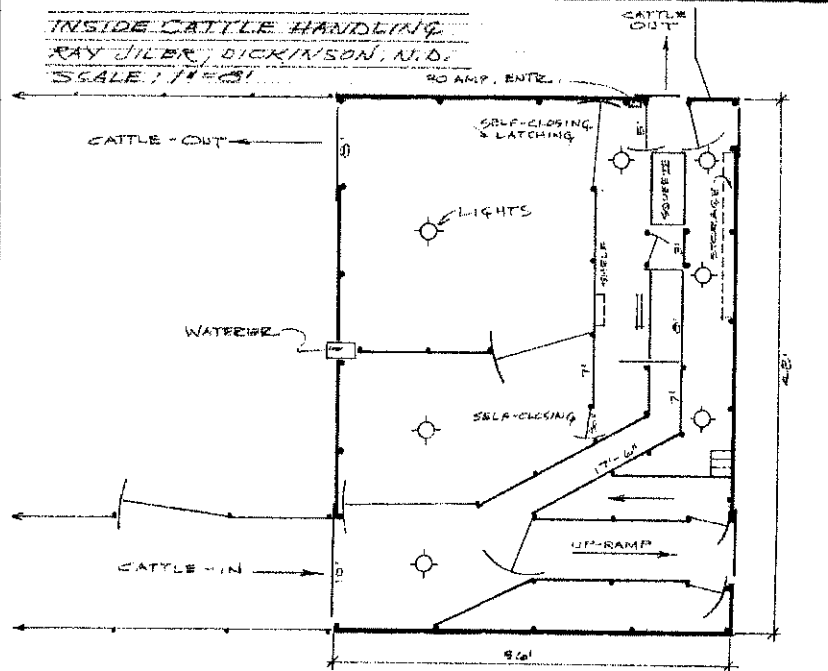
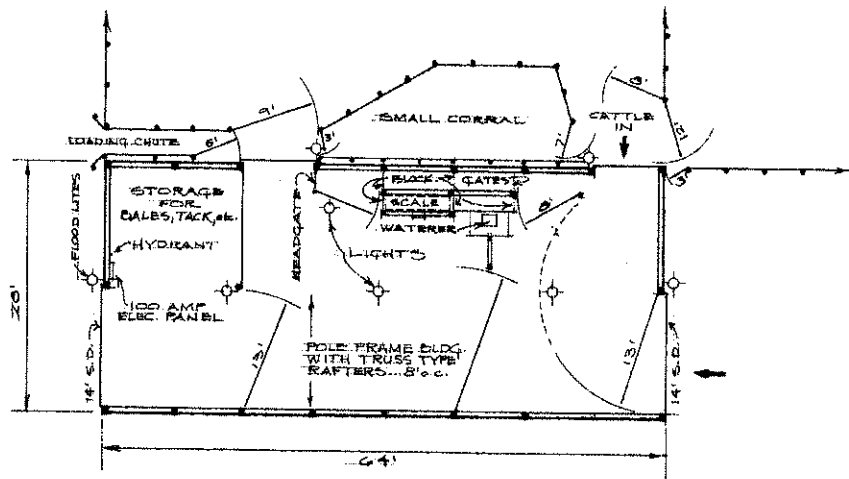


CATTLE WORKING-TREATING BUILDING
 FLOYD DRYAN
 HI-VIEW ANGUS FARM, BOWBILLS
 8/23/74

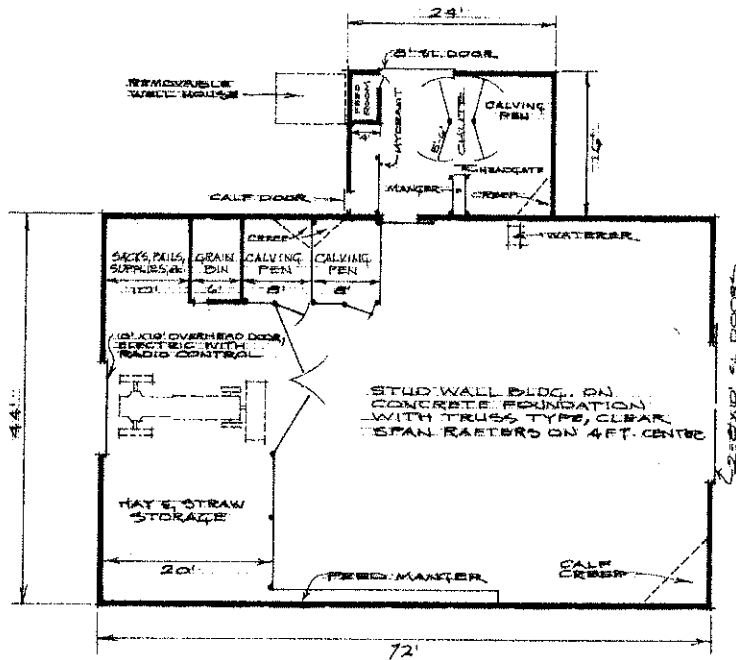


INSIDE CATTLE HANDLING
 KEN SCOTT, SPIRITWOOD, N.D.
 SCALE 1" = 8'

| | | | |
|---|---------------------------|----------------------|-------------|
| CATTLE HANDLING/CALVING BARN | | | |
| 5 SYSTEMS w/ CHUTES | SCALE 1" = 8' | DRAWN BY P. COLLETTE | REVISED |
| PREPARED BY NDSU EXTENSION/AGR. ENGR. DEPT. | | | |
| DATE 8/24/74 | APPROVED BY N.D. 724-1-14 | DRAWING NUMBER | SHT. 1 of 2 |



CATTLE WORKING BARN
PAUL HAROLDSON, COLEAU, N.D.
SCALE: 1/4" = 10 FT.



CALVING BARN
ROBERT WEIZ, HURDSFIELD, N.D.
SCALE: 1/8" = 10 FT.

| CATTLE HANDLING/CALVING BARN'S | | | |
|--|------------------------------|-------------------------------|--|
| 5 SYSTEMS W/ CHUTES | SCALE 1/8" = 10' | DRAWN BY R. Cassatt | |
| PREPARED BY ROBERT WEIZ, HURDSFIELD, N.D. | | APPROVED BY N.D. 724-1-1A | |
| DATE Dec. '74 | APPROVED BY N.D. 724-1-1A | DRAWING NUMBER SHT. 2 of 2 | |