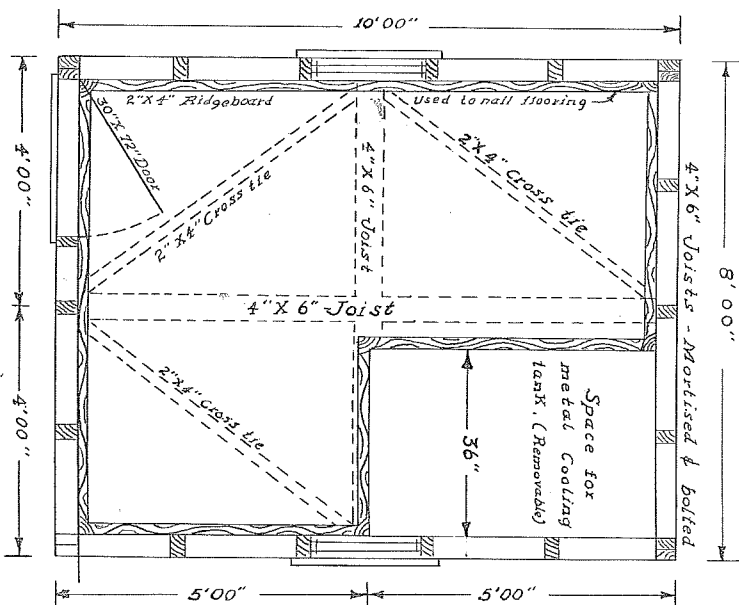
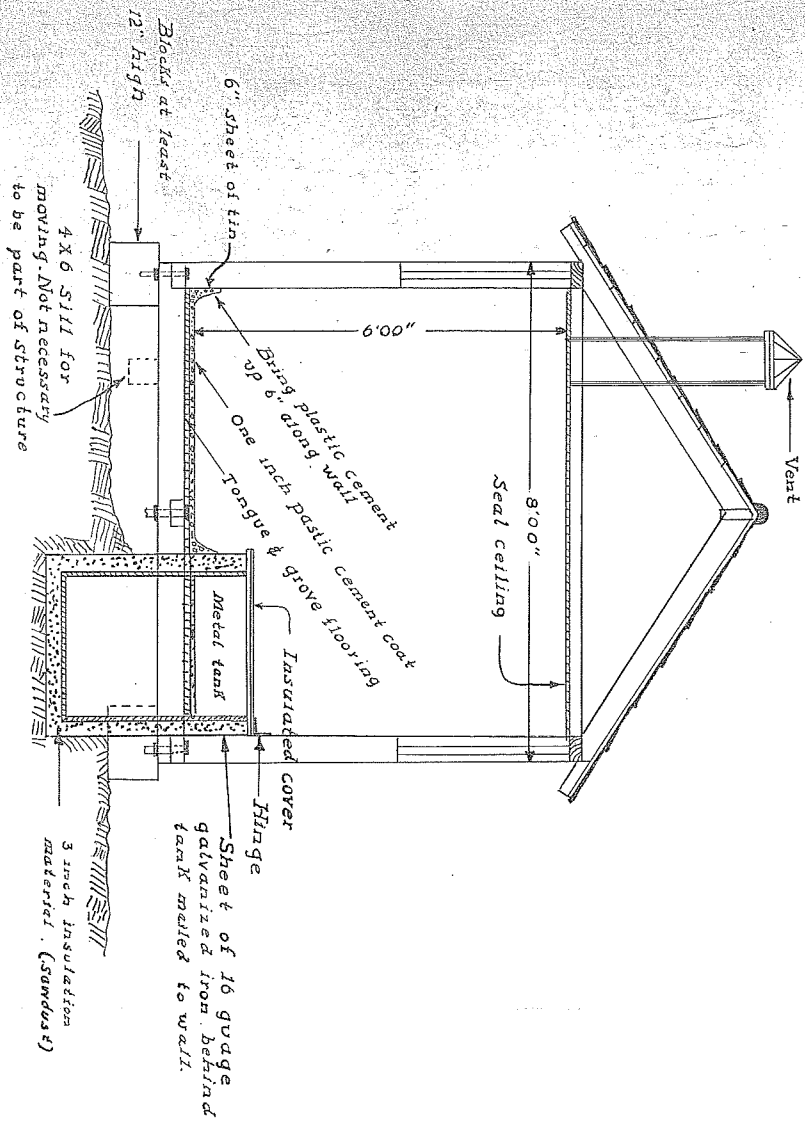


# PORTABLE MILK HOUSE

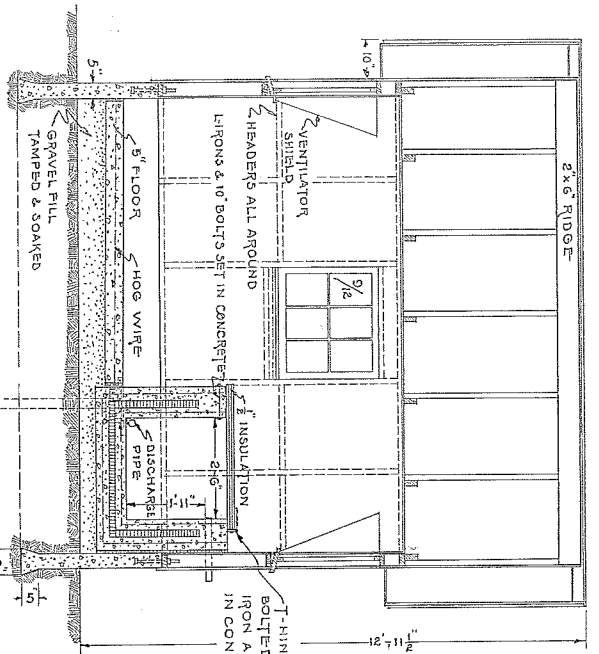


Plan View  
 Scale 1/8" = 1'00"

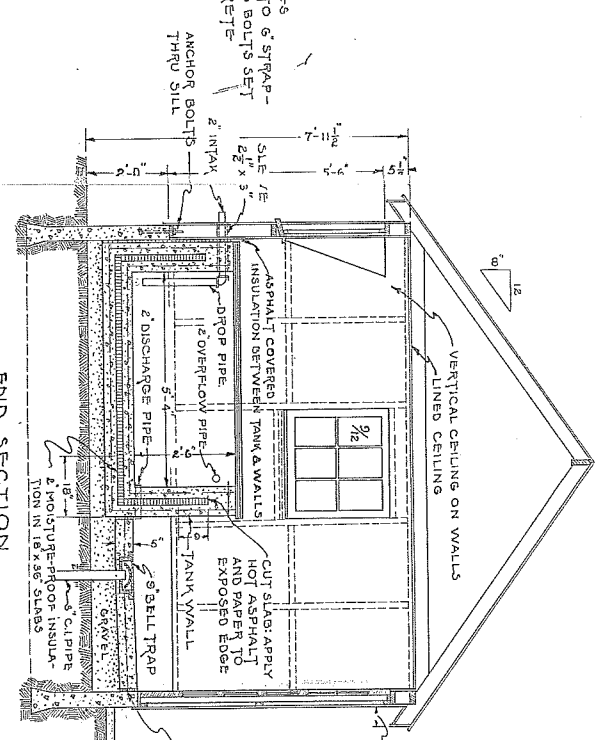
Floor to be made from tongue and groove material. Cover inch coat of plastic cement of durable texture.

2 - 9/12 six light windows placed as shown.

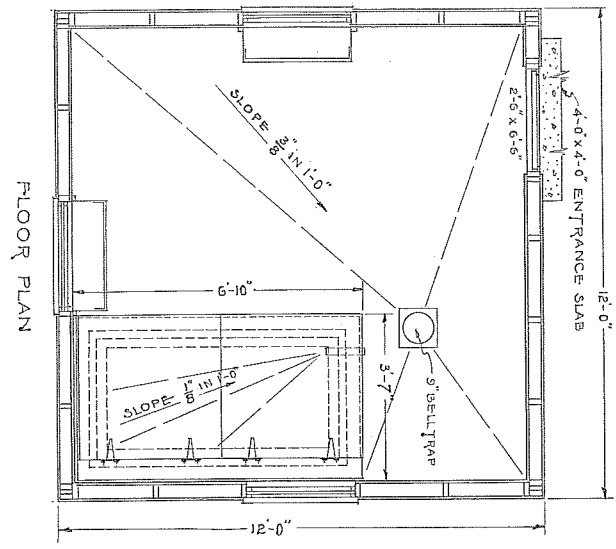
ND752-1-0



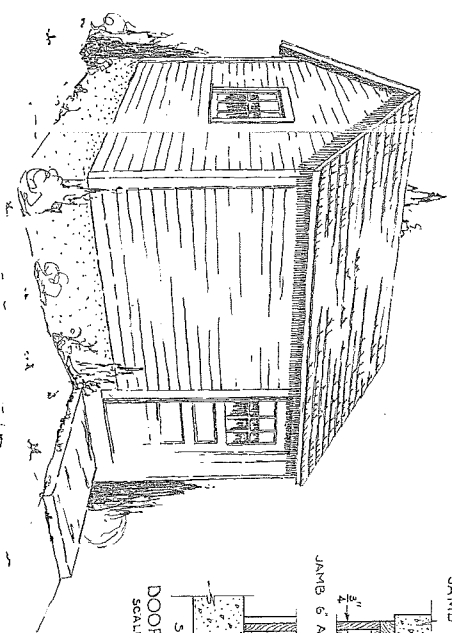
SIDE SECTION



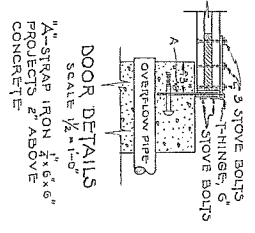
END SECTION



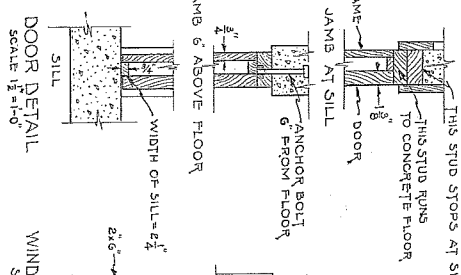
FLOOR PLAN



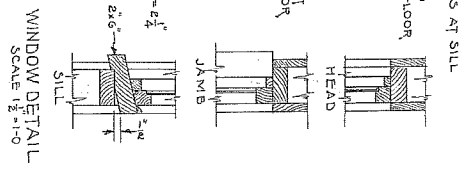
PERSPECTIVE



DOOR DETAILS  
SCALE 1/2" = 1'-0"



DOOR DETAIL  
SCALE 1/2" = 1'-0"



WINDOW DETAIL  
SCALE 1/2" = 1'-0"

COOPERATIVE EXTENSION WORK IN  
AGRICULTURE AND HOME ECONOMICS  
STATE OF NORTH DAKOTA  
NORTH DAKOTA AGRICULTURAL COLLEGE  
AND  
U. S. DEPT. OF AGRICULTURE COOPERATING  
EXT. AGRIC. ENGINEER--FARGO, N. DAK.  
RESIDING IN COOPERATION WITH  
CITY HEALTH DEPARTMENT FARGO, DAK.  
SANITARY MILK HOUSE  
PLAN NO. ND. 752-1. DN. BY J.S.W. DATE '38