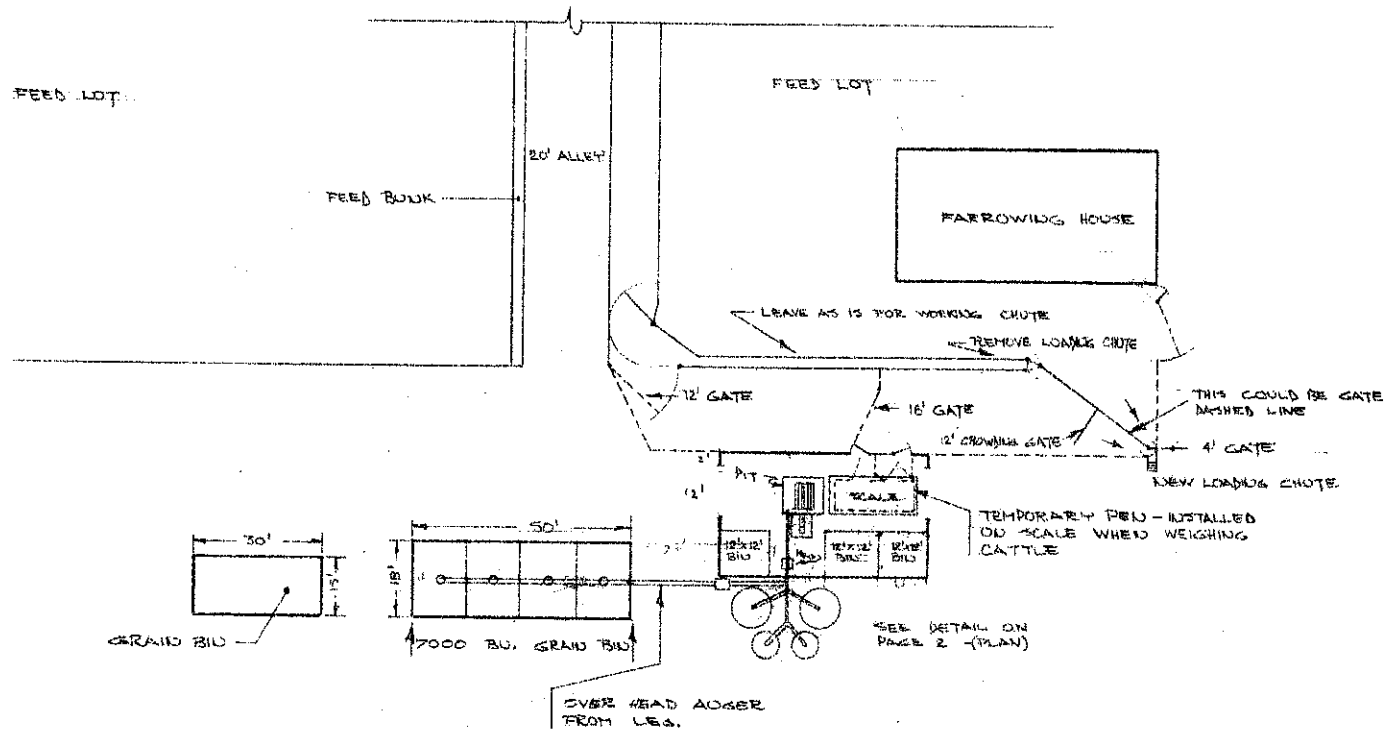


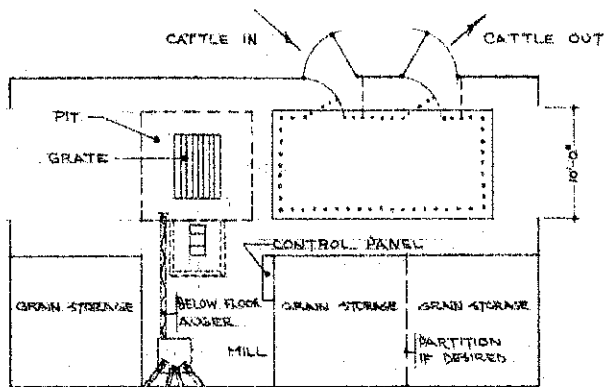
1" = 20'

POLE SHEDS.
SOME WIRE IN THIS AREA



NOTES
SEE BEEF EQUIPMENT PLANS
BOOK FOR FEEDS, GATES AND
WORKING CHUTE CONSTRUCTION

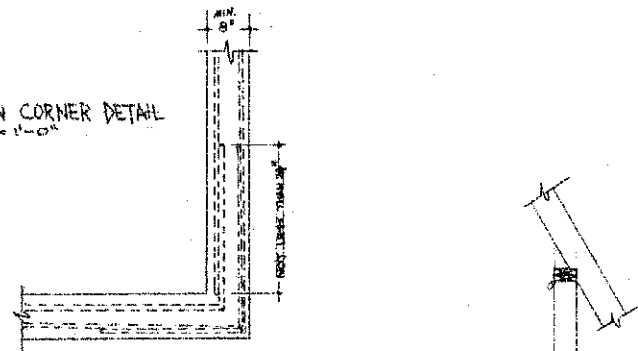
FEED HANDLING & SCALE LAYOUT			
PRE. FOR PAUL FEDDER - PAGE, U. DAK.	SCALE	DRAWN BY WHE	
PRE. BY N.D. S.U.	DIRECTION SERVICE - AGR. EDGR. DEPT		DATE
APRIL, 1967	N.D. TSB-1-7	1 of 2	



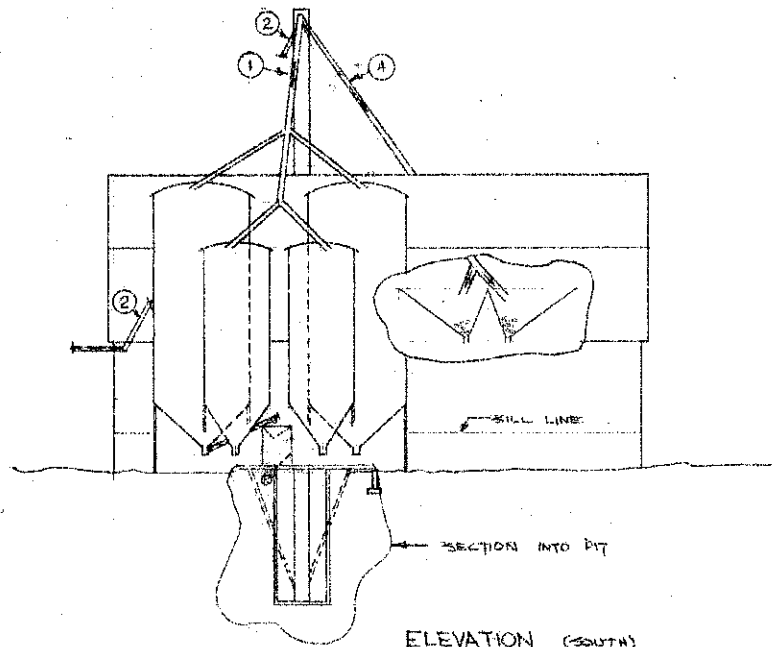
PLAN
SCALE: 1/8" = 1'-0"

NOTE:
HOPPER BOTTOM BINS.
POSITION METAL BINS.
TO USE 12" ALUGER FOR
7" DIAMETER BINS
AND 16" ALUGER FOR
6" DIAMETER BINS
THESE ARE THE RETURNS

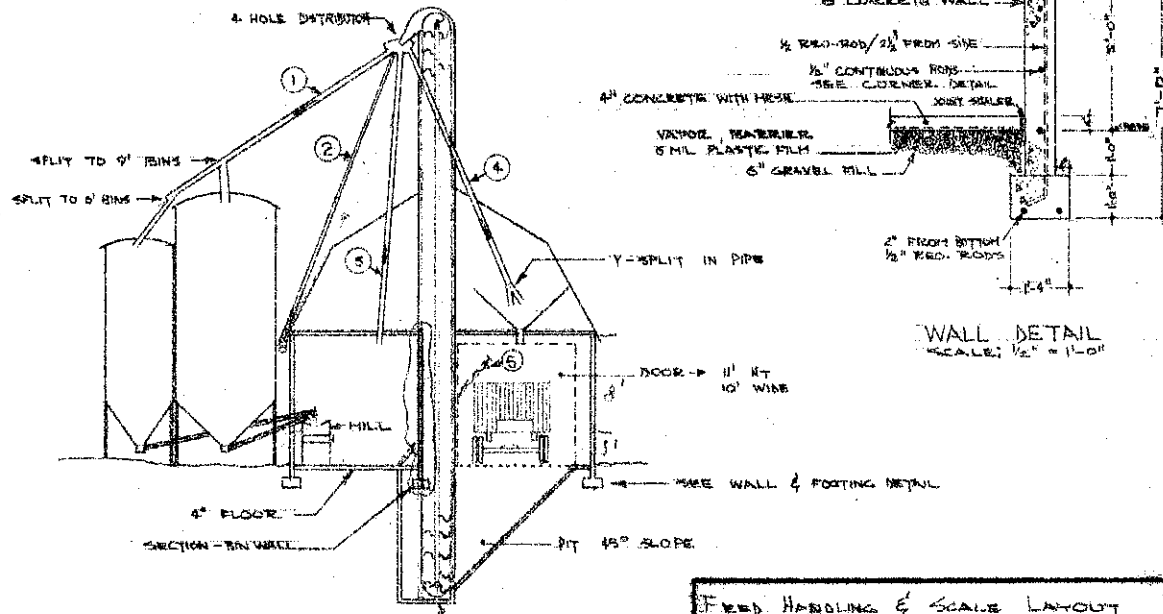
FOUNDATION CORNER DETAIL
SCALE: 1/2" = 1'-0"



- ① TO METAL BINS
- ② TO OUTSIDE WOOD BINS
- ③ TO INSIDE BINS
- ④ TO TRUCK LOADING - OVER PIT
- ⑤ OPTIONAL: FOR EMPTYING BINS. USE BIN FOR GROUND FEED



ELEVATION (SOUTH)
SCALE: 1/8" = 1'-0"

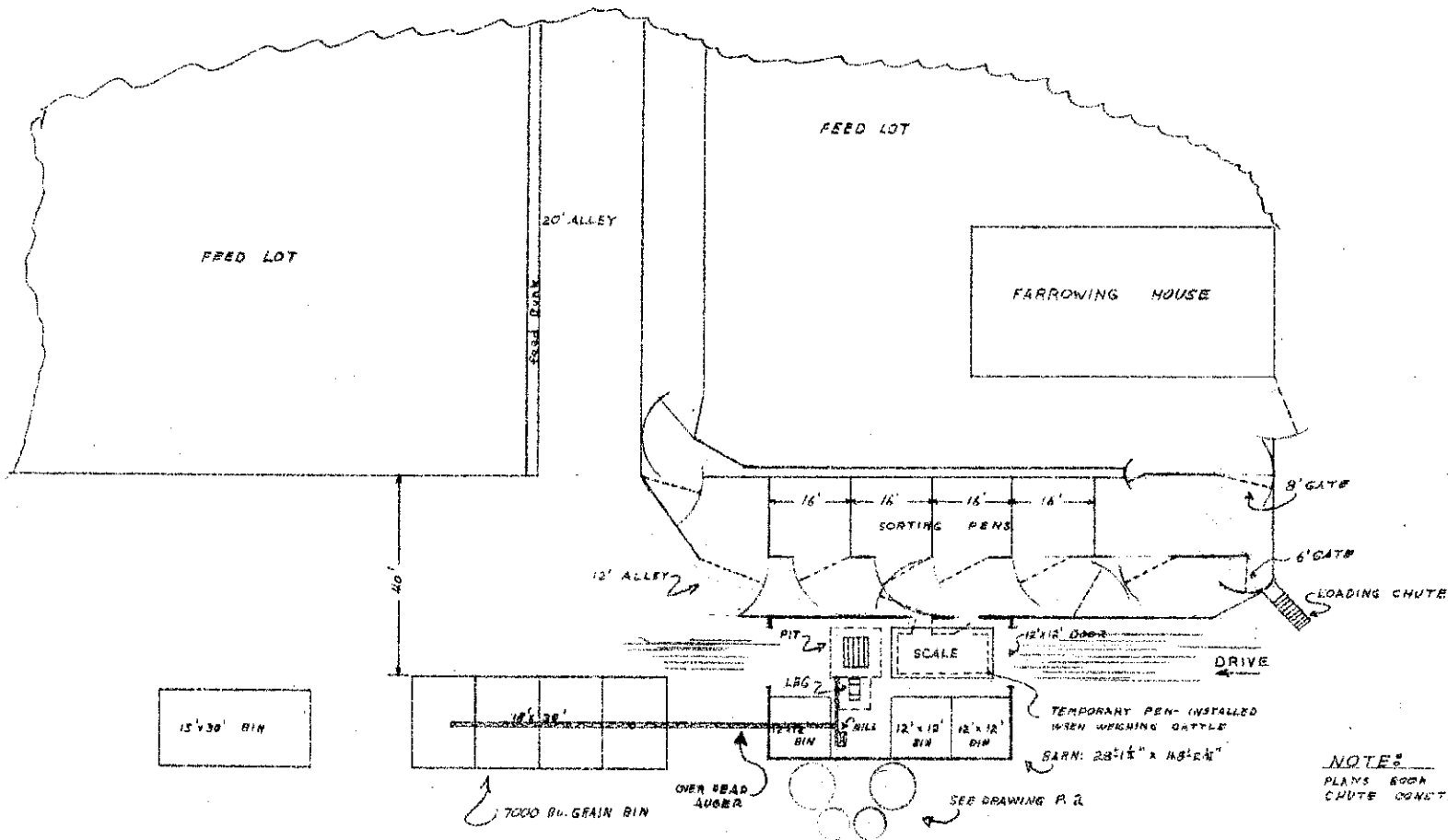


WALL DETAIL
SCALE: 1/2" = 1'-0"

SECTION
SCALE: 1/8" = 1'-0"

LEGS: FOLLOW MFGS.
INSTRUCTIONS FOR
PIT AND LEG

FEED HANDLING & SCALE LAYOUT			
DATE: FOR	PROJECT	SHEET NO.	TOTAL SHEETS
DATE: BY			
N. H. S. U. EXTENSION SERVICE - AGR. ENGR. DEPT.			
DATE: 1/25/65	APPROVED: ND. 75B-1-7	2 OF 3	



NOTES: SEE BEEF EQUIPMENT PLAYS BOOK FOR PENS, GATES, AND CHUTE CONSTRUCTION.....

SCALE: 1/16" = 1'

FEED HANDLING & CORRAL LAYOUT (REVISED)			
PRE. FOR Paul Eaddy	SCALE	DRAWN BY C.A.P.	
PRE. BY N.D.S.U. Ext. Serv. A.E. Dept	APPROVED BY		DRAWING NUMBER
DATE June '65	N.D. 75B-1-7		3 of 3