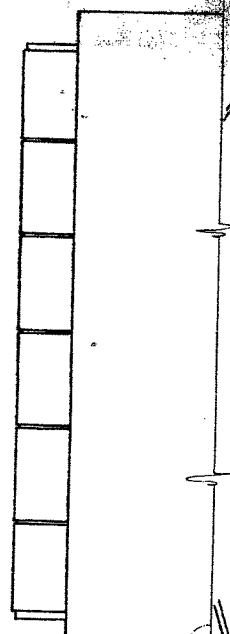
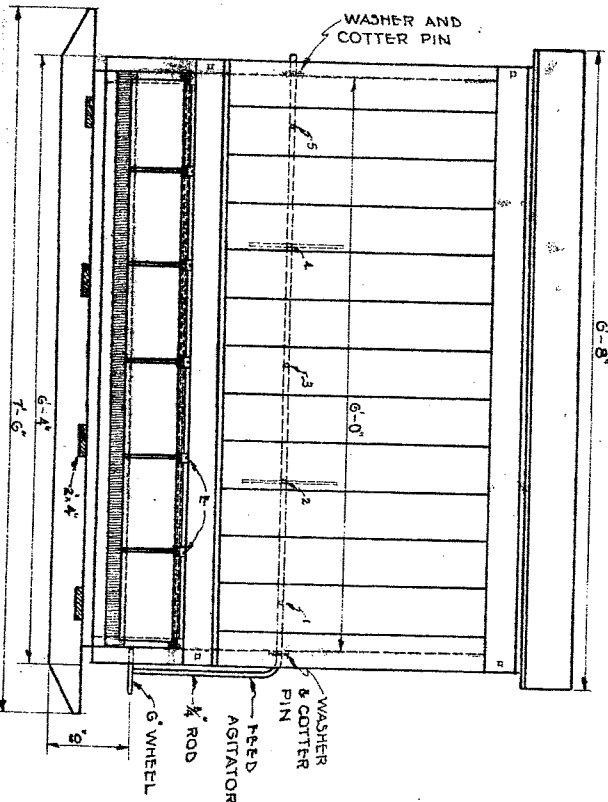


- BILL OF MATERIALS**
- 2-1/2"x10"x4'-7"
 - 2-2"x4"x6'-0"
 - 4-2"x4"x6'-0"
 - 4-2"x4"x4'-6"
 - 2-1/2"x4"x3'-0"
 - 15-1/2"x1/2"x3'-0"
 - 80-1/2"x1/2"x4'-0"
 - 6-1/2"x6'-0"
 - 4-1/2"x4'-0"
 - 2-1/2"x6'-0"
 - 4-1/2"x6'-0"
 - 15-1/2"x1/2"x3'-0"
 - 2-1/2"x4"x3'-0"
 - 1-1/2"x3'-0"
 - 1-2"x4"x6'-0"
 - 5-4" STRAP HINGES
 - 2 DOOR ASSEMBLIES
 - 2-1/2"x1/2"x3'-0" STRAP IRON
 - 8-3/4"x5/8" BOLTS
 - 2-1/2"x2"
 - 1/2"x2"
 - 4-3/4"x1/2"
 - 4-3/4"x1/2"
 - 6-1/2"x1/2" SCREWS



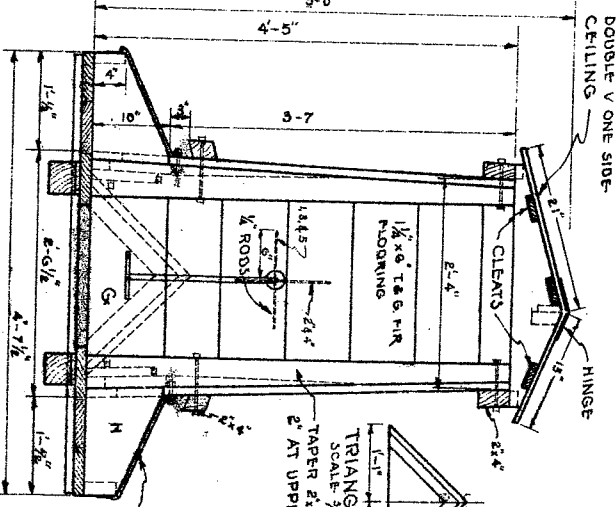
HALF PLAN

CONCRETE OR PORTABLE PLANK FEEDING PLATFORM VERY DESIRABLE



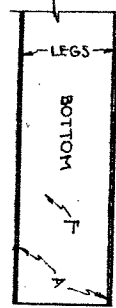
SIDE VIEW

SCALE 1/4"=1'-0"



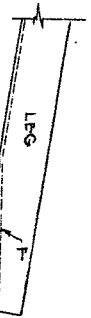
END VIEW

DETAIL OF CHANNEL AT "B"

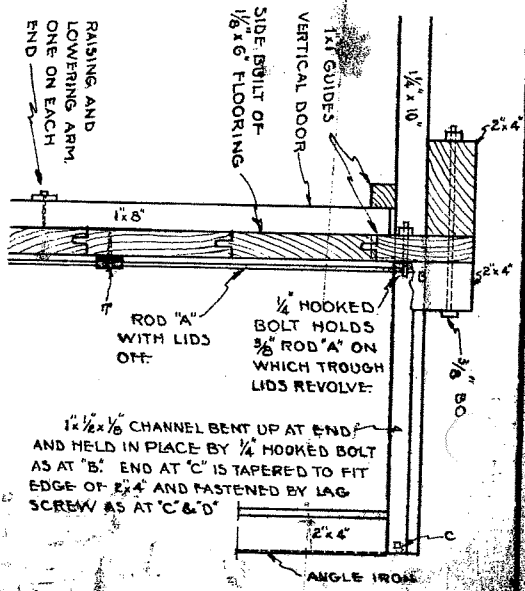


CUT OFF DOTTED PART OF LEGS "A" AND BEND UP TO POSITION AS SHOWN.

DETAIL OF CHANNEL AT "C" & "D"



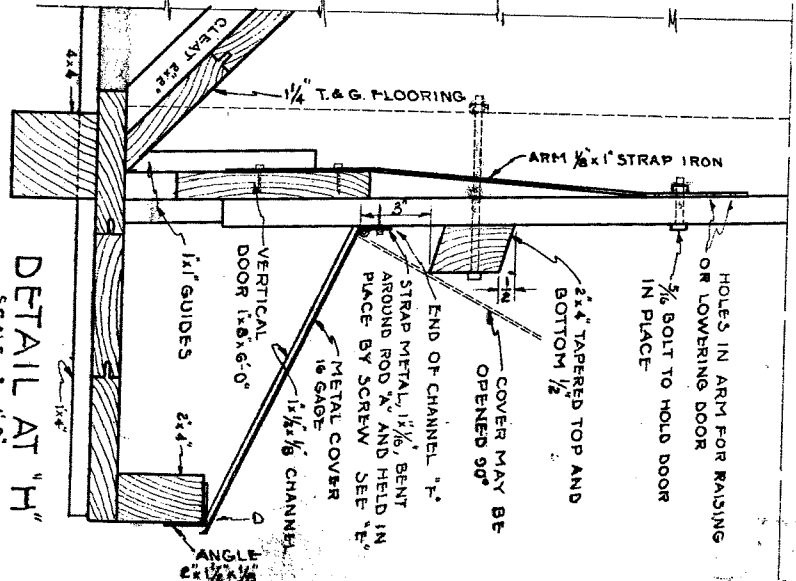
CUT OFF DOTTED PART OF LEG "A" AND BEND UP TO POSITION AS SHOWN



RAISING AND LOWERING ARM ONE ON EACH END

SIDE BUILT OF 1/2"x6" FLOORING

1-1/2"x3/8" CHANNEL BENT UP AT END AND HELD IN PLACE BY 1/4" HOOKED BOLT AS AT "B". END AT "C" IS TAPERED TO FIT EDGE OF 2"x4" AND FASTENED BY LAG SCREW AS AT "C" & "D".



DETAIL AT "H" SCALE 3/4"=1'-0"

METAL COVERS, DIVIDERS AND FRAME HOMEMADE OR CAN BE PURCHASED FROM COMMERCIAL SOURCES

COOPERATIVE EXTENSION WORK IN AGRICULTURE AND HOME ECONOMICS STATE OF NORTH DAKOTA NORTH DAKOTA AGRICULTURAL COLLEGE AND U. S. DEPT. OF AGRICULTURE COOPERATING EXT. AGR. ENGINEER FARGO, N. DAK. PORTABLE HOG SLAT FEEDER PLAN NO. ND 2753 (REV. 11-11-46)