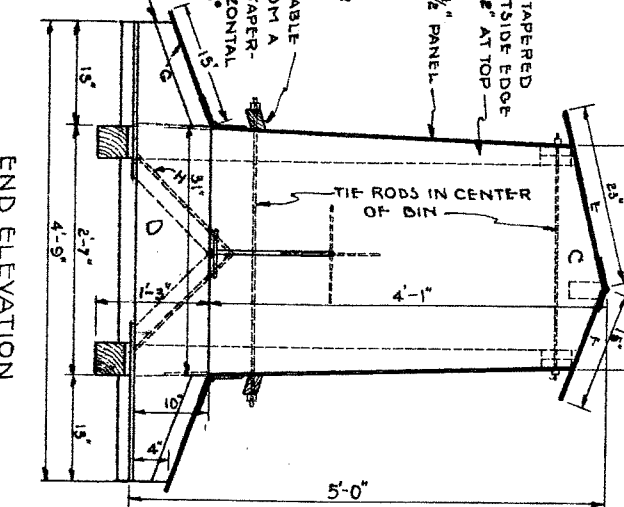
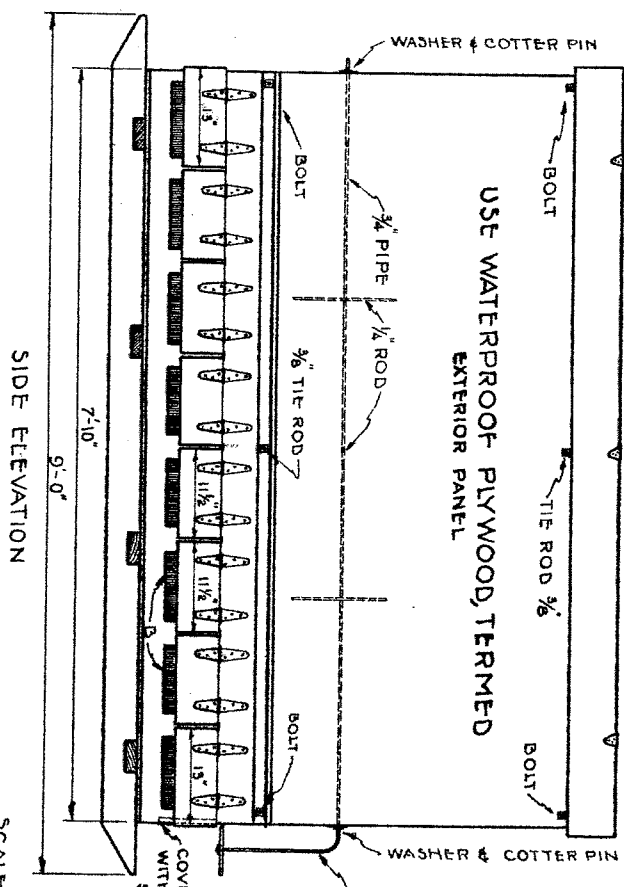


BILL OF MATERIALS

- COVER 1 1/2" x 15'-0"
- 1-1/2" x 6'-0"
- 1-1/2" x 7'-9"
- 3-5/8" STRAP HINGES
- A 1-1/2" x 17 1/2" x 7'-9"
- 1-1/2" x 17 1/2" x 7'-9"
- 6-8 x 2 1/2" x 1 1/2"
- SKIDS 2-1/2" x 4 1/2" x 9'-0"
- SIDES 2-1/2" x 4 1/2" x 7'-10"
- ENDS 2-1/2" x 4 1/2" x 4'-0"
- TROUGHS 2-1/2" x 10 1/2" x 9'-0"
- 2-1/2" x 7'-8"
- 2-1/2" x 11'-5 1/2" x 10"
- 16-1/2" x 1 1/2" x 15"
- STRAP HINGES 16 PAIR 4"
- ANGLE IRONS 16-9 1/2" LONG
- PARTITIONS 14-18" LONG
- SCREWS # DOZ. NO. 2, 1" F. H. B.
- BOLTS, MACHINE 4-3/8" x 6"
- " TIE 1-3/8" x 2-1/2" x 8"
- " TIE 1-3/8" x 1-1/2" x 10"
- HASH RINGE 1-1/2" x 11'-0"
- WASHERS #1 DOZ. 3/8"
- STOVE DOOR 1/2 DOZ. 1/2" x 1 1/2"
- WASHERS 4-3/8"
- PIPE 10'-0"
- RODS 5-1/2" x 1'-0"
- WASHERS 3-1/2"
- COTTER PIN 5/16"
- HAND WHEEL 1-10"
- DOOR 1-10" x 7'-9"
- STRAP IRON 4-3/8" x 1"
- BOLTS 4-3/8" x 1"
- WASHERS 4-3/8"
- WATERPROOF GLUE
- 1 QT
- NAILS 1" x 1 1/2" BOX
- 1" x 1 1/2" x 1 1/2" BOX
- SCREW BOLTS 18 DOZ. 3/8"



COOPERATIVE EXTENSION WORK IN AGRICULTURE AND HOME ECONOMICS STATE OF NORTH DAKOTA NORTH DAKOTA AGRICULTURAL COLLEGE AND U.S. DEPT. OF AGRICULTURE COOPERATING EXT. AGRIC. ENGINEER VANCE H. DAK. PLYWOOD CONSTRUCTION

PLAN NO. N.D. 176-4-1 (REVISED BY) DATE 10/24/45