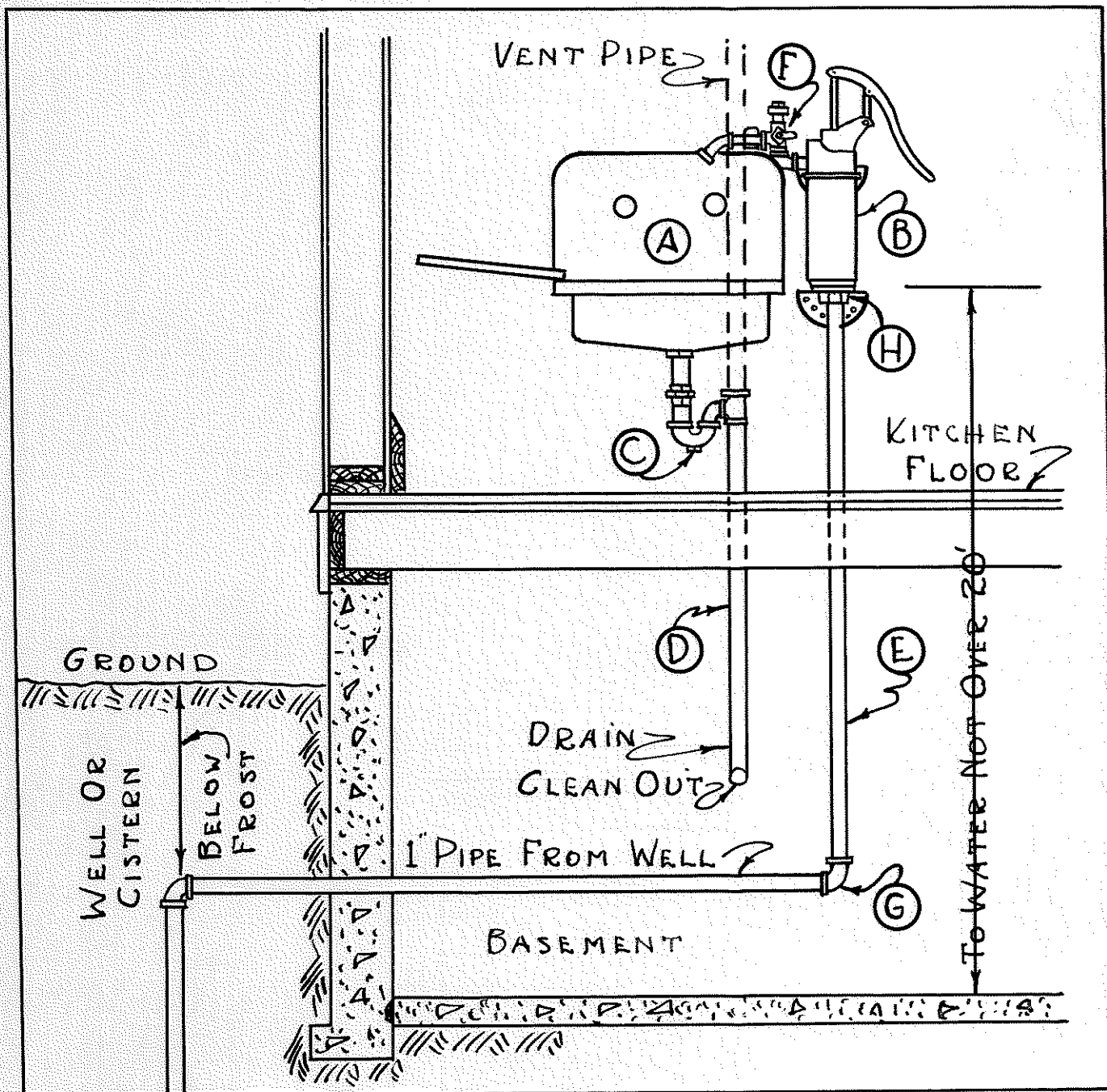


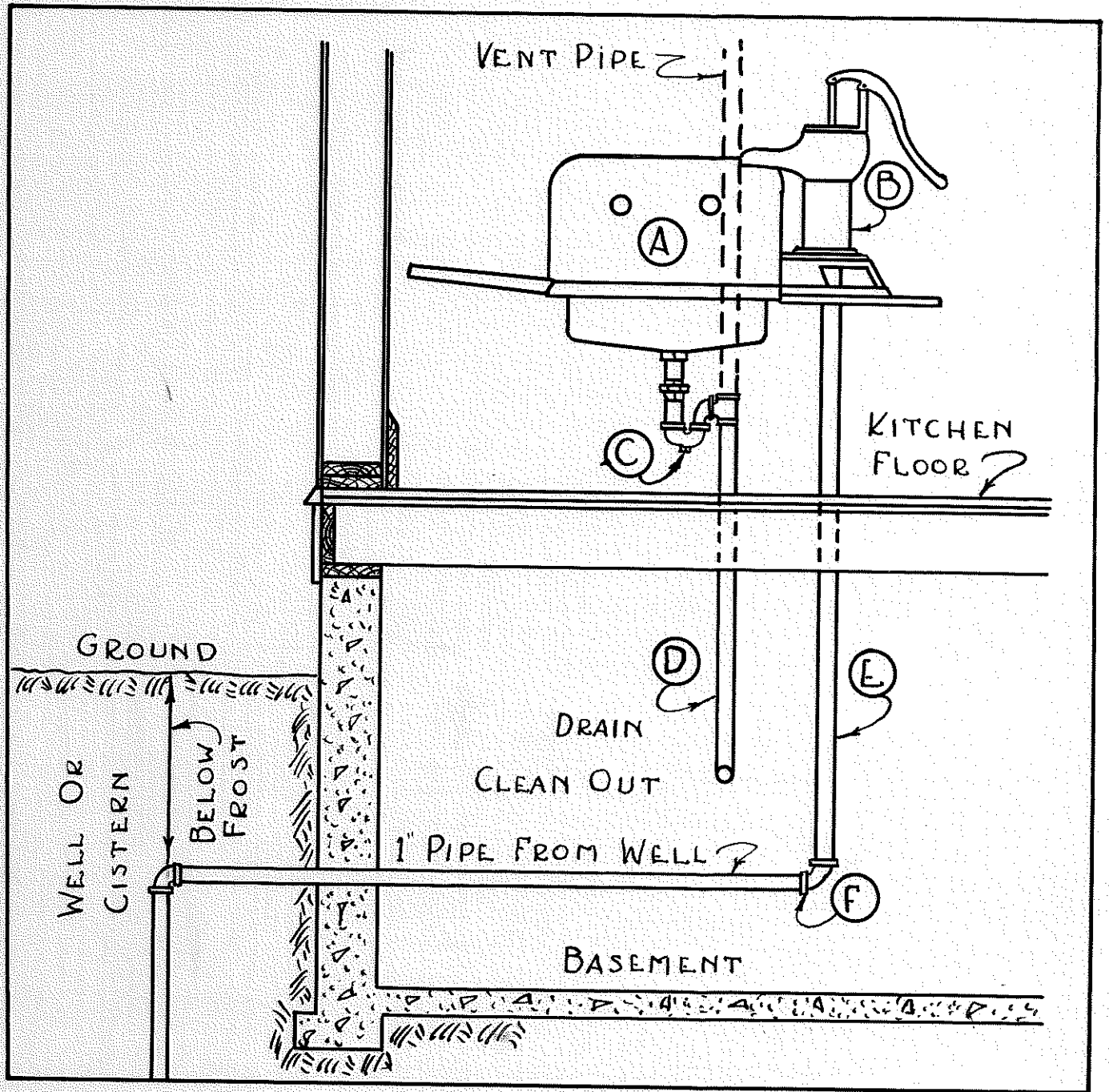
**NORTH DAKOTA AGRICULTURAL COLLEGE**  
 DIVISION OF AGRICULTURAL EXTENSION  
 STATE COLLEGE STATION, FARGO, NORTH DAKOTA  
 H. L. WALSTER - DIRECTOR  
 U.S. DEPARTMENT OF AGRICULTURE COOPERATING  
 ACTS OF CONGRESS MAY 8, JUNE 26, 1916

**KITCHEN SINK INSTALLATION**  
 SCALE: PLAN NO. N.D. 8511-4-N DATE March 1931  
 DEPARTMENT OF AGRICULTURAL ENGINEERING  
 DESIGNED BY AGRAL EXPERIMENT STATION  
 APPROVED BY  
 DRAWN BY C. L. H.  
 TRACED BY R. W. C.



## THE KITCHEN FORCE PUMP

- (A) SINK AND DRAIN BOARD
- (B) BRACKET FORCE PUMP
- (C) TRAP FOR SINK
- (D) DRAIN FROM SINK
- (E) 1" GALVANIZED PIPE
- (F)  $\frac{3}{4}$ " THREE WAY COCK
- (G) 1" ELBOW
- (H)  $\frac{1}{2}$ " BUSHING



### THE KITCHEN PITCHER PUMP

- (A) SINK AND DRAIN BOARD
- (B) PITCHER PUMP
- (C) TRAP AND CLEAN OUT PLUG FOR SINK
- (D) DRAIN FROM SINK
- (E) GALVANIZED 1" PIPE
- (F) 1" ELBOW