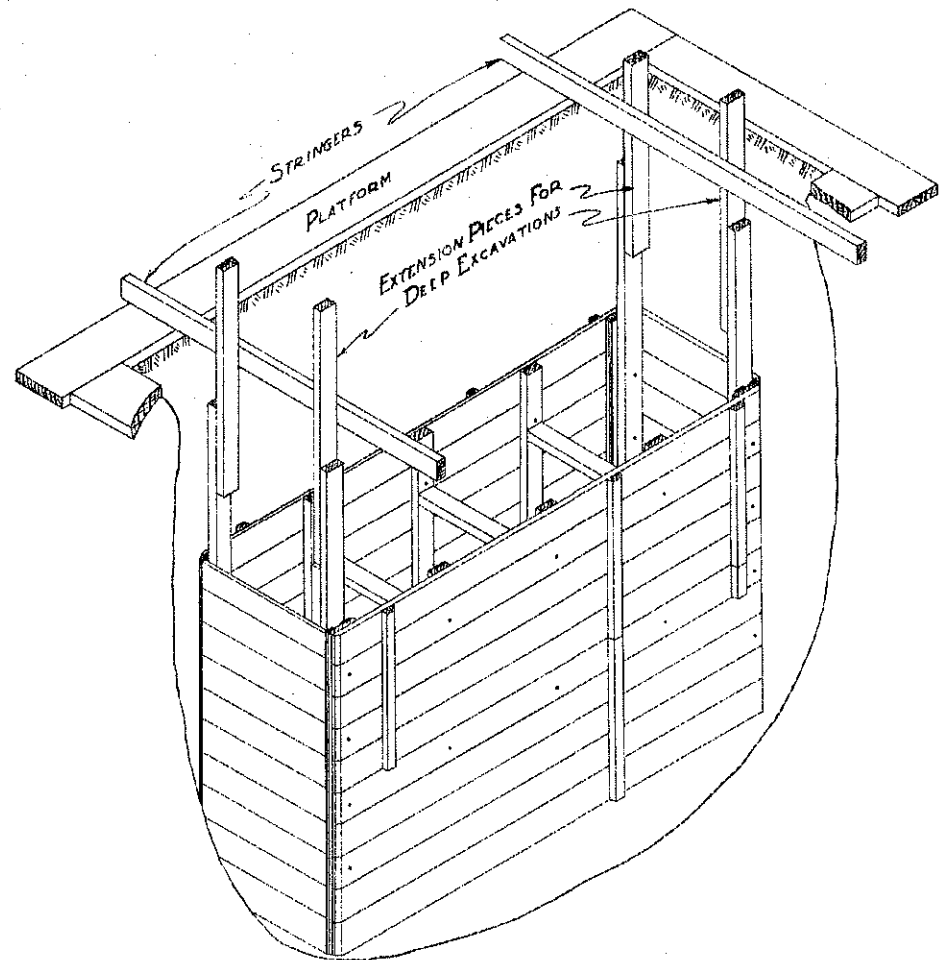
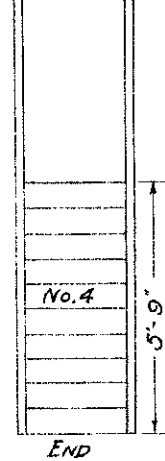
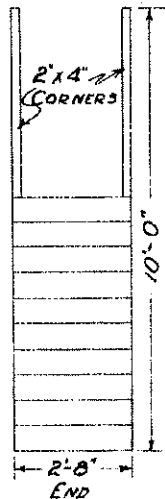
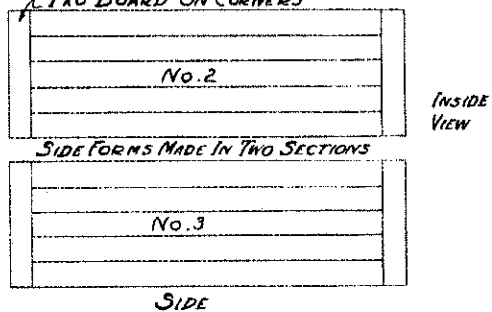
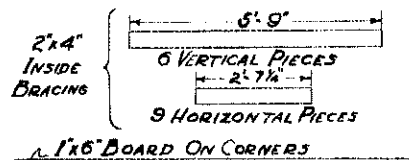
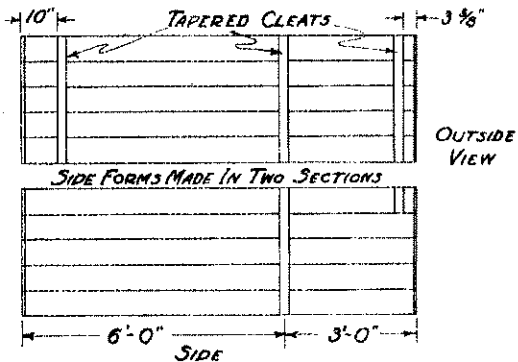
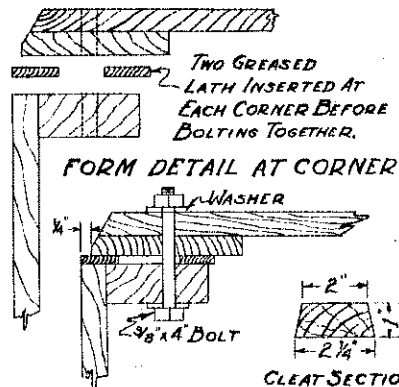


THE SIDES AND ENDS OF THE FORMS ARE MADE FROM 1"x8" SHIPLAP 10 BOARDS HIGH, WITH LAP REMOVED FROM TOP AND BOTTOM BOARDS.

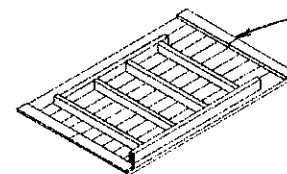


PERSPECTIVE VIEW OF FORMS IN PLACE



BILL OF MATERIAL FOR FORMS

- 20 - 1"x8" x 12'-0" SHIPLAP
- 3 - 2'x4" x 12'-0" BRACING
- 4 - 2'x4" x 10'-0" CORNERS
- 3 - 2'x4" x 8'-0" BRACING
- 2 - 1'x3" x 12'-0" CLEATS
- 2 - 1'x6" x 12'-0" CORNERS
- 16 - 3/8" x 4" MACHINE BOLTS
- 12 - 3/8" x 3" MACHINE BOLTS
- 56 - 3/8" WASHERS
- 12 - LATH
- 2 Lbs. BR. NAILS



SUGGESTED FORM ARRANGMENT FOR POURING COVER SLABS ON ONE SIDE OF SEPTIC TANK FORM

NORTH DAKOTA AGRICULTURAL COLLEGE  
DIVISION OF AGRICULTURAL EXTENSION  
STATE COLLEGE STATION, FARGO, NORTH DAKOTA  
H. L. WALSTER - DIRECTOR  
U. S. DEPARTMENT OF AGRICULTURE COOPERATING

COLLAPSIBLE SEPTIC TANK FORMS  
SCALE: VARIOUS PLAN NO. NDB513-1-1-1 APRIL '31  
DEPARTMENT OF AGRICULTURAL EXTENSION  
DESIGNED BY C. L. Hamilton  
APPROVED BY  
DRAWN BY C. L. Hamilton TRACED BY C. E. Kelly