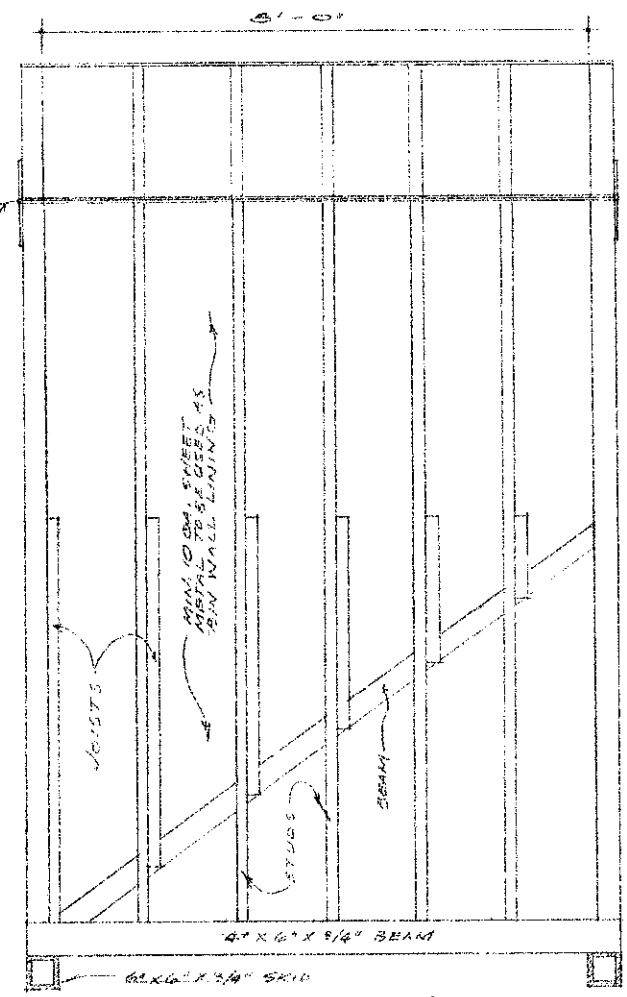
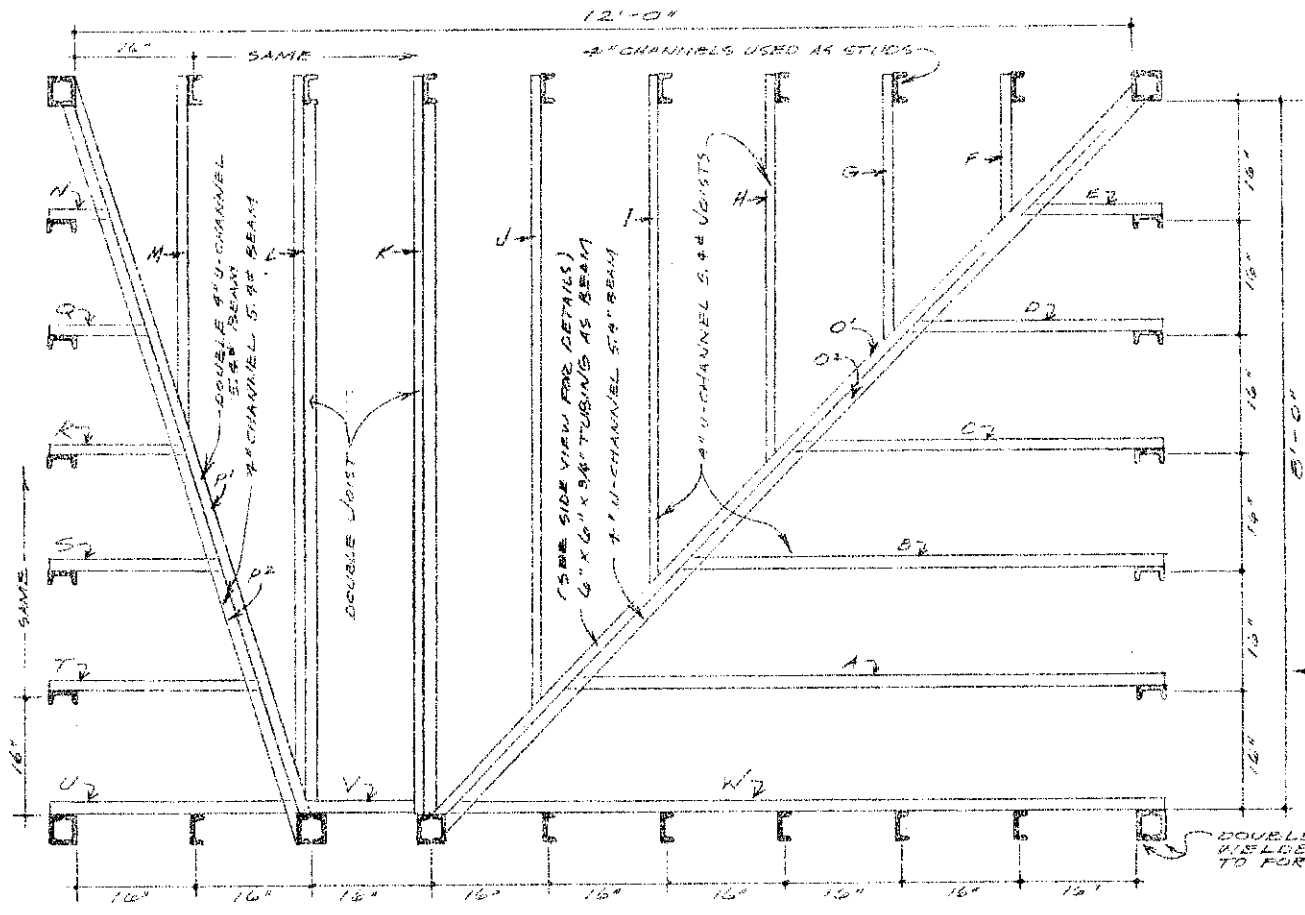


LIST OF JOIST AND BEAM MEMBERS			APPROX.
MEMBER	SIZE & WEIGHT	NO. NEEDED	LENGTH
A	4" CHANNEL 5.9#	1	21'-0"
B	SAME	1	7'-0"
C	SAME	1	5'-4"
D	SAME	1	3'-0"
E	SAME	1	2'-0"
F	SAME	1	3'-0"
G	SAME	1	5'-4"
H	SAME	1	7'-0"
I	SAME	1	8'-0"
J	SAME	1	7'-0"
K	SAME	2	10'-4"
L	SAME	2	10'-4"
M	SAME	1	5'-4"
N	SAME	1	1'-0"
O	6" X 6" X 3/4" TUBING	1	15'-0"
P	4" CHANNEL 5.9#	2	15'-0"
Q	4" CHANNEL 5.9#	2	11'-0"
R	SAME	1	11'-0"
S	SAME	1	2'-0"
T	SAME	1	3'-0"
U	SAME	1	4'-0"
V	SAME	1	5'-0"
W	SAME	1	11'-0"

TOTAL AMOUNTS OF STEEL NEEDED.

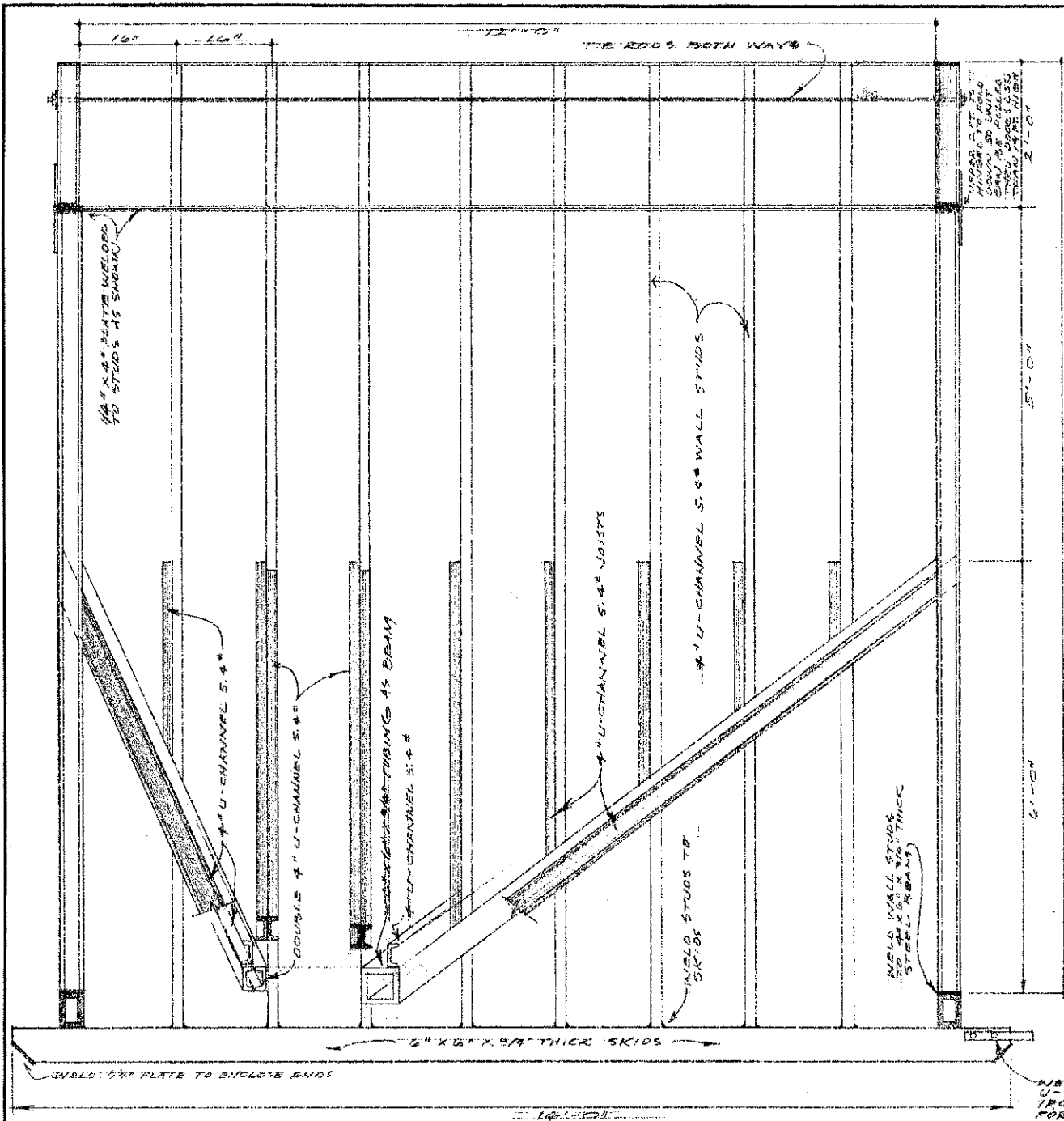
JOISTS AND BEAMS...
 • 4" U-CHANNEL 182'-3"
 • WALL STUDS... 360'-0"
 • 4" U-CHANNEL 109'-0"
 • CORNER POSTS...
 DOUBLE 4" CHANNELS 129'-0"
 • 1/4" X 3" FLAT PLATE 17'-4"
 • 4" X 6" X 3/4" TUBING 55'-0"
 • 6" X 6" X 3/4" TUBING 55'-0"
 • 10 GA. SHEET METAL 344 sq. ft.

NOTE:
 2-7" U-CHANNELS 12.25# OR 6" X 6" X 3/4" THICK STEEL TUBE CAN BE SUBSTITUTED FOR 8" I-BEAM (O)
 5" U-CHANNEL CAN BE SUBSTITUTED FOR #1

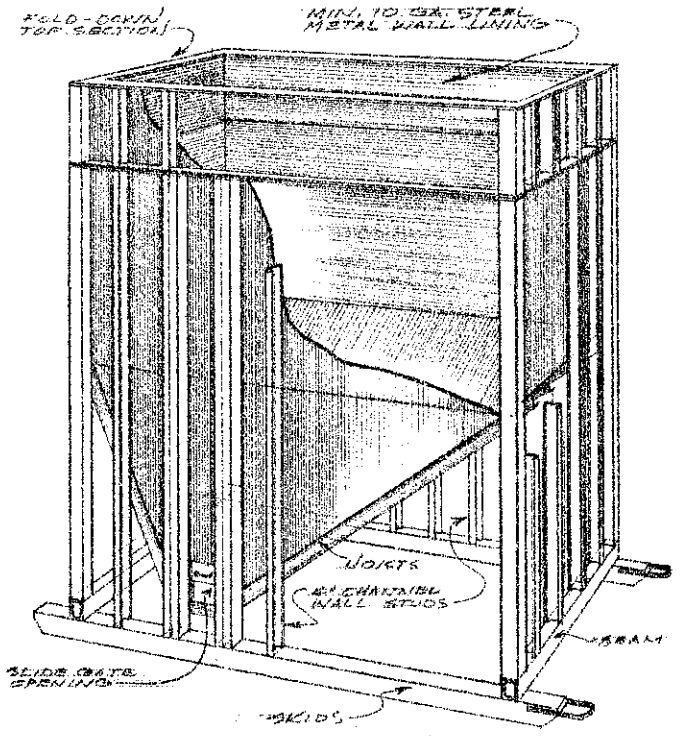


FRONT VIEW
 SEE SIDE VIEW FOR ADDITIONAL DETAILS
 FLOOR PLAN VIEW
 SCALE 1/4" = 1'-0"

PORTABLE DOUBLE-HOPPER STEEL BIN		
PREPARED FOR A. P. B. Burbridge Dean, Dept. of Ag.	SCALE	DRAWN BY E. Cassette
PREPARED BY NDSU Extension Agr. Eng. Dept.	DATE DEC. 1968	APPROVED BY ND. 876-1-1
		DRAWING NUMBER SHEET 1 of 2



SIDE VIEW
SHEET # 11-01



PERSPECTIVE VIEW

WELD OR BOLT U-SHAPED STEEL IRON TO SKID FOR PULLING UNIT

PORTABLE DOUBLE-HOPPER STEEL BIN			
PREPARED FOR ARLON BUNNELL PAK. & ICE MFG. CO.	SCALE	DRAWN BY R. Casette	
PREPARED BY NDSU Extension Agr. Engr. Dept.	DATE	APPROVED BY	DRAWING NUMBER
Dec. 1969	N.D. 876-(-)		SHEET 2 of 2