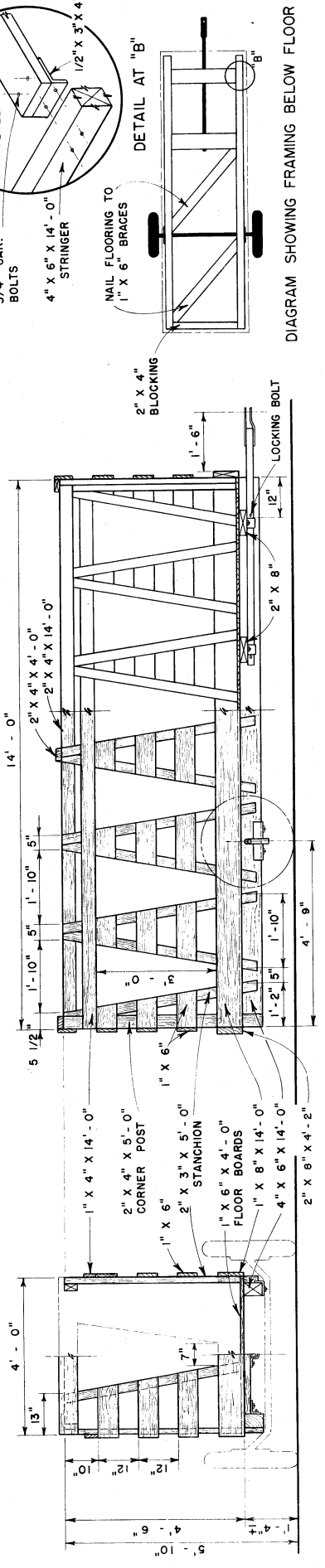


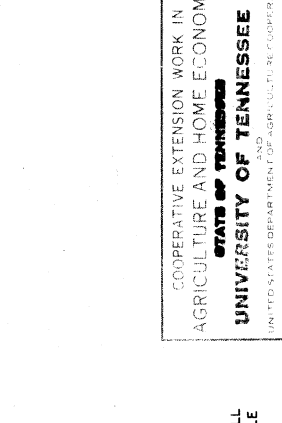
END VIEW
CUT AWAY TO SHOW FRAMING

SIDE VIEW
CUT AWAY TO SHOW FRAMING AND TOW BAR

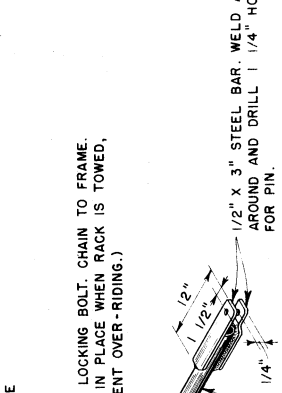


END VIEW
CUT AWAY TO SHOW FRAMING

SIDE VIEW
CUT AWAY TO SHOW FRAMING AND TOW BAR
(THIS RACK IS NOT FOR CATTLE WITH HORNS)



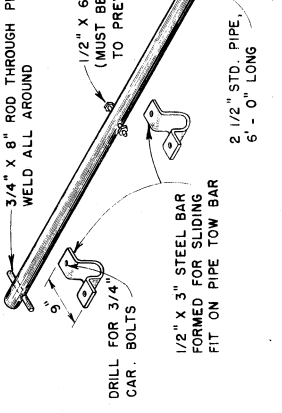
DETAIL AT "A"



DETAIL AT "B"

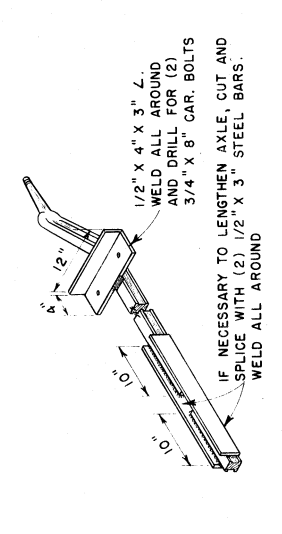
DIAGRAM SHOWING FRAMING BELOW FLOOR

DIAGRAM SHOWING FRAMING BELOW FLOOR



TOW BAR ASSEMBLY

TO SLIDE BACK UNDER FLOOR OF RACK
WHEN NOT IN USE



AXLE ASSEMBLY

ADAPTED FROM AUTOMOBILE FRONT AXLE
AND WHEEL ASSEMBLY OR OTHER DROP AXLE.