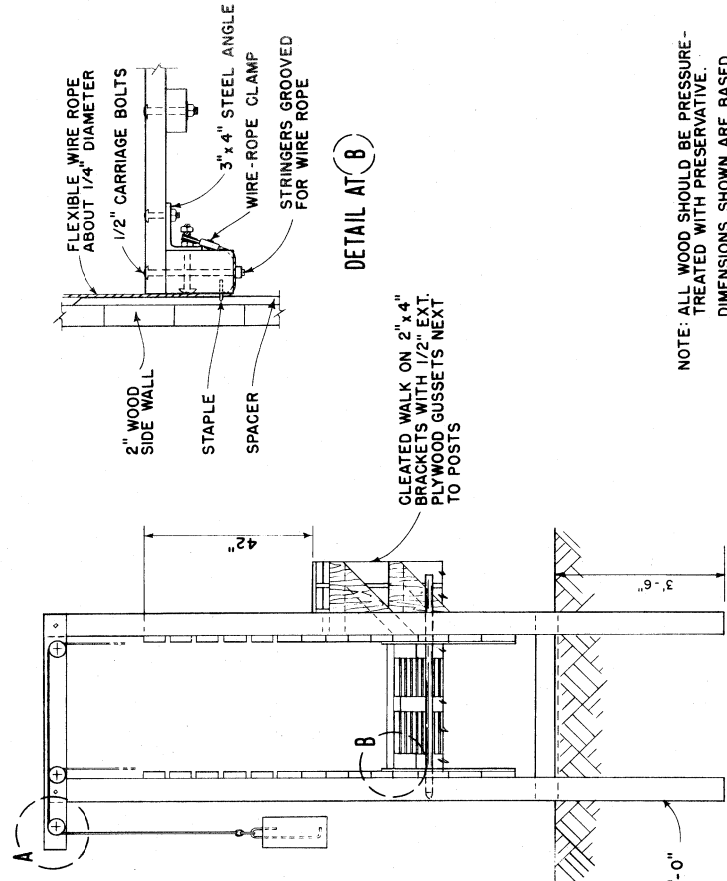


PLAN
(HINGED RAMP NOT SHOWN)

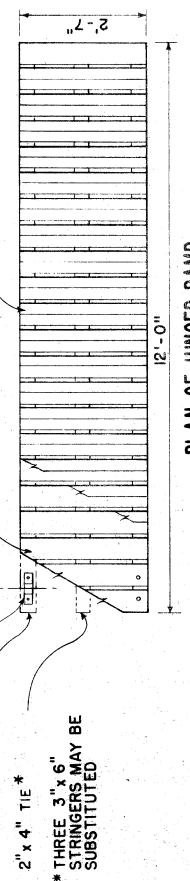


LONGITUDINAL SECTION

DETAIL AT (A)

DETAIL AT (B)

END ELEVATION



PLAN OF HINGED RAMP

NOTE: ALL WOOD SHOULD BE PRESSURE-TREATED WITH PRESERVATIVE. DIMENSIONS SHOWN ARE BASED ON THE USE OF DRESSED LUMBER.

COOPERATIVE EXTENSION WORK IN
AGRICULTURE AND HOME ECONOMICS
STATE OF TENNESSEE
AND
UNIVERSITY OF TENNESSEE
UNITED STATES DEPARTMENT OF AGRICULTURE COOPERATING
VARIABLE-HEIGHT LOADING CHUTE
FOR CATTLE

USDA 57 EX. 5852 SHEET 1 OF 1