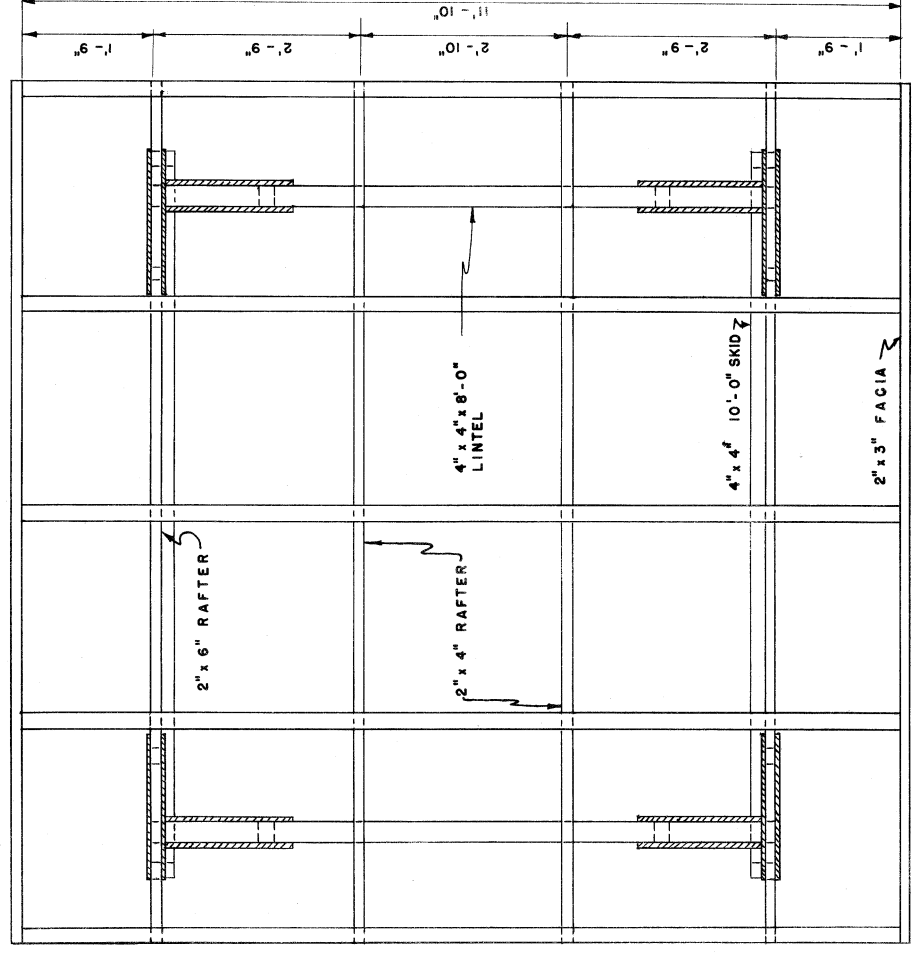
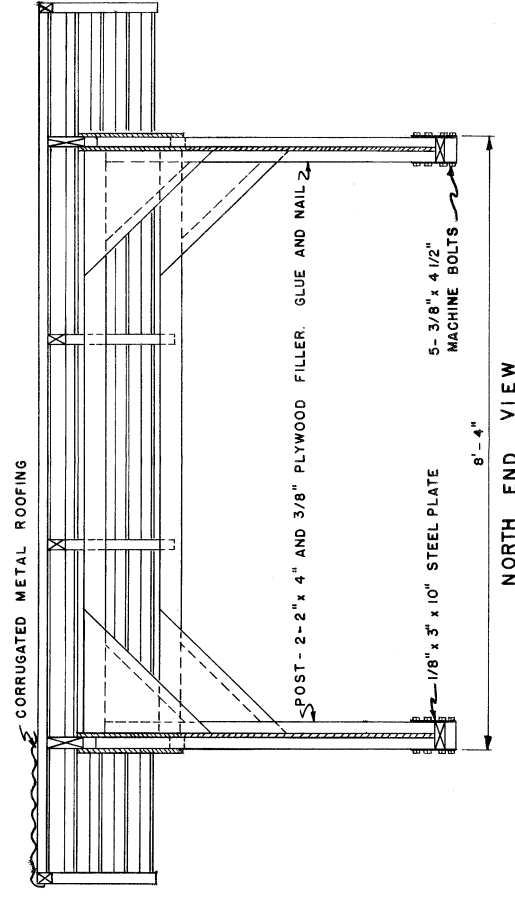
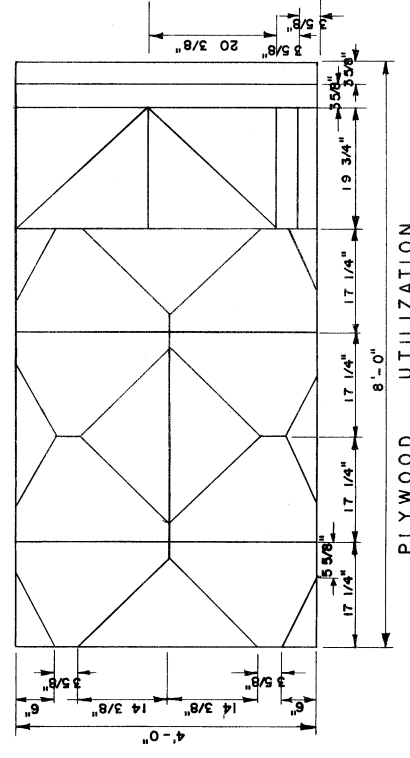


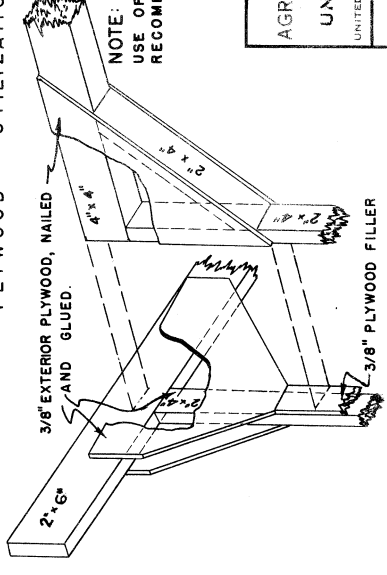
SIDE VIEW



PLAN VIEW OF FRAMING



PLYWOOD UTILIZATION



NOTE:
USE OF WATERPROOF GLUE IS RECOMMENDED.

COOPERATIVE EXTENSION WORK IN
AGRICULTURE AND HOME ECONOMICS
STATE OF TENNESSEE
UNIVERSITY OF TENNESSEE
UNITED STATES DEPARTMENT OF AGRICULTURE COOPERATING

PORTABLE SHADE
FOR HOGS

GAL. '59 EX. 5870 SHEET 1 OF 1

CORNER DETAIL