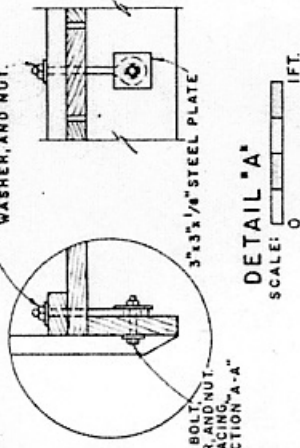
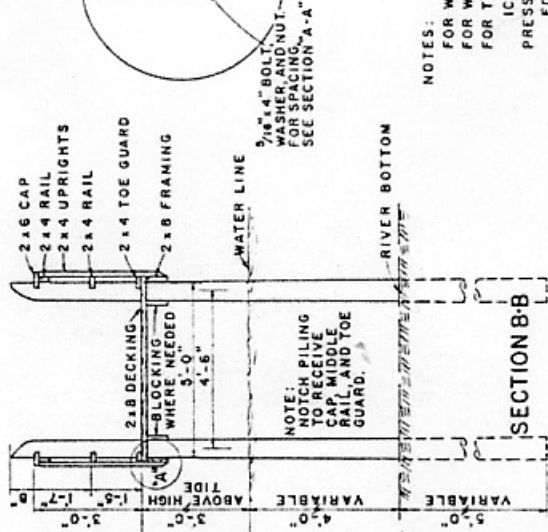
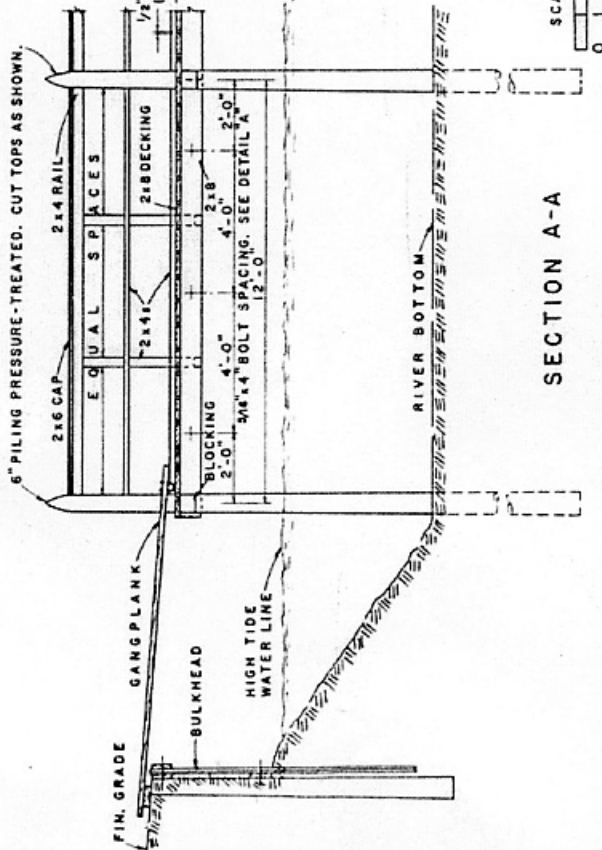


PERSPECTIVE
(BULKHEAD AND GANGPLANK NOT SHOWN)



NOTES:
 FOR WAVES NOT EXCEEDING CRESTS OF 3 FEET.
 FOR WINDS NOT EXCEEDING 110 M.P.H.
 FOR TEMPERATURES THAT PRECLUDES MASSIVE
 ICE FLOES IN THE SPRING.
 PRESSURE TREATED WOOD SHOULD RETAIN THE
 EQUIVALENT OF 8 LBS. OF CREOSOTE PER CU. FT.
 ALL METAL FASTENERS TO BE GALVANIZED.
 DESIGN BENDING FIBER STRESS:
 RAFTERS 1200 LBS. PER SQ. IN.
 MULTIPLE MEMBERS 1400 " " " " " "
 PILING 4500 " " " " " "

