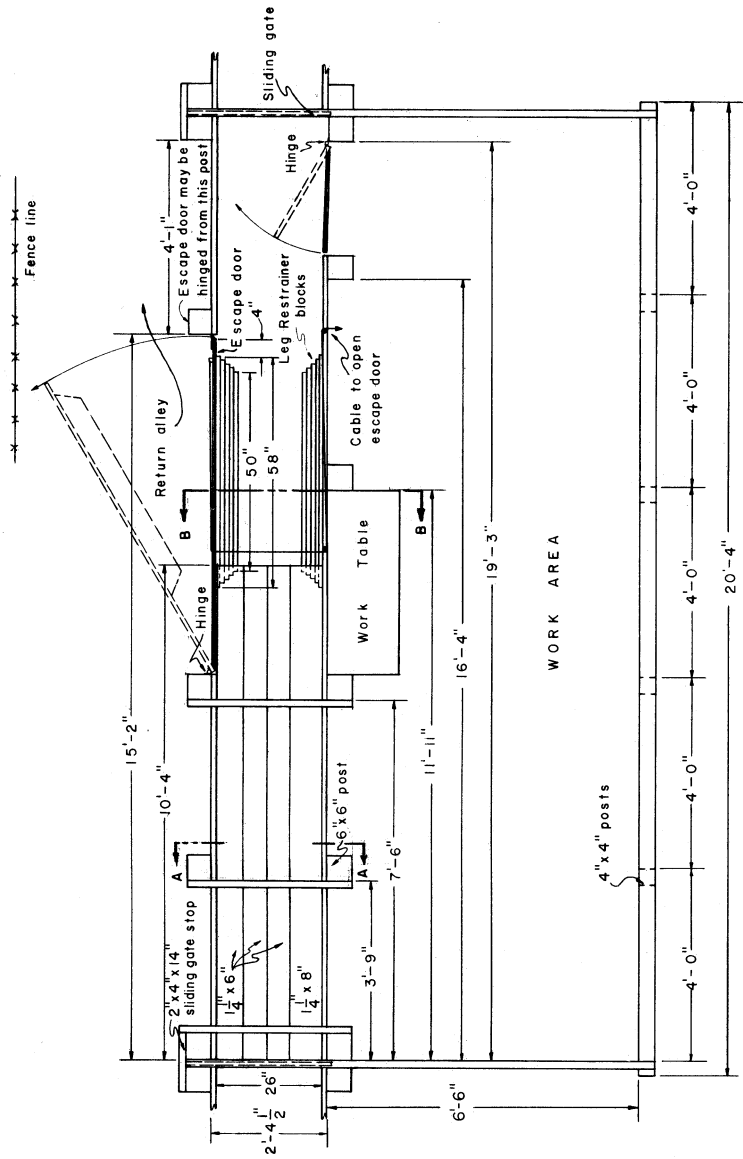


COOPERATIVE EXTENSION WORK IN
 AGRICULTURE AND HOME ECONOMICS
 STATE OF TENNESSEE
 UNIVERSITY OF TENNESSEE
 AND
 UNITED STATES DEPARTMENT OF AGRICULTURE COOPERATING

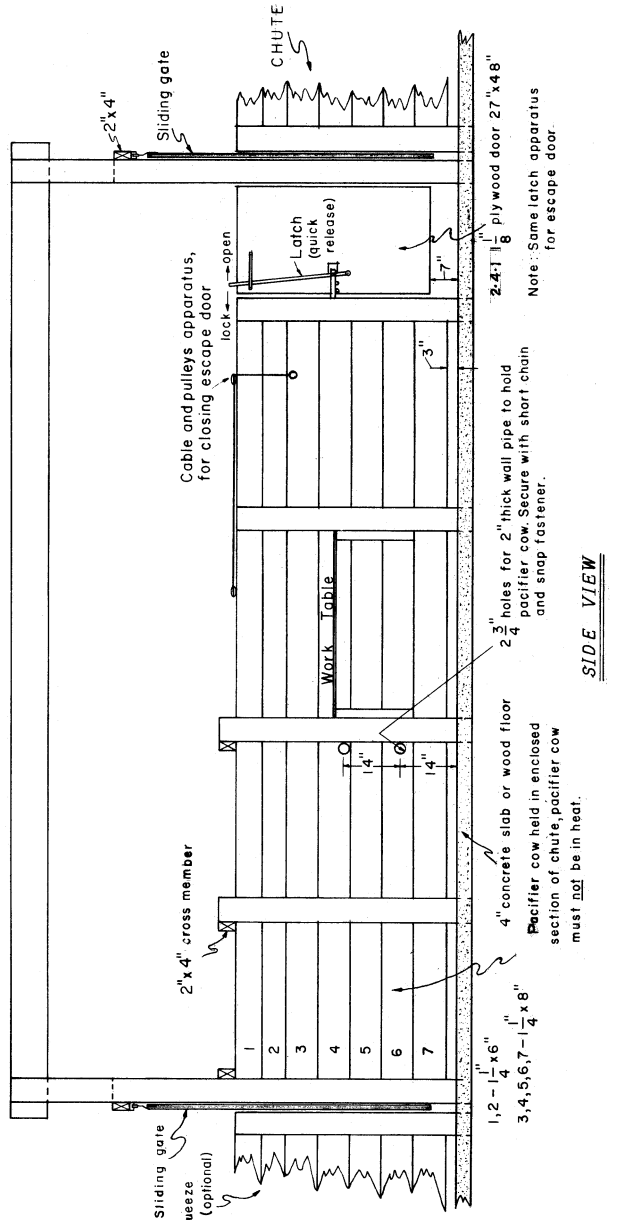
DESIGNED BY
GENE RAMBO
 BREEDING CHUTE
 FOR BEEF CATTLE

CALIF. '70 6103 SHEET 1 OF 2

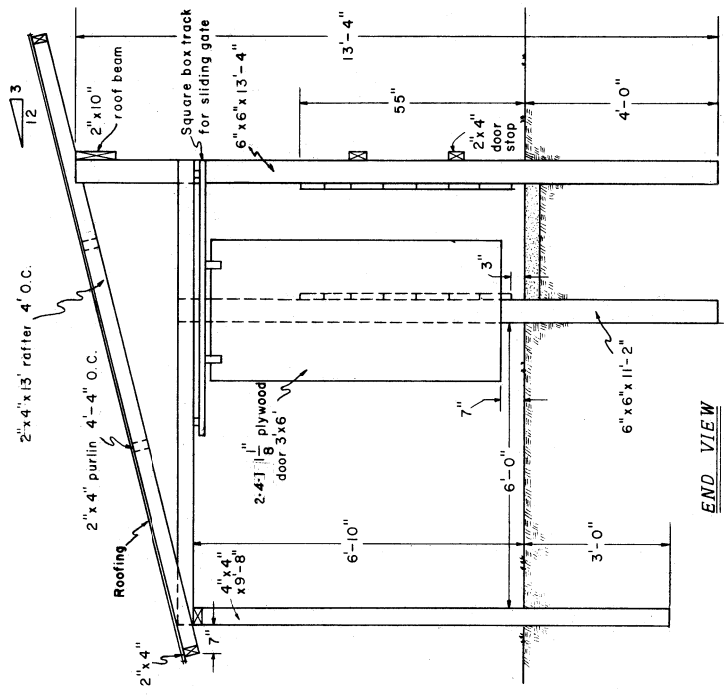
Designed by: Gene Rambo
 University of Calif. Plan C
 Davis, Calif.



TOP VIEW



SIDE VIEW



END VIEW

Note:
 Corrugated translucent plastic panel roofing installed in accordance with manufacturer's directions.
 All poles and wood in contact with the ground to be pressure treated with a preservative.

1, 2 - 1 1/4" x 6" x 8"
 3, 4, 5, 6, 7 - 1 1/4" x 8"
 4" concrete slab or wood floor
 Pacifier cow held in enclosed section of chute, pacifier cow must not be in heat.
 2 3/4" holes for 2" thick wall pipe to hold pacifier cow. Secure with short chain and snap fastener.
 Note: Same latch apparatus for escape door.