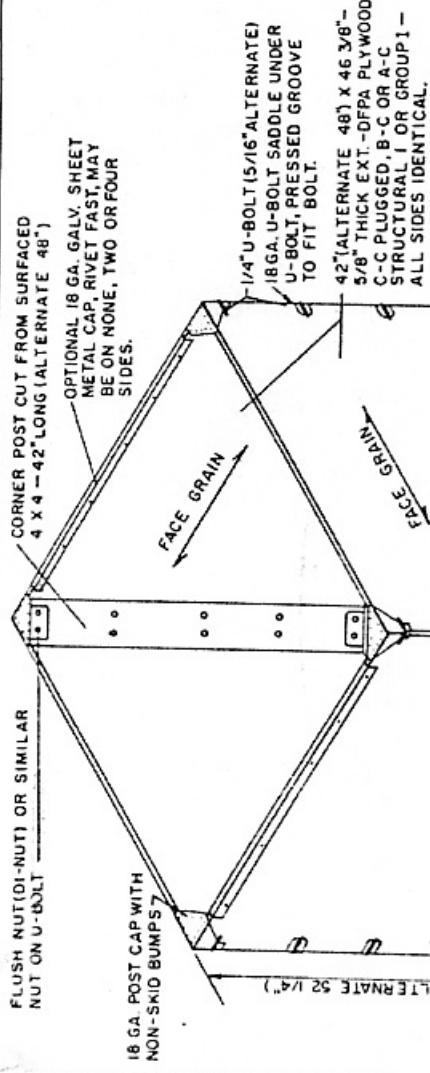


FLUSH NUT (DI-NUT) OR SIMILAR NUT ON U-BOLT

OPTIONAL 18 GA. GALV. SHEET METAL CAP, RIVET FAST, MAY BE ON NONE, TWO OR FOUR SIDES.



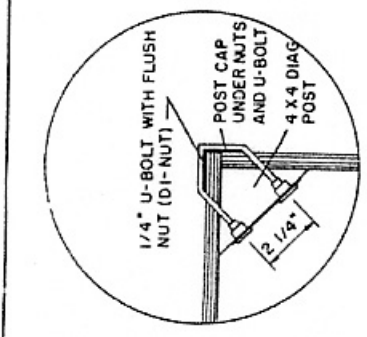
18 GA. POST CAP WITH NON-SKID BUMPS

1/4" U-BOLT (5/16" ALTERNATE) 18 GA. U-BOLT SADDLE UNDER U-BOLT, PRESSED GROOVE TO FIT BOLT.

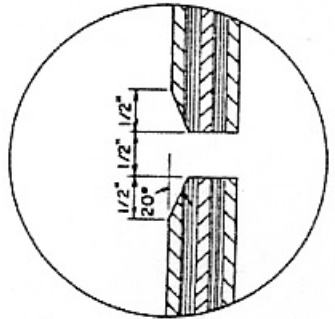
42" (ALTERNATE 48") X 46 3/8" - 5/8" THICK EXT -DFPA PLYWOOD C-C PLUGGED, B-C OR A-C STRUCTURAL 1 OR GROUP 1 - ALL SIDES IDENTICAL.

DECK IS HELD WITH BOLTS IN POST ANCHORS, ALLEN TABS PLUS ONE 3/8" BOLT IN MIDDLE OF CENTER STRINGER.

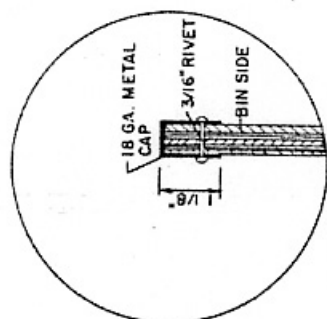
CORNER POST ANCHORAGE SIMILAR TO POST CAP, HELD WITH 3/8" CARRIAGE BOLT THRU SQUARE HOLE IN ANCHOR, DECK AND STRINGER. ROUT POST FOR BOLT HEAD AND RECESS FLUSH NUT INTO BOTTOM OF STRINGER.



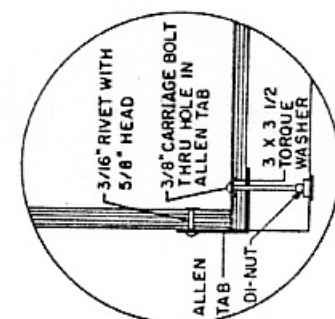
CORNER POST



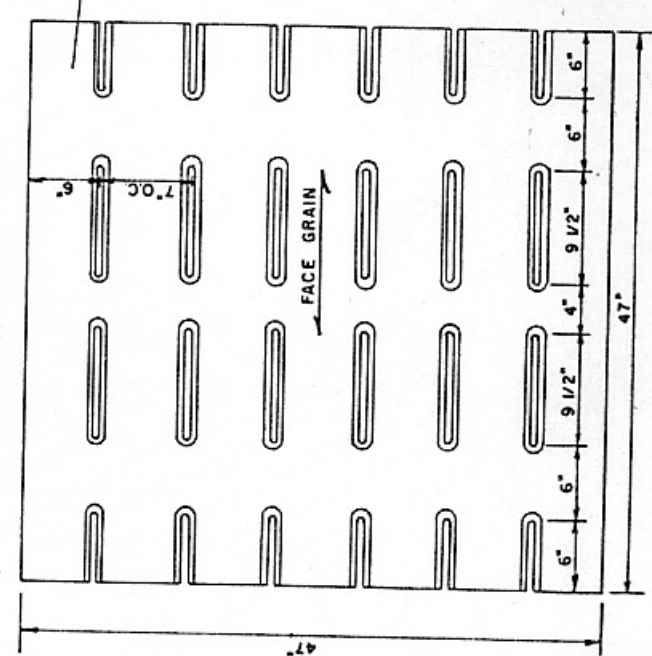
SECTION THRU SLOT



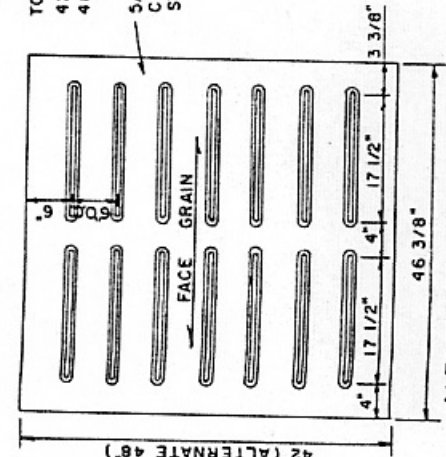
TOP EDGE CAP



STRINGER END



BOTTOM DETAIL\*



ALTERNATE SIDE DETAIL SLOTTED PLYWOOD

TOTAL OPEN AREA OF SLOTS  
42" DEEP - 105 SQ. IN.  
48" DEEP - 122 SQ. IN.

5/8" EXT -DFPA PLYWOOD C-C PLUGGED, B-C OR A-C, STRUCTURAL 1 OR GROUP 1.

47" X 47" - 5/8" THICK EXT -DFPA PLYWOOD, C-C PLUGGED, B-C, OR A-C STRUCTURAL 1, GROUP 1 OR GROUP 2.

TOTAL OPEN AREA OF SLOTS - 100 SQ. IN.

\* SOME BOTTOMS MANUFACTURED WITH 7 ROWS OF SLOTS. SLOTS 5/8" WIDE, PRO-WIDE TOTAL OPEN AREA OF 145 SQ. IN. CENTER TO CENTER DISTANCE OF SLOTS AND CENTER TO EDGE SPACING IS THEN 5 7/8".

DESIGNED TO CONFORM TO AMERICAN SOCIETY OF AGRICULTURAL ENGINEERS' RECOMMENDED INDUSTRY-WIDE STANDARDS FOR AUTOMATED HANDLING EQUIPMENT ASAE S 337.

AMERICAN PLYWOOD ASSOC.  
FORM NO. 67-150

COOPERATIVE EXTENSION WORK IN AGRICULTURE AND HOME ECONOMICS  
STATE OF TENNESSEE  
UNIVERSITY OF TENNESSEE  
AGRICULTURAL ENGINEERING DEPARTMENT  
UNITED STATES DEPARTMENT OF AGRICULTURE COOPERATING

PALLET BIN FOR VEGETABLES  
APA '71 6121 SHEET 1 OF 1