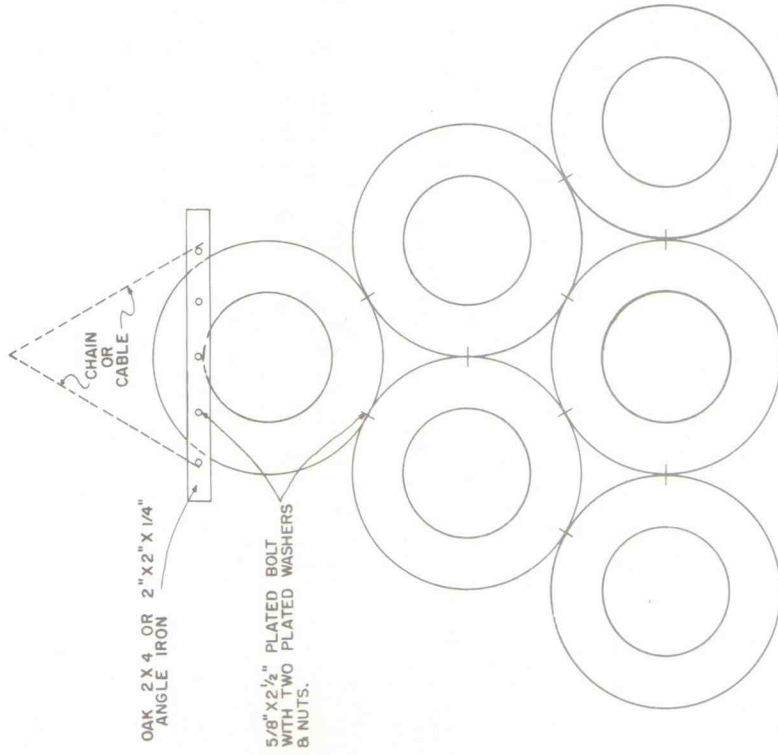


PLAN NO. 1

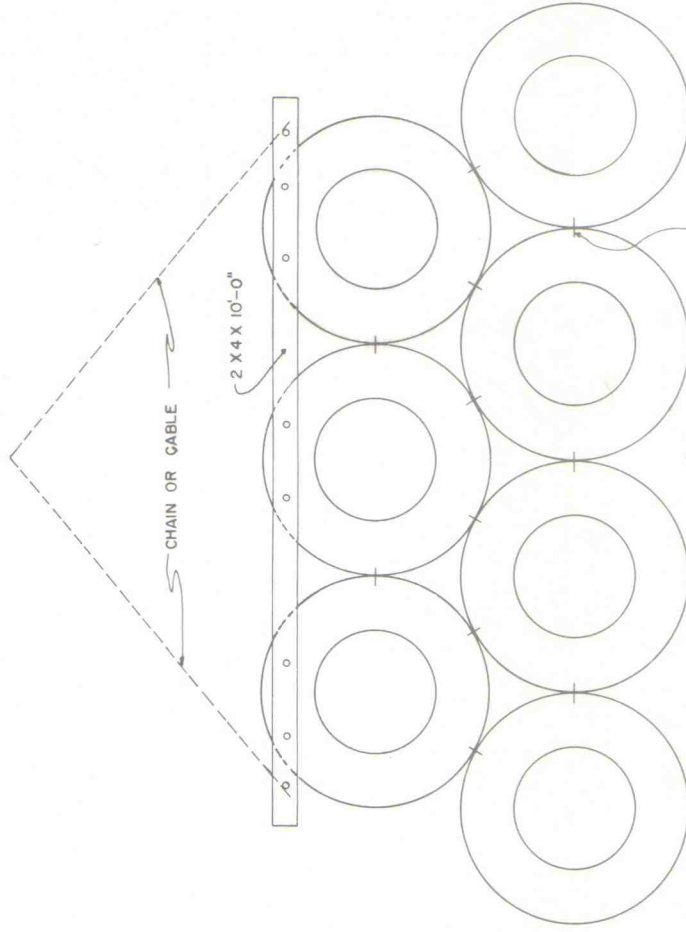


OAK 2 X 4 OR 2" X 2" X 1/4" ANGLE IRON

5/8" X 2 1/2" PLATED BOLT WITH TWO PLATED WASHERS & NUTS.

CHAIN OR CABLE

PLAN NO. 2



2 X 4 X 10'-0"

CHAIN OR CABLE

5/8" X 2 1/2" PLATED BOLT WITH TWO PLATED WASHERS & NUTS (TYPICAL).

- MATERIALS:**  
 7 - TIRES - PREFERABLY TRUCK TYPE (1900-20 OR 825-20).  
 1 - TREATED 2 X 4.  
 19 - 5/8" X 2 1/2" X 3" PLATED BOLTS.  
 38 - LARGE PLATED WASHERS.

BASED ON: AUBURN UNIV. PLAN NO. G-408



- MATERIALS:**  
 6 - TIRES - PREFERABLY TRUCK TYPE (610.00).  
 1 - OAK 2 X 4 OR 2" X 2" X 1/4" ANGLE IRON.  
 14 - 5/8" X 2 1/2" X 3" PLATED BOLTS.  
 28 - LARGE PLATED WASHERS.

COOPERATIVE EXTENSION WORK IN AGRICULTURE AND HOME ECONOMICS  
 STATE OF TENNESSEE  
 UNIVERSITY OF TENNESSEE  
 AGRICULTURAL ENGINEERING DEPARTMENT AND  
 UNITED STATES DEPARTMENT OF AGRICULTURE COOPERATING

PASTURE DRAG

ALA. '75 6212 SHEET 1 OF 1