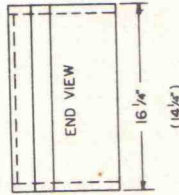
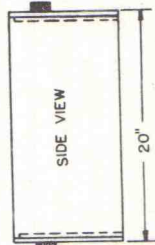
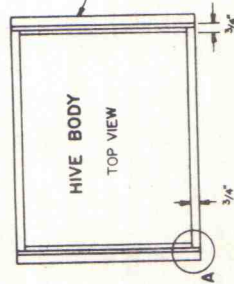


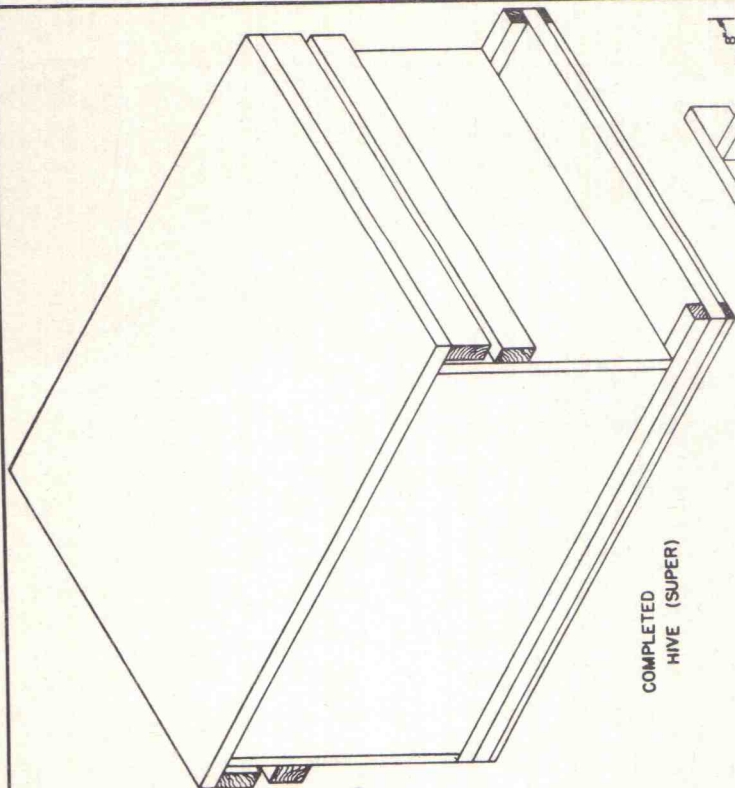
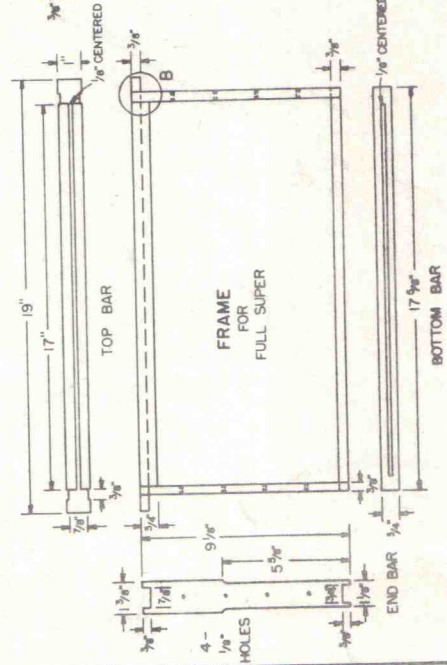
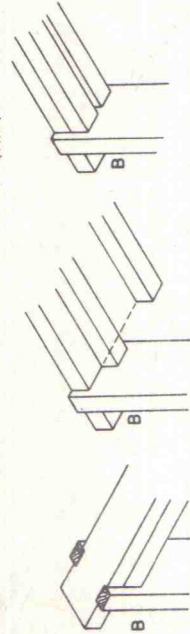
| | | | |
|---------------------------|-------------------------|---------------------------|--------------------------|
| COVER 16 1/4" X 22" | BOTTOM 16 1/4" X 22" | BOTTOM 16 1/4" X 22" | COVER 16 1/4" X 22" |
| HANDLES 1/2" X 16 1/4" | | HANDLES 1/2" X 16 1/4" | |
| SIDE 9 3/8" X 19 1/4" | END 9 3/8" X 16 1/4" | SIDE 9 3/8" X 19 1/4" | SIDE 9 3/8" X 19 1/4" |
| SIDE 9 3/8" X 19 1/4" | END 9 3/8" X 16 1/4" | SIDE 9 3/8" X 19 1/4" | END 9 3/8" X 19 1/4" |

CUTTING PLAN FOR PLYWOOD PARTS SHOWING ACTUAL DIMENSIONS ALLOW FOR SAW KERFS ON SAWN EDGES. (ONE HIVE BODY FROM 4' X 4' PLYWOOD, FULL SUPER.)

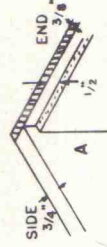


DEPTHS FOR HIVES

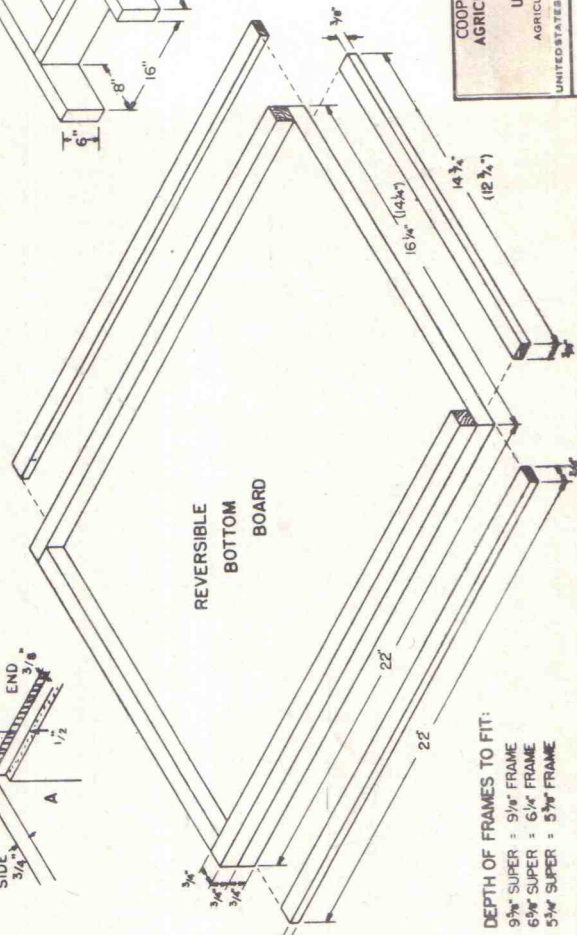
FULL SUPER = 9 3/8"
THREE-QUARTER SUPER = 6 3/8"
SHALLOW SUPER = 5 3/4"



COMPLETED HIVE (SUPER)



HIVE STAND



REVERSIBLE BOTTOM BOARD

NO SCALE

COOPERATIVE EXTENSION WORK IN AGRICULTURE AND HOME ECONOMICS
STATE OF TENNESSEE
UNIVERSITY OF TENNESSEE
AGRICULTURAL ENGINEERING DEPARTMENT
UNITED STATES DEPARTMENT OF AGRICULTURE COOPERATING

BEEHIVE AND FRAME
OR. '75 6231 SHEET 1 OF 1